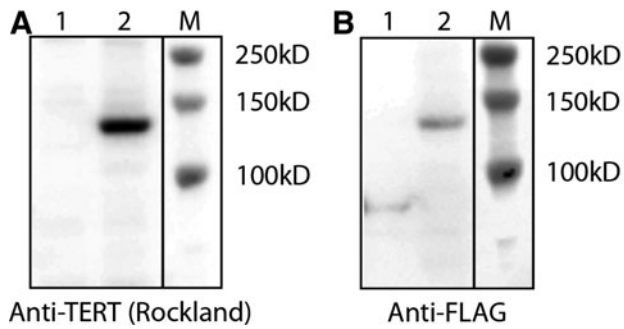


Supplementary Data



SUPPLEMENTARY FIG. S1. The Rockland antibody is specific for telomerase reverse transcriptase (TERT). **(A)** Western blot of whole-cell lysate of TET-inducible 293T-hTERT-isoform-3XFLAG blotted with anti-telomerase catalytic subunit Antibody –600-401-252S (Rockland Immunochemicals). *Lane 1:* Full-length + α + β hTERT isoform –DOX, *Lane 2:* + α + β hTERT isoform +DOX. The Rockland anti-TERT antibody is specific for detecting TERT protein. **(B)** Western blot membrane from **(A)** stripped and reprobed with M2 Anti-FLAG antibody. Rockland anti-TERT and M2 anti-FLAG are from rabbit and mouse species, respectively, to prevent cross-reactivity.