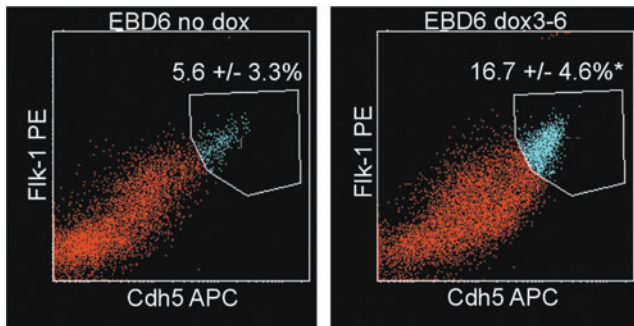


Supplementary Data



SUPPLEMENTARY FIG. S1. Embryonic bodies (EBs) were prepared using ETV2 over-expressing mES cells and cultured for 6 days. Dox was added for 72 h (days 3–6). FACS analysis of FLK1⁺/CDH5⁺ double-positive EPCs derived from EBs at day 6 showed a significant increase in ETV2 over-expressing EBs (* $P < 0.05$, $n = 7$).