

## Supporting information

**Table S1** Inter-correlation coefficients between biological triplicates

	293_1F_2mm	293_6F_2mm	294_1F_2mm
293_1F_2mm	<b>1.00</b>	<b>0.96</b>	<b>0.91</b>
293_6F_2mm	<b>0.96</b>	<b>1.00</b>	<b>0.94</b>
294_1F_2mm	<b>0.91</b>	<b>0.94</b>	<b>1.00</b>
	293_7S_2mm	294_9S_2mm	294_6S_2mm
293_7S_2mm	<b>1.00</b>	<b>0.92</b>	<b>0.94</b>
294_9S_2mm	<b>0.92</b>	<b>1.00</b>	<b>0.98</b>
294_6S_2mm	<b>0.94</b>	<b>0.98</b>	<b>1.00</b>
	293_1F_1.5mm	293_6F_1.5mm	ms8F_1.5mm
293_1F_1.5mm	1.00	0.86	0.78
293_6F_1.5mm	0.86	1.00	0.79
ms8F_1.5mm	0.78	0.79	1.00
	293_7S_1.5mm	294_9S_1.5mm	294_6S_1.5mm
293_7S_1.5mm	1.00	0.84	0.93
294_9S_1.5mm	0.84	1.00	0.89
294_6S_1.5mm	0.93	0.89	1.00

F: fertile; S: sterile.

**Table S2** Intra-correlation coefficients among technical triplicates

Sample	F 2 mm			S 2 mm			F 1.5 mm			S 1.5 mm		
	293_1	293_6	294_1	293_7	294_9	294_6	293_1	293_6	ms8F	293_7	294_9	294_6
Correlation												
run 1 to 2	0.82	0.88	0.85	0.87	0.95	0.94	0.88	0.88	0.94	0.86	0.89	0.91
Correlation												
run 2 to 3	0.90	0.90	0.85	0.90	0.96	0.93	0.93	0.88	0.91	0.87	0.85	0.91
Correlation												
run 1 to 3	0.82	0.89	0.91	0.89	0.93	0.96	0.89	0.85	0.93	0.86	0.86	0.91
Average	0.84	0.89	0.87	0.89	0.95	0.94	0.90	0.87	0.93	0.86	0.87	0.91
SD(±)	0.05	0.01	0.03	0.02	0.01	0.01	0.03	0.02	0.02	0.01	0.02	0.00

F: fertile; S: sterile.

**Table S3** Criteria for data filtration\*

Peptide FDR	Protein FDR	Number of assigned peptides	Minimum number of times spectra counted	Number of unique proteins	Number of spectra
0.4%	7.6%	1+	1+	2761	70309
0.4%	7.6%	1+	2+	672	70309
0.3%	0.2%	2+	2+	359	57543

\* Additionally, minimum peptide identity probability of 95% and minimum protein identity probability of 90%.

**Table S4** Analysis of potential trans-membrane proteins

Protein access number	Functional annotation in <i>Zea mays</i>	Protein molecular weight (Da)	Presence in fertile stages (mm)
GRMZM2G032564	60 S ribosome protein	26208.7	1.5 and 2.0
GRMZM2G065355	heat shock factor-binding protein 1 isoform	33596.6	1.5
GRMZM2G104025	heat shock factor-binding protein 1 isoform	37596.6	2.0

**Figure S1**

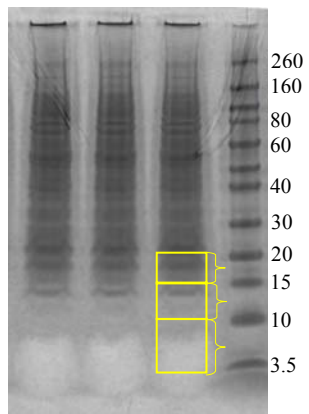
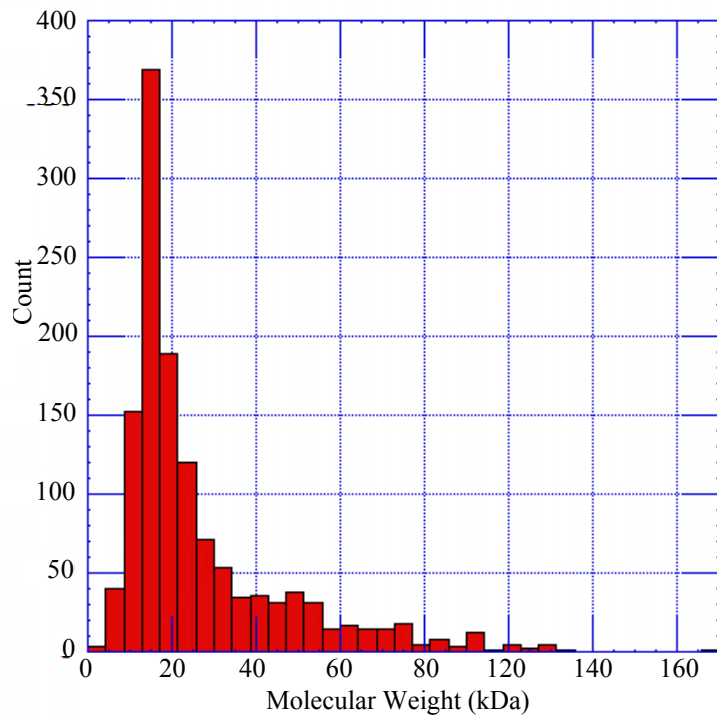
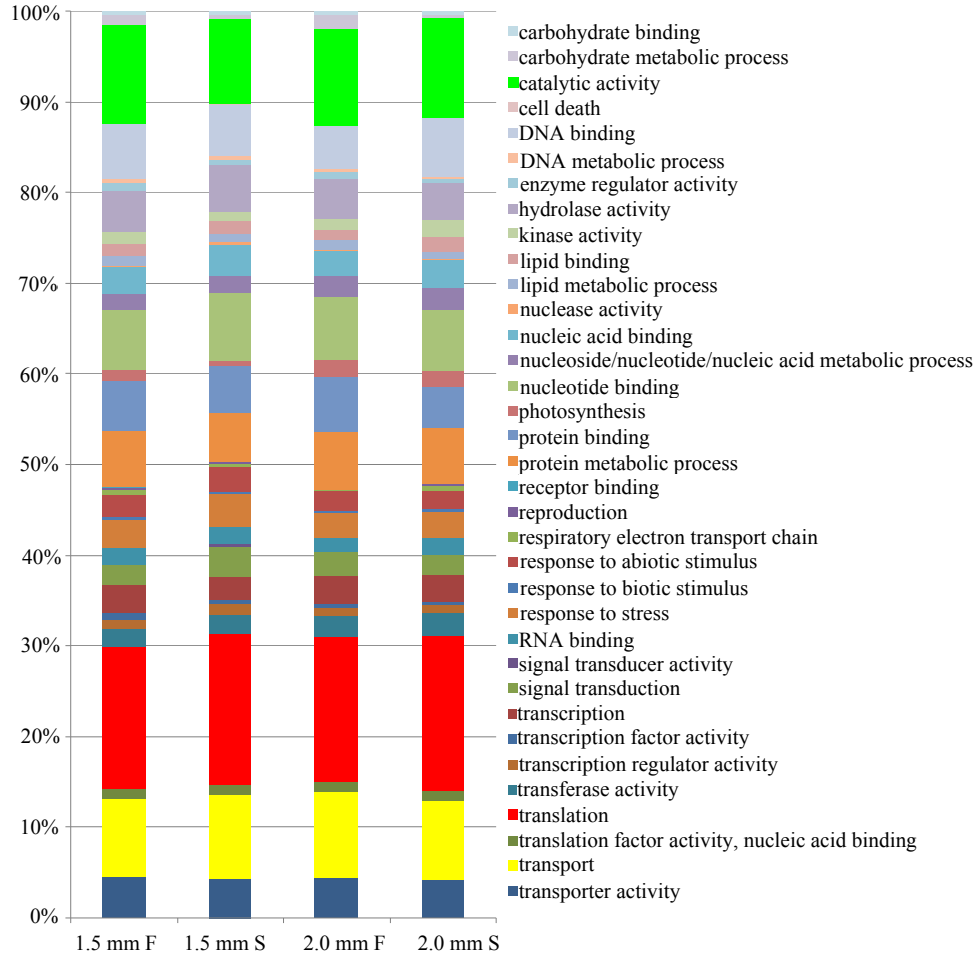


Figure S2



**Figure S3**



**Figure S4**

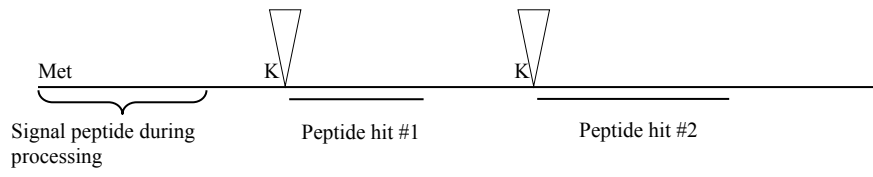




Figure S5

