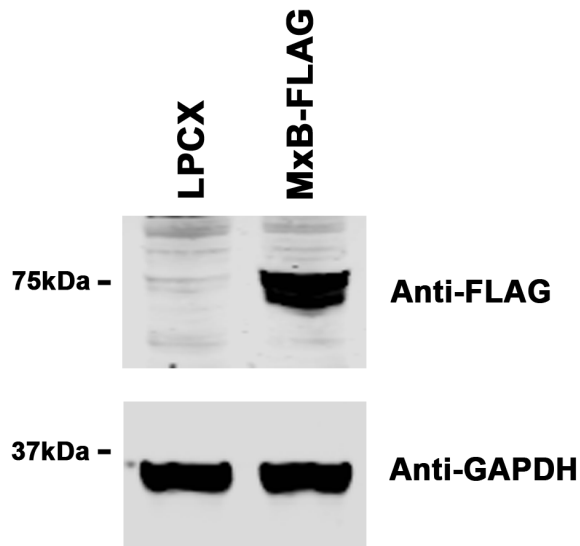
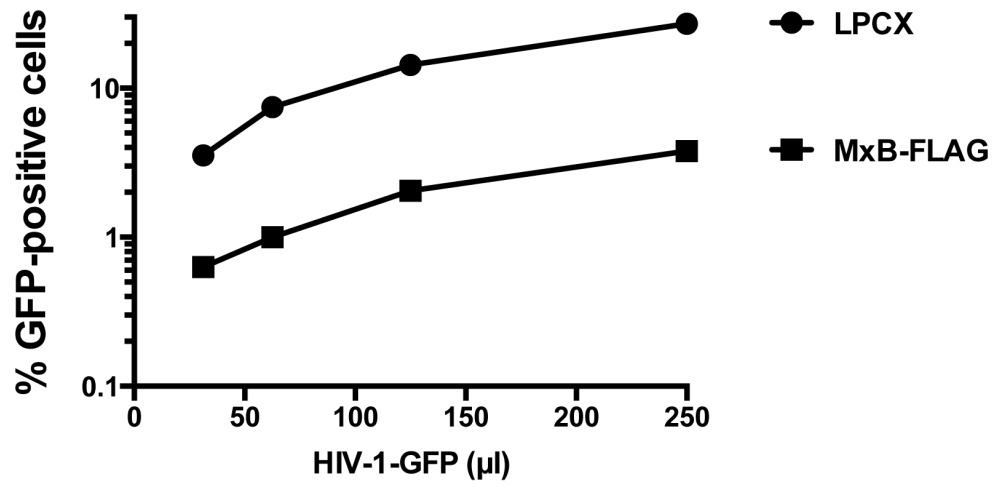


Additional file 1. Restriction of HIV-1 and other viruses by MxB.

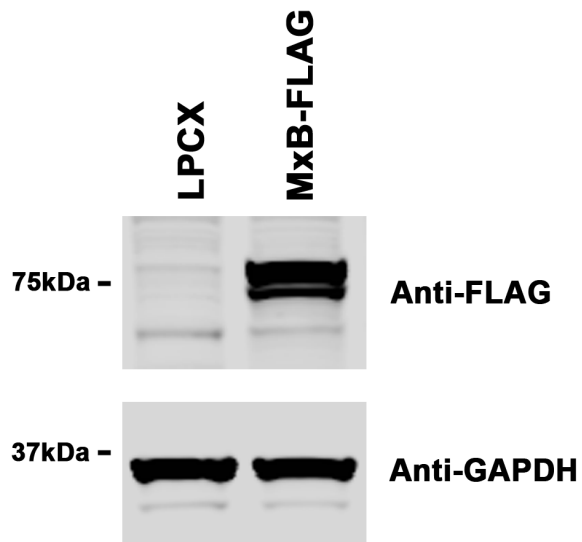
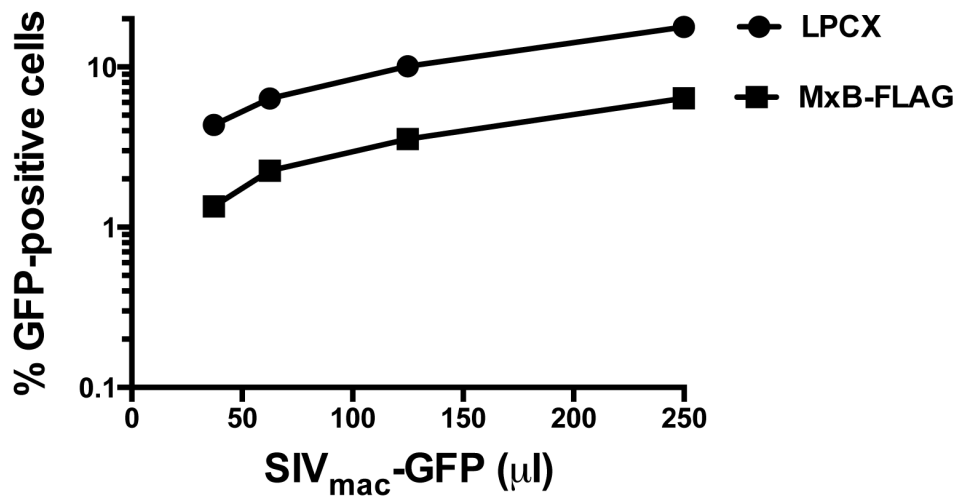
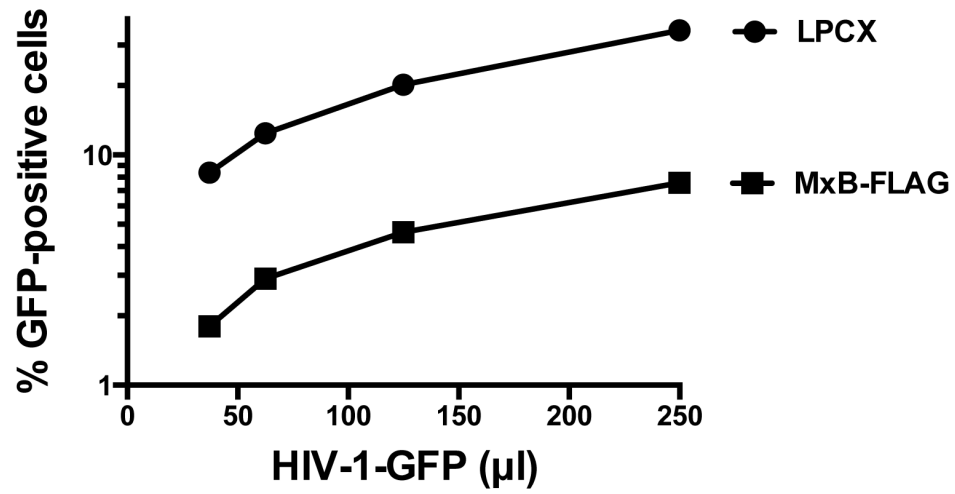
(A) HeLa cells stably expressing MxB (bottom panel) were challenged using increasing amounts of HIV-1-GFP. Forty-eight hours post-infection the percentage of GFP-positive cells was determined by flow cytometry. As a control, HeLa cells stably transduced with the empty vector LPCX were challenged with HIV-1. Similar results were obtained in three independent experiments and a representative experiment is shown. **(B)** U937 cells stably expressing MxB (bottom panel) were challenged with HIV-1-GFP and SIV_{mac}-GFP. Forty-eight hours post-infection the percentage of GFP-positive cells was determined by flow cytometry. As a control, U937 cells stably transduced with the empty vector LPCX were challenged with HIV-1-GFP. Similar results were obtained in three independent experiments and a representative experiment is shown. **(C)** Cf2Th cells stably expressing MxB (bottom panel) were challenged with HIV-1-GFP, HIV-2-GFP, SIV_{mac}-GFP, BIV-GFP, FIV-GFP, EAIV-GFP, N-MLV-GFP and B-MLV-GFP. Forty-eight hours post-infection the percentage of GFP-positive cells was determined by flow cytometry. As a control, Cf2Th cells stably transduced with the empty vector LPCX were challenged with the indicated viruses. Similar results were obtained in three independent experiments and a representative experiment is shown. **(D)** The ability of MxB to bind in vitro assembled SIV_{mac} (left panel) or HIV-2 (right panel) CA-NC complexes was measured, as described in experimental procedures. Bound fractions were analyzed using anti-HA, anti-p27 and anti-HIV-2-p24 antibodies. Similar results were obtained in three independent experiments and a representative experiment is shown.

A



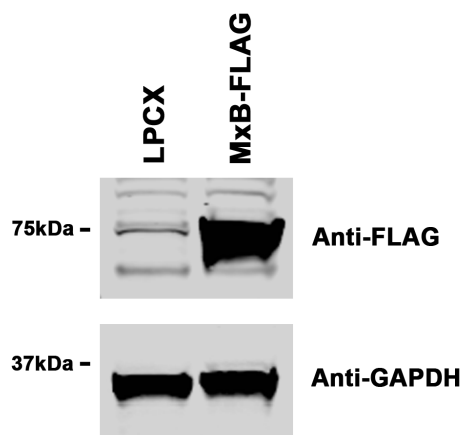
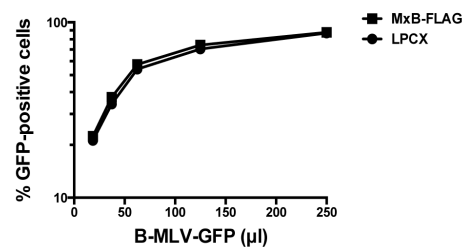
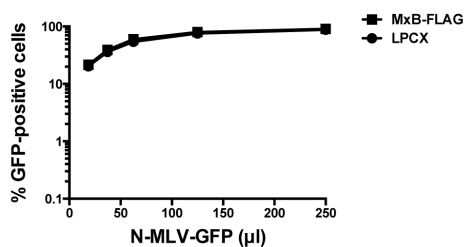
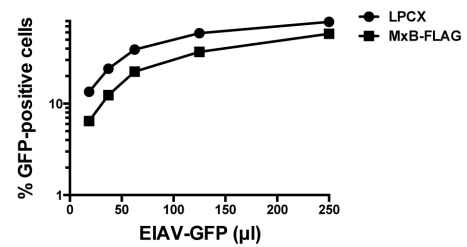
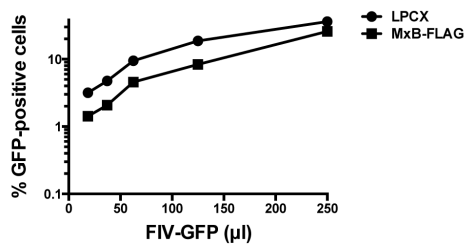
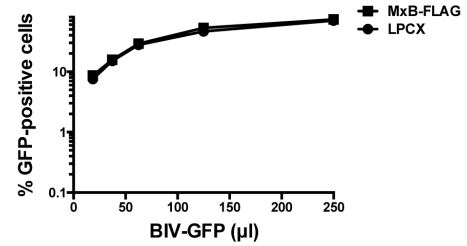
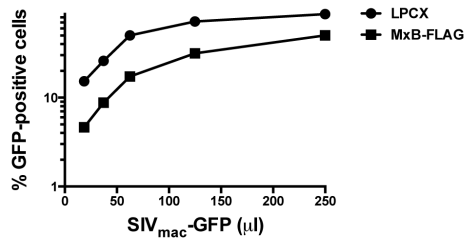
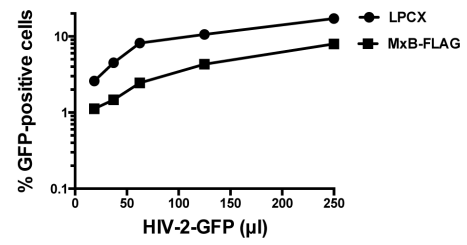
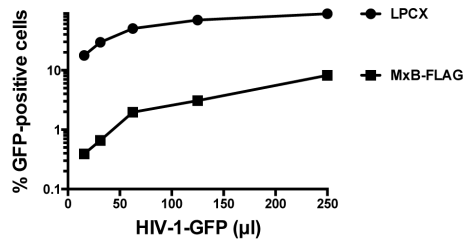
Additional file 1

B



Additional file 1

C



Additional file 1

D

