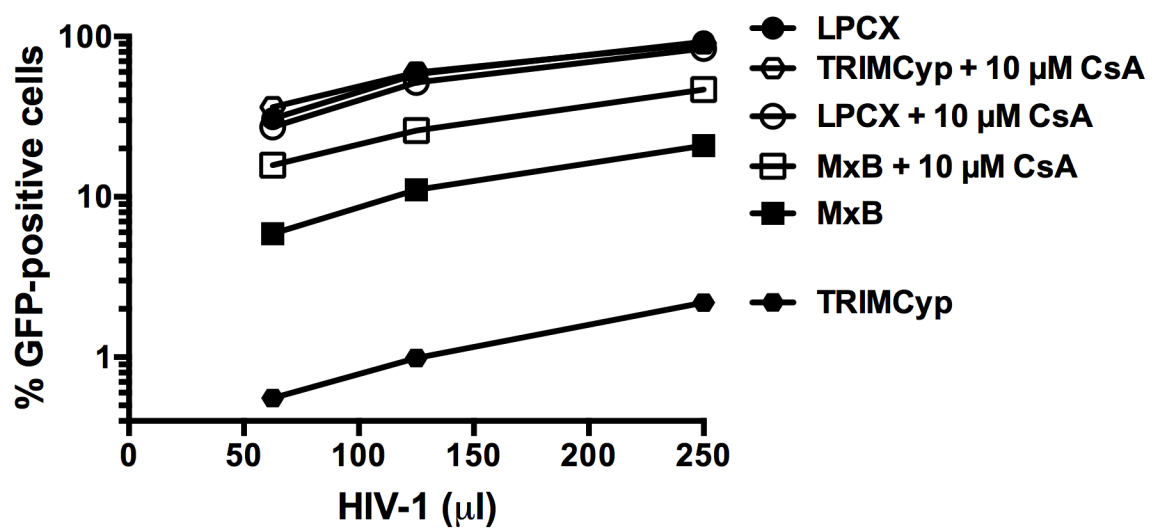
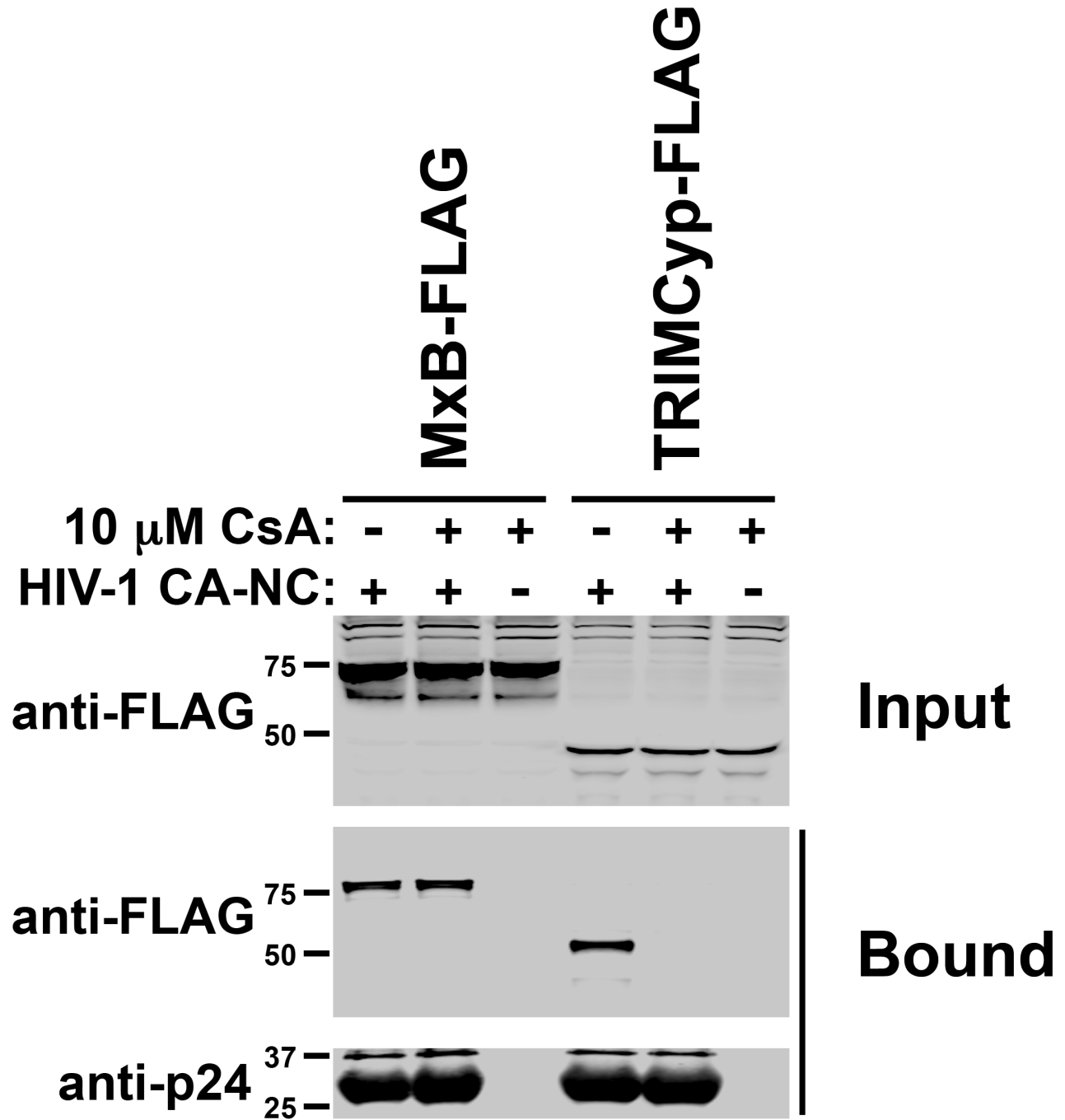
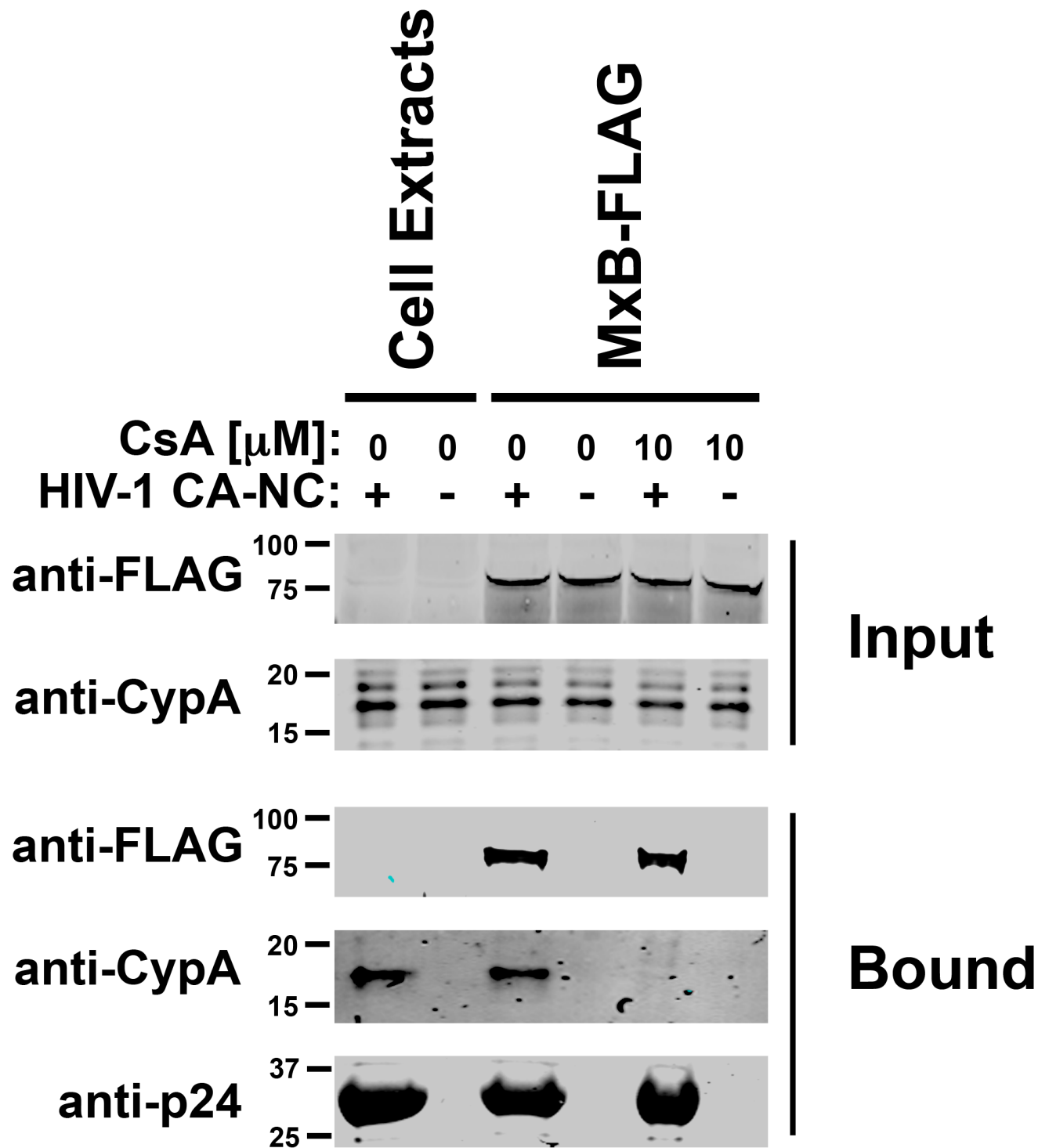


Additional file 3. Role of Cyclophilin A in MxB restriction.

(A) Cf2Th cells stably expressing MxB or TRIMCyp were challenged with increasing amounts of HIV-1-GFP in the presence of 10 μ M cyclosporine A (CsA). Forty-eight hours post-infection the percentage of GFP-positive cells was determined by flow cytometry. As a control, Cf2Th cells stably transduced with the empty vector LPCX were challenged with HIV-1-GFP. Similar results were obtained in three independent experiments and a representative experiment is shown. **(B)** The ability of MxB and TRIMCyp to bind in vitro assembled HIV-1 CA-NC complexes in the presence of 10 μ M CsA was measured, as described in Experimental Procedures. Similar results were obtained in three independent experiments and a representative experiment is shown. **(C)** The ability of MxB to recruit endogenously expressed cyclophilin A to in vitro assembled HIV-1 CA-NC complexes was measured by performing a capsid binding assay, as describe in experimental procedures. Input and Bound fractions were analyzed by Western blotting using antibodies against FLAG, cyclophilin A and p24. Similar results were obtained in three independent experiments and a representative experiment is shown.

A**Additional file 3**

**Additional file 3**

C

Additional file 3