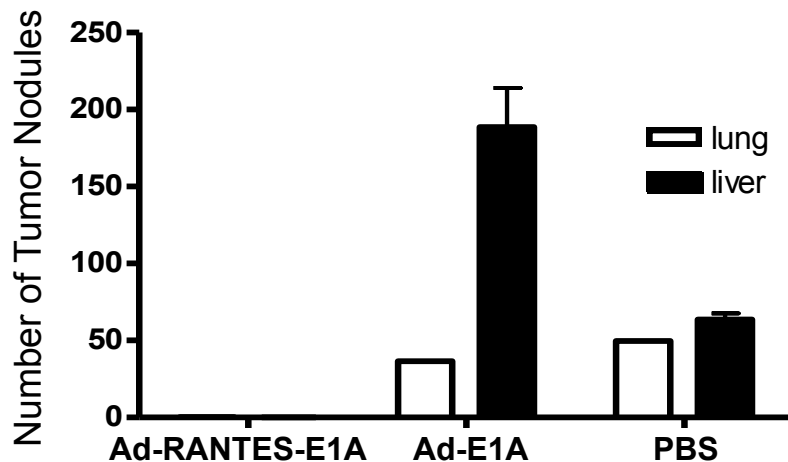
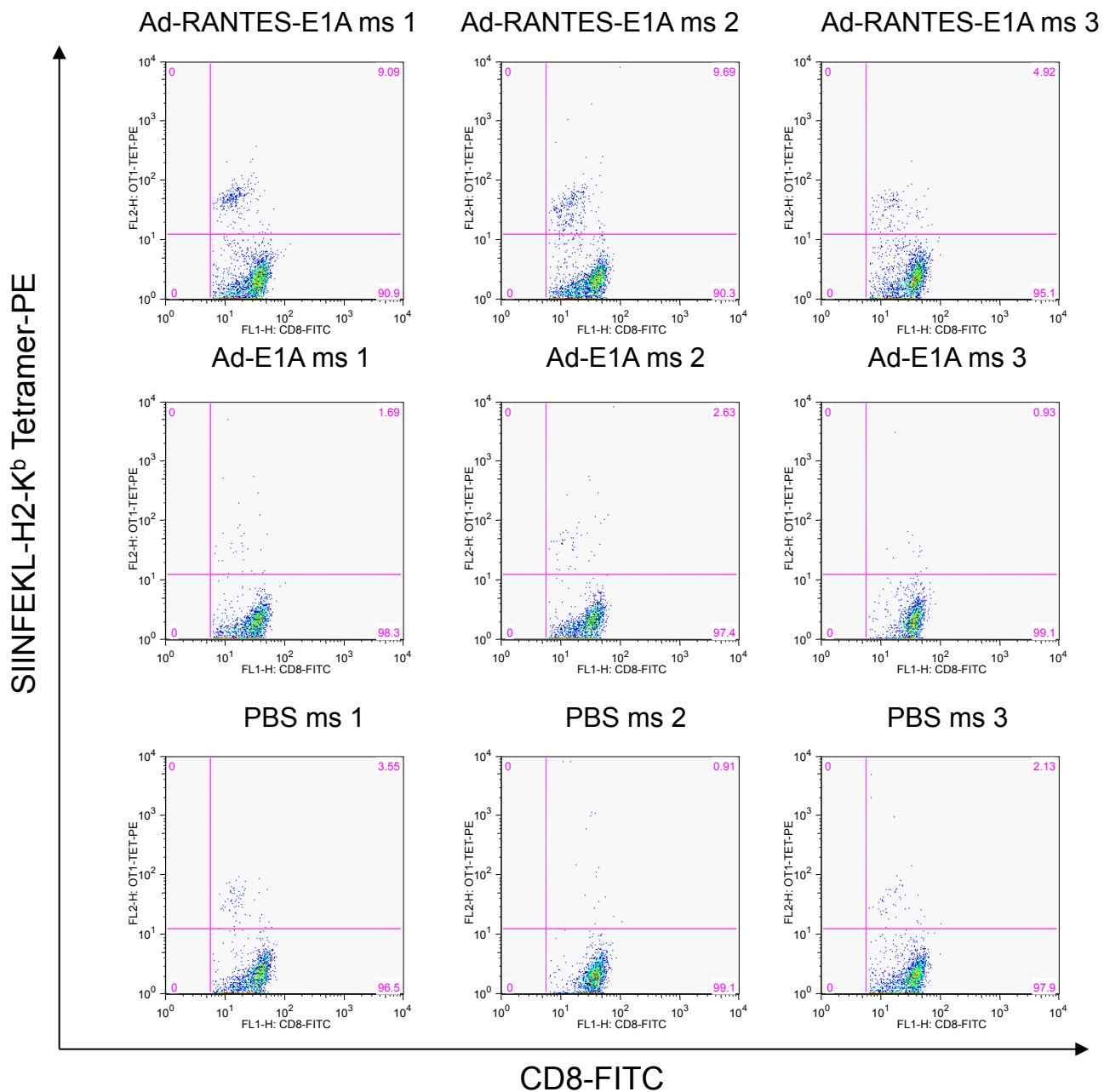


Supplementary Figure 1: Mean percentage of CD11c-CD11b⁺ macrophages in tumor cell suspensions of three mice (left panel). Maturation status of macrophages was determined by staining with anti-mouse CD80 mAb (right panel).



Supplementary Figure 2: Mean number of pulmonary and liver tumor nodules (\pm SEM) shown represents the results from two experiments of two performed (N=3).

Supplementary Fig 3, Lapteva et al



Supplementary Figure 3: Frequency of SIINFEKL TCR positive CD8+ T cells in the peripheral blood of mice. Ms: mouse