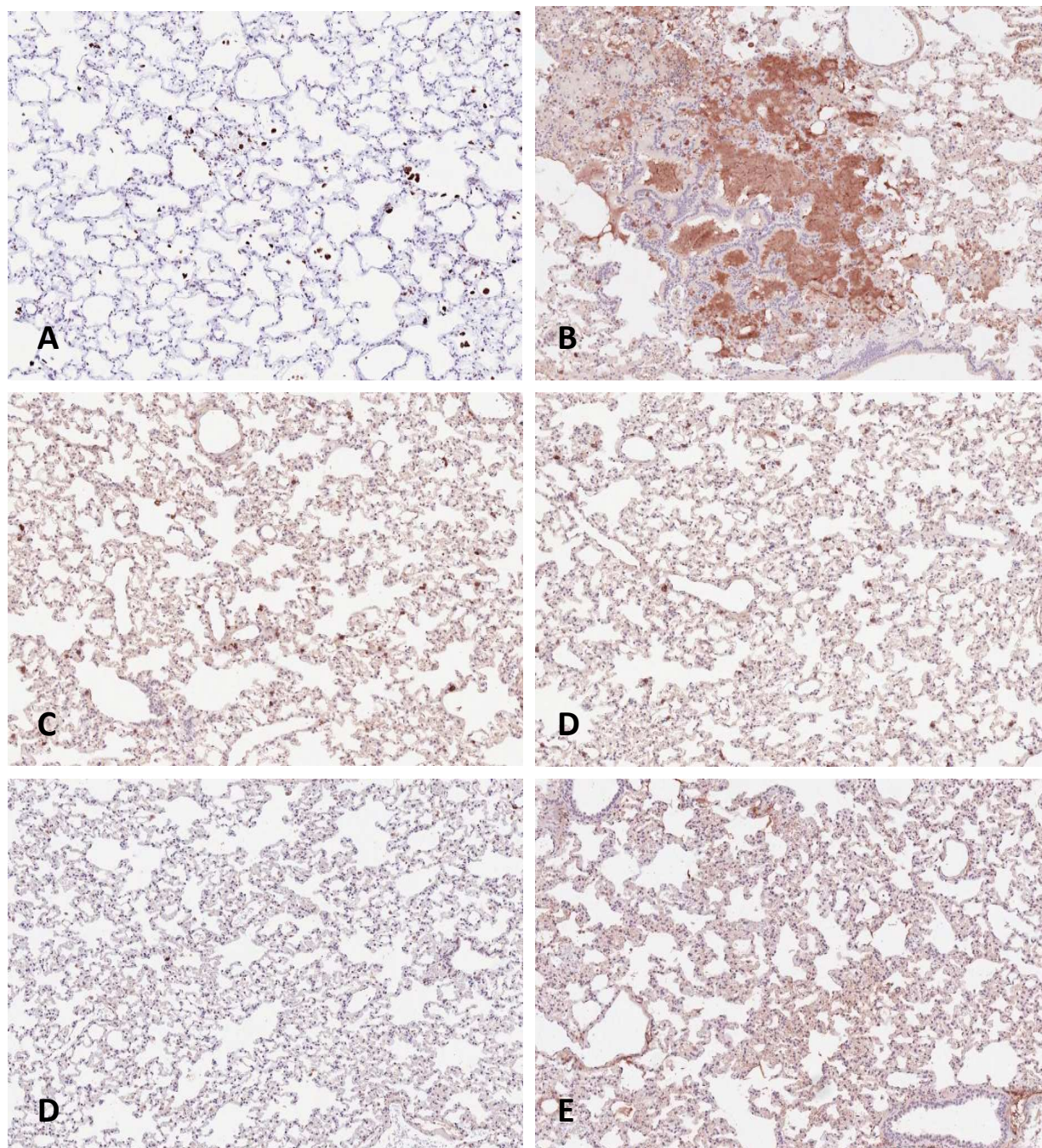
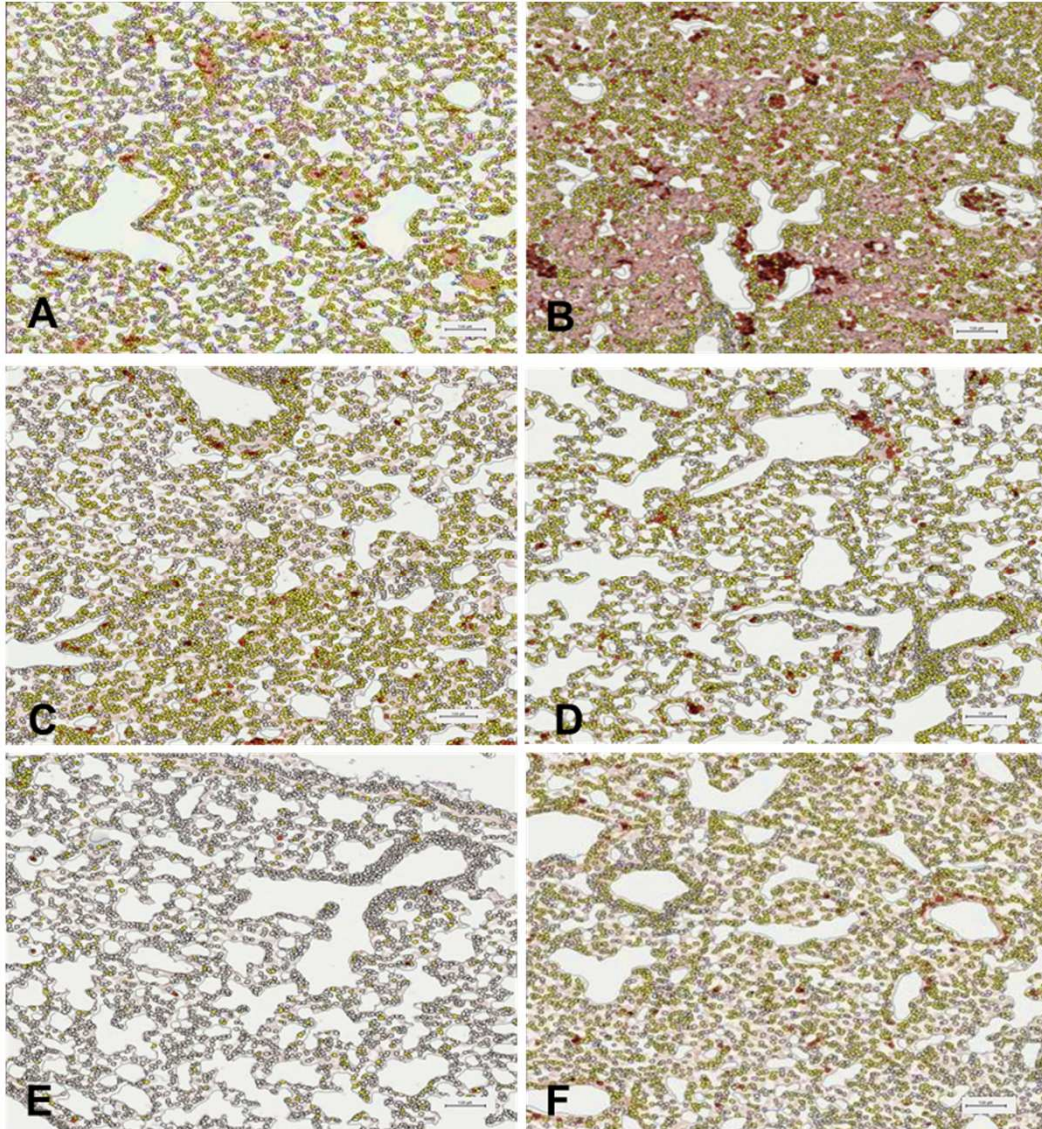


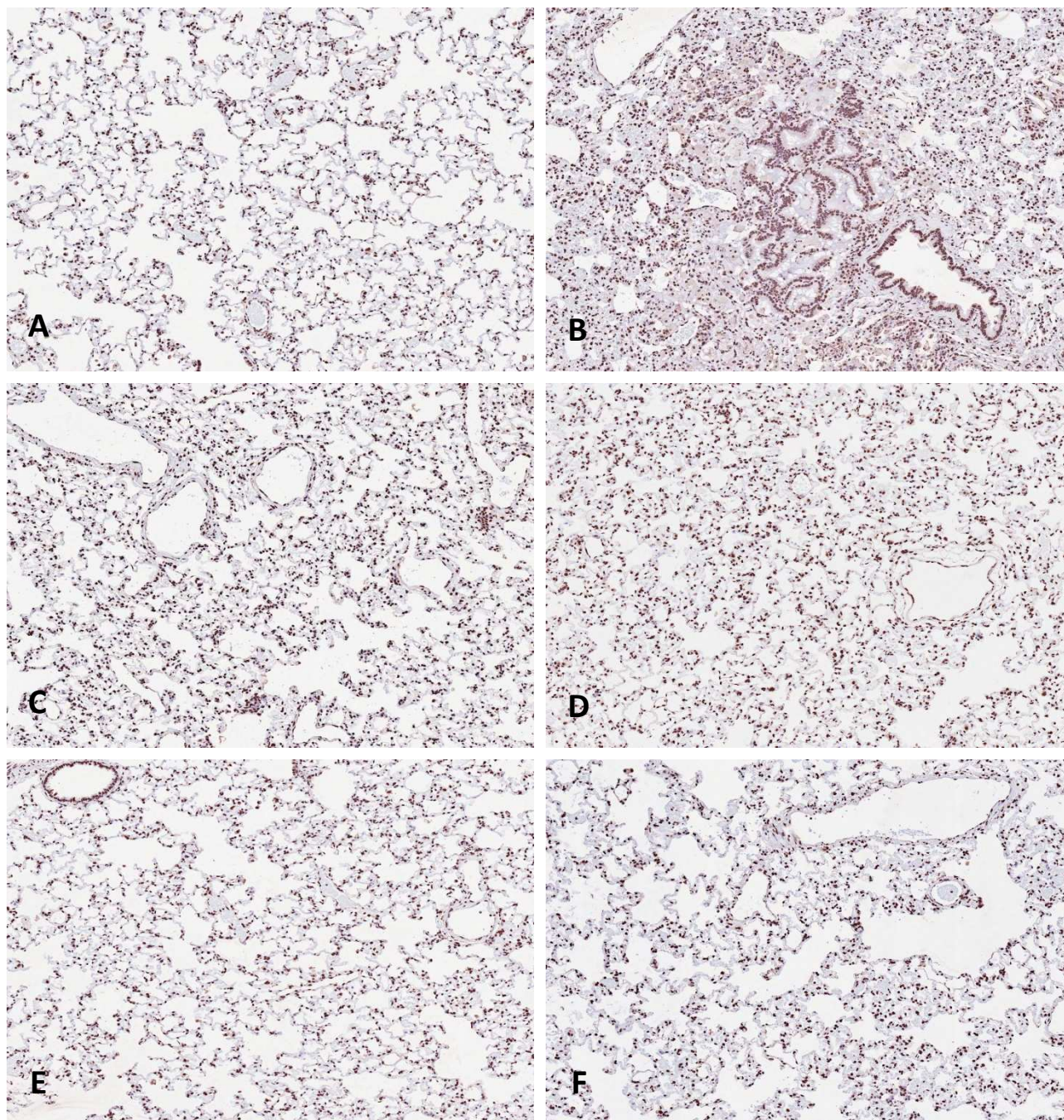
Supplementary Figure 1: Photomicrographs showing Masson Trichrome staining on lung sections from rats euthanized at 32 weeks after initiation of treatment for the various groups. The different panels are A) 32wk control; B) whole thorax irradiation (WTR); C) WTR + Euk-207 (WTR+Euk); D) WTR + Captopril (WTR+Capt) E) WTR+Euk-207+Capt F) Euk-207+Capt. Original magnification 10x.



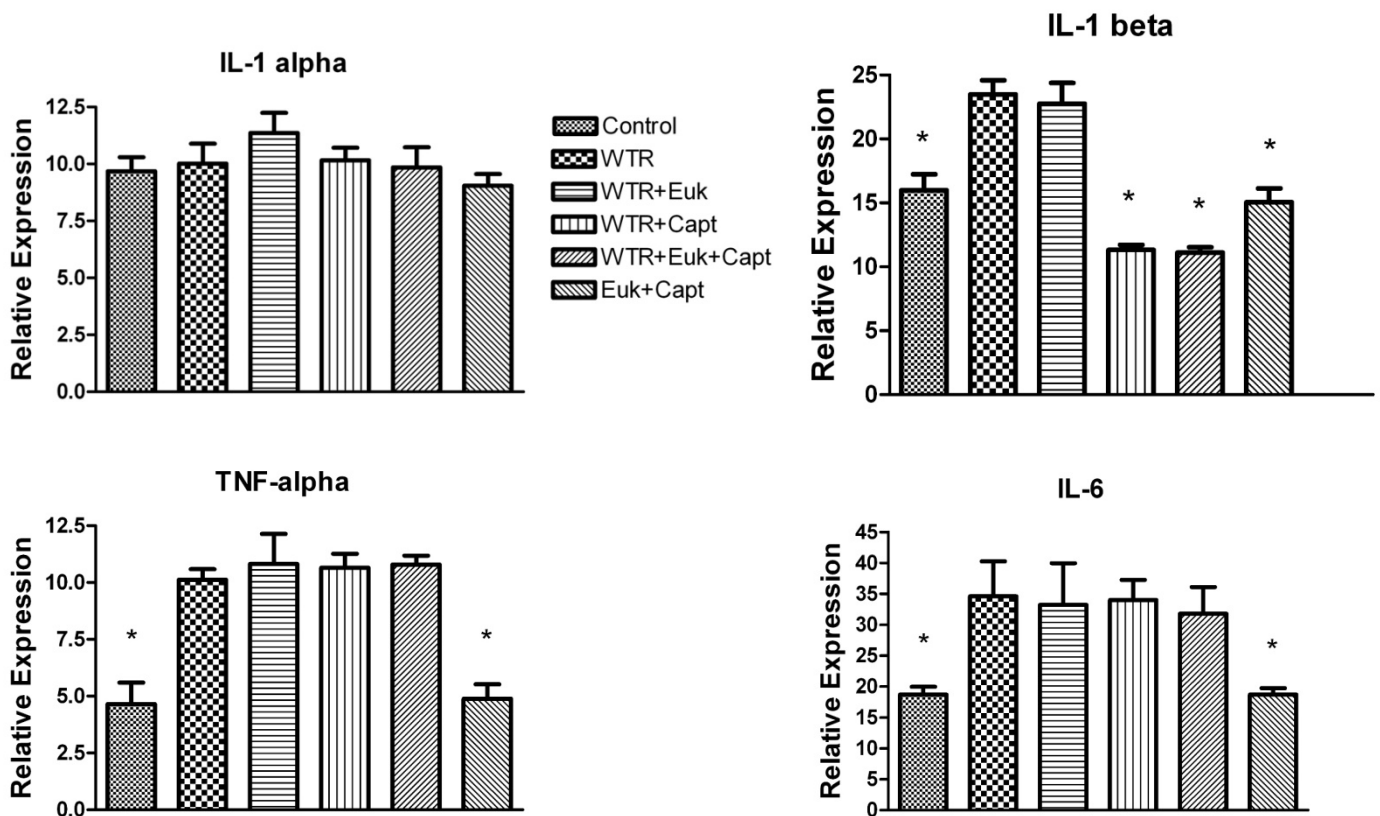
Supplementary Figure 2: Photomicrographs showing staining with TGF- β 1 on lung sections from rats euthanized at 32 weeks after initiation of treatment for the various groups. The different panels are A) 32wk control; B) whole thorax irradiation (WTR); C) WTR + Euk-207 (WTR+Euk); D) WTR + Captopril (WTR+Capt) E) WTR+Euk-207+Capt F) Euk-207+Capt. Original magnification 10x.



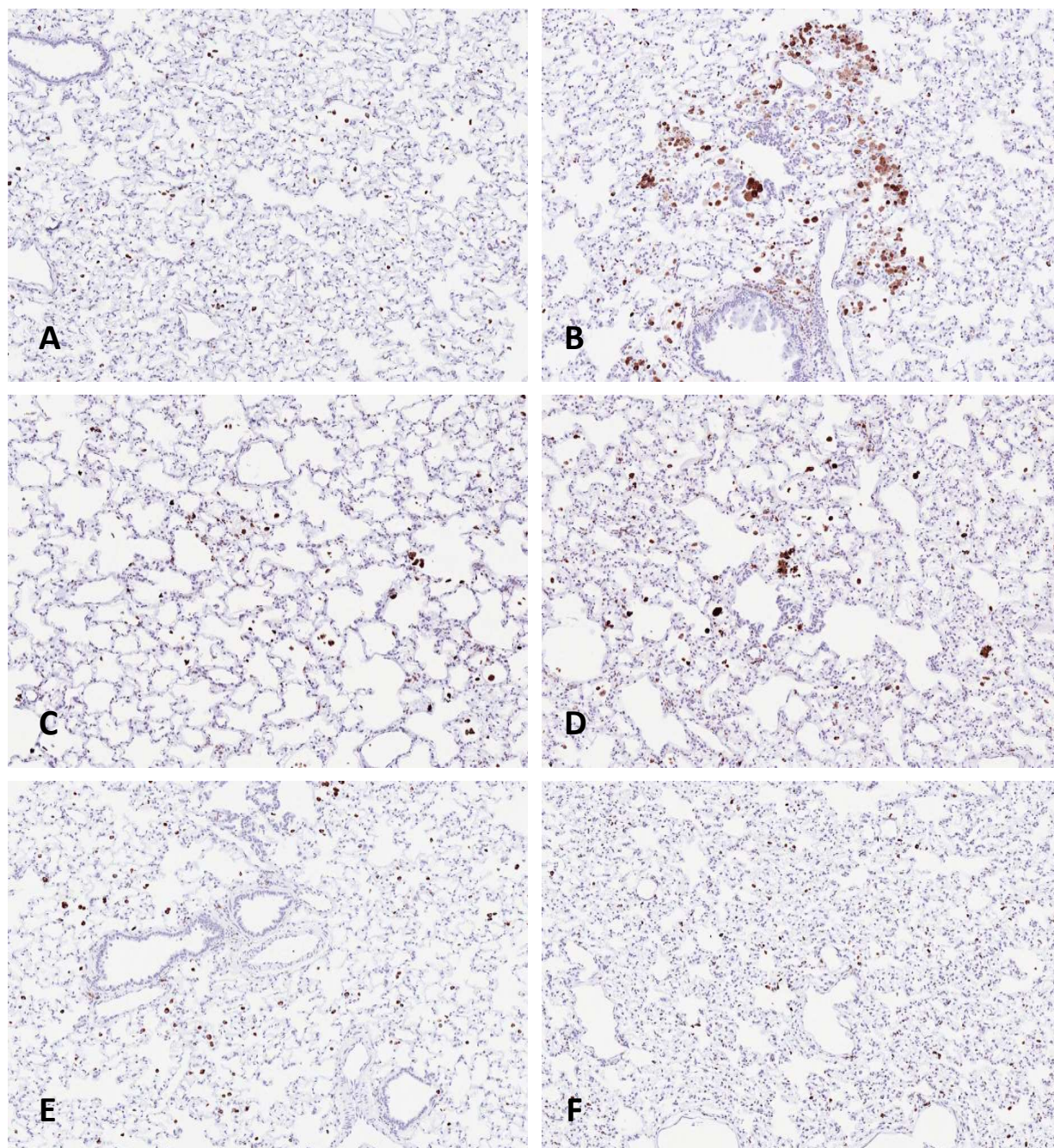
Supplementary Figure 3: Photomicrographs showing staining for TGF- β 1 with Definiens analysis. The different panels are A) 32wk control; B) whole thorax irradiation (WTR); C) WTR + Euk-207 (WTR+Euk); D) WTR + Captopril (WTR+Capt) E) WTR+Euk-207+Capt F) Euk-207+Capt. Original magnification 10x. Red dots representing TGF- β high stain, orange dots representing medium, yellow dots representing low and white dots representing negative staining. The scale bar represents 100 μ m.



Supplementary Figure 4: Photomicrographs showing staining with 8-OHdG on lung sections from rats euthanized at 32 weeks after initiation of treatment for the various groups. The different panels are A) 32wk control; B) whole thorax irradiation (WTR); C) WTR + Euk-207 (WTR+Euk); D) WTR + Captopril (WTR+Capt) E) WTR+Euk-207+Capt F) Euk-207+Capt. Original magnification 10x.



Supplementary Figure 5: Analysis of expression of inflammatory cytokines as percent positivity (the ratio of positive pixels/total number of positive and negative pixels in the tissue section with air spaces excluded) in the lungs of the rats at time of euthanasia at 36 weeks post-irradiation. A) Analysis of IL-1 α staining; B) Analysis of IL-1 β staining; C) Analysis of IL-6 staining; D) Analysis of TNF- α staining. Each bar represents the mean (\pm SEM) for all rats available for analysis. Control = No irradiation; WTR = whole thorax irradiation; WTR+Euk = whole thorax irradiation + Euk-207; WTR+Capt = whole thorax irradiation + Captopril; WTR+Euk+Capt = whole thorax irradiation + Euk-207 + Captopril; Euk+Capt = Euk-207 + Captopril. The asterisks indicate groups that are significantly different from the WTR group in each panel.



Supplementary Figure 6: Photomicrographs showing staining with ED-1 on lung sections from rats euthanized at 32 weeks after initiation of treatment for the various groups. The different panels are A) 32wk control; B) whole thorax irradiation (WTR); C) WTR + Euk-207 (WTR+Euk); D) WTR + Captopril (WTR+Capt) E) WTR+Euk-207+Capt F) Euk-207+Capt. Original magnification 10x.