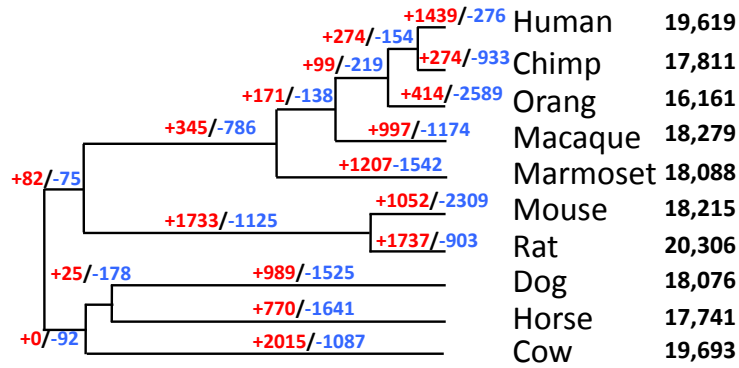
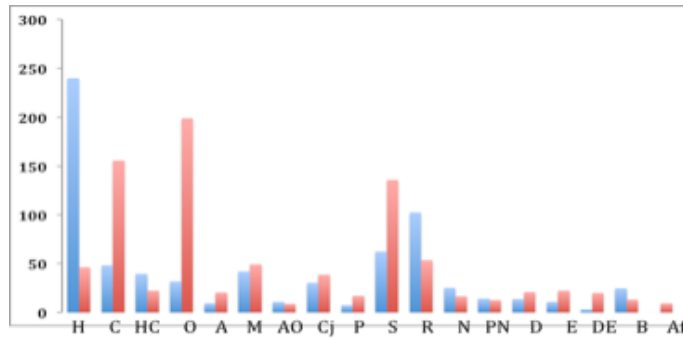


a



b



**Supplementary Figure 7 | Gene Family Expansion and Contractions.** a. Inferred gene gains (red) and losses (blue) in 8877 gene families shared by ten mammalian species are reported for each branch of the tree. b. Number of gains (red) and losses (blue) per million years for each branch of the tree; human (H), chimpanzee (C), human and chimp (HC), orangutan (O), apes (A), rhesus macaque (M), apes and old world monkeys (AO), marmoset (Cj), primates (P), mouse (S), rat (R), rodents (N), primates and rodents (PN), dog (D), horse (E), dog and horse (DE), cow (B), Afrotheria (Af).