

Figure S1. Distribution and relationship between Chloroflexi OTUs from oral and contiguous sites (AN, anterior nares; KG, keratinized gingiva; TH, throat; BM, bucal mucosa; PT, palatine tonsils; SBP, subgingival plaques; SPP, supragingival plaque).

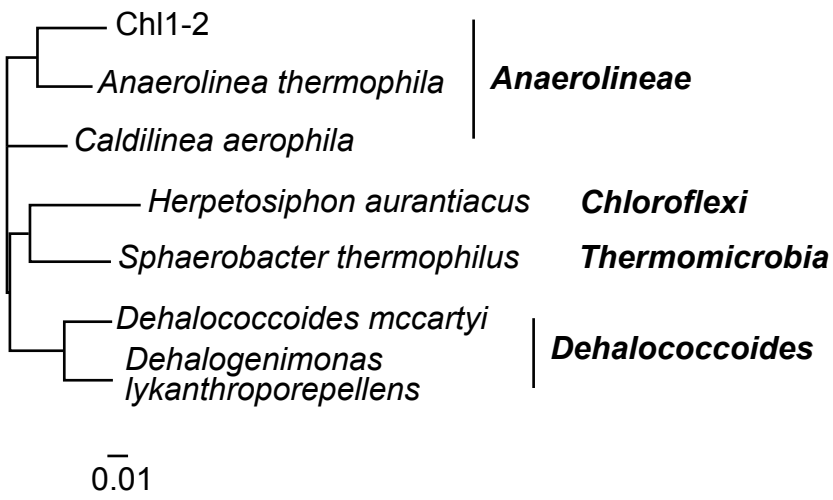


Figure S2. Hierarchical clustering of representative *Chloroflexi* genomes based on COG composition.