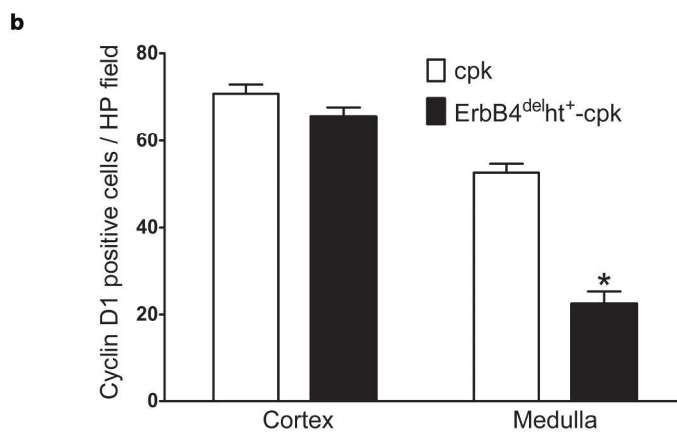
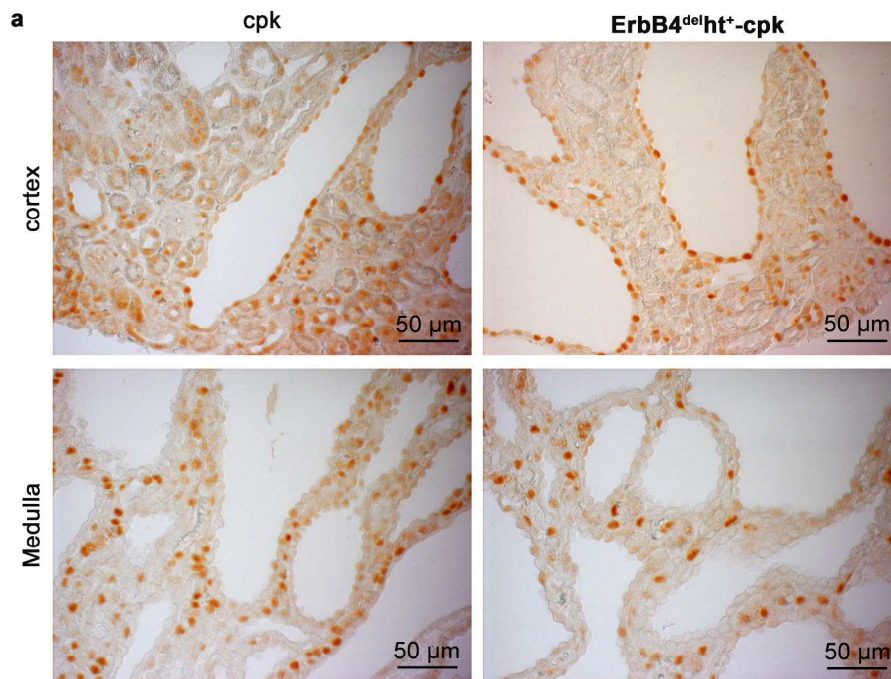


Supplementary Figure S1. BrdU immunostaining in wild-type and ErbB4delht+ mouse kidneys. (a) Representative photos of BrdU immunostaining of kidney cortex of wild-type (n = 8) and ErbB4delht+ mice (n = 10). BrdU: brown. (b) Quantification of BrdU positive cells per high power field in (a). P > 0.05. 144x133mm (600 x 600 DPI)



Supplementary Figure S2. Cyclin D1 immunostaining in the kidneys of ErbB4^{delht+}-cpk and cpk mice. (a) Representative photos of cyclin D1 immunostaining (brown) in the cortex (n = 7) and medulla of ErbB4^{delht+}-cpk and cpk mice (n = 8). (b) Quantification of cyclin D1 positive cells per high power field in (a). *P < 0.05.
143x182mm (600 x 600 DPI)