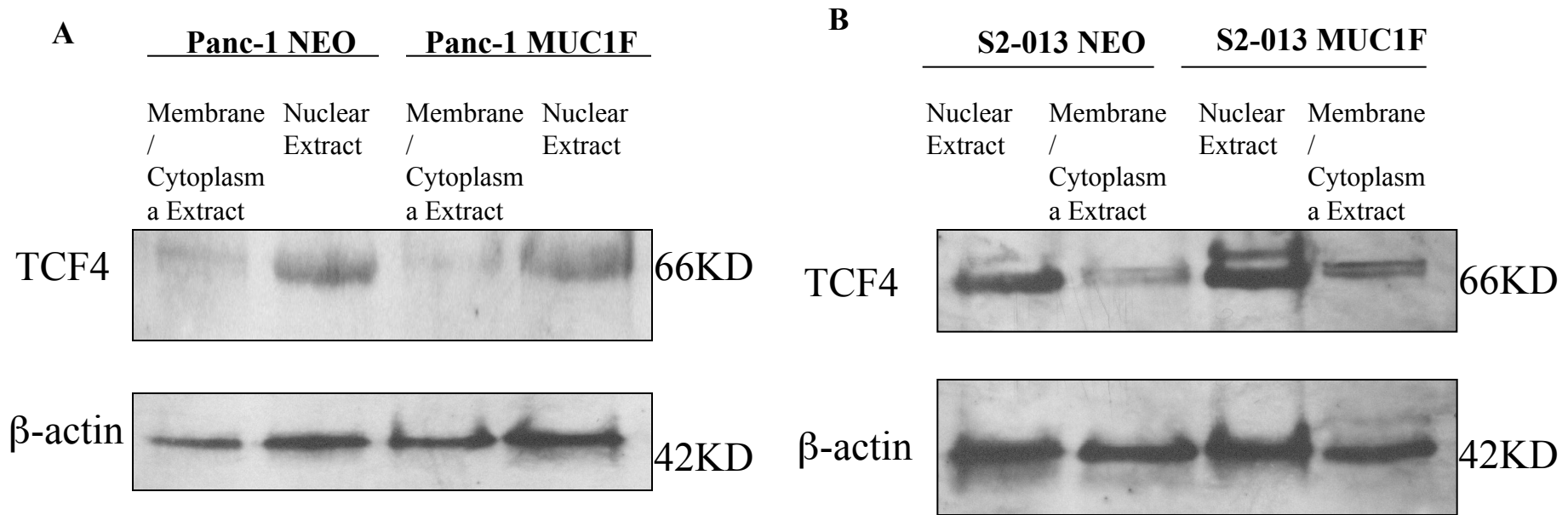


Figure S1



Supplemental Figure 1. Steady-state levels of nuclear LEF-1/Tcf-4 complex in two different human pancreatic cancer cell lines: Panc-1, S2-013.

Western blots of membrane/cytoplasmic extracts and nuclear extracts from (A) Panc-1.MUC1F, Panc-1.NEO, (B) S2-013.MUC1F, S2-013.NEO were probed with antibodies to TCF4 or beta actin, as indicated.