

Crosslinked chromatin complex

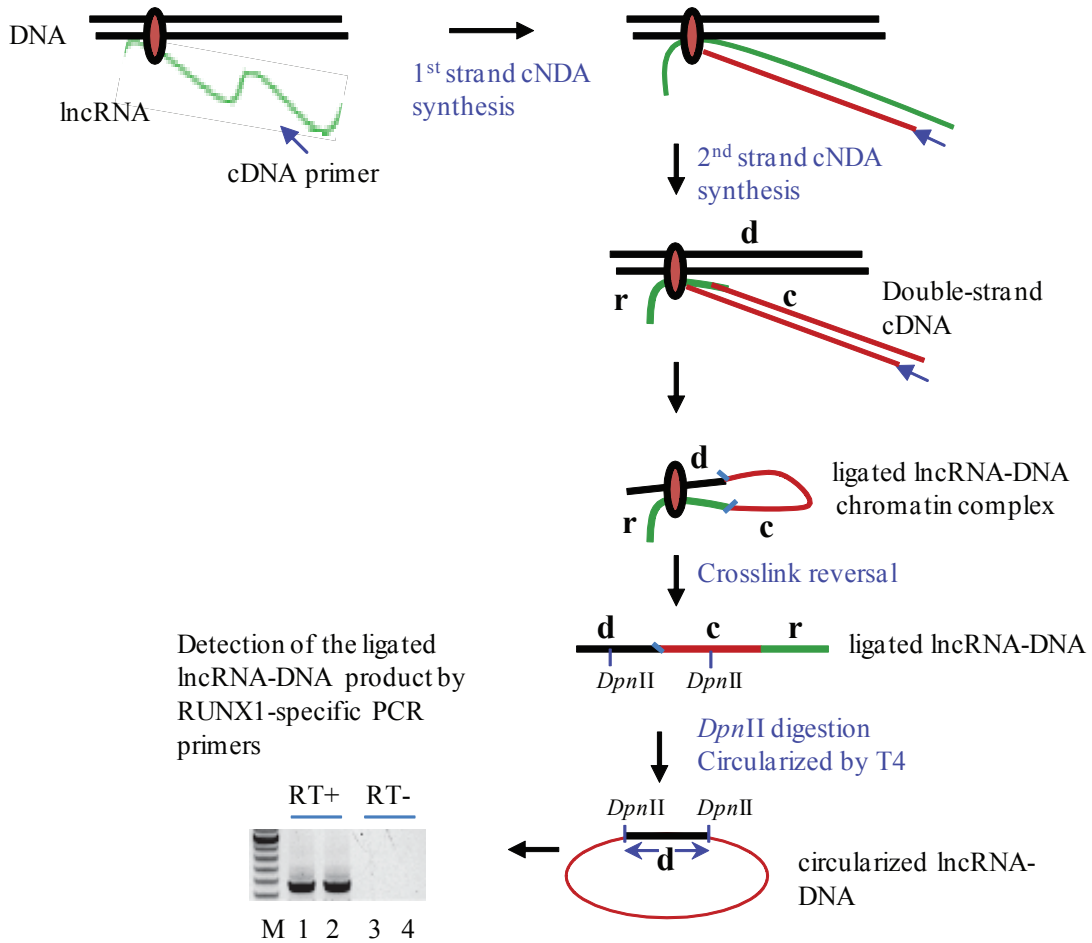
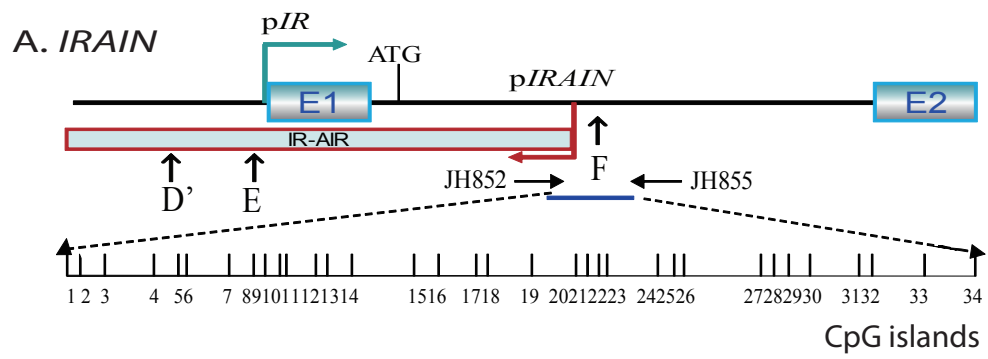


Figure S1. A modified R3C method to detect the chromatin DNA-interacted RNAs





B. K562 DNA methylation

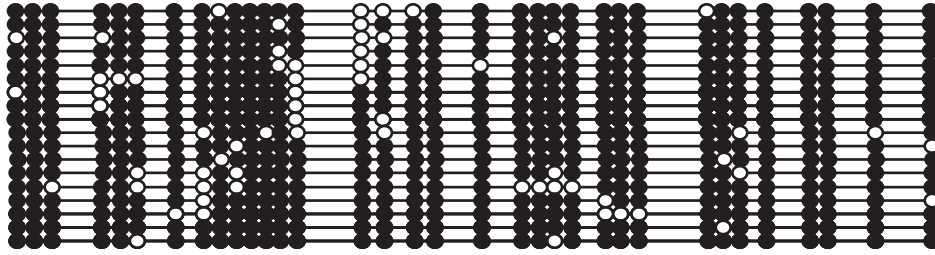
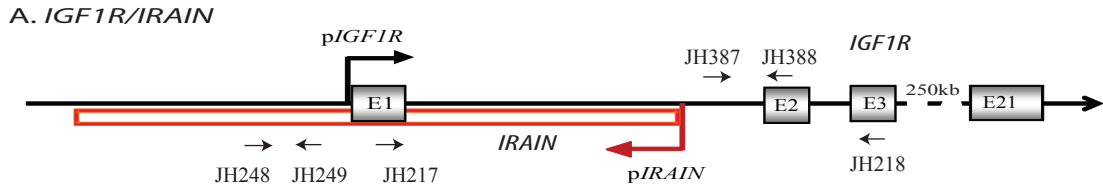


Figure S3. Fully methylated *IRAIN* promoter in K562 cells



**B. IGF1R/IRAIN preRNAs and RNAs**

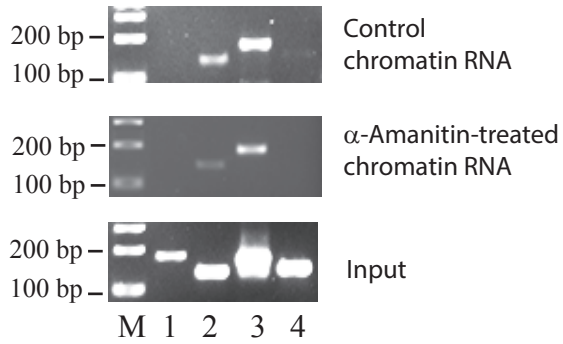


Figure S4. Chromatin-bound RNA in *α*-amanitin treated Kg-1 cells

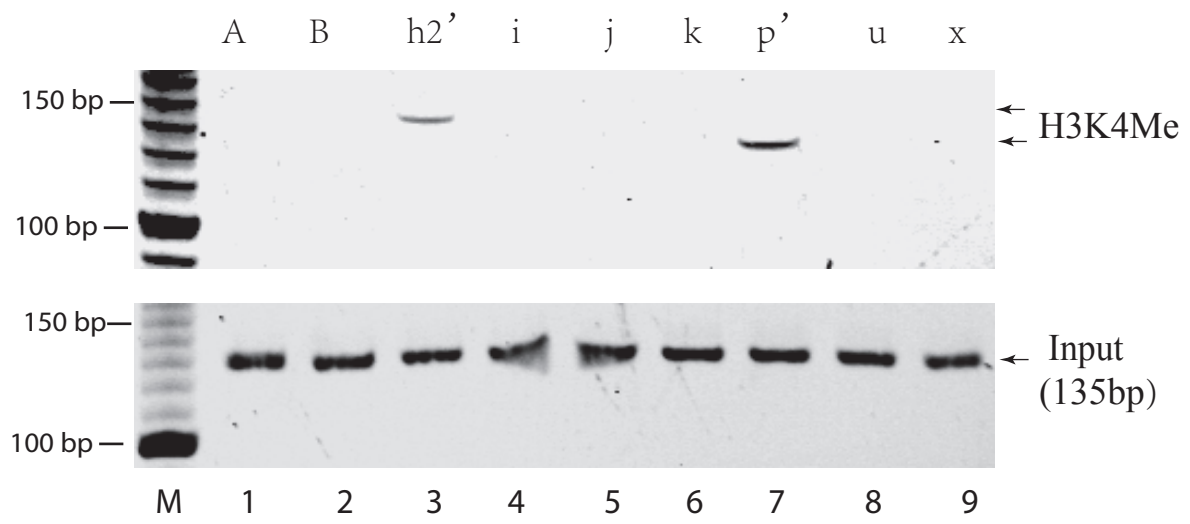


Fig.S5 Active chromatin marker H3K4Me in the *IGF1R* promoter and the enhancer

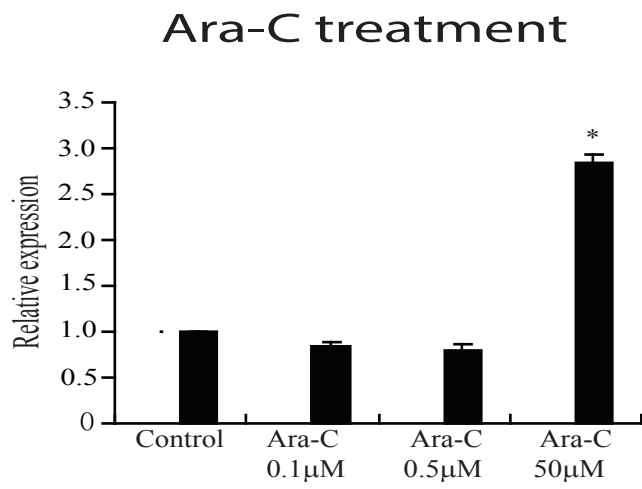
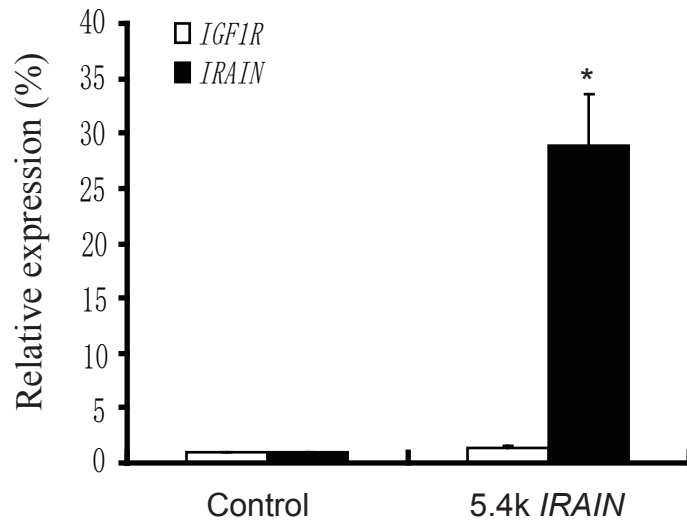


Figure S6. Upregulation of *IRAIN* lncRNA by Ara-C

### A. IRAIN overexpression



### B. IRAIN knockdown

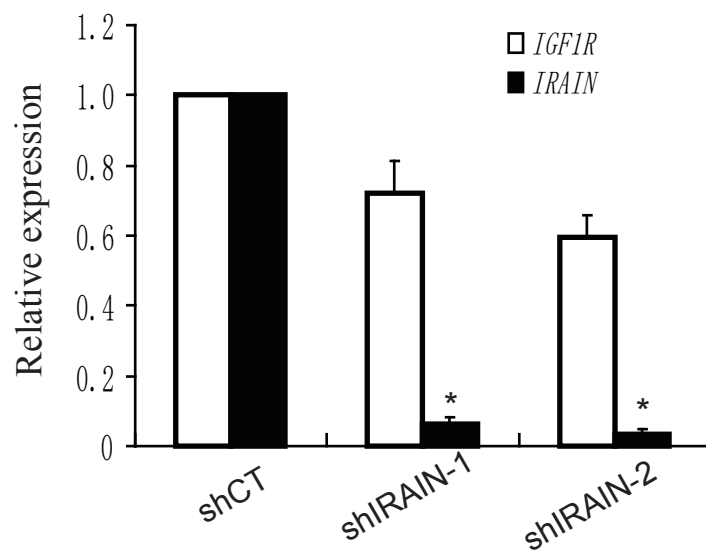


Figure S7. *IGF1R* expression in IRAIN overexpressed and knocked-down cells

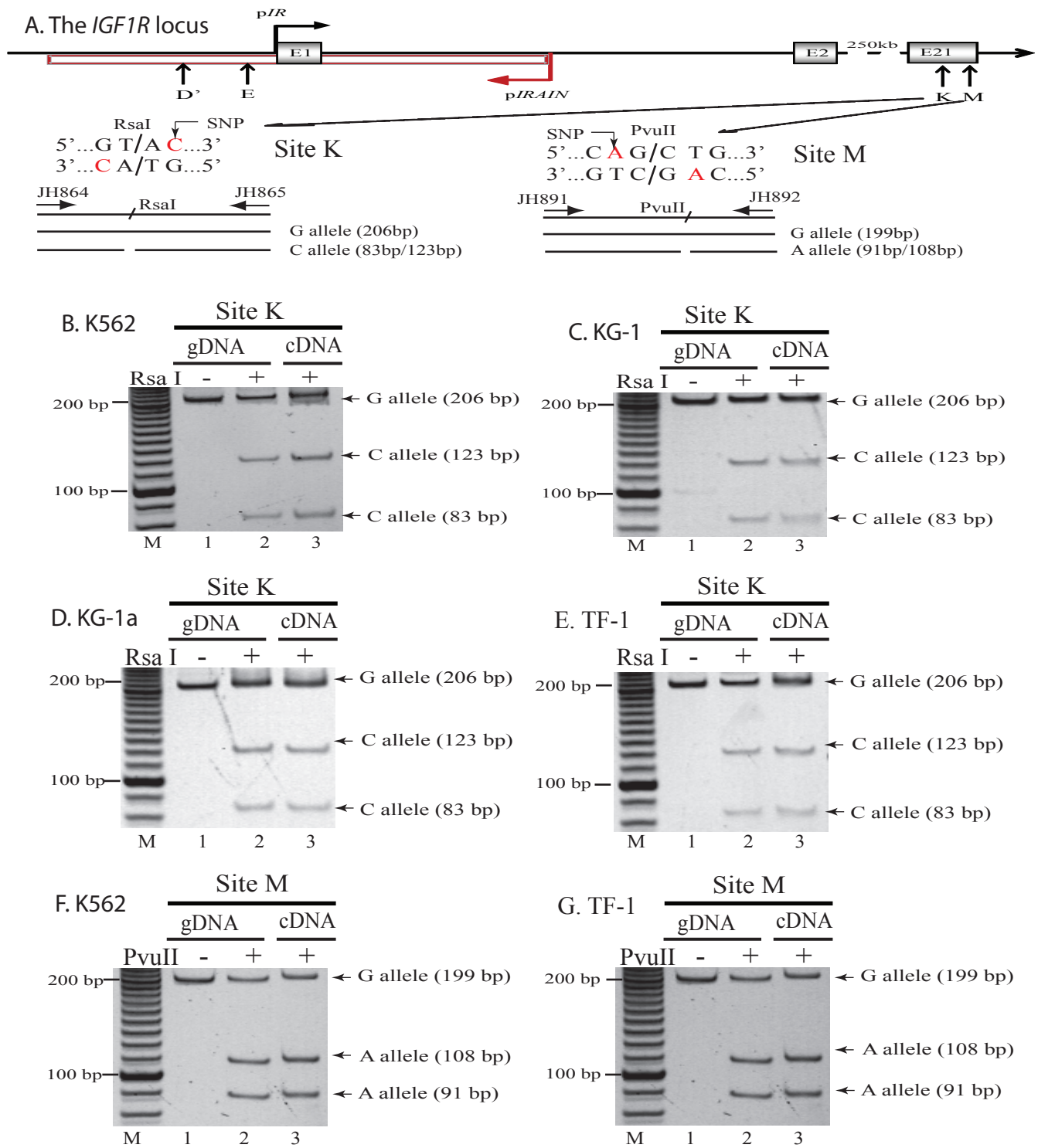
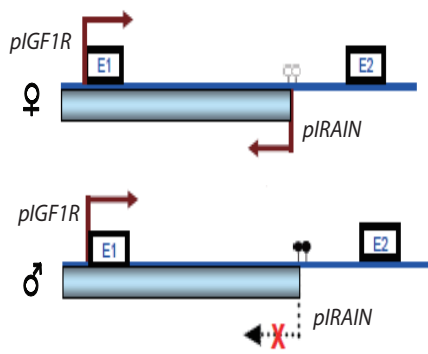


Figure S8. Biallelic expression of the *IGF1R* sense coding RNA



A. The *IRAIN/IGF1R* imprinting locus



B. The *Igf2r/Airn* imprinting locus

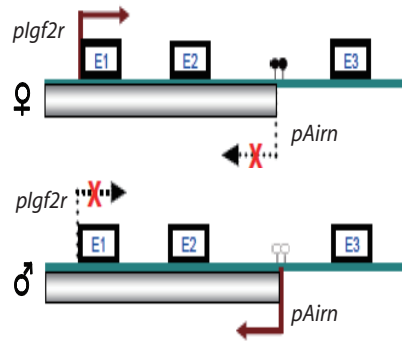


Figure S9. Allelic expression of the human *IRAIN/IGF1R* locus and the mouse *Igf1r/Airn* locus