

Supplementary Figure 1

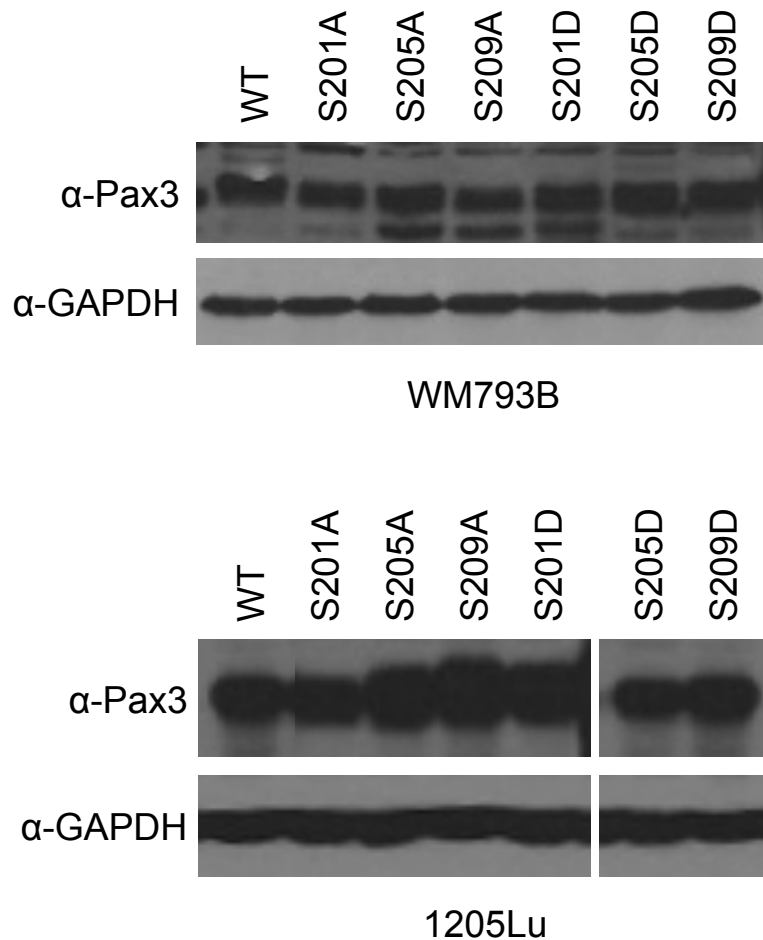
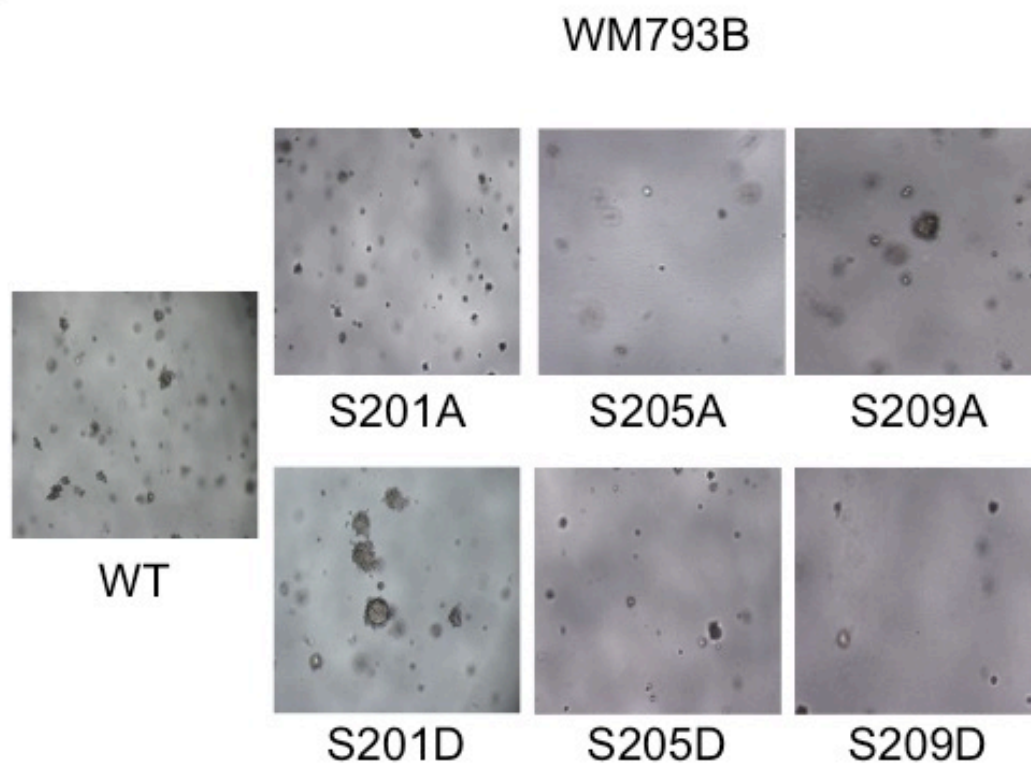


Figure S1: Ectopic expression of Pax3 and Pax3 phosphomutants in WM793B and 1205Lu melanoma cells. Total cell extracts were made from each of the melanoma cell lines WM793 (top panels) or 1205Lu (bottom panels) stably expressing wild-type FLAG-Pax3 or the indicated FLAG-Pax3 phospho-mutant. The presence of ectopically expressed Pax3 was determined by Western blot analysis on 25 μ g of total cell extract using antibodies specific for Pax3, as described in the Methods (Appendix S1).

Supplementary Figure 2

A.



B.

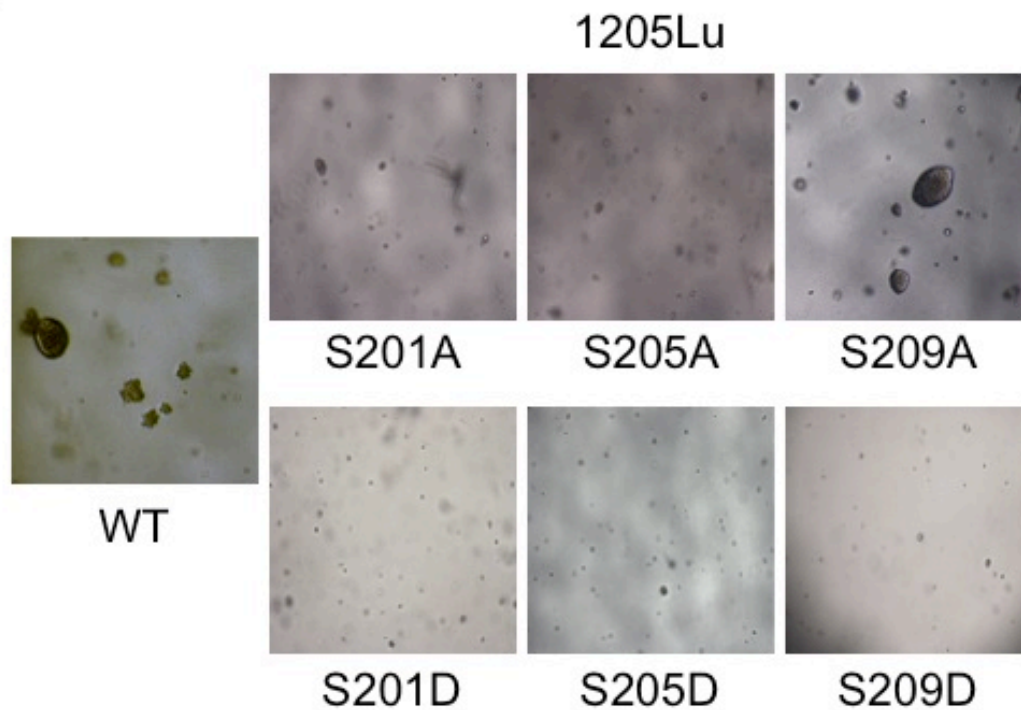


Figure S2: Representative phase contrast images of soft agar colony formation in (A) WM793B and (B) 1205Lu melanoma cells stably expressing wild type Pax3 (WT) or the indicated Pax3 phosphomutant.