

Supplementary material for

Espl regulates the ESX-1 secretion system in response to ATP levels in *Mycobacterium tuberculosis*

Ming Zhang^{1,3,†}, Jeffrey M. Chen^{1,4,†}, Claudia Sala¹, Jan Rybniker^{1,2}, Neeraj Dhar¹ and Stewart T. Cole^{1*}

¹ Ecole Polytechnique Fédérale de Lausanne, Global Health Institute,
Station 19, CH-1015, Lausanne, Switzerland

² 1st Department of Internal Medicine, University of Cologne, D-50937
Cologne, Germany

Present addresses:

³ Department of Biochemistry, Center of Immunity and Infection, University of
Lausanne, Epalinges, Switzerland

⁴ Vaccine and Infectious Disease Organization – International Vaccine Centre,
University of Saskatchewan, Saskatoon, Canada

† Contributed equally

* Corresponding author:

Prof. S.T. Cole

Ecole Polytechnique Fédérale de Lausanne, Global Health Institute

Station 19, 1015 Lausanne, Switzerland

Tel. +41 21 693 1851/ Fax +41 21 693 1790

Email: stewart.cole@epfl.ch

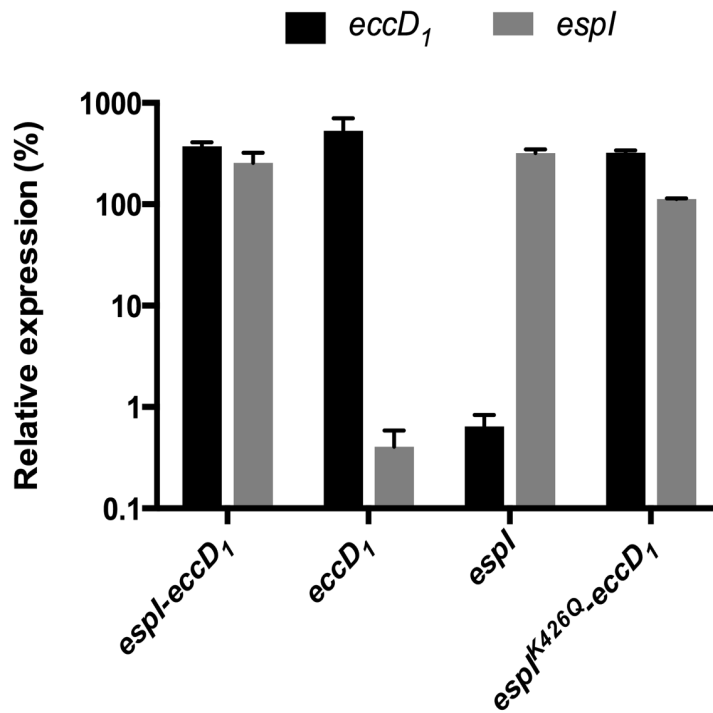


Fig. S1. Quantitative RT-PCR analysis of mRNA levels in *espI*::Tn mutant transformed with indicated plasmids. Relative expression levels of *espI* (black bars) and *eccD*₁ (grey bars) were calculated using the $\Delta\Delta C_t$ method, normalizing transcripts levels to *sigA* signals. Data are shown as percentage relative to wild-type *M. tuberculosis*.

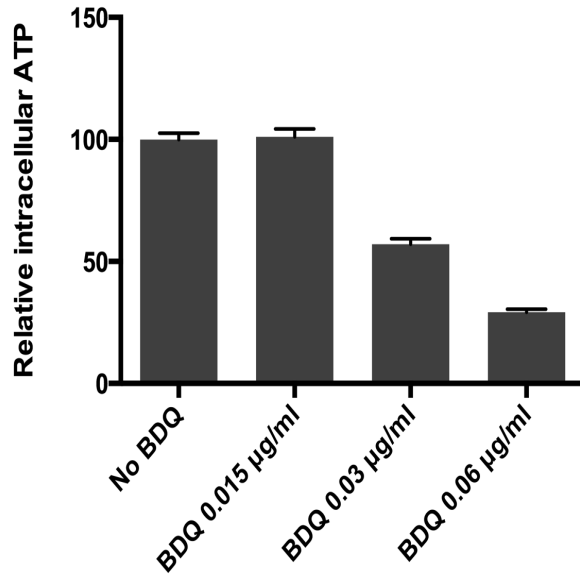


Fig. S2. Bactiter-Glo Assay of intracellular ATP levels in wild-type *M. tuberculosis* in 7H9 growing medium treated with BDQ for 8 hours at indicated concentrations. Data are shown as percentage relative to no treatment.

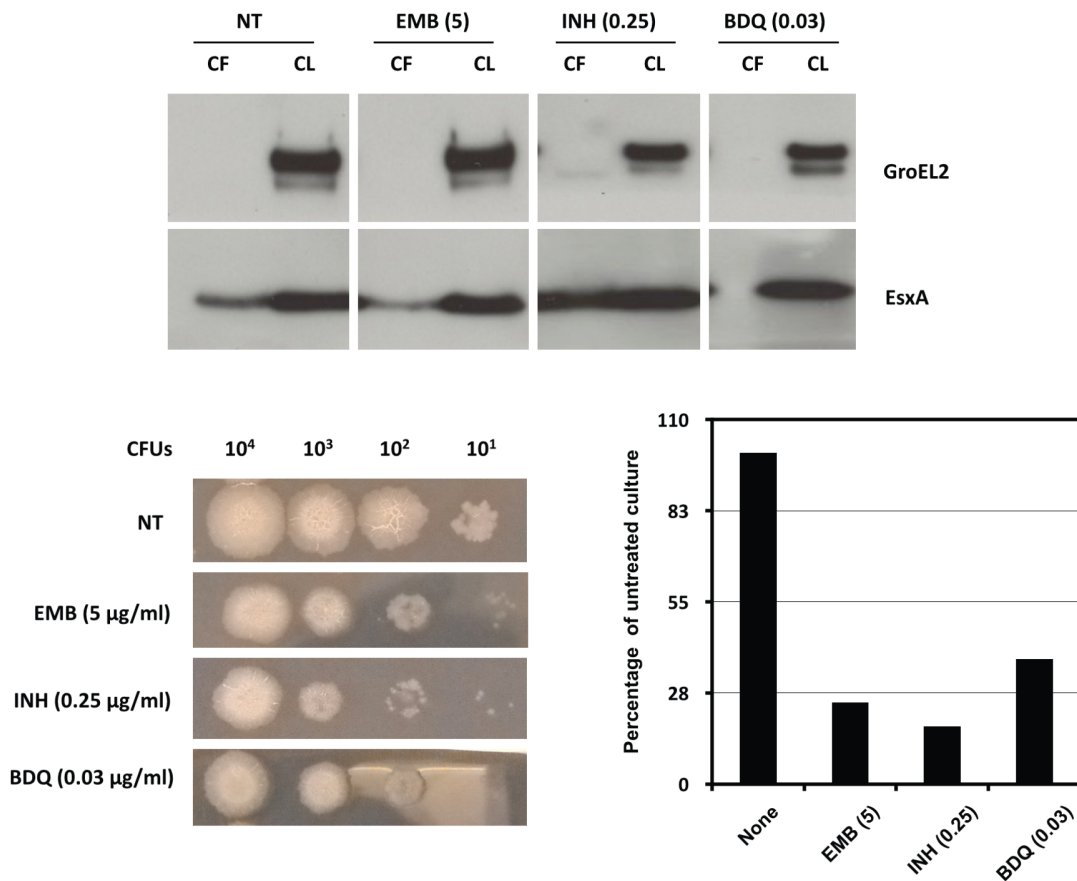


Fig. S3. Effect of drug treatment on ESX-1 secretion and growth

Top panel: Immunoblots of cell lysates (CL) at 5 µg/well and culture filtrates (CF) at 10 µg/well of wild-type *M. tuberculosis* Erdman strain grown in Sauton's medium without Tween-80 with addition of the indicated compounds for 5 days.

Bottom panels: Left – WT *M. tuberculosis* were treated with drugs at the indicated concentrations and 5 µl of cell suspension, containing the number of CFUs indicated per strain, were spotted on agar plates. Right – Survival of WT *M. tuberculosis* after treatment with drugs at the indicated concentrations by measuring OD₆₀₀ of cells in Sauton's medium. Data are representative of 2 independent experiments.

Antibodies used are indicated. NT – not treated.