

Supplementary Figure 5

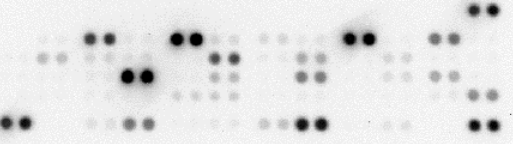
MP-MCF7



MP-MCF7 treated TGFβ



MP-MDA



Inventar & Bestandspunkte

PSM
Beschreibung der Bestandspunkte

Inhalt	Verf. Ort	Bestandort	Bestandort
0.0	0.0		
0.1	0.1		
0.2	0.2		
0.3	0.3		
0.4	0.4		
0.5	0.5		
0.6	0.6		
0.7	0.7		
0.8	0.8		
0.9	0.9		
1.0	1.0		
1.1	1.1		
1.2	1.2		
1.3	1.3		
1.4	1.4		
1.5	1.5		
1.6	1.6		
1.7	1.7		
1.8	1.8		
1.9	1.9		
2.0	2.0		
2.1	2.1		
2.2	2.2		
2.3	2.3		
2.4	2.4		
2.5	2.5		
2.6	2.6		
2.7	2.7		
2.8	2.8		
2.9	2.9		
3.0	3.0		
3.1	3.1		
3.2	3.2		
3.3	3.3		
3.4	3.4		
3.5	3.5		
3.6	3.6		
3.7	3.7		
3.8	3.8		
3.9	3.9		
4.0	4.0		
4.1	4.1		
4.2	4.2		
4.3	4.3		
4.4	4.4		
4.5	4.5		
4.6	4.6		
4.7	4.7		
4.8	4.8		
4.9	4.9		
5.0	5.0		
5.1	5.1		
5.2	5.2		
5.3	5.3		
5.4	5.4		
5.5	5.5		
5.6	5.6		
5.7	5.7		
5.8	5.8		
5.9	5.9		
6.0	6.0		
6.1	6.1		
6.2	6.2		
6.3	6.3		
6.4	6.4		
6.5	6.5		
6.6	6.6		
6.7	6.7		
6.8	6.8		
6.9	6.9		
7.0	7.0		
7.1	7.1		
7.2	7.2		
7.3	7.3		
7.4	7.4		
7.5	7.5		
7.6	7.6		
7.7	7.7		
7.8	7.8		
7.9	7.9		
8.0	8.0		
8.1	8.1		
8.2	8.2		
8.3	8.3		
8.4	8.4		
8.5	8.5		
8.6	8.6		
8.7	8.7		
8.8	8.8		
8.9	8.9		
9.0	9.0		
9.1	9.1		
9.2	9.2		
9.3	9.3		
9.4	9.4		
9.5	9.5		
9.6	9.6		
9.7	9.7		
9.8	9.8		
9.9	9.9		
10.0	10.0		

Inventar & Bestandspunkte

INVENTAR

Inhalt	Verf. Ort	Bestandort	Bestandort
0.0	0.0		
0.1	0.1		
0.2	0.2		
0.3	0.3		
0.4	0.4		
0.5	0.5		
0.6	0.6		
0.7	0.7		
0.8	0.8		
0.9	0.9		
1.0	1.0		
1.1	1.1		
1.2	1.2		
1.3	1.3		
1.4	1.4		
1.5	1.5		
1.6	1.6		
1.7	1.7		
1.8	1.8		
1.9	1.9		
2.0	2.0		
2.1	2.1		
2.2	2.2		
2.3	2.3		
2.4	2.4		
2.5	2.5		
2.6	2.6		
2.7	2.7		
2.8	2.8		
2.9	2.9		
3.0	3.0		
3.1	3.1		
3.2	3.2		
3.3	3.3		
3.4	3.4		
3.5	3.5		
3.6	3.6		
3.7	3.7		
3.8	3.8		
3.9	3.9		
4.0	4.0		
4.1	4.1		
4.2	4.2		
4.3	4.3		
4.4	4.4		
4.5	4.5		
4.6	4.6		
4.7	4.7		
4.8	4.8		
4.9	4.9		
5.0	5.0		
5.1	5.1		
5.2	5.2		
5.3	5.3		
5.4	5.4		
5.5	5.5		
5.6	5.6		
5.7	5.7		
5.8	5.8		
5.9	5.9		
6.0	6.0		
6.1	6.1		
6.2	6.2		
6.3	6.3		
6.4	6.4		
6.5	6.5		
6.6	6.6		
6.7	6.7		
6.8	6.8		
6.9	6.9		
7.0	7.0		
7.1	7.1		
7.2	7.2		
7.3	7.3		
7.4	7.4		
7.5	7.5		
7.6	7.6		
7.7	7.7		
7.8	7.8		
7.9	7.9		
8.0	8.0		
8.1	8.1		
8.2	8.2		
8.3	8.3		
8.4	8.4		
8.5	8.5		
8.6	8.6		
8.7	8.7		
8.8	8.8		
8.9	8.9		
9.0	9.0		
9.1	9.1		
9.2	9.2		
9.3	9.3		
9.4	9.4		
9.5	9.5		
9.6	9.6		
9.7	9.7		
9.8	9.8		
9.9	9.9		
10.0	10.0		

STARK INDUSTRIES

INVENTAR & BESTANDSPUNKTE

INHALT

0.0

0.1

0.2

0.3

0.4

0.5

0.6

0.7

0.8

0.9

1.0

1.1

1.2

1.3

1.4

1.5

1.6

1.7

1.8

1.9

2.0

2.1

2.2

2.3

2.4

2.5

2.6

2.7

2.8

2.9

3.0

3.1

3.2

3.3

3.4

3.5

3.6

3.7

3.8

3.9

4.0

4.1

4.2

4.3

4.4

4.5

4.6

4.7

4.8

4.9

5.0

5.1

5.2

5.3

5.4

5.5

5.6

5.7

5.8

5.9

6.0

6.1

6.2

6.3

6.4

6.5

6.6

6.7

6.8

6.9

7.0

7.1

7.2

7.3

7.4

7.5

7.6

7.7

7.8

7.9

8.0

8.1

8.2

8.3

8.4

8.5

8.6

8.7

8.8

8.9

9.0

9.1

9.2

9.3

9.4

9.5

9.6

9.7

9.8

9.9

10.0