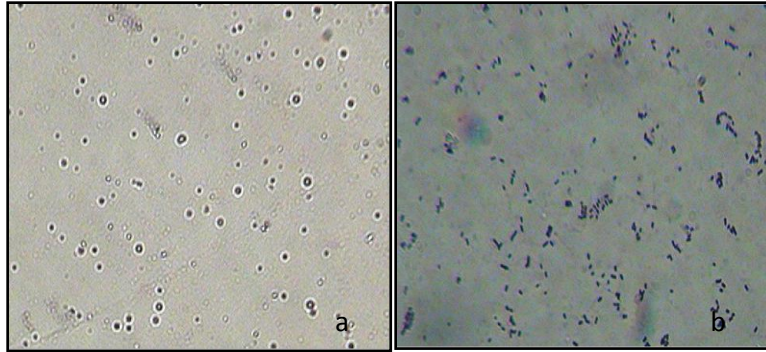


Additional file 1



Microscopic appearance of *K. pneumoniae* B5055: encapsulated untreated bacteria (a) depolymerase treated bacteria (b). The bacterial cells were taken on a clean glass slide. A drop of safranin was mixed with bacterial culture and the suspension was spread neatly on the slide. The smear was stained with crystal violet for 1 min, washed gently and observed under a light microscope (40X).