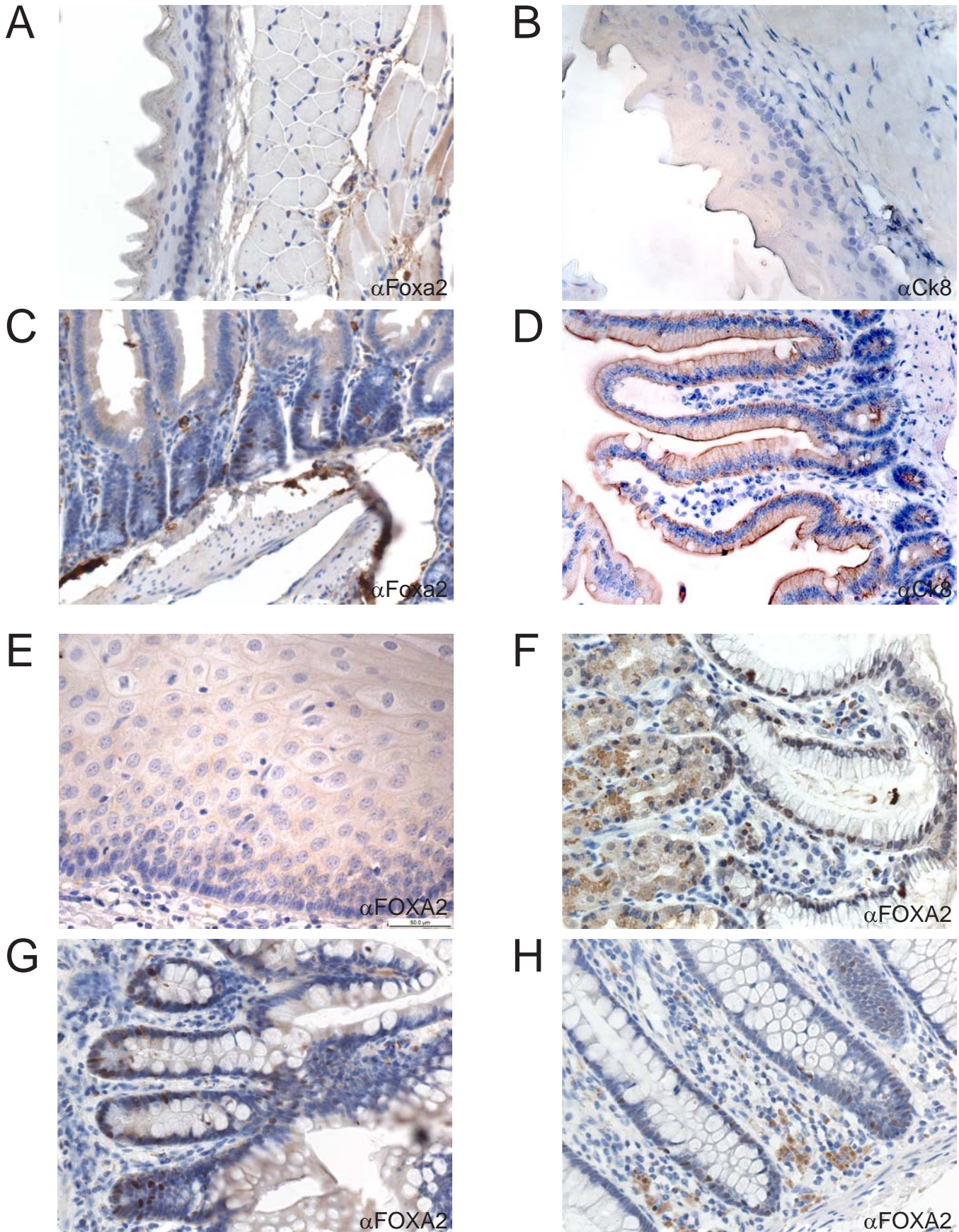


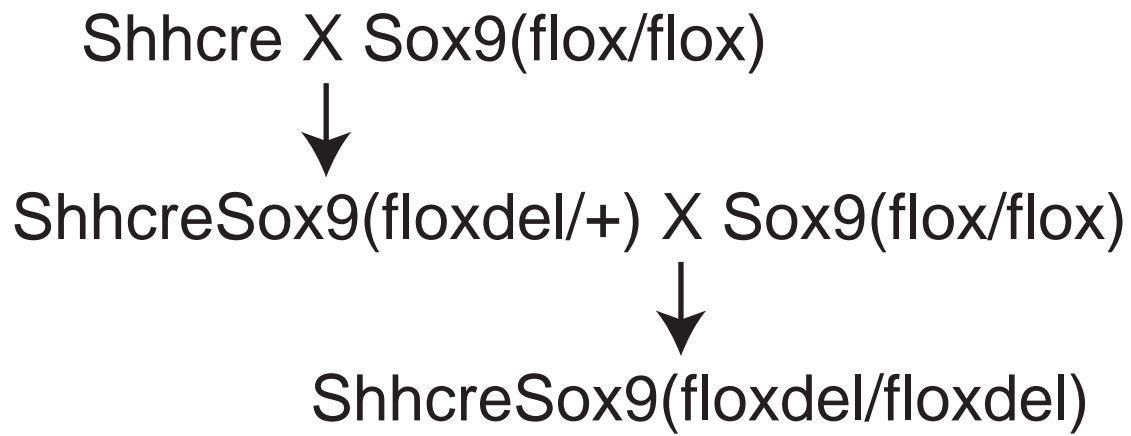
Supplemental Figure 1



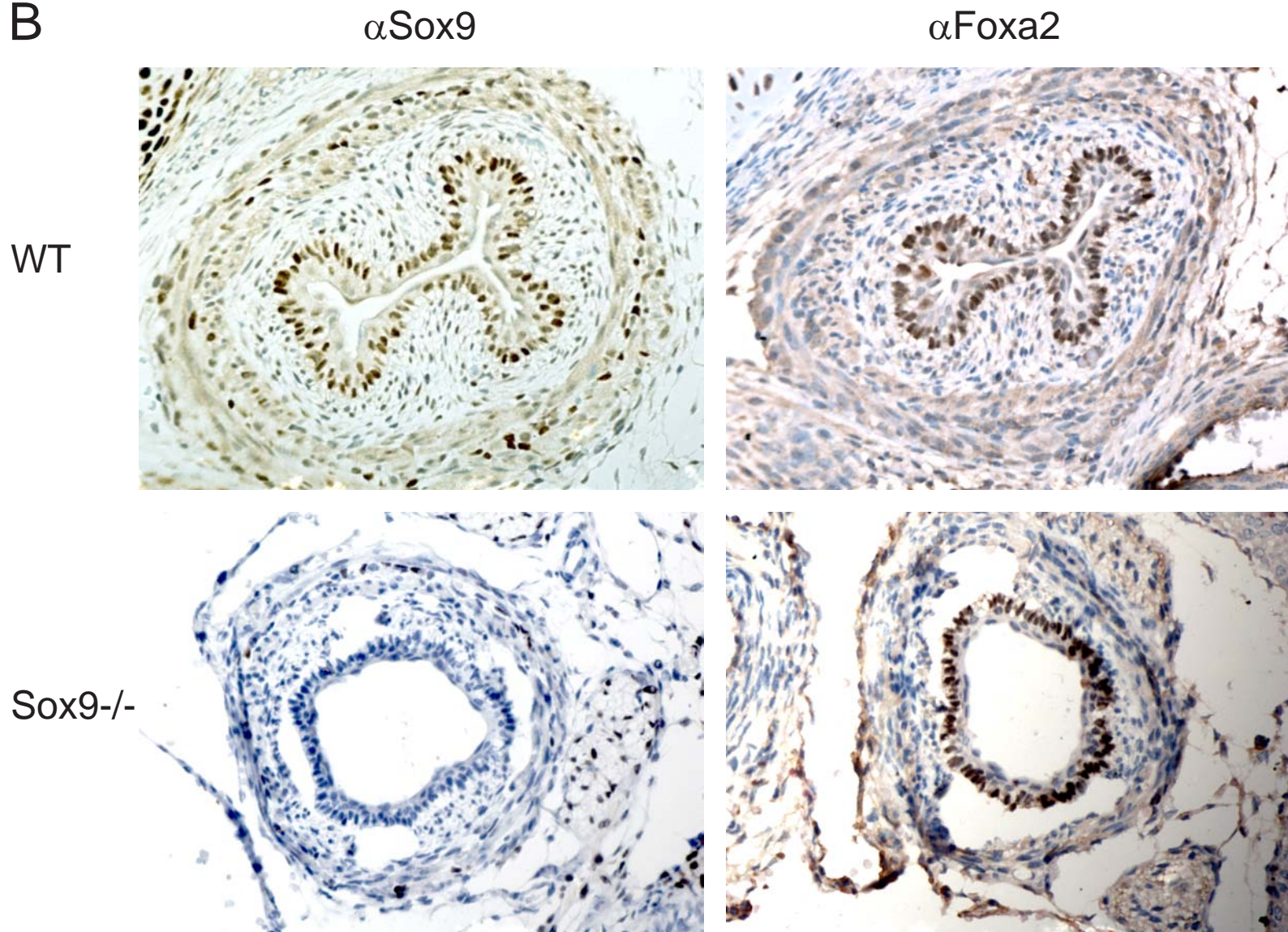
Supplemental Figure 1: Foxa2 expression in adult mouse and human gastrointestinal tissues. Foxa2 immunohistochemistry in A) mouse esophagus and C) mouse small intestine. Ck8 immunohistochemistry of B) mouse esophagus and D) mouse small intestine. FOXA2 immunohistochemistry in E) human esophagus, F) human stomach, G) human small intestine, and H) human colon. All 40X.

Supplemental Figure 2

A



B



Supplemental Figure 2: Generation of mice with esophageal loss of Sox9. A) Breeding strategy employed as described in text. B) Sox9 and Foxa2 immunohistochemistry in representative E17.5 wild-type and ShhcreSox9(floxdel/floxdel) embryos, notated as WT and Sox9^{-/-}, respectively. All 40X.

SUPPLEMENTAL TABLE 1: PRIMERS

Human Quantitative

FOXA2	F	5'-AGCGCCCACGTACGACGACATG-3'
	R	5'-AGAGCCCGAGGGCTACTCCT-3'
SHH	F	5'-ATCTCCAGAAACTCCGAGCGATTTAAG-3'
	R	5'-AAGCGTTCAACTTGTCTTACACCTC-3'
PTCH	F	5'-TTCCAGTTAATGACTCCCAAGCAAATG-3'
	R	5'-GCGACACTCTGATGAACCACCTC-3'
GLI1	F	5'-GAAGGTGATATGTCCAGCCCCAAC-3'
	R	5'-TCCCAACGGCAGTCAGTTTCATAC-3'
GLI2	F	5'-CACGGCTGACATTCGGCTAACG-3'
	R	5'-AGATTCAAACCCAAATGCTCCCTACC-3'
GLI3	F	5'-GCAACACTACCTCAAAGCGGGAAG-3'
	R	5'-GGCTGCTGCATGAAGACTGACC-3'
AGR2	F	5'-TGCTCCTTGTGGCCCTCTCC-3'
	R	5'-AGGGTCTGGGGCAGTTTGGGT-3'
CDX2	F	5'-CCTCGGCAGCCAAGTGAA-3'
	R	5'-GGCTTTCCTCCGGATGGT-3'
B-ACTIN	F	5'-CATCCACGAAACTACCTTCAACTCC-3'
	R	5'-GAGCCGCCGATCCACACG-3'

Human Qualitative

MUC2	F	5'-CTTCGCCTCCGACTGCCGAG-3'
	R	5'-TGTAGTGCGGGGTGCTGACC-3'

Qualitative PCR conditions: 40 cycles of 95° for 30 sec, 57° for 30 sec, 72° for 30 sec.

Mouse Quantitative

Ptch	F	5'-GAAGGCTACTGGCCGAAAG-3'
	R	5'-CTTCCACCCACAGCTCCTCC-3'
Gli1	F	5'-ACATCTCCGGGCGGTTCTTA-3'
	R	5'-AGCATCATTGAACCCCGAGT-3'

Gli2	F	5'-GAGAGCTCCGGGCTTTGTCA-3'
	R	5'-AGTGGAGGGTGCAGCCA-3'
Gli3	F	5'-AGAACTCACTTCCCTGCTCCTCAC-3'
	R	5'-GTGCTGACTGGACAACAACAAC-3'
Foxa2	F	5'-AGCACCATTACGCCTTCAAC-3'
	R	5'-CCTTGAGGTCCATTTTGTGG-3'
β -actin	F	5'-CCTTCTTGGGTATGGAATCCTGTGG-3'
	R	5'-ACTGTGTTGGCATAGAGGTCTTTACG-3'