

Development of Carbocyanine Dyes for PRMT Inhibition and Imaging

Sarmistha Halder Sinha,¹ Eric A. Owens,¹ You Feng,¹ Yan Xie,² Yaping Tu,² Maged Henary,^{*1} Y. George Zheng^{*1}

¹ Department of Chemistry, Georgia State University, PO Box 4098, Atlanta, Georgia 30302.

² Department of Pharmacology, Creighton University, 2500 California Plaza, Omaha, NE 68178

- Correspondence should be addressed to: mhenary1@gsu.edu or yzheng@gsu.edu

NMR and Mass Spectrometry Data of Synthesized Compounds

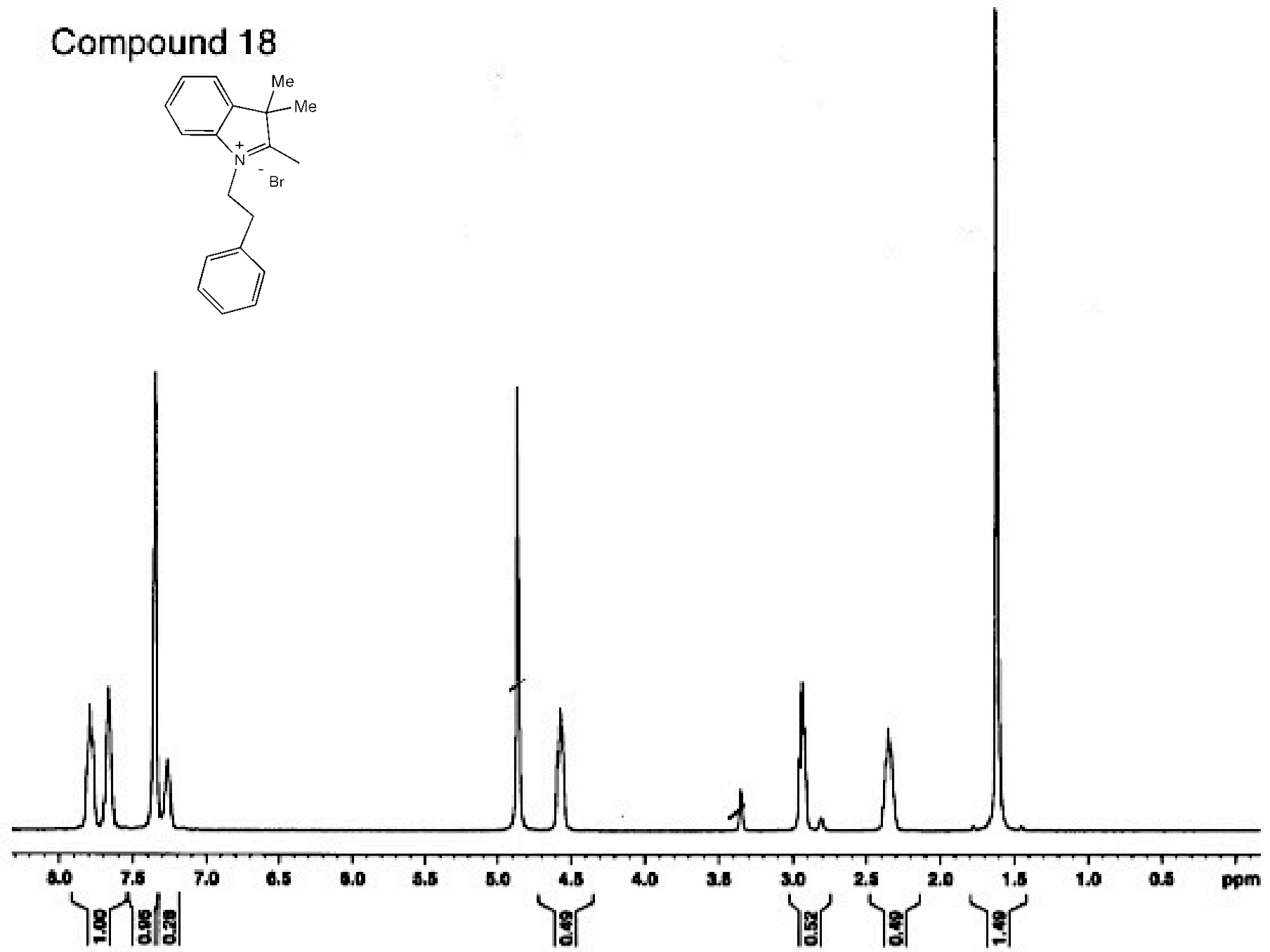
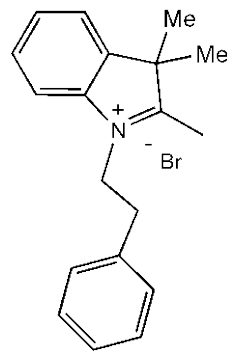
7.90
7.78
7.77
7.68
7.67
7.66
7.36
7.35
7.28
7.27
7.26

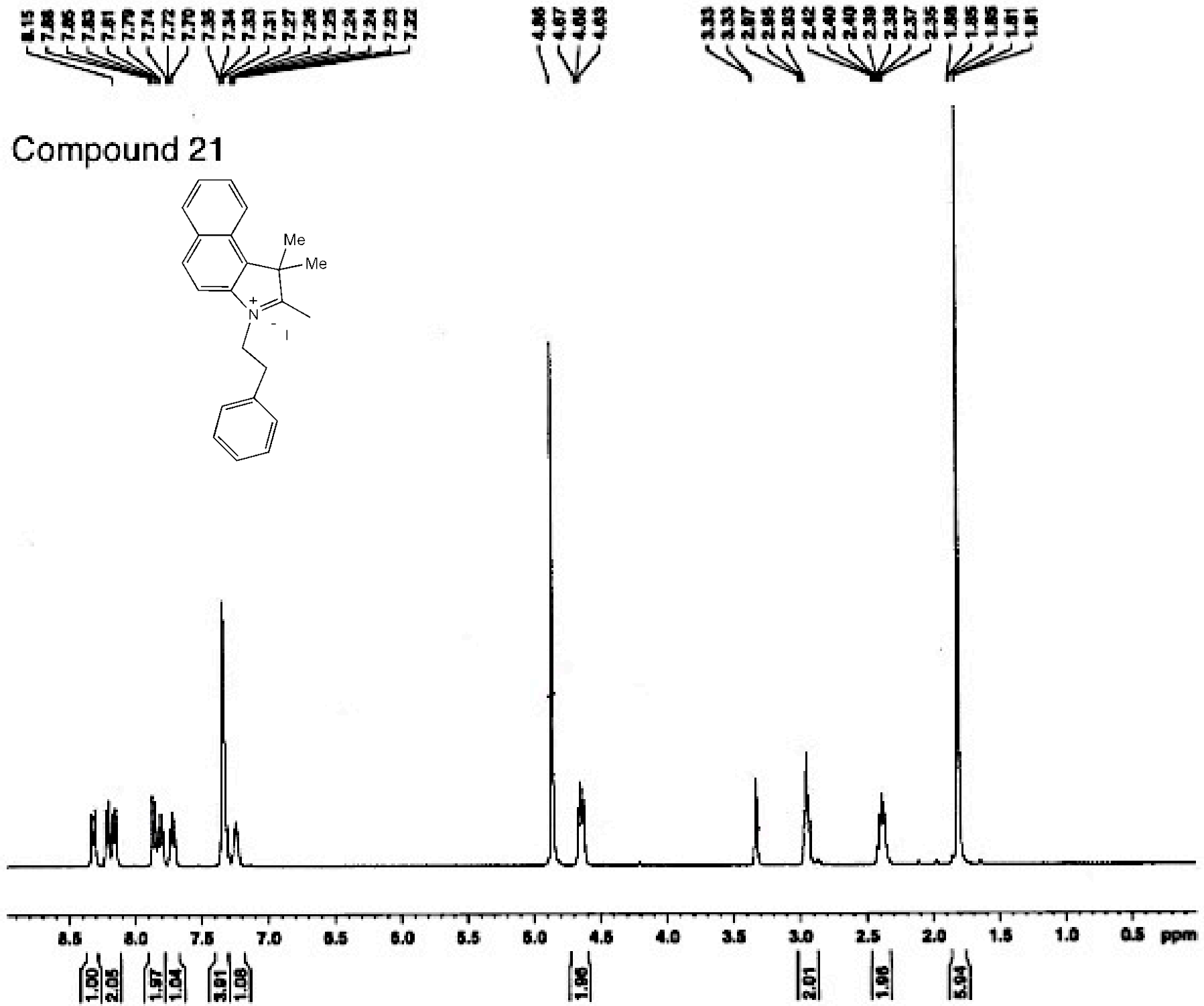
4.87
4.50
4.57
4.55

3.35
2.96
2.94
2.92
2.81
2.39
2.37
2.35
2.33

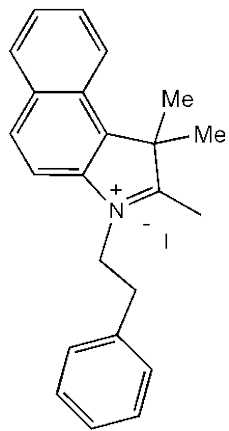
1.82

Compound 18

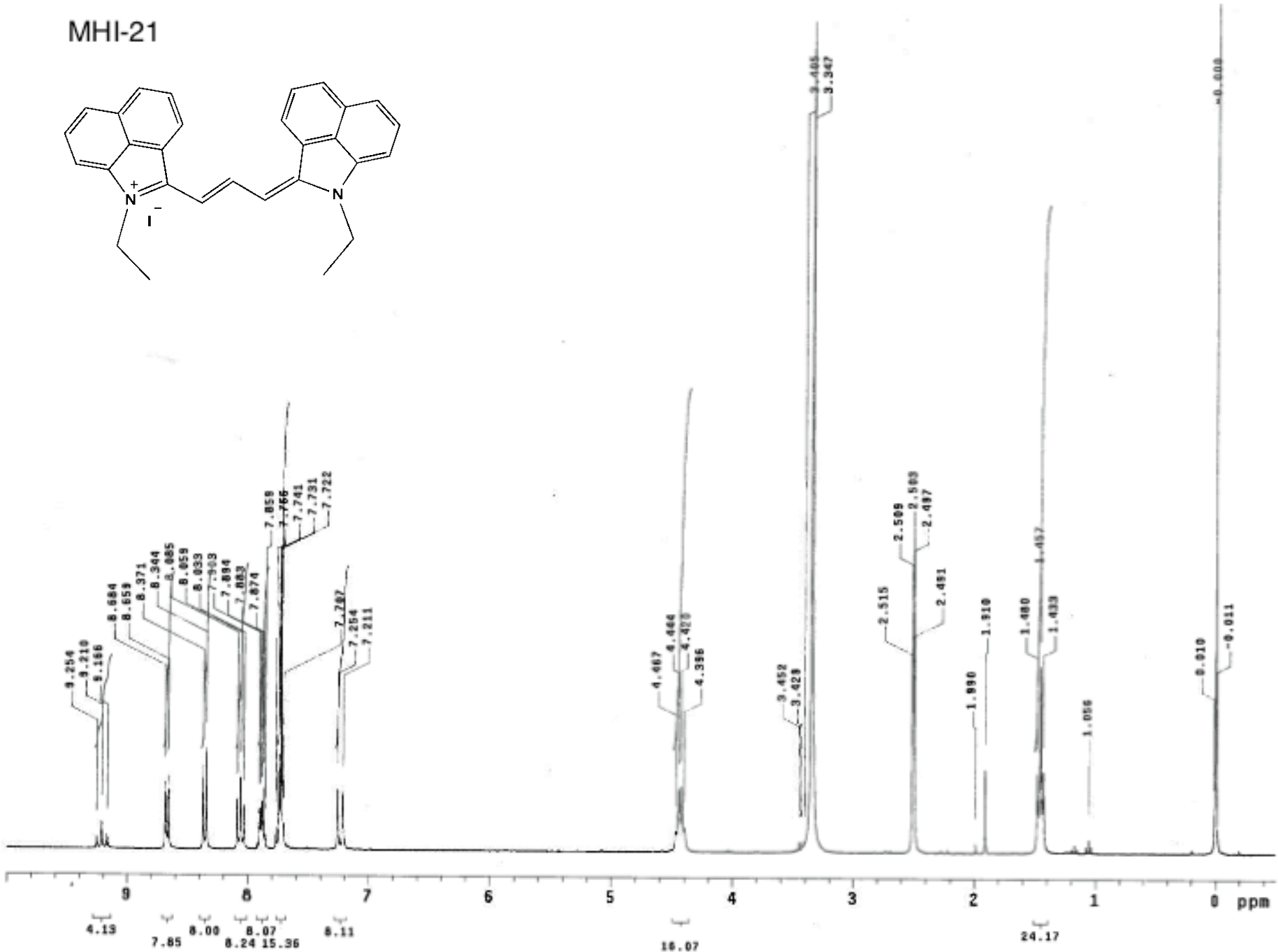
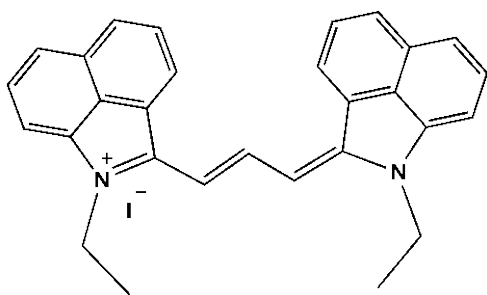




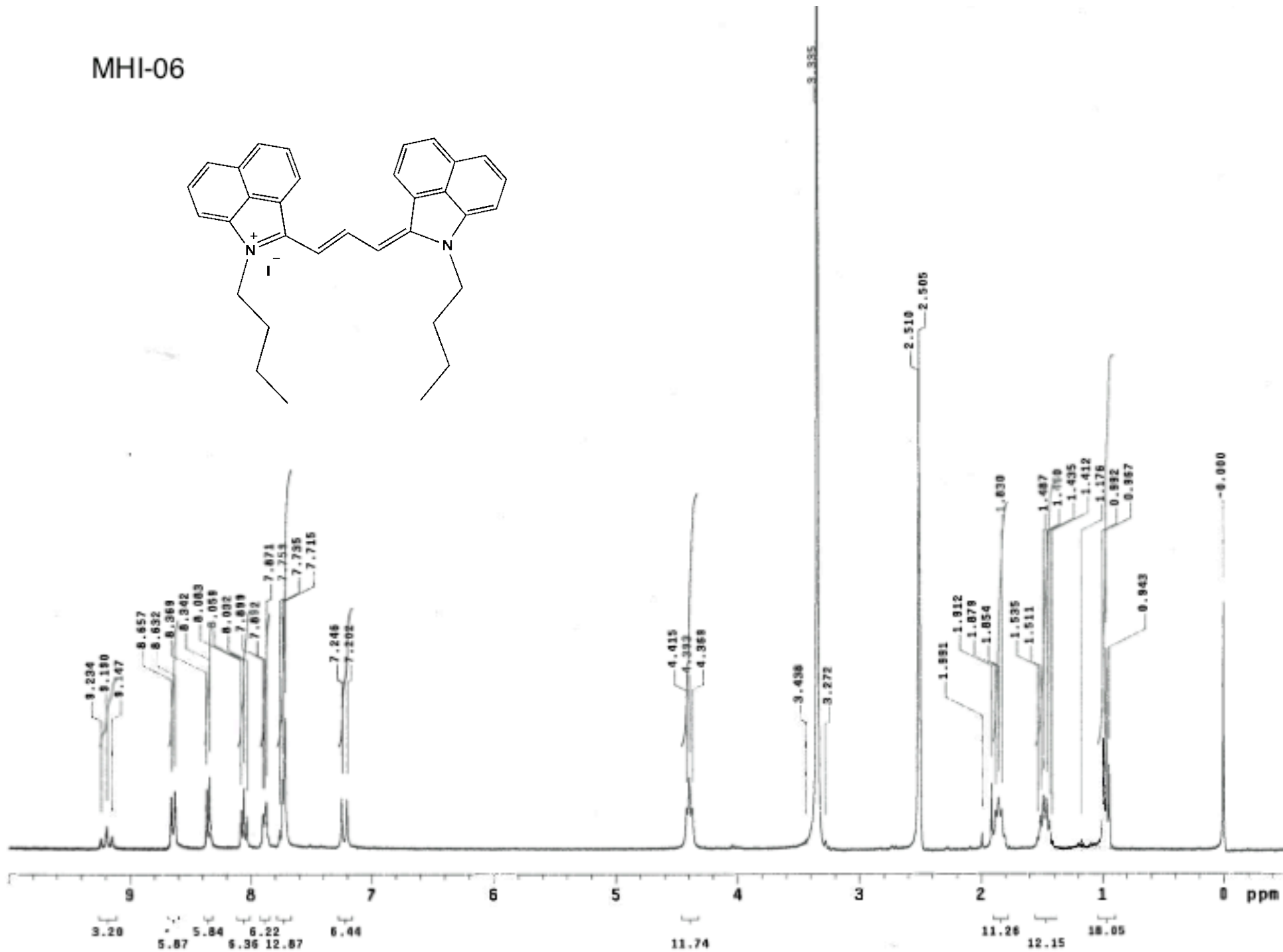
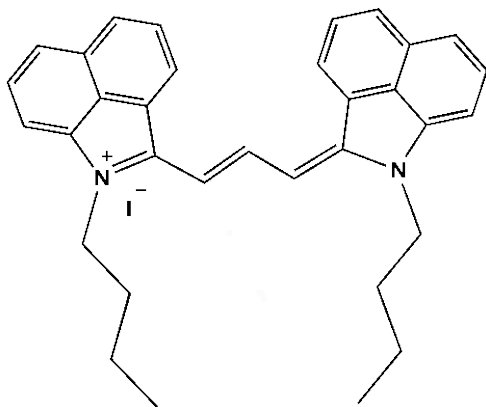
Compound 21



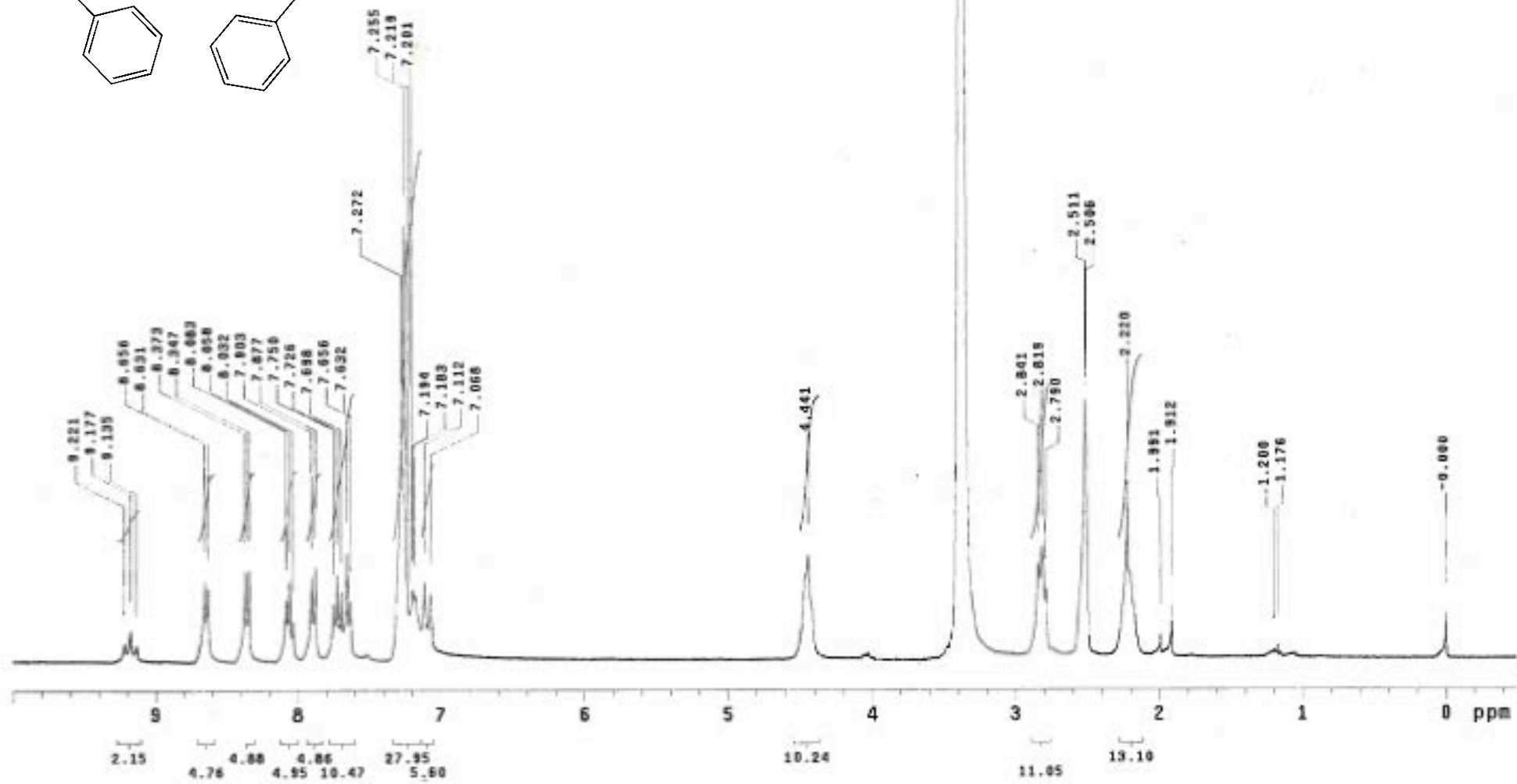
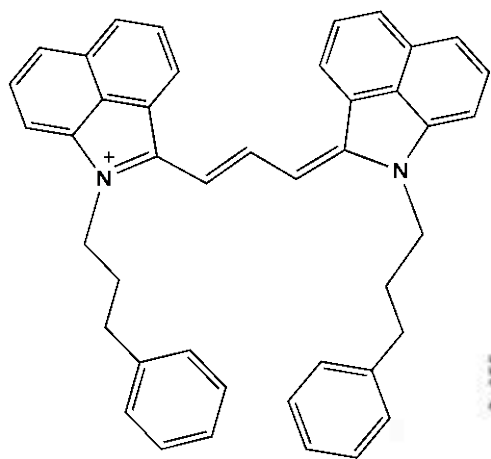
MHI-21



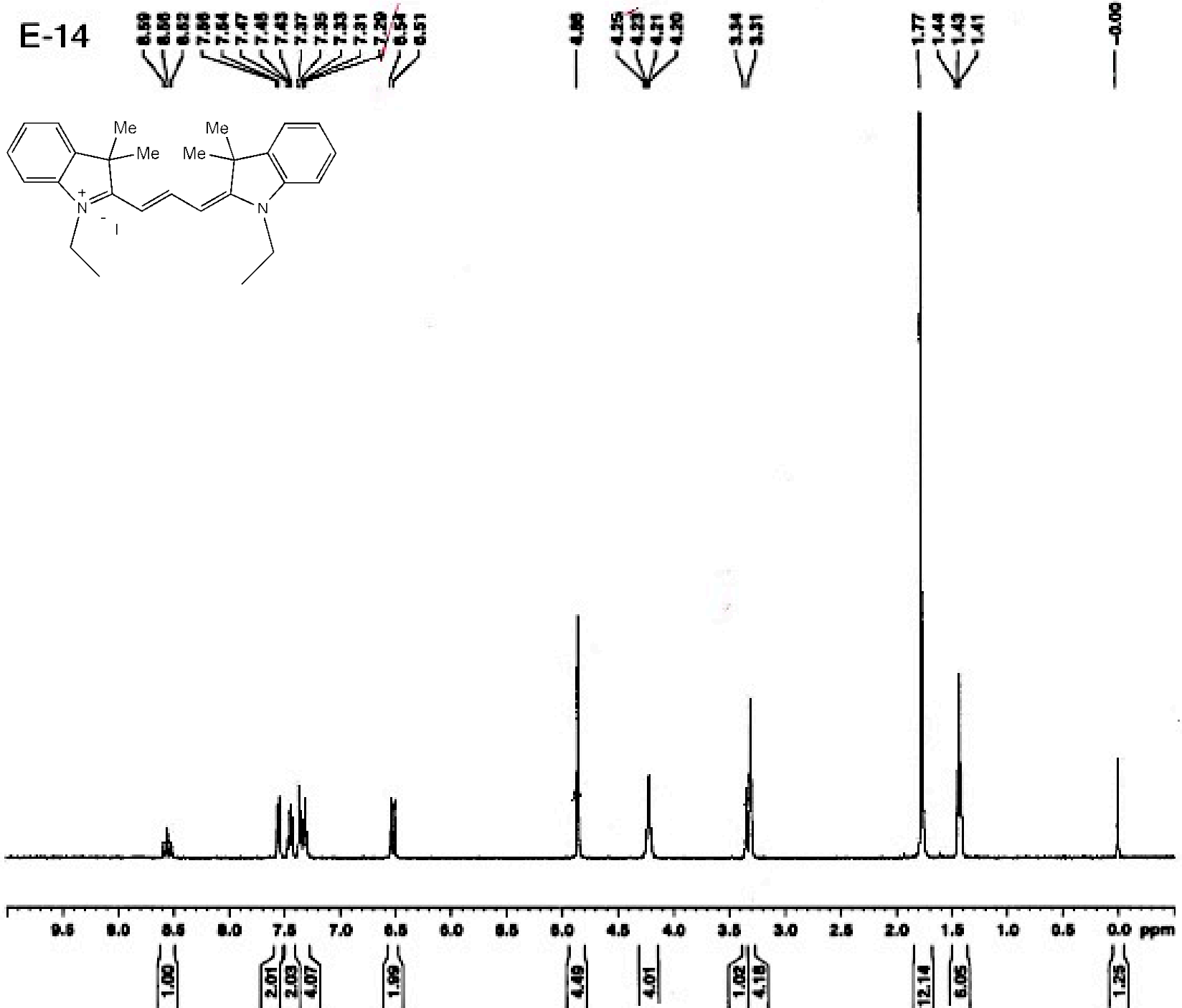
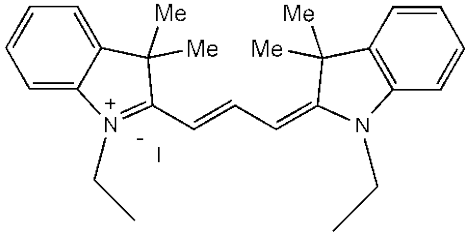
MHI-06



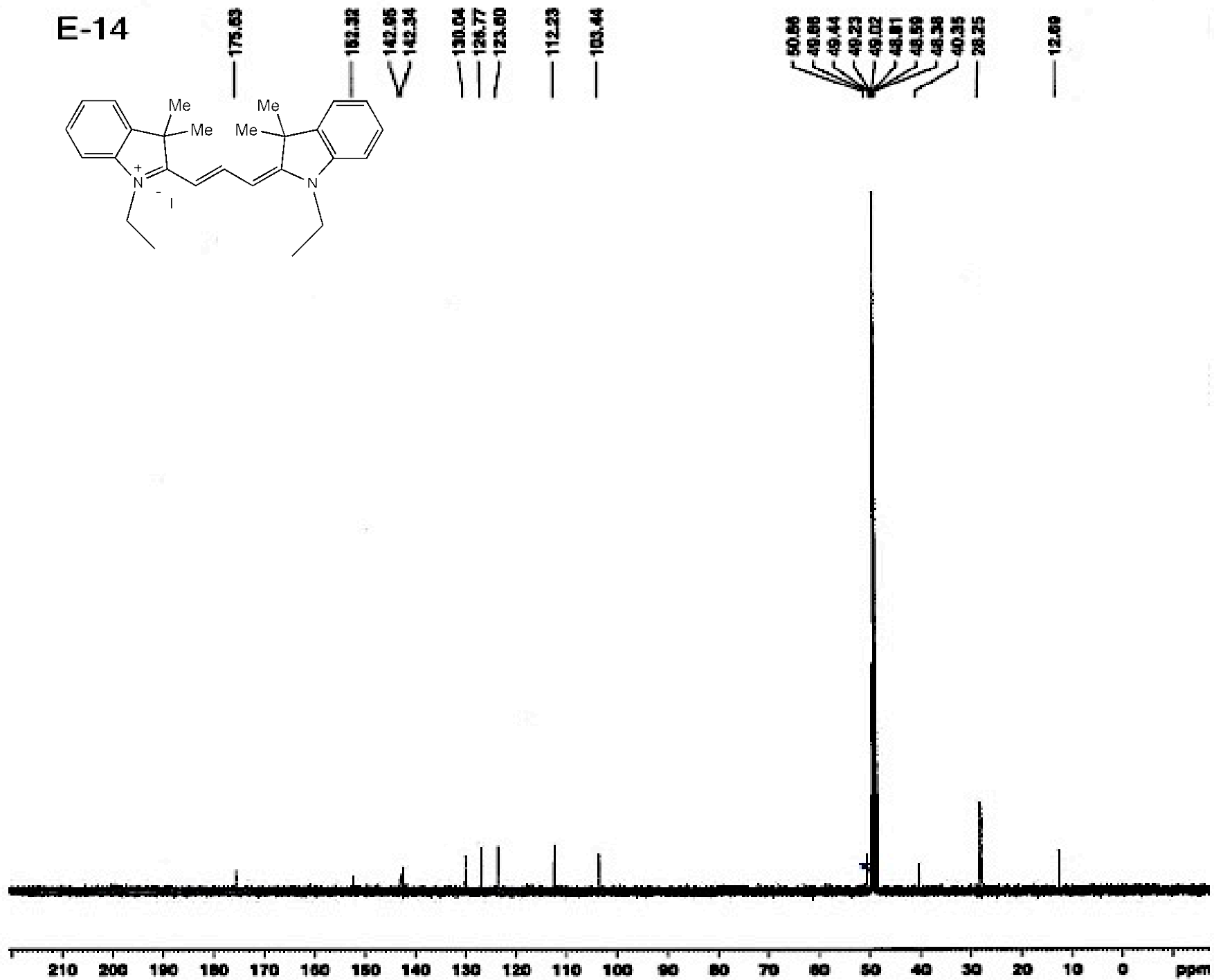
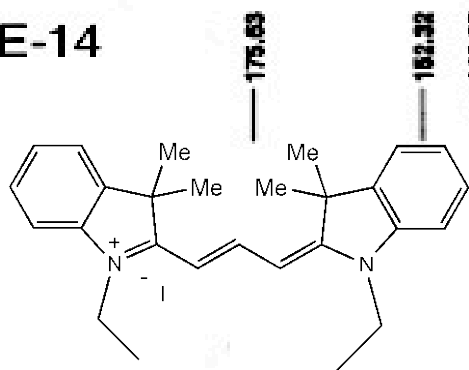
MHI-36



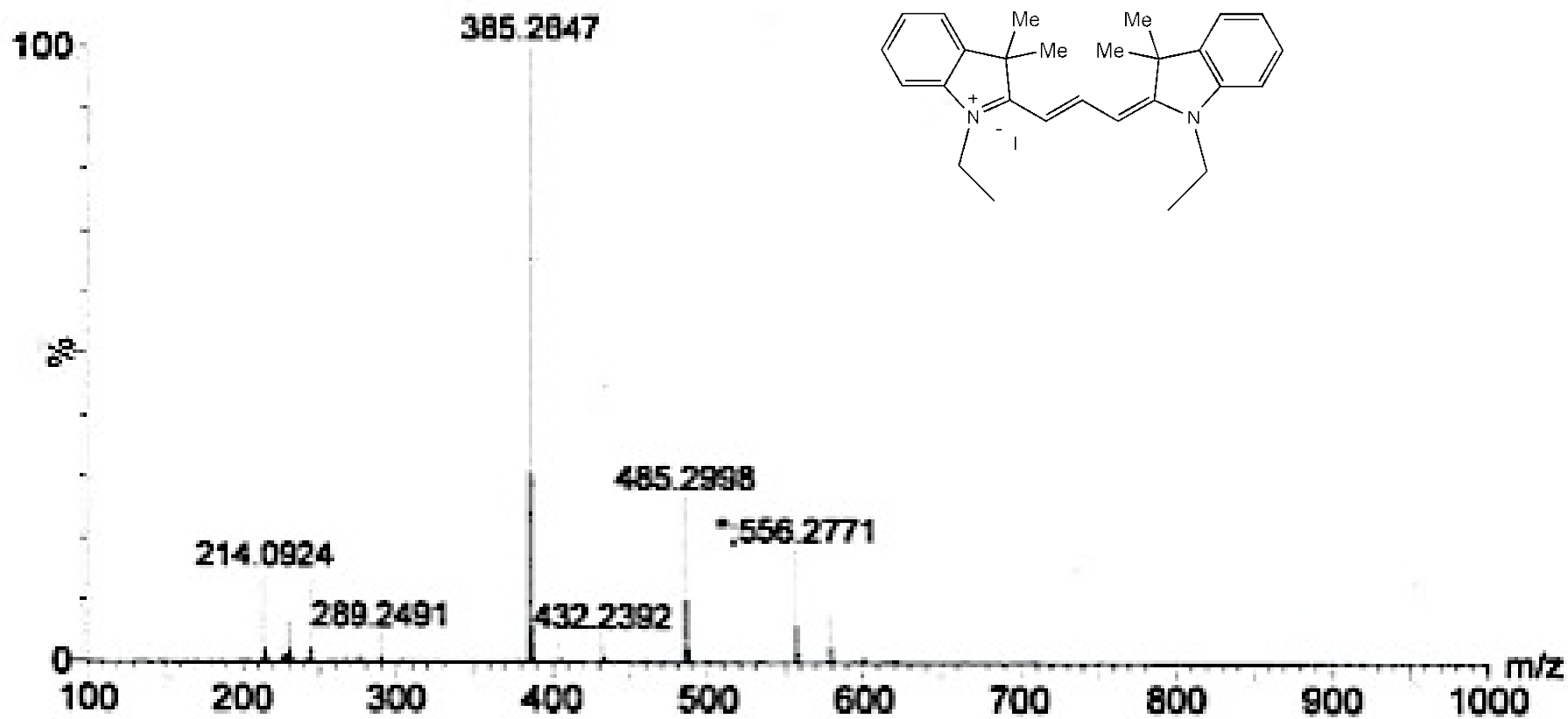
E-14

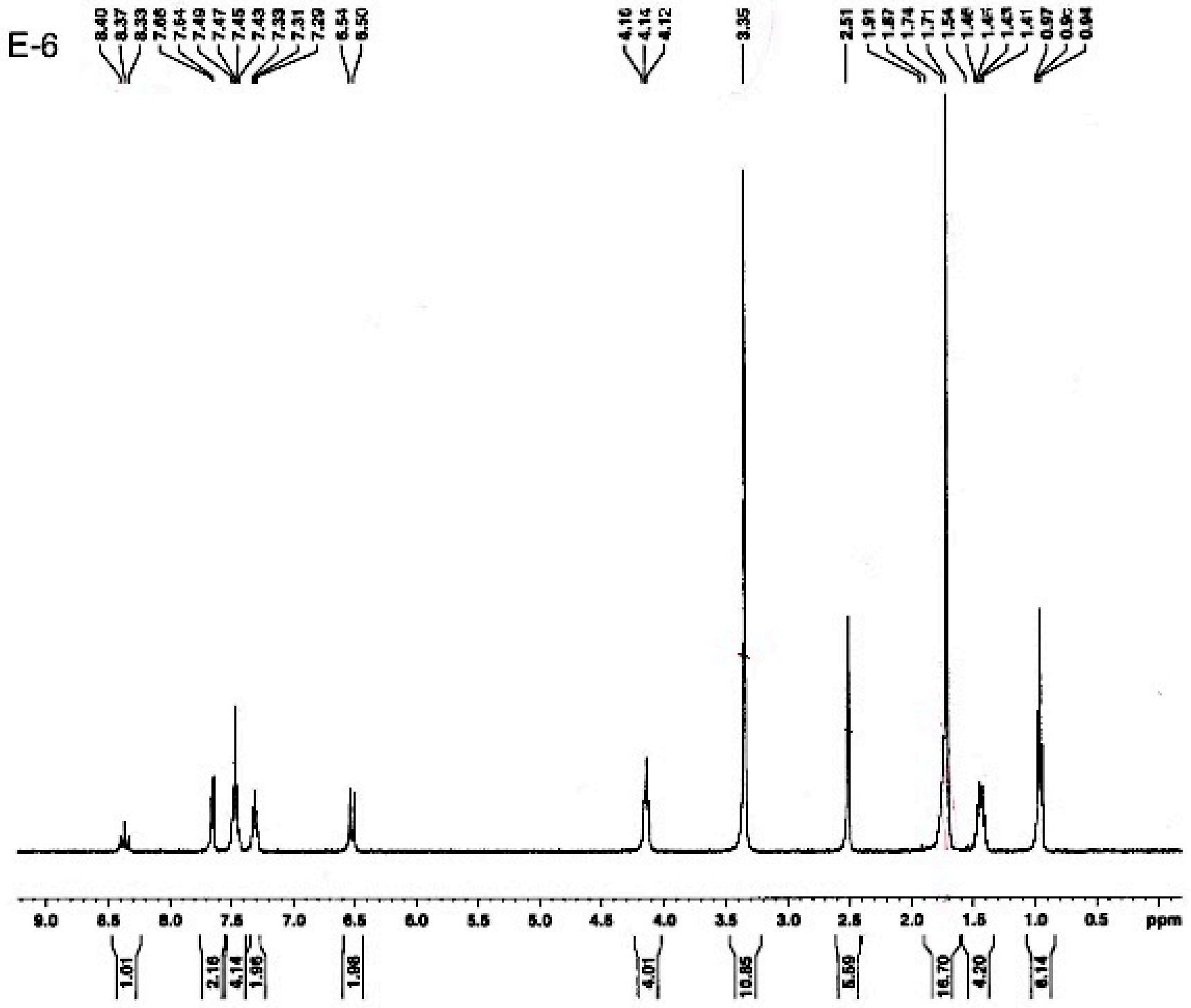


E-14



E-14





E-6

173.84

141.87

140.51

128.64

125.20

122.50

111.56

102.50

48.90

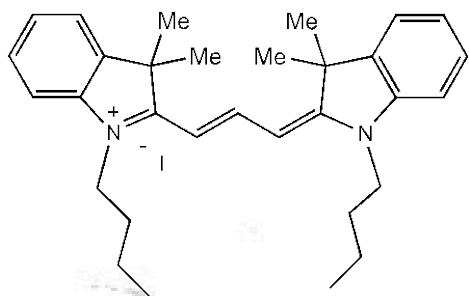
43.70

28.23

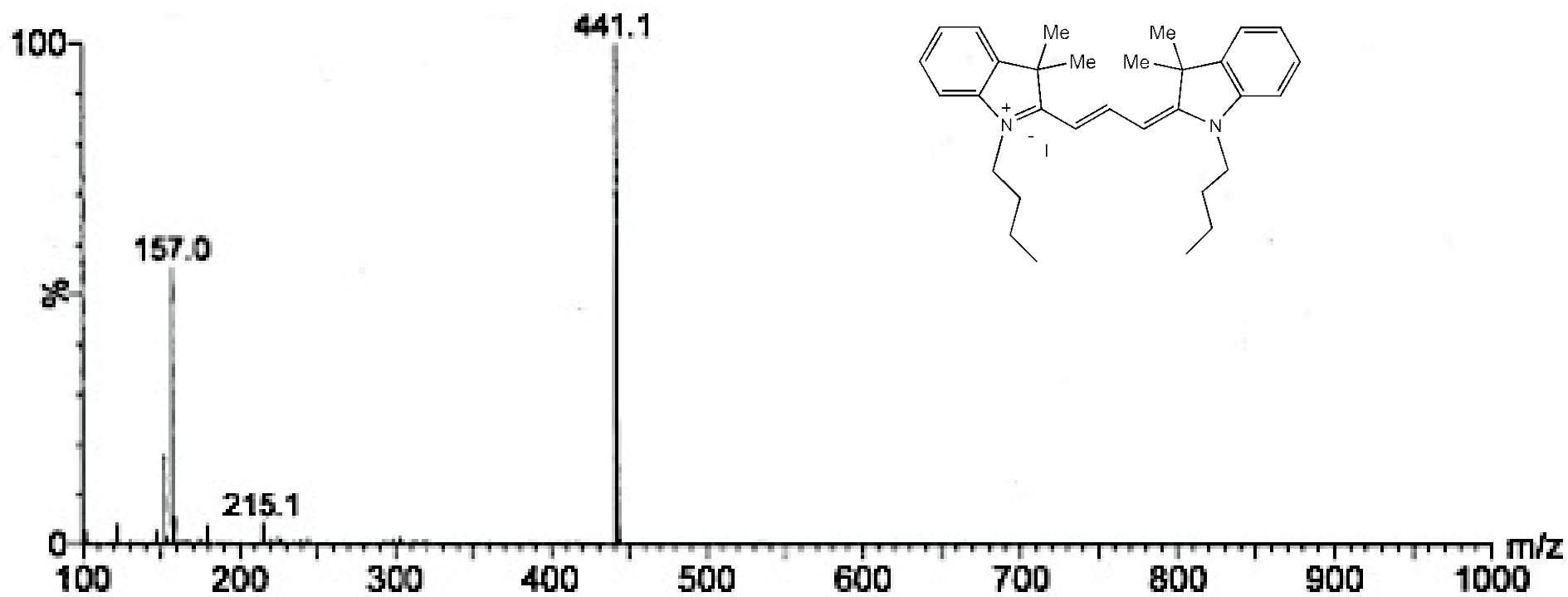
27.46

19.57

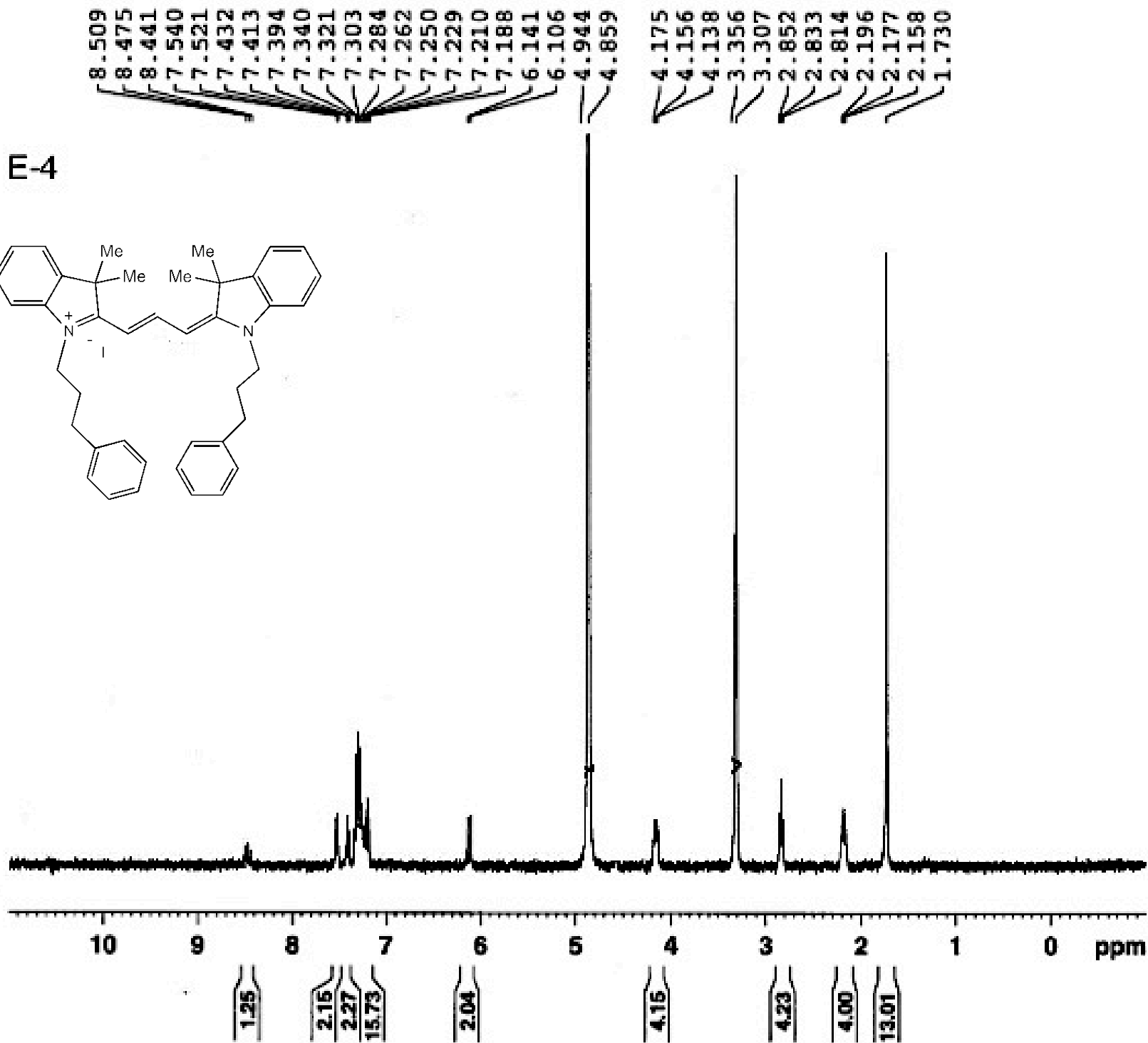
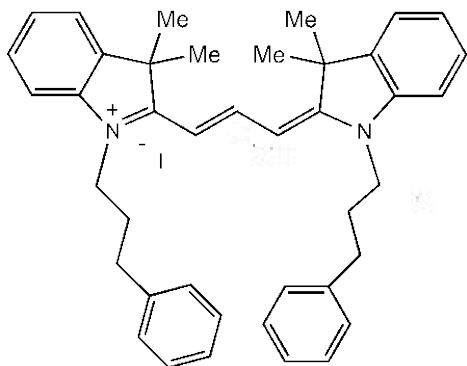
13.81



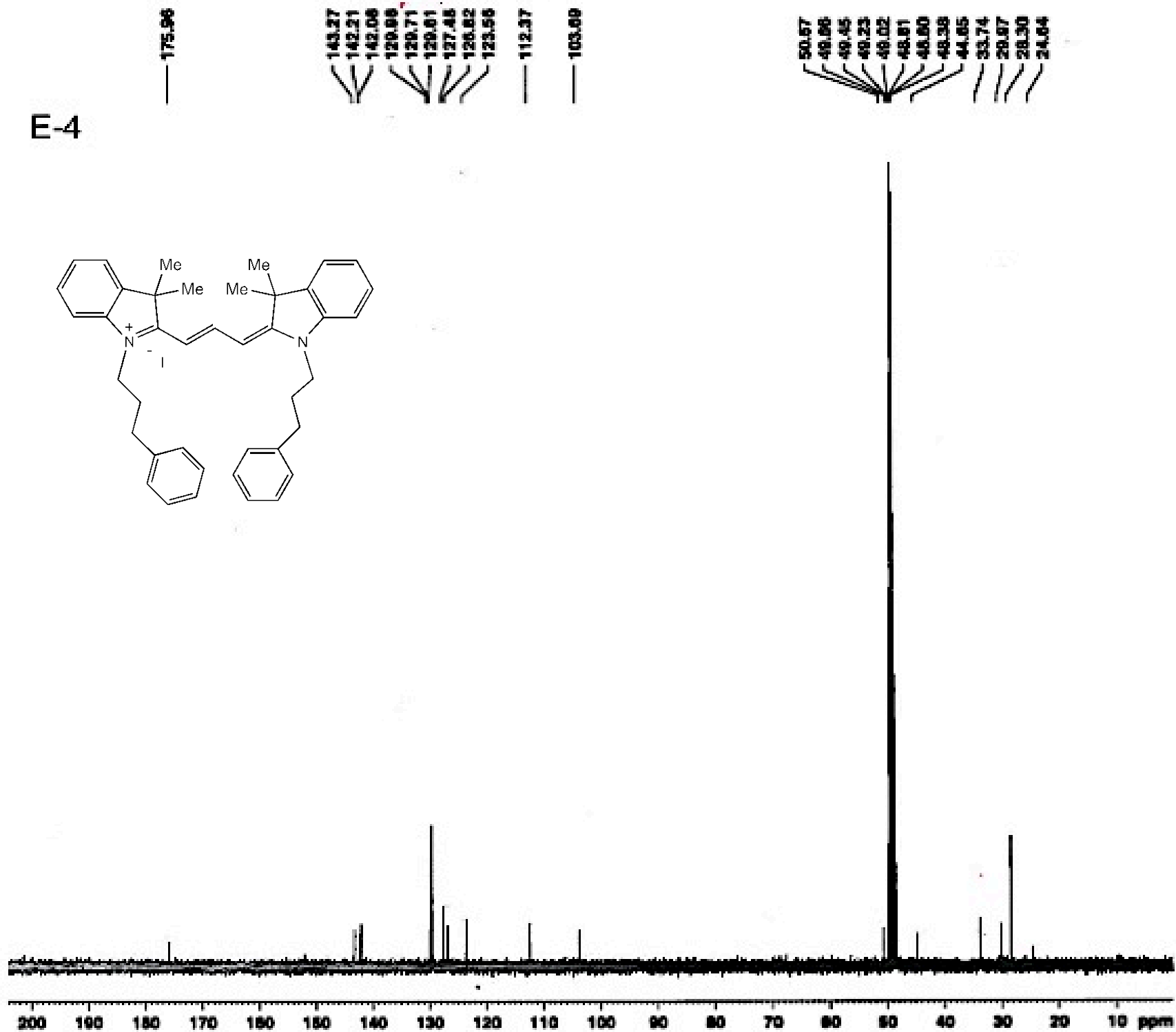
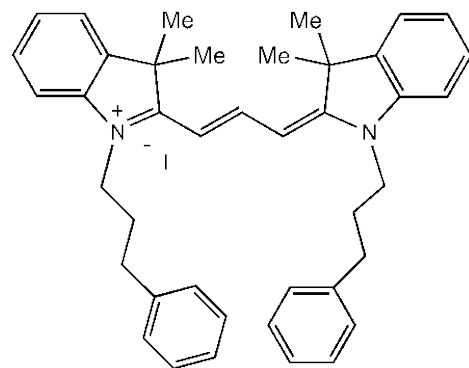
E-6



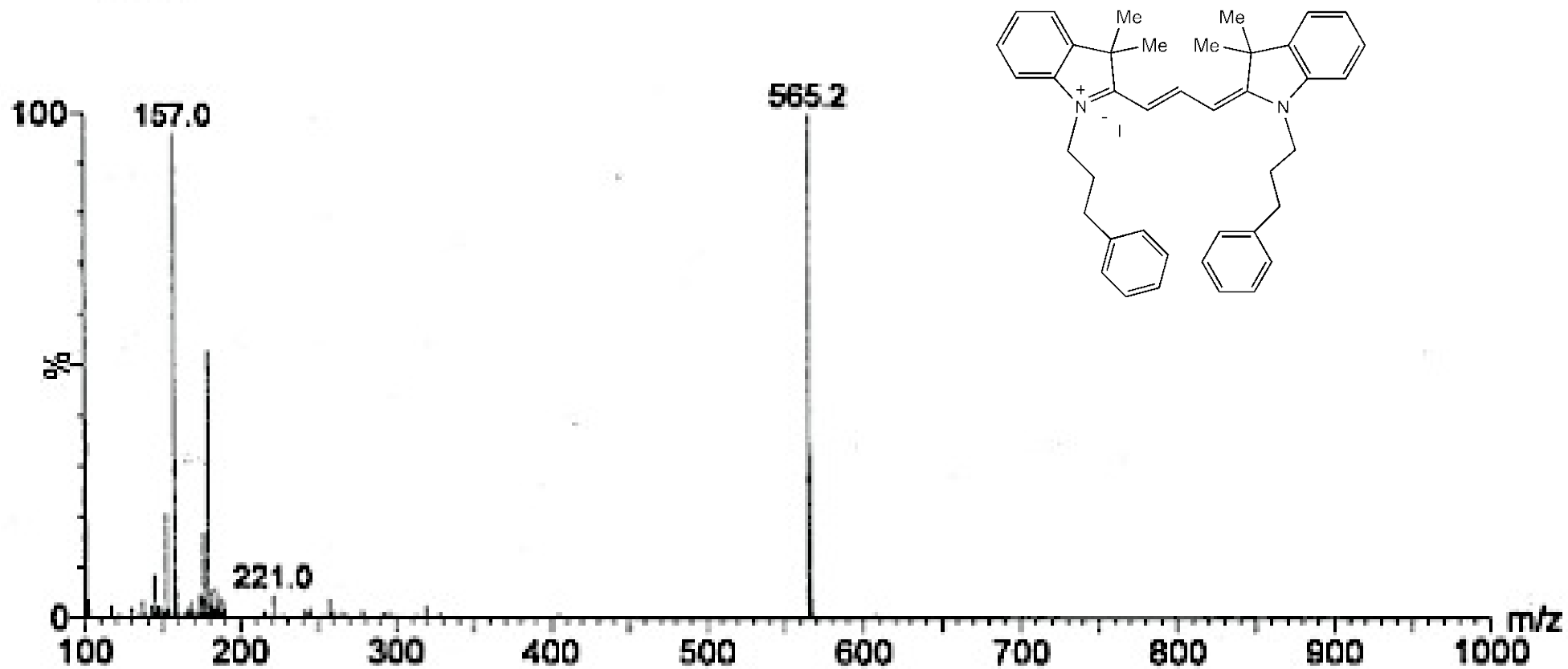
E-4



E-4



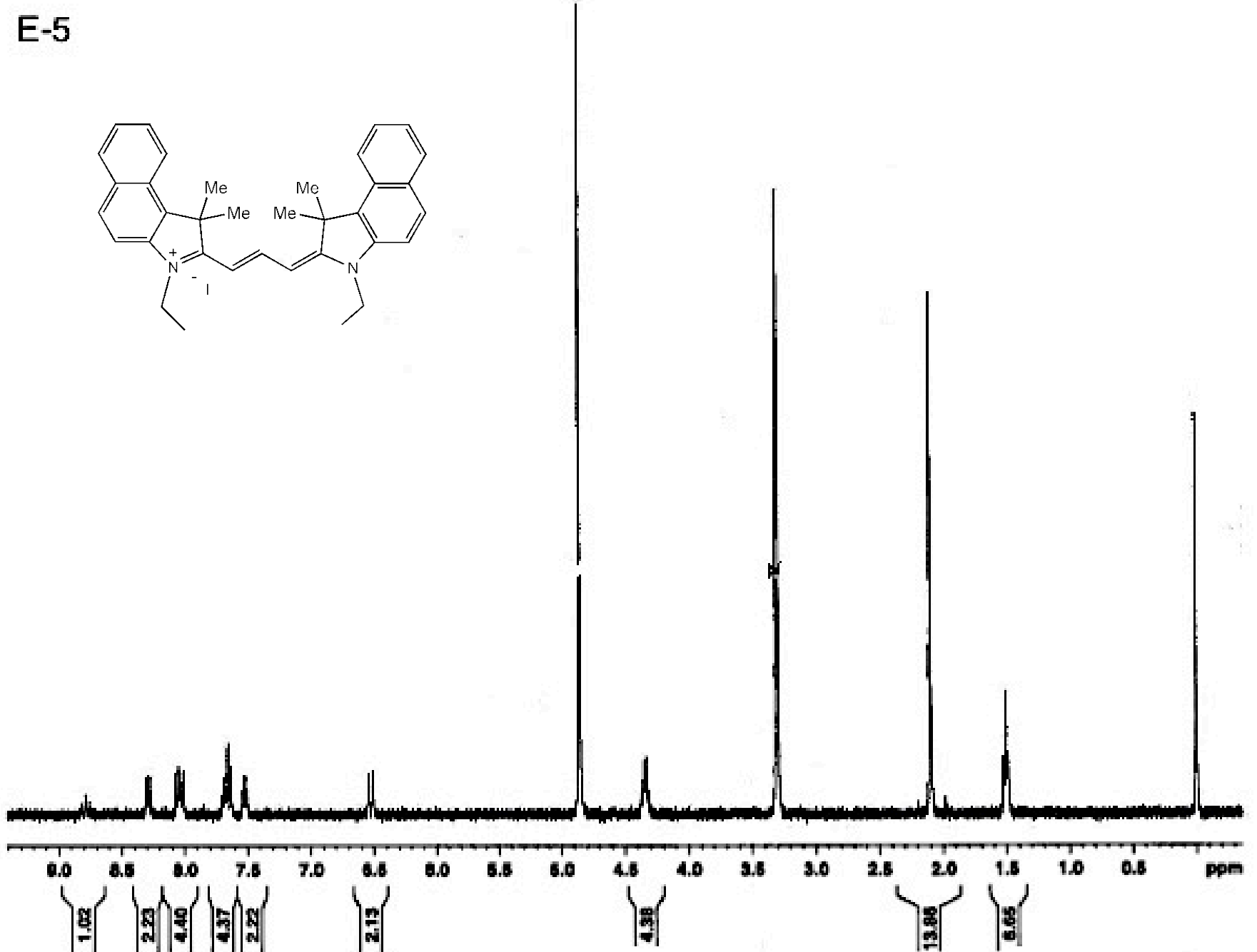
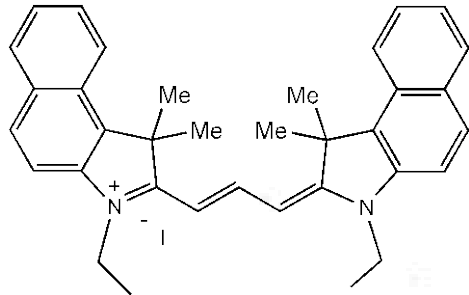
E-4



8.79
 8.79
 8.76
 8.91
 8.28
 8.06
 8.05
 8.04
 8.02
 7.70
 7.68
 7.66
 7.64
 7.54
 7.53
 7.51
 6.55
 6.51

4.86
 4.35
 4.34
 4.32
 3.31
 2.10
 1.82
 1.50
 1.48
 -0.00

E-5



177.13

140.59

133.82

132.16

131.34

129.55

129.07

126.49

123.49

112.14

102.96

52.59

49.79

49.56

49.39

49.15

48.04

48.72

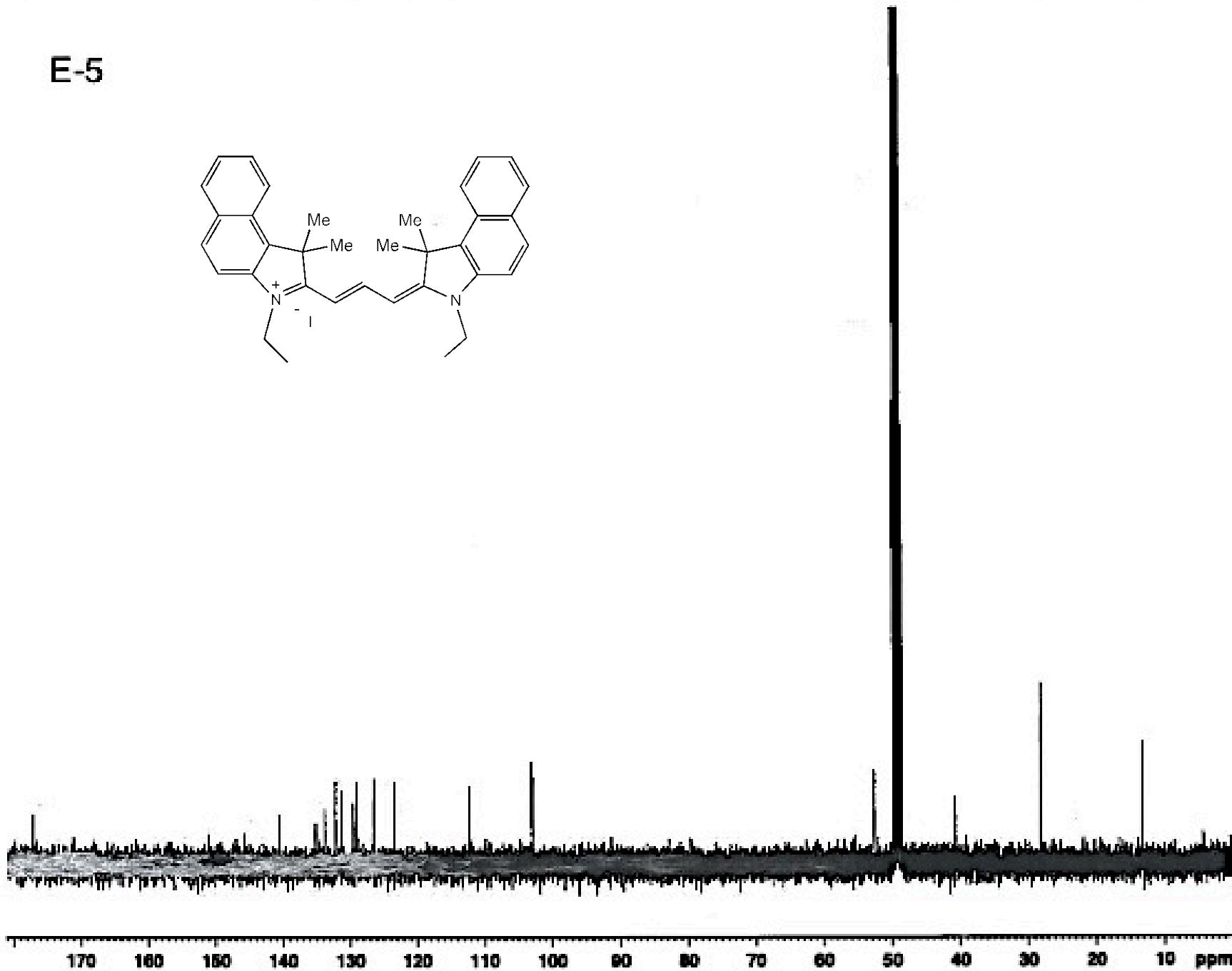
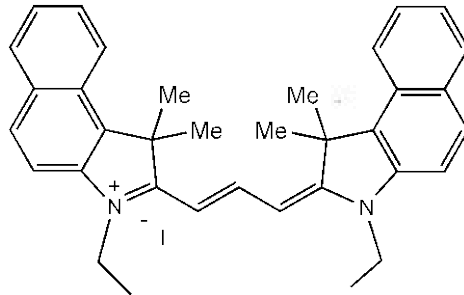
48.51

40.66

28.07

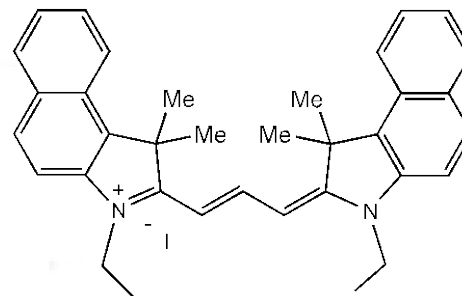
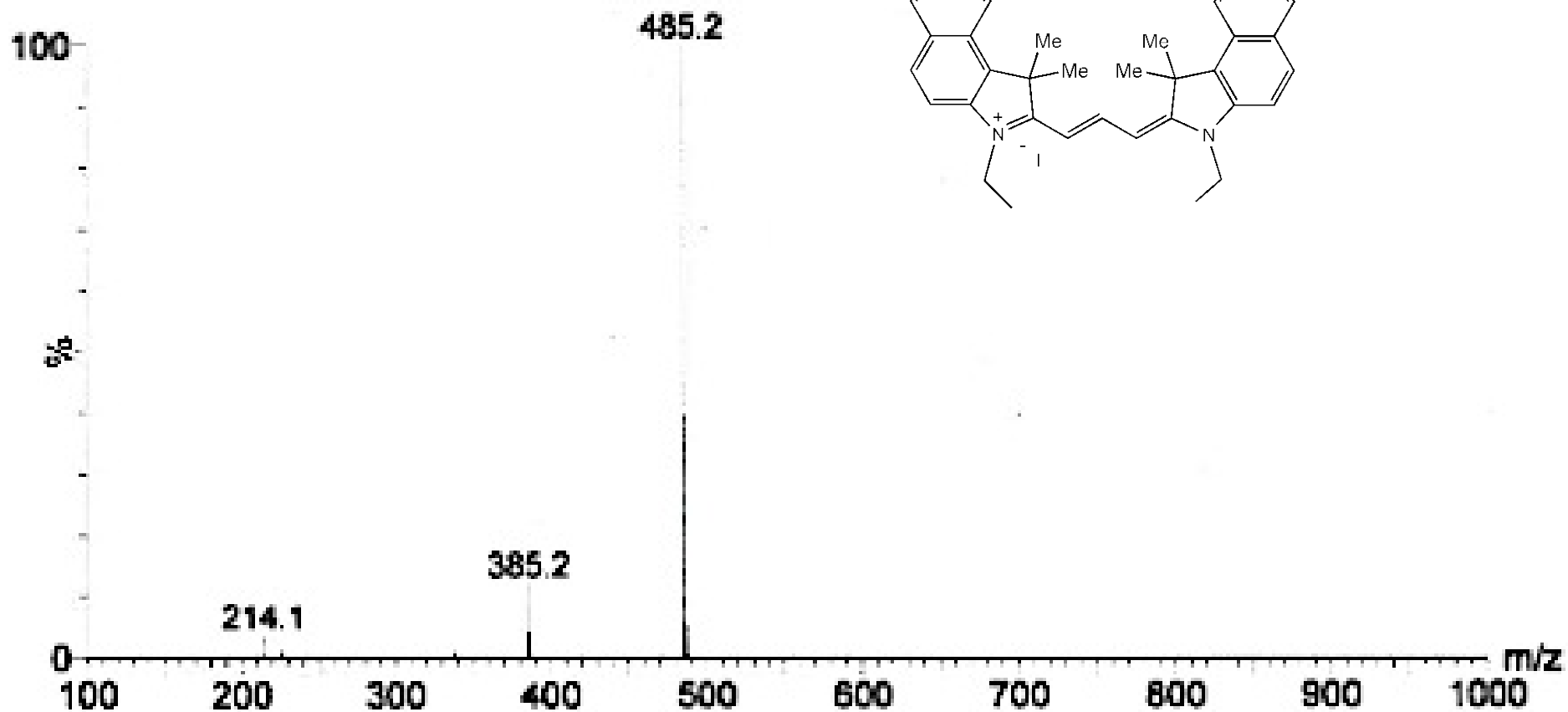
13.13

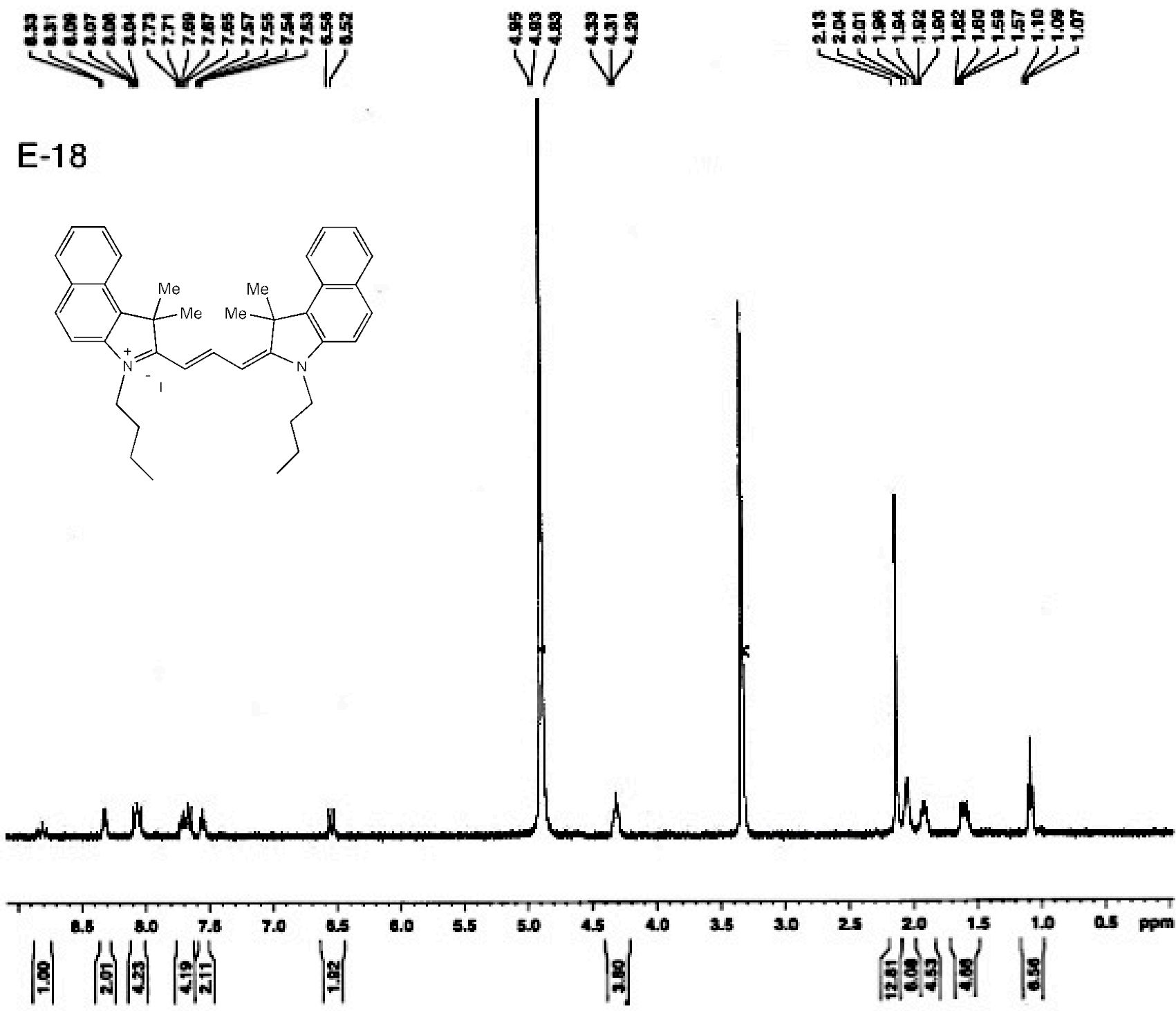
E-5



170 160 150 140 130 120 110 100 90 80 70 60 50 40 30 20 10 ppm

E-5





141.02
135.10
133.80
132.10
131.34
129.48
129.09
126.52
123.50

113.37

103.27

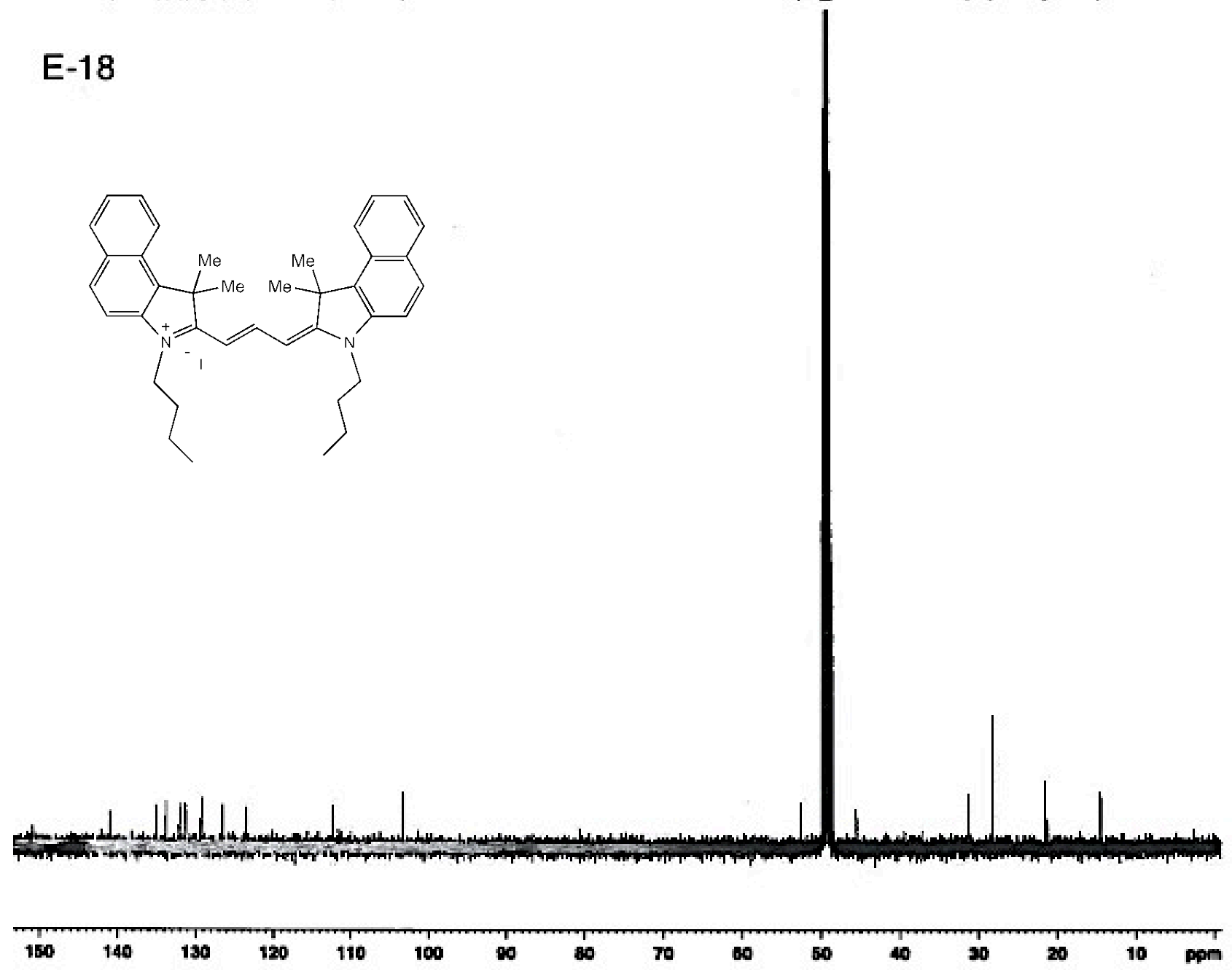
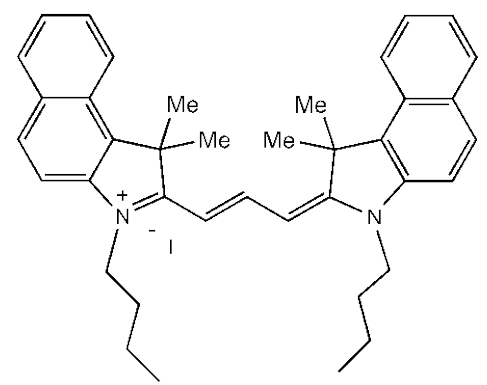
52.56
49.79
49.58
49.36
49.15
48.94
48.72
48.51

31.13
28.18

21.38
21.11

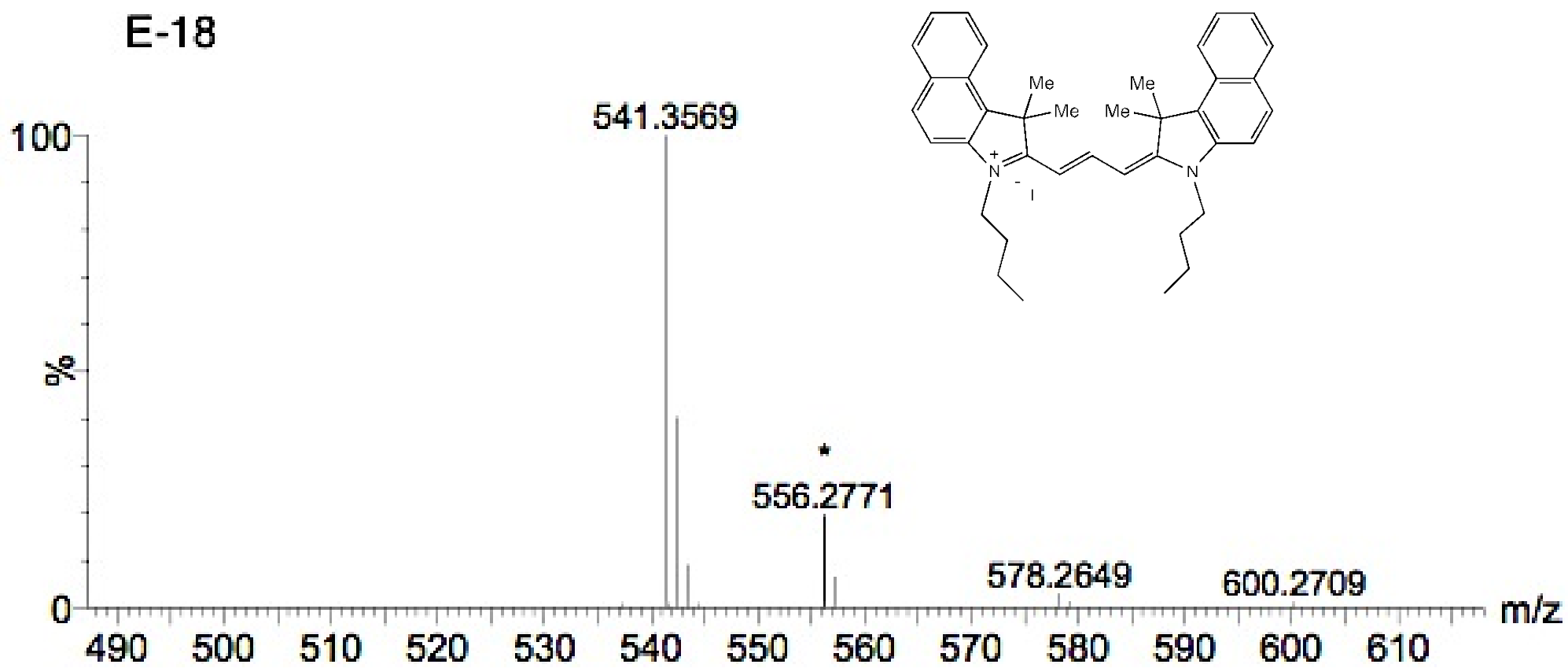
14.41

E-18



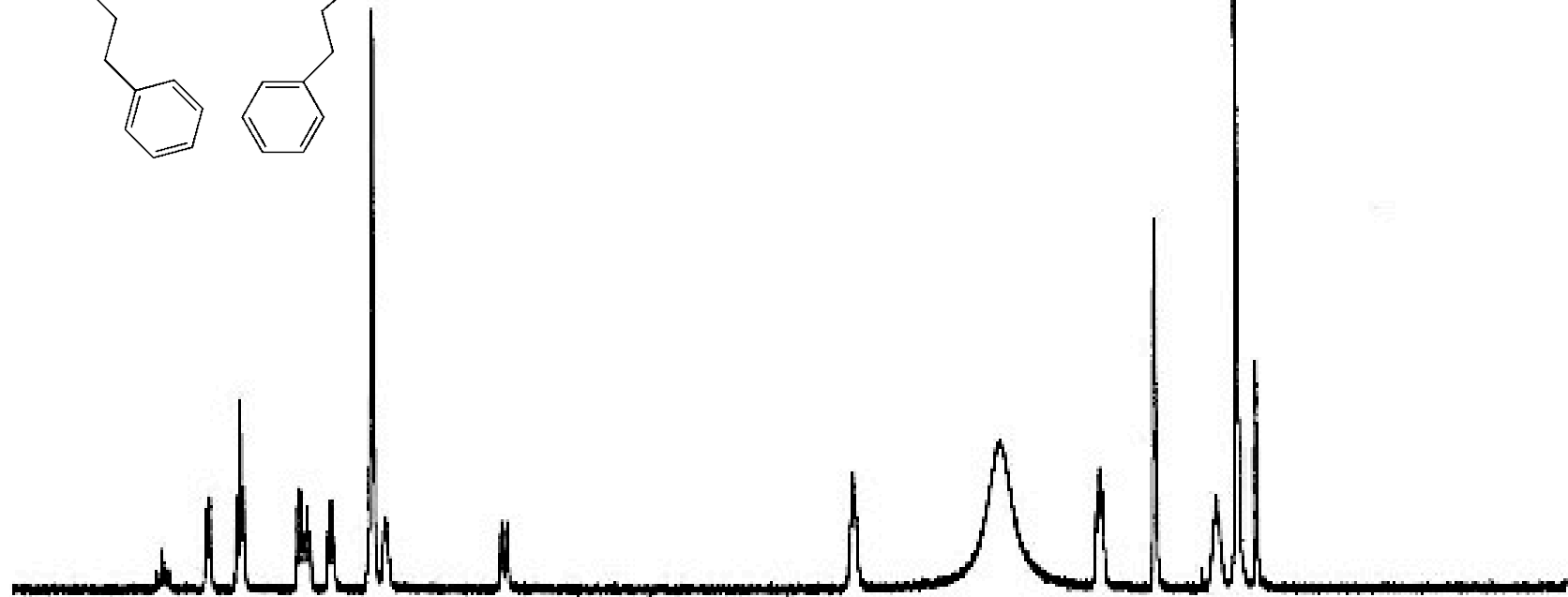
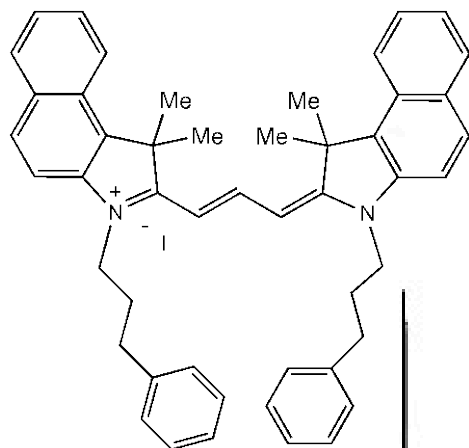
150 140 130 120 110 100 90 80 70 60 50 40 30 20 10 ppm

E-18



8.62 8.58 8.55 8.51 8.29 8.13 8.11 8.09 7.76 7.74 7.72 7.70 7.68 7.57 7.55 7.53 7.33 7.31 7.29 7.25 7.24 7.23 7.21 6.51 6.47 4.35 4.33 3.82 3.82 3.73 3.71 3.68 3.62 3.58 3.53 3.48 3.48 3.41 3.36 3.29 3.27 3.25 3.24 3.21 3.20 3.18 3.17 3.16 2.86 2.84 2.82 2.81 2.22 2.18 2.14 2.01 1.96 1.89

11-8



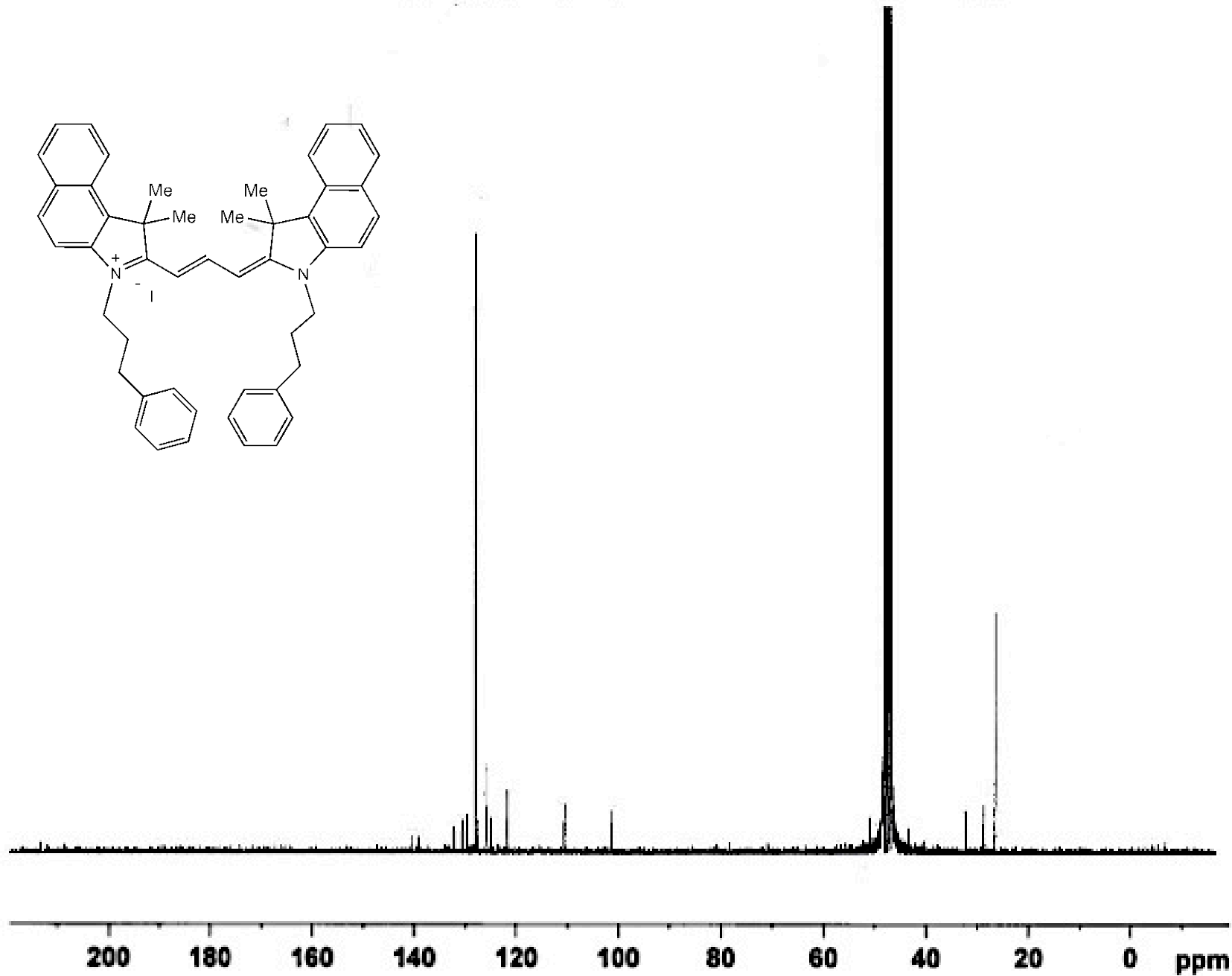
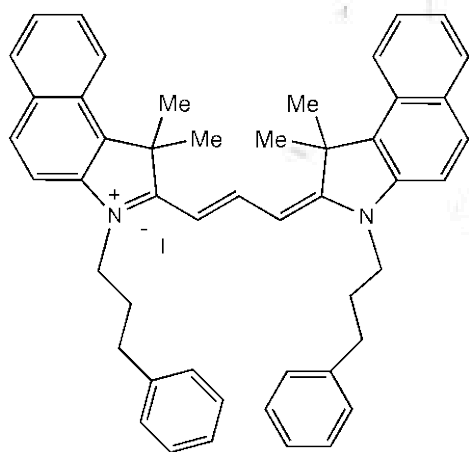
9.0 8.5 8.0 7.5 7.0 6.5 6.0 5.5 5.0 4.5 4.0 3.5 3.0 2.5 2.0 1.5 1.0 0.5 ppm

1.00 2.18 4.48 4.41 2.20 8.86 2.64 2.16 4.33 90.52 4.85 6.52 4.46 13.37 2.69

E-8

140.62
139.23
132.27
130.55
129.75
128.34
126.21
126.07
121.59
121.50
121.59
126.06
125.01
121.02
110.65
101.59

32.32
28.75
26.60



E-8

