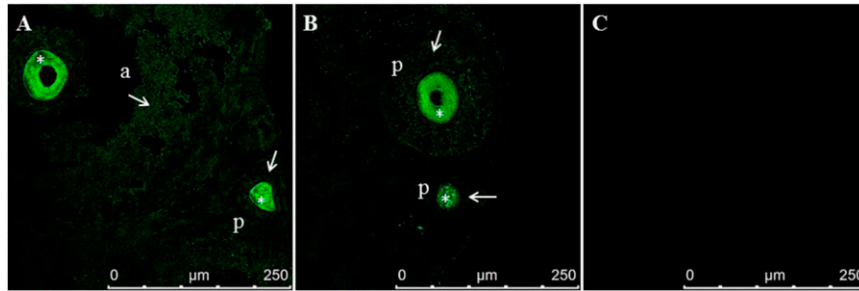


# Supporting Information

Uri-Belapolsky et al. 10.1073/pnas.1323955111



**Fig. S1.** B-cell lymphoma 2-associated X protein (Bax) is expressed in granulosa cells (GCs) and oocytes. (A and B) Paraffin-embedded sections of ovaries from 2.5-mo-old WT mice were stained with anti-Bax antibody (green). Bax is detected in the cytoplasm of GCs (arrows) and oocytes (asterisks) of antral (a) and preantral (p) follicles. (C) Negative control using secondary antibody alone is shown in micrographs. (Scale bars: 250  $\mu\text{m}$ .)

**Table S1. Specific primers used (all mouse)**

Primers	Sequence (5'-3')
<b>Primers for PCR</b>	
IL-1 $\alpha$	
Forward	TTGGTTGAGGGAATCATT CAT
Reverse	TCCATAACCCATGATCTGGAA
IL-1 $\beta$	
Forward	GTGGCAGCTACCTGTGTCT
Reverse	GAGCCTGTAGTGCAGTTGTCT
IL-1 receptor type I	
Forward	CTCTGCTGTCTCGTGGAGATT
Reverse	GAAGGTGGCCTGTGTGC
GAPDH	
Forward	GTGAAGGTCGGTGTGAACGG
Reverse	GTGATGGCATGGACTGTGGTC
<b>Primers for quantitative PCR</b>	
FSH receptor	
Forward	AGTGTTTAAATGCCTGTGTTGGA
Reverse	ACCCTGAGGCCTTCCAGA
B-cell lymphoma 2 (Bcl-2)-associated X protein	
Forward	GGTCCCGAAGTAGGAGAGGA
Reverse	GAACCATCATGGGCTGGA
Bcl-2	
Forward	GCTGAGCAGGGTCTTCAGAG
Reverse	GTACCTGAACCGGCATCTG
IL-6	
Forward	AGCCAGAGTCCTTCAGAG
Reverse	CCACTCCTTCTGTGACTC
IL-10	
Forward	GTTGTCCAGCTGGTCCTTTG
Reverse	CAGCCGGGAAGACAATAACT
TNF- $\alpha$	
Forward	GAGGCCATTTGGGAATTCT
Reverse	TGCCTATGTCTCAGCCTCTTC
IL-1 $\beta$	
Forward	TCTTCTTTGGGTATTGCTTGG
Reverse	TGTAATGAAAGACGGCACACC
Hypoxanthine phosphoribosyltransferase 1	
Forward	CTGGTTCATCATCGCTAATCAC
Reverse	GGAGCGGTAGCACCTCCT
GAPDH	
Forward	GTGAAGGTCGGTGTGAACGG
Reverse	GTGATGGCATGGACTGTGGTC