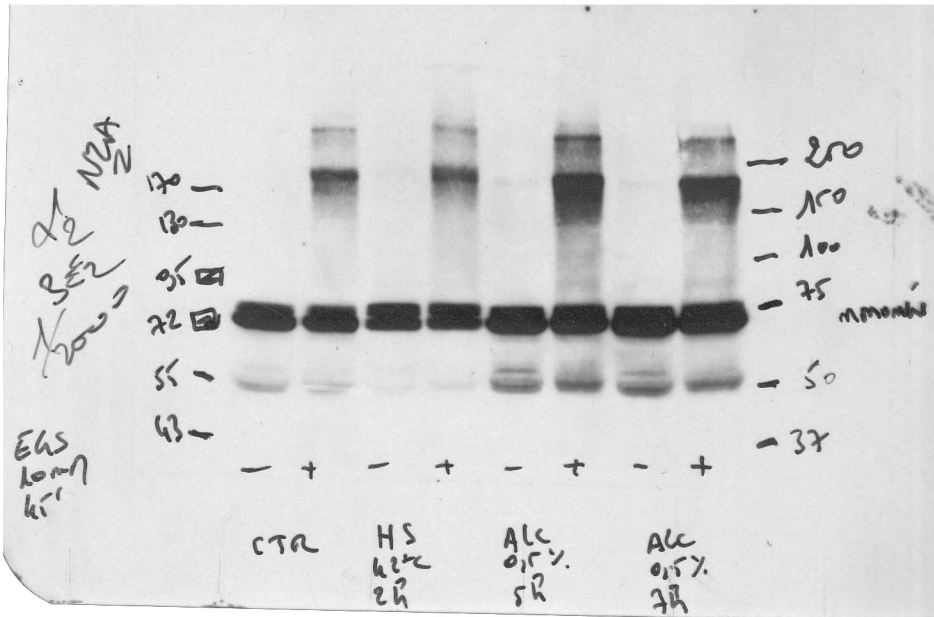
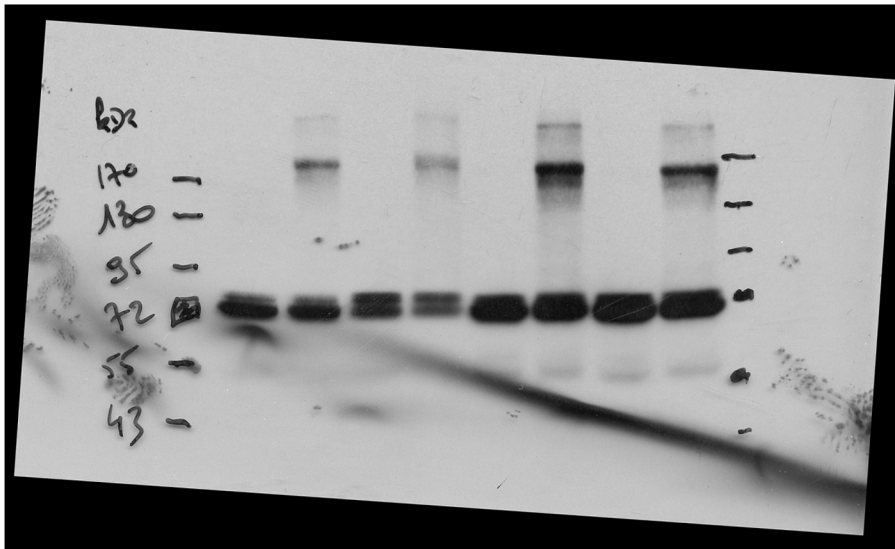


Source data Suppl. Figure S9 A El Fatimy

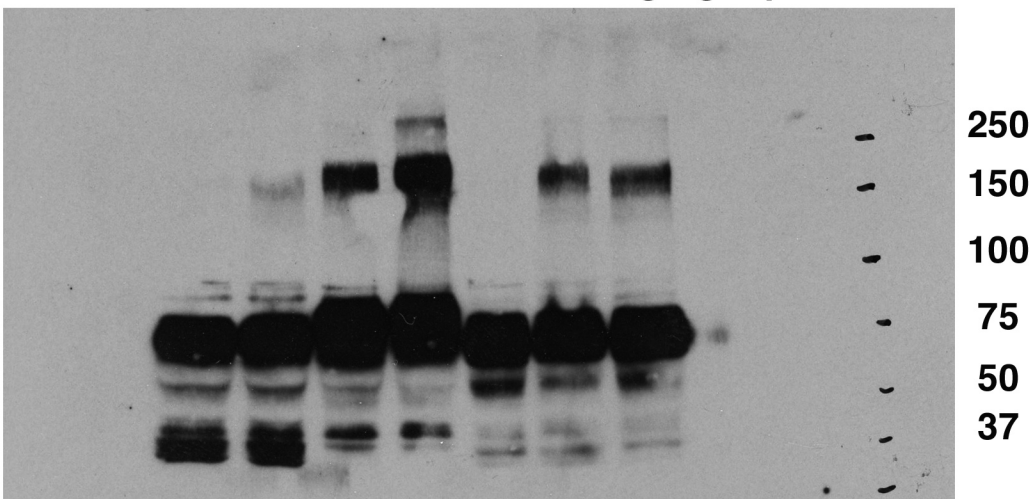
Raw data WB HSF2 EGS crosslinking left-upper panel



Raw data WB HSF2 EGS crosslinking left-lower panel (shorter exposure)

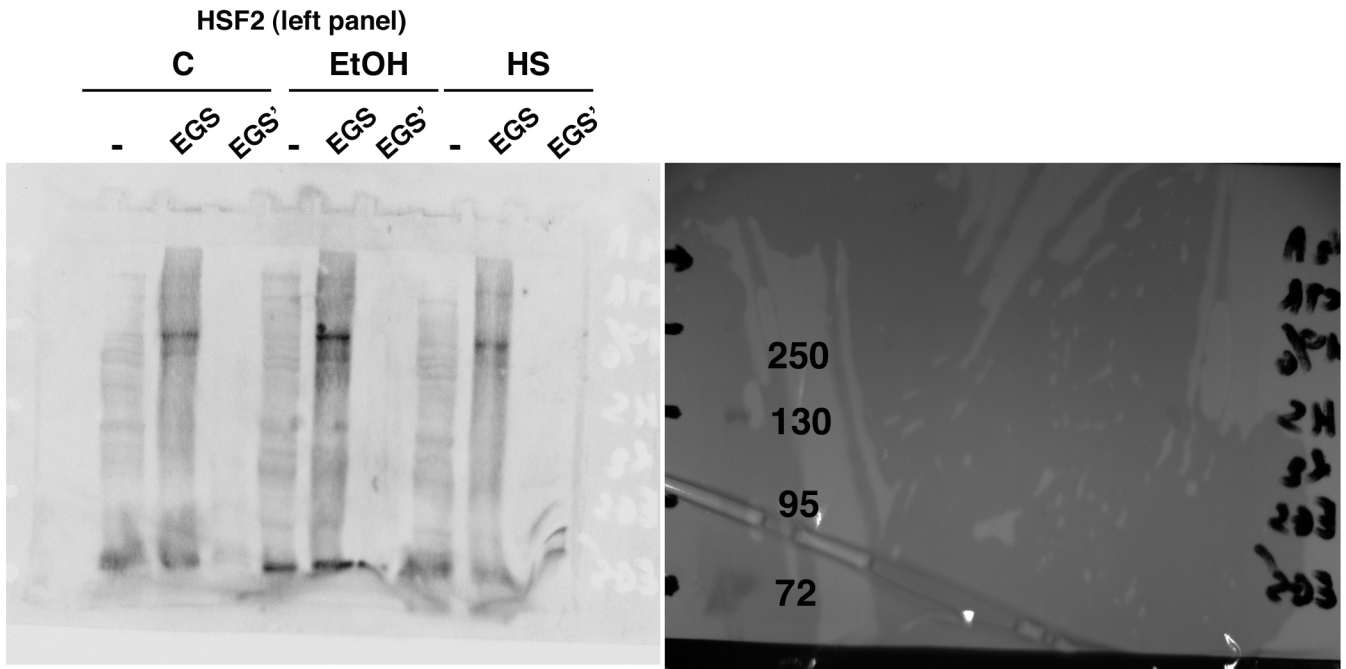


Raw data HSF1 WB EGS crosslinking right panel

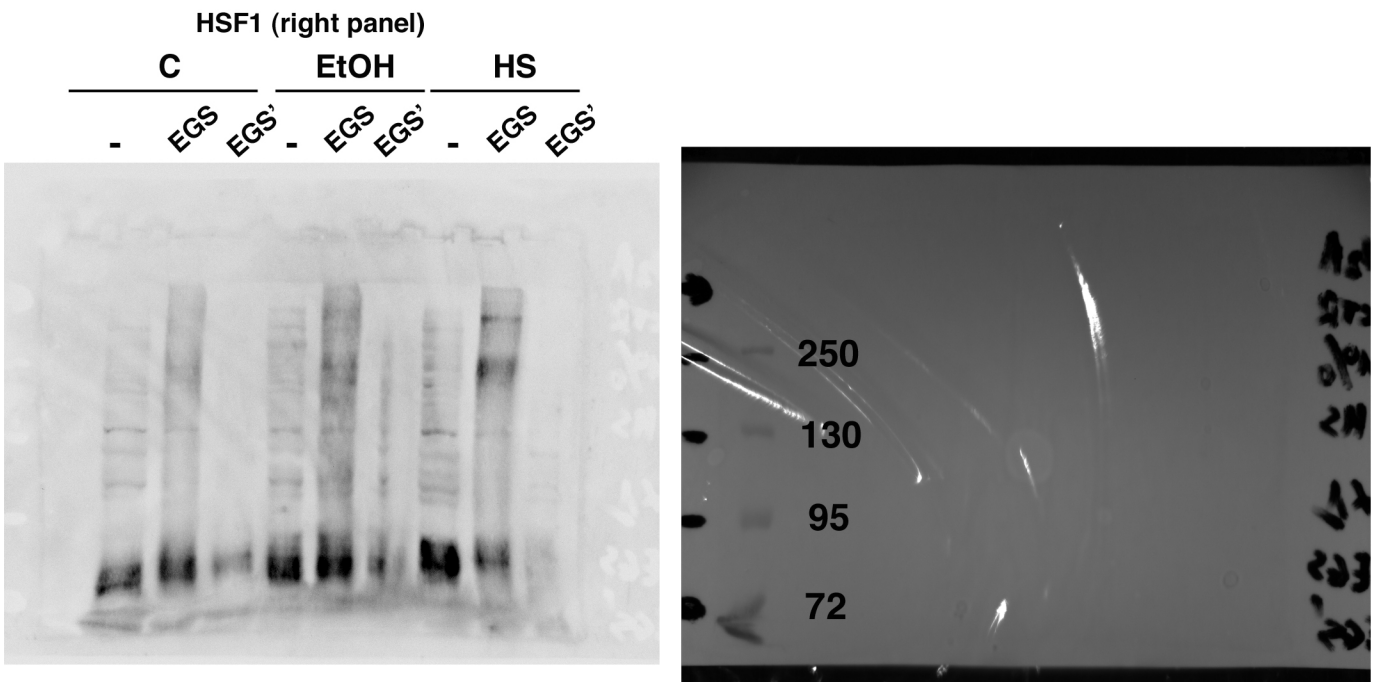


Source data Suppl. Figure S9B El Fatimy

Raw data WB EGS crosslinking S9B



EGS & EGS' = 2 different batches of EGS
from 2 Manufacturers

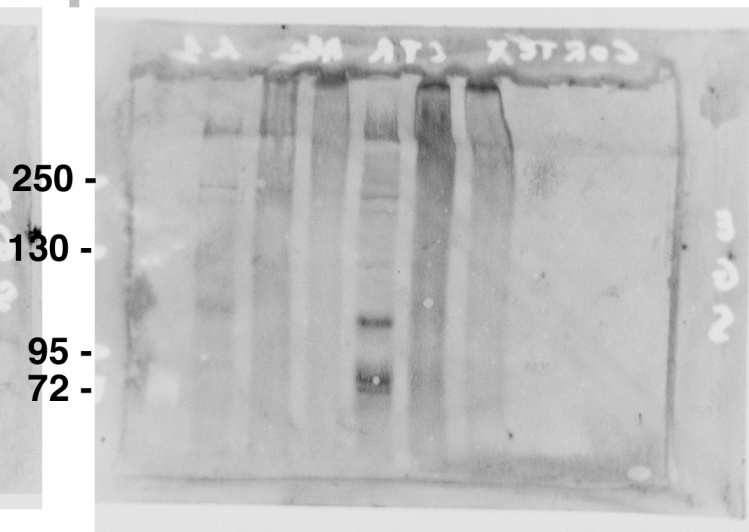
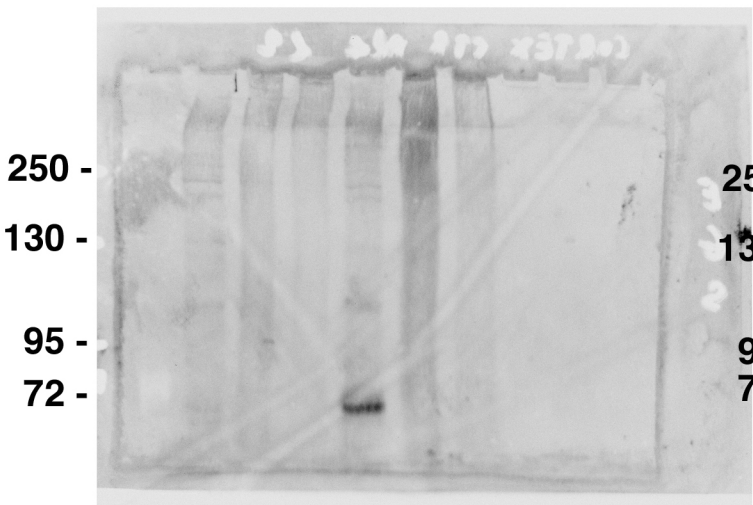
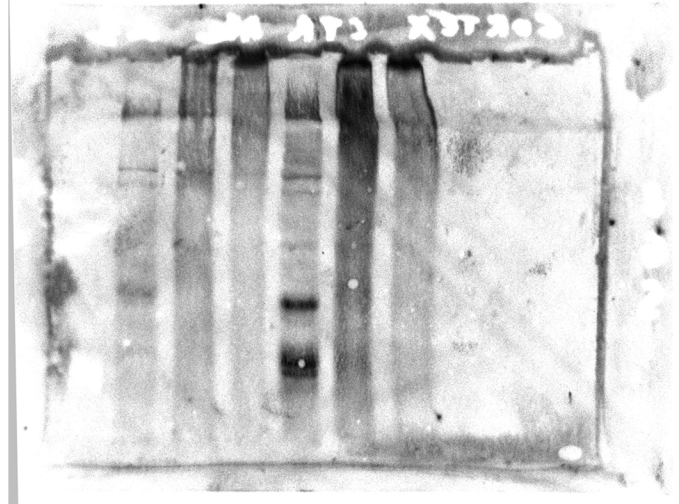
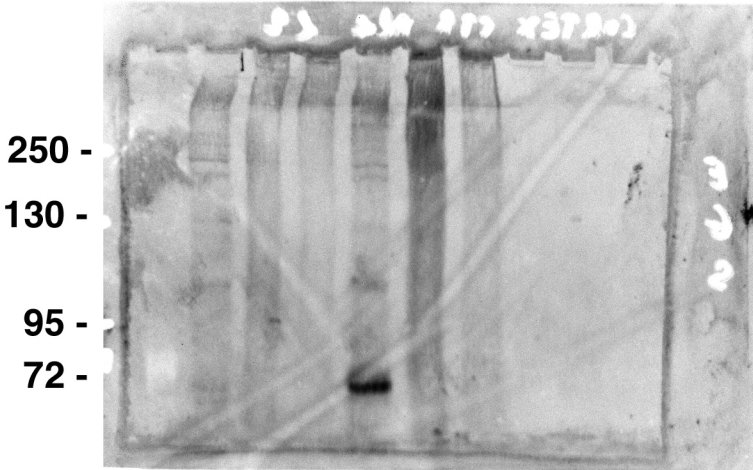


Source data Suppl. Figure S9C El Fatimy

Raw data WB EGS crosslinking S9C

EGS (mM) HSF2 (left panel)
- 10 20 - 10 20

EGS (mM) HSF1 (right panel)
- 10 20 - 10 20



(same membranes - lower exposure)