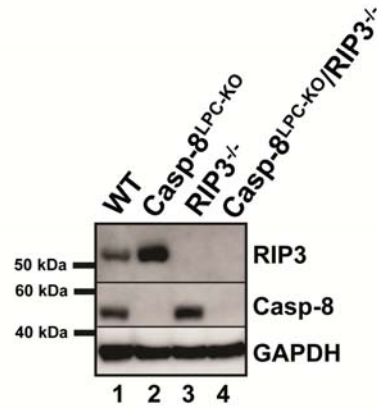


## Supporting Information Fig S1



### Supp Information Fig S1:

Western blot analysis of whole liver-protein extracts from WT, Caspase-8<sup>LPC-KO</sup>, Caspase-8<sup>LPC-KO</sup>/RIP3<sup>-/-</sup> and RIP3<sup>-/-</sup> untreated-mice, using antibodies against Caspase-8, RIP3 and GAPDH as loading control.