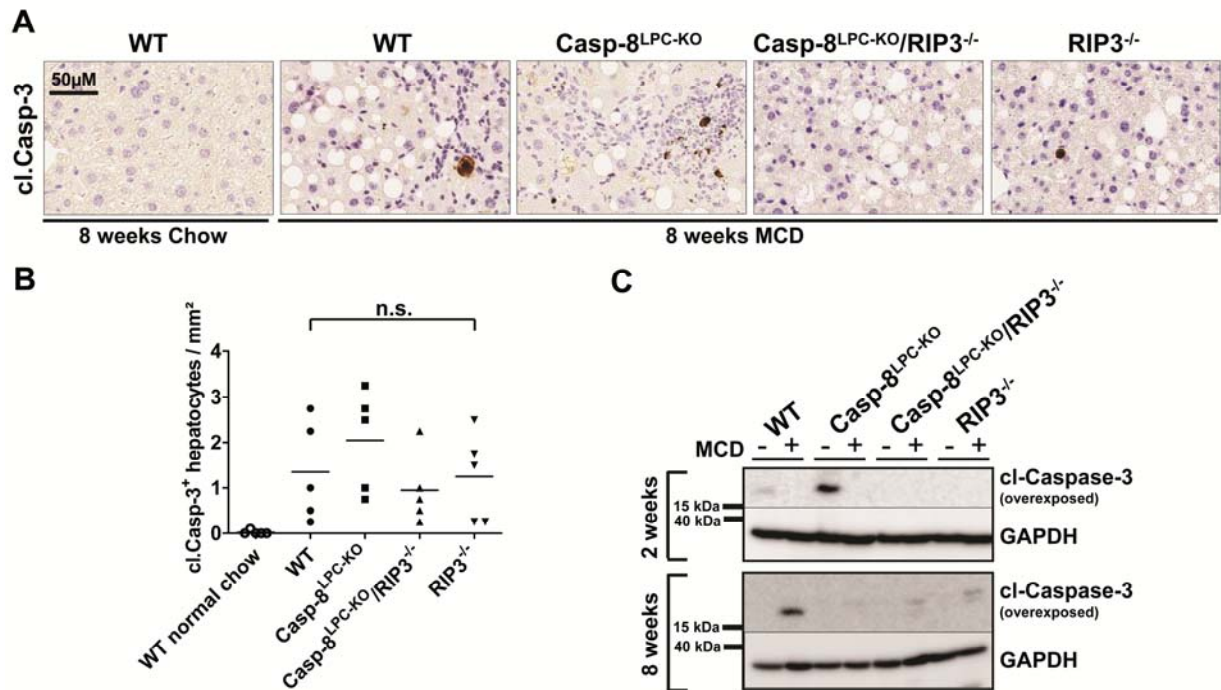


## Supporting Information Fig S2



### Supporting Information Fig S2: analysis of apoptosis upon MCD-diet feeding.

(A) Immunohistochemical analysis of cleaved Caspase-3 on representative liver sections from the indicated mice fed for 8-weeks with MCD-diet or normal chow.

(B) Statistical analysis of cleaved Caspase-3<sup>+</sup> hepatocytes. Results are shown as mean, n=5.

(C) Western blot analysis of whole liver-protein extracts from WT, Caspase-8<sup>LPC-KO</sup>, Caspase-8<sup>LPC-KO</sup>/RIP3<sup>-/-</sup>, RIP3<sup>-/-</sup> and untreated-mice, using antibodies against cleaved Caspase-3 and GAPDH as loading control.