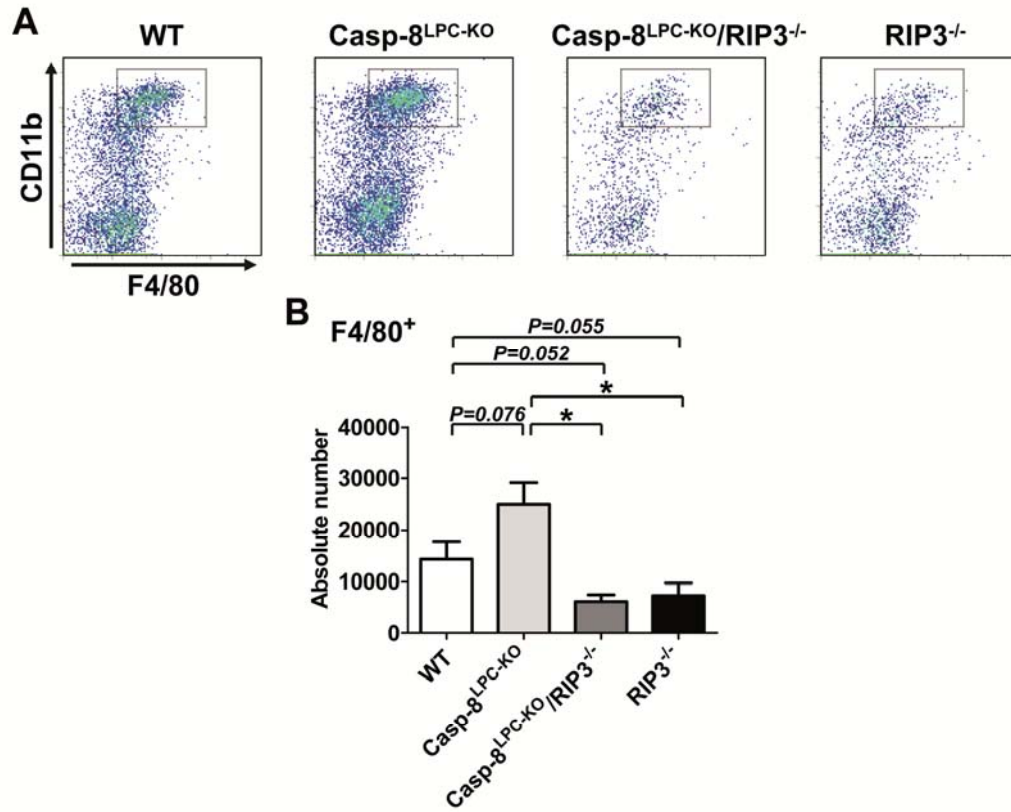


Supporting Information Fig S5



Supporting Information Fig S5: RIP3 promotes the hepatic recruitment of F4/80⁺ cells.

(A) Representative FACS plots for myelo-monocytic cells (F4/80⁺) from individual mice of the indicated genotypes after two weeks of MCD-diet feeding.

(B) Statistical analysis of FACS data for intrahepatic levels of myelo-monocytic cells in the indicated mouse groups after two weeks of MCD-diet feeding. Results are shown as mean, error bars indicate SEM, n=5.