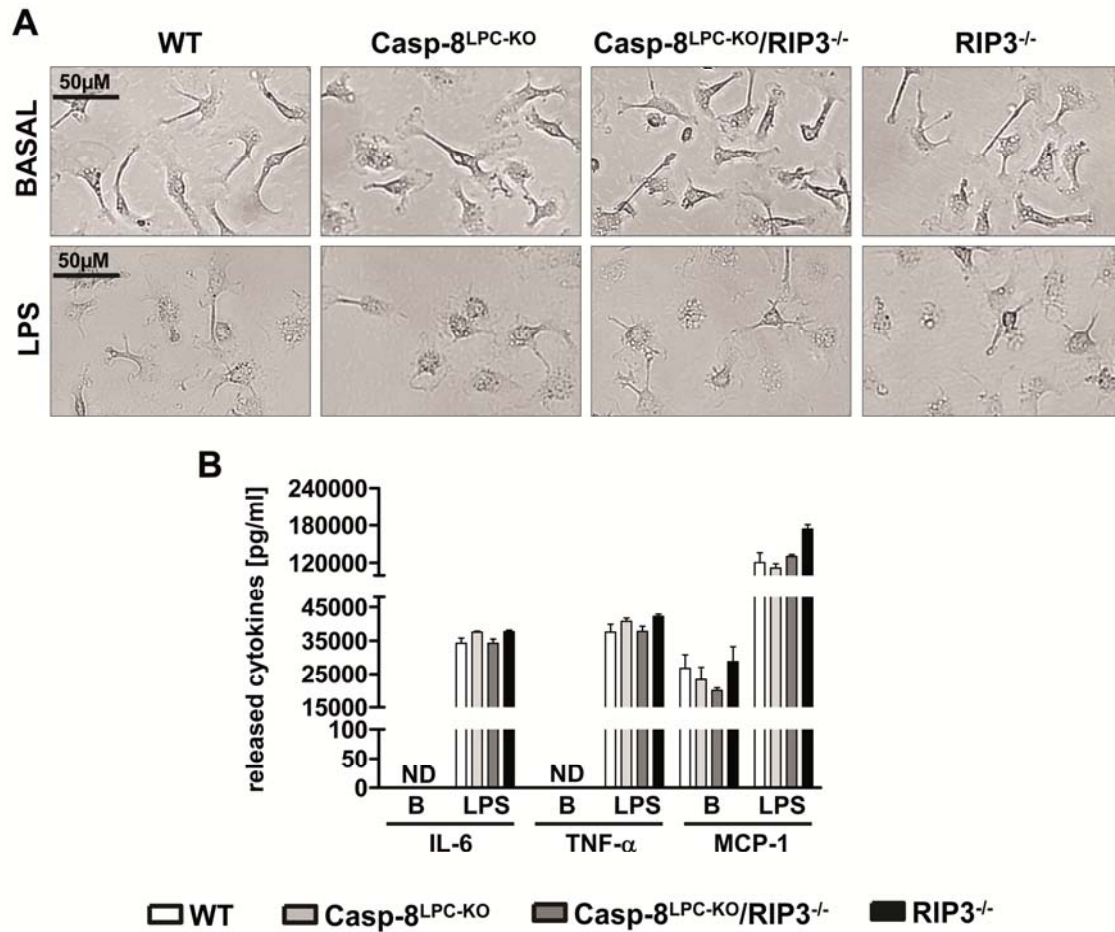


## Supporting Information Fig S8



**Supporting Information Fig S8: RIP3 deletion in monocytic cells does not lead to impaired immune responses compared to WT mice.**

(A) Morphological aspects of macrophages of the different groups of mice at basal level and after LPS stimulation.

(B) FACS-based micro-beads fluorescence assay for IL-6, TNF- $\alpha$  and MCP-1 expression in liver protein homogenates. Four 10cm plates of WT, Casp-8<sup>LPC-KO</sup>, Casp-8<sup>LPC-KO</sup>/RIP3<sup>-/-</sup> and RIP3<sup>-/-</sup> macrophages were used for LPS stimulation. Error bars indicate SEM.