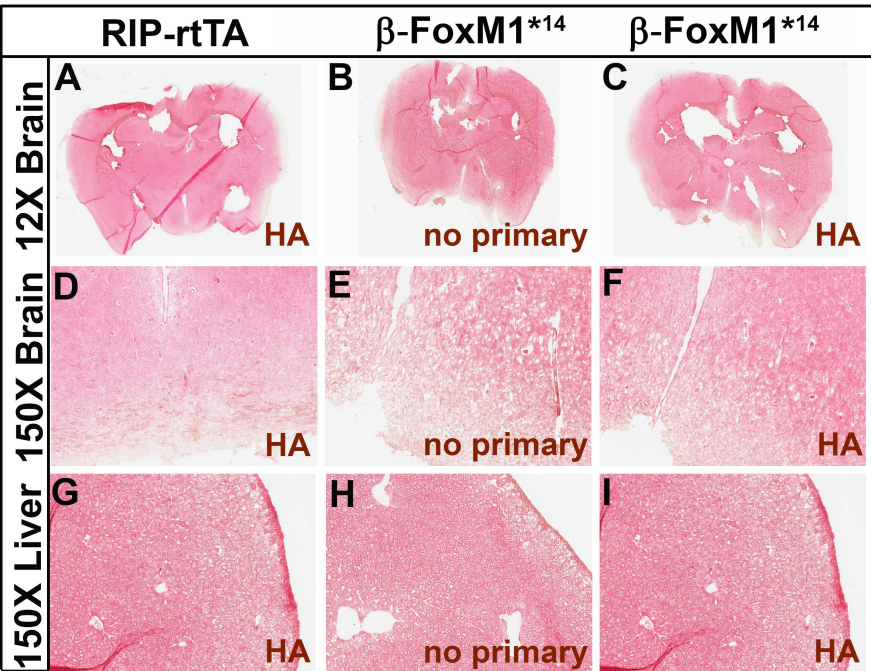


Supplemental Figure 1. HA-FoxM1^{ΔNRD} is not detectable in brain or liver of β-FoxM1* mice. HA immunolabeling (A, C, D, F, G and I) or secondary labeling only (B, E, and F) was performed on *RIP-rtTA* (A, D, and G) or β-FoxM1*¹⁴ (C, F, and I) brains (A-F) and liver (G-I). D, E, and F show increased resolution of the hypothalamic area from images A, B, and C, respectively.

Supplemental Table 1. Genes significantly altered between β-FoxM1. p-value <0.05 in conjunction with a q-value <0.1 was considered significant.



Golson et al., Supplementary Figure 1

Gene Name	Fold Change (X ^{.5})	p-value	q-value
4933413G19Rik	7.44	0.00	0.0000
Akp3	6.58	0.00	0.0000
Foxm1	6.56	0.00	0.0000
Apoa4	6.33	0.00	0.0000
Alpi	6.09	0.00	0.0000
Clca3	5.29	0.00	0.0000
Kcnj5	4.39	0.00	0.0000
S100g	4.02	0.00	0.0000
Fcgbp	3.95	0.00	0.0000
Gm773	3.73	0.00	0.0000
Pck1	3.54	0.00	0.0000
Krt20	3.49	0.00	0.0000
Fabp2	3.39	0.00	0.0000
Fabp1	3.14	0.00	0.0002
Prap1	3.13	0.00	0.0000
Treh	3.11	0.00	0.0000
AI747448	3.07	0.00	0.0005
Adamdec1	2.99	0.00	0.0001
Cyp3a11	2.92	0.00	0.0017
Slc30a10	2.91	0.00	0.0000
Sis	2.82	0.00	0.0006
Cdh17	2.81	0.00	0.0001
Rbp2	2.80	0.00	0.0000
Apoc2	2.78	0.00	0.0000
Cd51	2.76	0.00	0.0063
Coch	2.75	0.00	0.0000
Guca2b	2.72	0.00	0.0095
Cdhr5	2.66	0.00	0.0000
Slc13a1	2.62	0.00	0.0218
Tm4sf5	2.61	0.00	0.0011
Mep1b	2.56	0.00	0.0324
Adh6a	2.56	0.00	0.0324
Igj	2.54	0.00	0.0000
Nr5a1	2.51	0.00	0.0492
Reg4	2.48	0.00	0.0492
Gdpd2	2.44	0.00	0.0742
Emr4	2.37	0.00	0.0000
Gm5506	2.28	0.00	0.0000
Clec2e	2.28	0.00	0.0526
Sell	2.11	0.00	0.0780
Tmprss15	2.07	0.00	0.0775

Apoc3	2.03	0.00	0.0542
Lct	2.00	0.00	0.0000
Tff3	1.91	0.00	0.0000
Cyp4f14	1.82	0.00	0.0063
Adm2	1.81	0.00	0.0000
Xlr4a	1.80	0.00	0.0017
Cyp2d26	1.63	0.00	0.0158
Myo1a	1.63	0.00	0.0008
Muc13	1.62	0.00	0.0006
Gm5801	1.59	0.00	0.0000
Slc45a3	1.55	0.00	0.0025
Cubn	1.53	0.00	0.0832
Ctrc	1.43	0.00	0.0000
Trib3	1.39	0.00	0.0000
Cyp3a13	1.34	0.00	0.0183
1700001O22Rik	1.30	0.00	0.0036
Angptl7	1.30	0.00	0.0000
Aldob	1.26	0.00	0.0001
Aldh1a3	1.25	0.00	0.0000
Slc7a11	1.23	0.00	0.0000
E230016K23Rik	1.17	0.00	0.0137
Trnp1	1.15	0.00	0.0000
Ankrd9	1.11	0.00	0.0314
Extl1	1.10	0.00	0.0027
Gdf15	1.08	0.00	0.0023
Gm7120	1.06	0.00	0.0000
Cd22	1.06	0.00	0.0319
Slc7a3	1.05	0.00	0.0001
Ifi2712a	1.03	0.00	0.0349
Chrna4	0.99	0.00	0.0131
Lrrc38	0.97	0.00	0.0047
Aim11	0.96	0.00	0.0896
Rbp7	0.92	0.00	0.0001
Trim66	0.89	0.00	0.0001
Gm16197	0.86	0.00	0.0016
AA388235	0.86	0.00	0.0016
Ovol2	0.86	0.00	0.0000
Xist	0.84	0.00	0.0487
Mrc1	0.83	0.00	0.0183
Tsix	0.83	0.00	0.0324
Vcam1	0.82	0.00	0.0014
Caps2	0.82	0.00	0.0001
Il16	0.81	0.00	0.0734

Dusp26	0.76	0.00	0.0000
Ccl28	0.76	0.00	0.0000
Cartpt	0.75	0.00	0.0080
Rnaset2b	0.74	0.00	0.0151
Zbtb16	0.73	0.00	0.0184
Odz4	0.72	0.00	0.0003
Gldc	0.72	0.00	0.0185
Rps18	0.71	0.00	0.0002
Prex1	0.70	0.00	0.0002
Grem2	0.70	0.00	0.0302
Tbx1	0.67	0.00	0.0944
Psat1	0.67	0.00	0.0011
Itgad	0.66	0.00	0.0452
Afm	0.66	0.00	0.0560
H2-Q2	0.66	0.00	0.0006
Hmox1	0.64	0.00	0.0077
Tsku	0.62	0.00	0.0307
Chac1	0.61	0.00	0.0031
Myo7a	0.59	0.00	0.0106
Atp6v0c-ps2	0.58	0.00	0.0060
Vgf	0.58	0.00	0.0049
H2-K1	0.57	0.00	0.0045
Spsb1	0.56	0.00	0.0160
Arl4d	0.56	0.00	0.0099
Abtb2	0.53	0.00	0.0943
Cldn6	0.52	0.00	0.0982
Shmt2	0.52	0.00	0.0285
Klf15	0.51	0.00	0.0379
Cdkn1a	0.51	0.00	0.0330
Eif4ebp1	0.49	0.00	0.0581
5830417I10Rik	0.49	0.00	0.0566
Lad1	0.48	0.00	0.0724
H2-T22	0.47	0.00	0.0849
H2-T9	0.47	0.00	0.0896
Slc1a4	0.46	0.00	0.0931
Cela1	-0.45	0.00	0.0786
Ahnak	-0.46	0.00	0.0775
Vim	-0.46	0.00	0.0925
Col6a2	-0.47	0.00	0.0952
Pde2a	-0.48	0.00	0.0986
Zeb2	-0.49	0.00	0.0986
Jam2	-0.49	0.00	0.0464
Cxcl12	-0.50	0.00	0.0925

Lyz2	-0.50	0.00	0.0980
Nsg2	-0.51	0.00	0.0953
Fosl2	-0.51	0.00	0.0378
Parm1	-0.52	0.00	0.0691
Zbtb20	-0.52	0.00	0.0775
Col6a3	-0.53	0.00	0.0324
Stmn2	-0.53	0.00	0.0491
Serpini2	-0.53	0.00	0.0238
Gfra2	-0.54	0.00	0.0977
Hand2	-0.54	0.00	0.0925
Arhgef10	-0.54	0.00	0.0205
Cilp	-0.54	0.00	0.0239
Col3a1	-0.55	0.00	0.0081
Col5a2	-0.55	0.00	0.0276
Akap6	-0.57	0.00	0.0151
Fam198b	-0.57	0.00	0.0963
Sik1	-0.57	0.00	0.0069
Aebp1	-0.58	0.00	0.0302
Adamts10	-0.58	0.00	0.0175
Npas4	-0.59	0.00	0.0046
Col5a1	-0.59	0.00	0.0136
Ptger3	-0.59	0.00	0.0734
C530028O21Rik	-0.59	0.00	0.0036
6330403A02Rik	-0.60	0.00	0.0218
Abca8a	-0.60	0.00	0.0078
Kcna6	-0.61	0.00	0.0542
Plk2	-0.61	0.00	0.0034
Reg3d	-0.61	0.00	0.0520
Sncg	-0.61	0.00	0.0160
Slc18a3	-0.62	0.00	0.0299
Prep	-0.62	0.00	0.0297
Dcn	-0.62	0.00	0.0036
Prss3	-0.62	0.00	0.0184
Slc15a2	-0.63	0.00	0.0134
Npy	-0.64	0.00	0.0108
Col1a2	-0.65	0.00	0.0006
4930539E08Rik	-0.65	0.00	0.0314
Reep1	-0.66	0.00	0.0119
Mki67	-0.66	0.00	0.0017
Scn7a	-0.66	0.00	0.0020
Top2a	-0.66	0.00	0.0023
Dkk3	-0.67	0.00	0.0106
Scn2b	-0.67	0.00	0.0361

Srp54a	-0.68	0.00	0.0244
Zfhx4	-0.69	0.00	0.0305
Tmprss5	-0.69	0.00	0.0642
Avil	-0.69	0.00	0.0063
Cenpe	-0.70	0.00	0.0644
Fbln2	-0.70	0.00	0.0007
Rtp1	-0.70	0.00	0.0061
Ccdc141	-0.71	0.00	0.0330
Svep1	-0.71	0.00	0.0099
Adamts1	-0.71	0.00	0.0001
Lum	-0.71	0.00	0.0083
Adam11	-0.71	0.00	0.0015
Hdc	-0.72	0.00	0.0447
A930015D03Rik	-0.72	0.00	0.0073
Dmbt1	-0.73	0.00	0.0000
Chl1	-0.73	0.00	0.0005
Cadm3	-0.73	0.00	0.0016
Lrrtm1	-0.73	0.00	0.0307
Cplx1	-0.74	0.00	0.0052
Add2	-0.74	0.00	0.0539
Kcnq5	-0.74	0.00	0.0561
Adap1	-0.75	0.00	0.0775
Cdh19	-0.76	0.00	0.0074
3110047P20Rik	-0.76	0.00	0.0504
St8sia2	-0.76	0.00	0.0566
Prph	-0.76	0.00	0.0002
Begain	-0.76	0.00	0.0319
Col1a1	-0.77	0.00	0.0000
Hmmr	-0.77	0.00	0.0218
Slc10a4	-0.77	0.00	0.0063
Serpina3n	-0.77	0.00	0.0775
Htra3	-0.80	0.00	0.0025
Nefl	-0.81	0.00	0.0009
Arhgap28	-0.81	0.00	0.0780
Rbpjl	-0.83	0.00	0.0000
Ptprt	-0.83	0.00	0.0000
Slc5a7	-0.84	0.00	0.0001
Hmgcs2	-0.85	0.00	0.0018
Olf78	-0.85	0.00	0.0025
Cnksr2	-0.86	0.00	0.0699
Lynx1	-0.86	0.00	0.0002
Phox2b	-0.86	0.00	0.0081
Vwf	-0.86	0.00	0.0000

Nos1	-0.87	0.00	0.0000
Reg1	-0.89	0.00	0.0000
Pdgfra	-0.90	0.00	0.0013
Aspm	-0.90	0.00	0.0063
Gm8801	-0.91	0.00	0.0487
Cenpf	-0.92	0.00	0.0001
Olfml1	-0.94	0.00	0.0959
Pgm5	-0.94	0.00	0.0063
H2-Q8	-0.99	0.00	0.0000
H2-Q1	-1.00	0.00	0.0001
Epha5	-1.01	0.00	0.0023
H2-Q10	-1.02	0.00	0.0002
Esco2	-1.02	0.00	0.0521
Rpph1	-1.08	0.00	0.0789
Chrm1	-1.08	0.00	0.0006
Sycp1	-1.09	0.00	0.0037
Ppp1r3b	-1.10	0.00	0.0000
AI662270	-1.10	0.00	0.0649
Igfbp6	-1.11	0.00	0.0253
Gm8909	-1.11	0.00	0.0000
Gm18756	-1.13	0.00	0.0006
2410017I17Rik	-1.13	0.00	0.0355
Scn1a	-1.15	0.00	0.0619
Apba2	-1.21	0.00	0.0036
Gm11127	-1.24	0.00	0.0000
4833424O15Rik	-1.24	0.00	0.0210
Col11a1	-1.31	0.00	0.0104
Lpcat2b	-1.32	0.00	0.0565
Cyp26b1	-1.45	0.00	0.0000
Gkn2	-1.45	0.00	0.0203
Gpnmb	-1.48	0.00	0.0006
Trim34b	-1.58	0.00	0.0052
Tdrd6	-1.69	0.00	0.0000
Rmrp	-2.04	0.00	0.0023
Itih4	-2.25	0.00	0.0001
Reg3a	-2.33	0.00	0.0080
Reg3b	-3.72	0.00	0.0000
Tex15	-3.90	0.00	0.0000
Reg2	-4.28	0.00	0.0000

Golson et al., Supplementary Figure 1