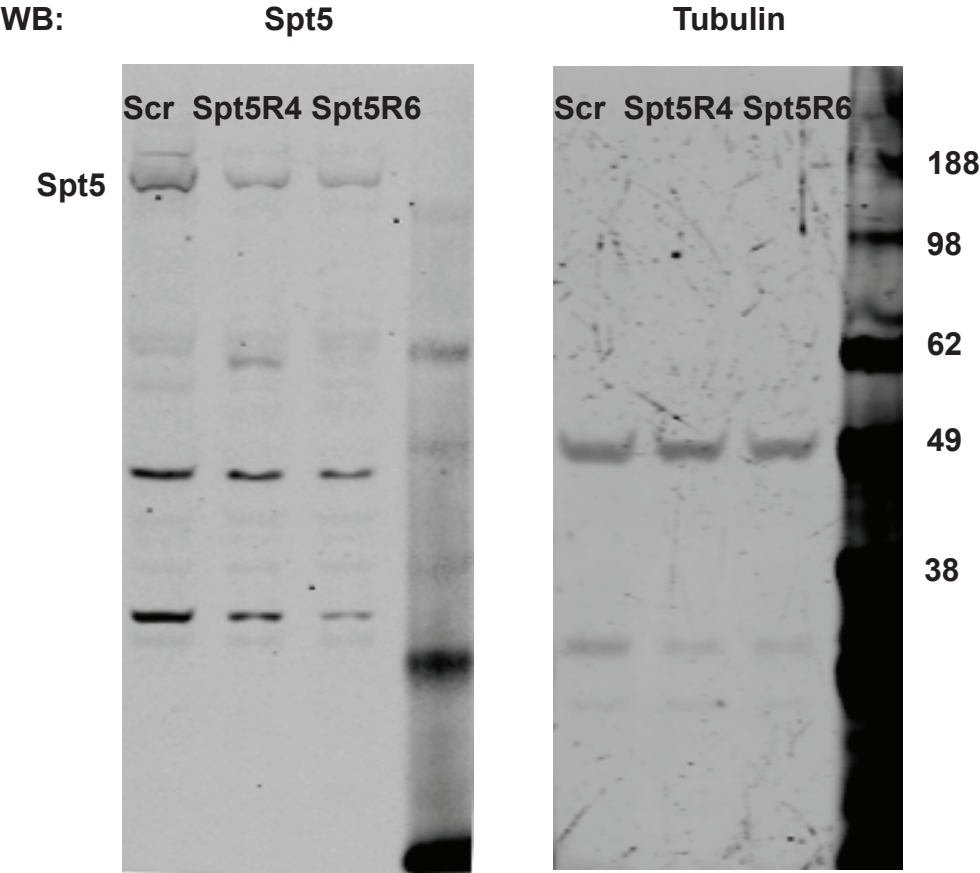
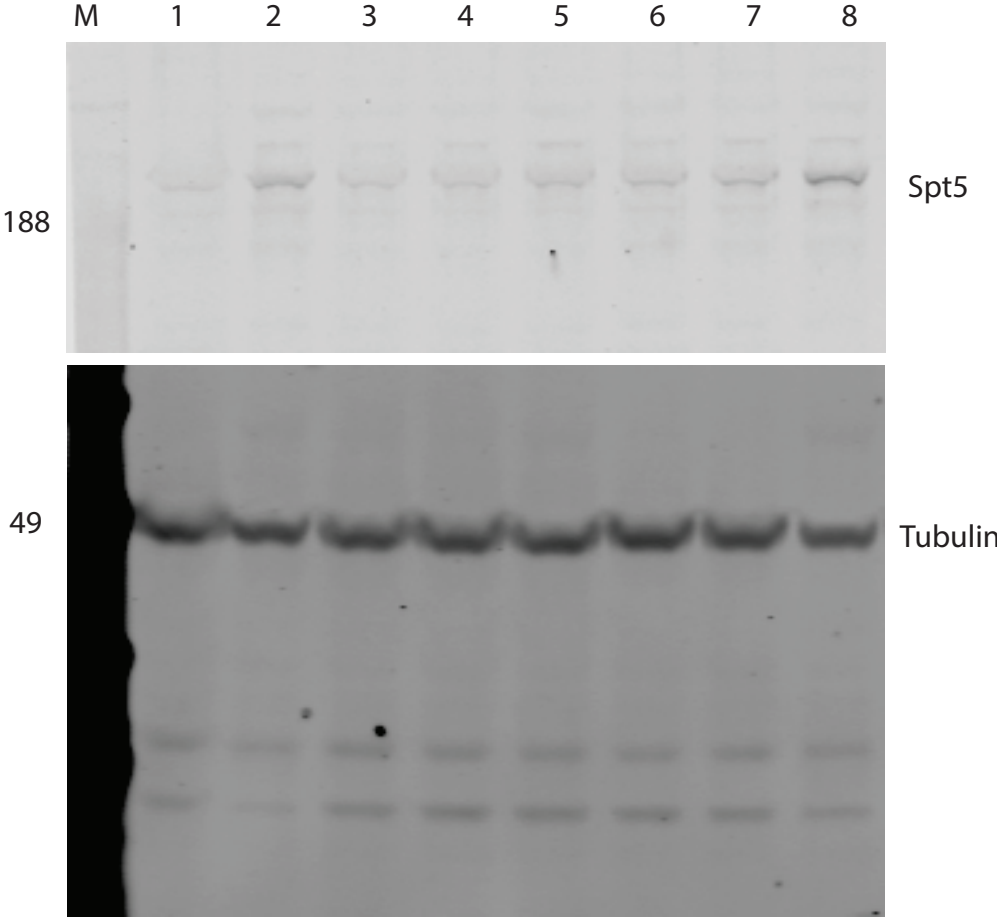


Supplementary Figure-1

Full blot of figure 2a:



Supplementary Figure-2
Full blot of figure 3d:



Supplementary Table 1. List of the primer sets used in the study:

| Gene | Primer name | Primer sequences |
|-------------------------|--------------|---|
| IgH | a | FW: 5'-GAGGACTCTGGGTTTGGTGA-3' REV: 5'-CTCACCCCTGGGAGGTGTATG-3' |
| | b | FW: 5'-CCCAGATGTGAGTGTCTCAGG-3' REV: 5'-GGACCCCTGTGAACAGAAAA-3' |
| | e | FW: 5'-GACACGTCCAAGAAACAGC-3' REV: 5'-GCCCTAGTAATAACTCTCGC-3' |
| | f | FW: 5'-GGTCACCGTCTCCTCAGGTA-3' REV: 5'-CAGGTCCCCTCGGAACAT-3' |
| | g | FW: 5'-ACCTCAGTGCCTTGAAGCTG-3' REV: 5'-CCATTTTTCTCAGAAGCCACTT-3' |
| | h | FW: 5'-GACTGCGTTTTGACCATCAT-3' REV: 5'-CATGCAGCCATCTTGACTCT-3' |
| | i | FW: 5'-GCTGACCGAAACTGAAAAGG-3' REV: 5'-AAAAATGAATGCAGTTTAGAAGTTGA-3' |
| | j | FW: 5'-TTCTGATAGAGTGGCCTTCATTT-3' REV: 5'-TGAAATAATTCAGGATAATGATGCAC-3' |
| | k (ChIP) | FW: 5'-GCATCCGCCCAACCTTTTC-3' REV: 5'-CCAACGGCCACGCTGCTC-3' |
| | k' (mRNA) | FW: 5'-CGGTACTTCGCCACAGCA-3' REV: 5'-ACTTGTCCACGGTCCTCTCGGTGA-3' |
| mCherry | c | FW: 5'-TCAATTCATGTACGGCTCCA-3' REV: 5'-CCGCGGAGTTTAACCTTGTA-3' |
| | d | FW: 5'-ATCGTGGAACAATACGAACGA-3' REV: 5'-GTTTCATAGATCTCCCGGAA-3' |
| AID (AICDA) | | FW: 5'-GCTCTAGAATGGACAGCCTCTTGATG-3' REV: 5'-CGGAATTCCTATCAAAGTCCCAAAGT-3' |
| Rrp40 (EXOSC3) | | FW: 5'-CGGTGTTTACTGGGTGGACT-3' REV: 5'-CAAAGAAGCTGGCTCACTCC-3' |
| Spt5 (SUPT5h) | | FW: 5'-TCGACTACGATCGCATCAAG-3' REV: 5'-CTGTAACGGTTCCCCTCAAA-3' |
| Cyclophilin B (PPIB) | | FW: 5'-ACGCAACATGAAGGTGCTC-3' REV: 5'-ACTTGACGGTGACTTTGGG-3' |

Supplementary Table 2. List of the shRNA sequences used in the study:

| Gene | shRNA | Sense strand sequence |
|----------------|--------------|------------------------------|
| Spt5 (SUPT5h) | SUPT5h-4 | 5'-CCCAATCTGTGGACTGTCAA-3' |
| | SUPT5h-6 | 5'-GCTGATGTTGACGATGAGTAT-3' |
| Spt4 (SUPT4h) | SUPT4h-1 | 5'-AGATGGTATATGACTGCACTA-3' |
| | SUPT4h-2 | 5'-GTCAAGACTATAGACCAGTTT-3' |
| Rrp40 (EXOSC3) | EXOSC3-2 | 5'-GCAGGCTATTAGCTCCAGATT-3' |
| | EXOSC3-4 | 5'-GATTGGCATAGTGACAGCTAA-3' |
| Ctrl-RNAi | | 5'-CAACAAGATGAAGAGCACCAA-3' |