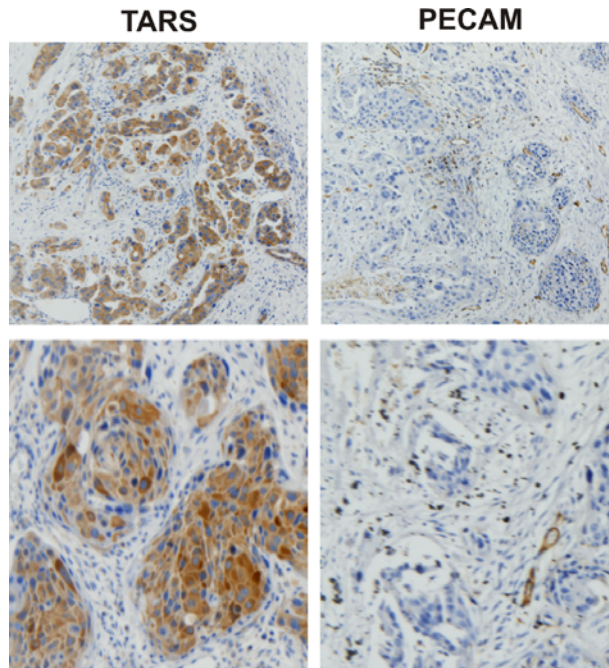
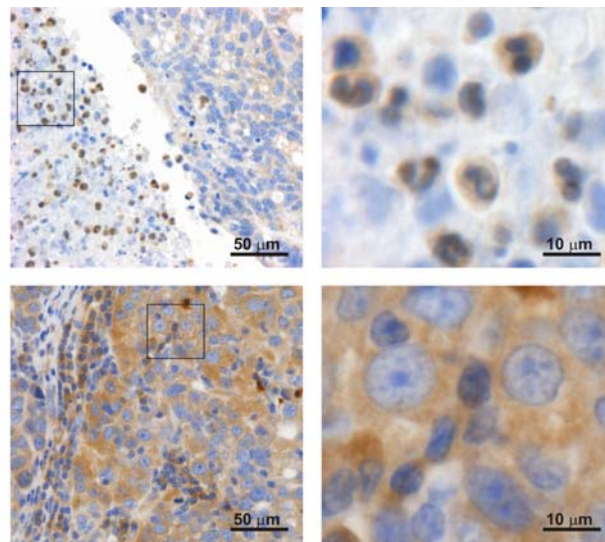


Additional File 3: Images to Supplement Fig 3



A. TARS expression correlates with neovasculature. IHC images showing co-localized TARS with microvascular endothelial cell PECAM staining in ovarian tumor sections magnified at 10x (top) or 40x (bottom).



B. TARS expressed in infiltrating leukocytes within ovarian tumors. Shown are example IHC images from serial ovarian tumor sections (40x) stained with TARS that exhibit infiltrating leukocytes representative of neutrophils (top) and plasma cells (bottom). Box indicates magnified region shown in right panels.