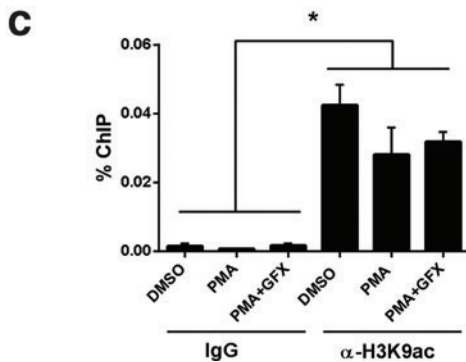


B

CACCAAAGCACACTTCCCTTTCGATTGTAATTATCTGTTACTTTCGCTCTGCCCTCACTGGACCAGAAGCTACCCCTCGGGAGAGG
 CTCTGAGTGTTCGTCCGGGGCTGTGCCCTGGCCCCAGGTACAGTGCCCCACACGTGCTGGGCGCTCCGTAACACTGGATAAGGGAA
 GGAACGGGTGCTCTGGCTAGCTGGCCAGGCTGCTTTGCAAAAAGGCCGTGGCATTTCAGCCGCCGAGAGCCACGTGCGGTGTCCC
 ChIP-SNAIL forward primer →
 TTTCCCTCGCTTCCCTCCAGTGATGTGCGTTTCCCTCGTCAATGCCACGCTCTCCAGGCGCCAGCCGGGCGGAGAAATTC **CGCCCC**
 ← ChIP-SNAIL reverse primer
CTCCCAAGCCCGAG**GCGGGGGCGGG**CGTCGGAAGGTCAGGTGTCCCGCCGGCGCGCAGCGC**CAGGGGGCG**TCAGAAGCGCTCAGAC
 CACCGGGCGCTGAGCCGGTGGGCGCGCGGCTCCTGCCGGGTCCACCTCGCAGAGGCCCTCGCTTCGCTCGACGTCCCGCCCCGGAC
 AGCCCCAGCACCCGGGACGACCCCGCTGCGCCAGCAACCCCGCTCGGAGGAGTCCCCGCCCGGGCTCTCACCGCCACGCGGGCGG
 AGCCCGGCCAGCAGCCGGCGCACCTGCTCGGGGAGTGGCCTTCGGCGGAGACGAGCCTCCGATTGGCGGGAGGTGACAAGGGGCGT
 GGCAGATAAGGCCCCGCCCTCCACCCCCACCACCCCCGGAGTACTTAAGGGAGTTGGCGGCGCTGCTGCAT
 +1 (TSS) →



SUPPLEMENTARY FIG. S2. Putative early growth response protein-1 (EGR-1) binding sites in the *SNAIL* promoter region. (A) EGR-1 binding sites in the *SNAIL* promoter region of human THP-1 cells, provided by the FANTOM 4 database (<http://fantom.gsc.riken.jp/4/>) [47]. (B) Putative EGR-1 binding sites within upstream of the transcriptional start site (TSS indicated by an arrow) of the *SNAIL* are highlighted by boxes that EGR-1 binds to the specific GC-rich consensus binding site GCG(G/T)GGGCG [43,51]. Position of primer pairs using for chromatin immunoprecipitation (ChIP)-quantitative polymerase chain reaction assay are indicated arrows. (C) ChIP assay with the H3K9ac antibody using the primer pairs designated *SNAIL* promoter region. The cells were treated with dimethyl sulfoxide (DMSO), PMA (10 nM), or PMA together with GFX (5 μM) for 3 h. The data are represented as mean ± SE ($n=3$). * $P < 0.05$.