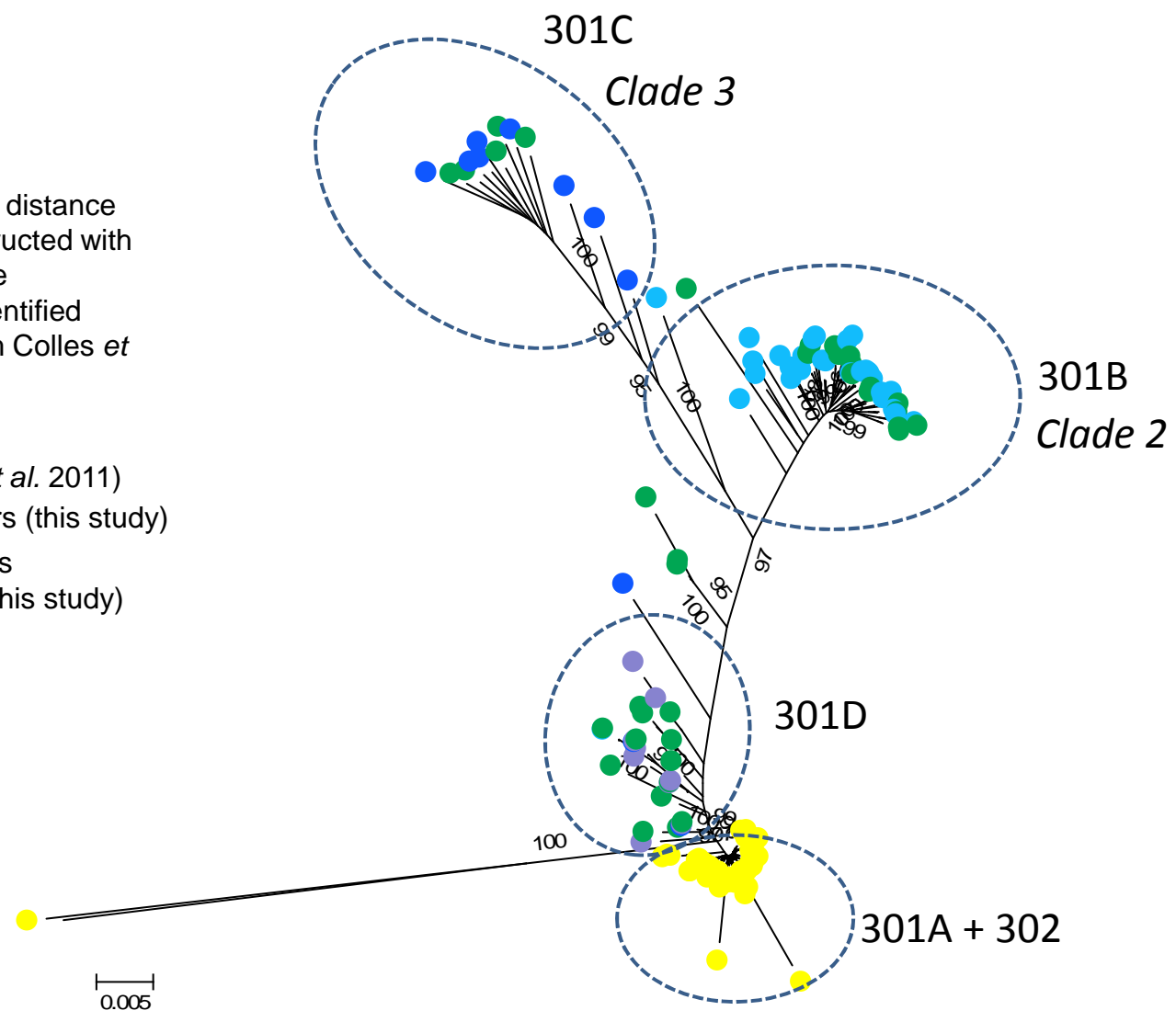


Additional file 2
Neighbour-joining radial distance
phylogenetic tree constructed with
concatenated nucleotide
sequences from STs identified
from this study and from Colles *et al.* (2011) on wild and
domesticated ducks.

- Wild ducks (Colles *et al.* 2011)
- ● ● Surface waters (this study)
- Domesticated animals
and surface waters (this study)



Bootstrap support values (%) for each of the nodes leading to the *gyrA* sequence clusters are indicated.