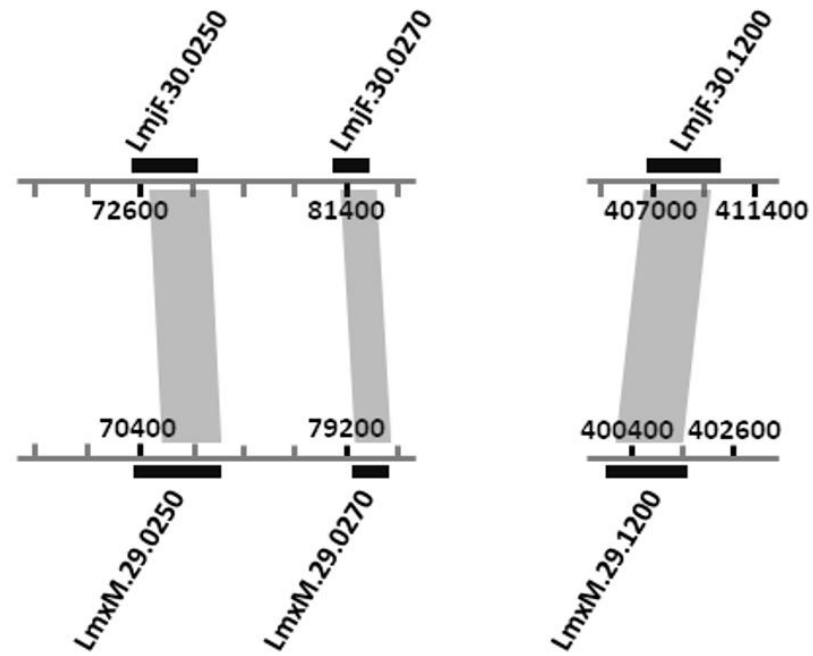
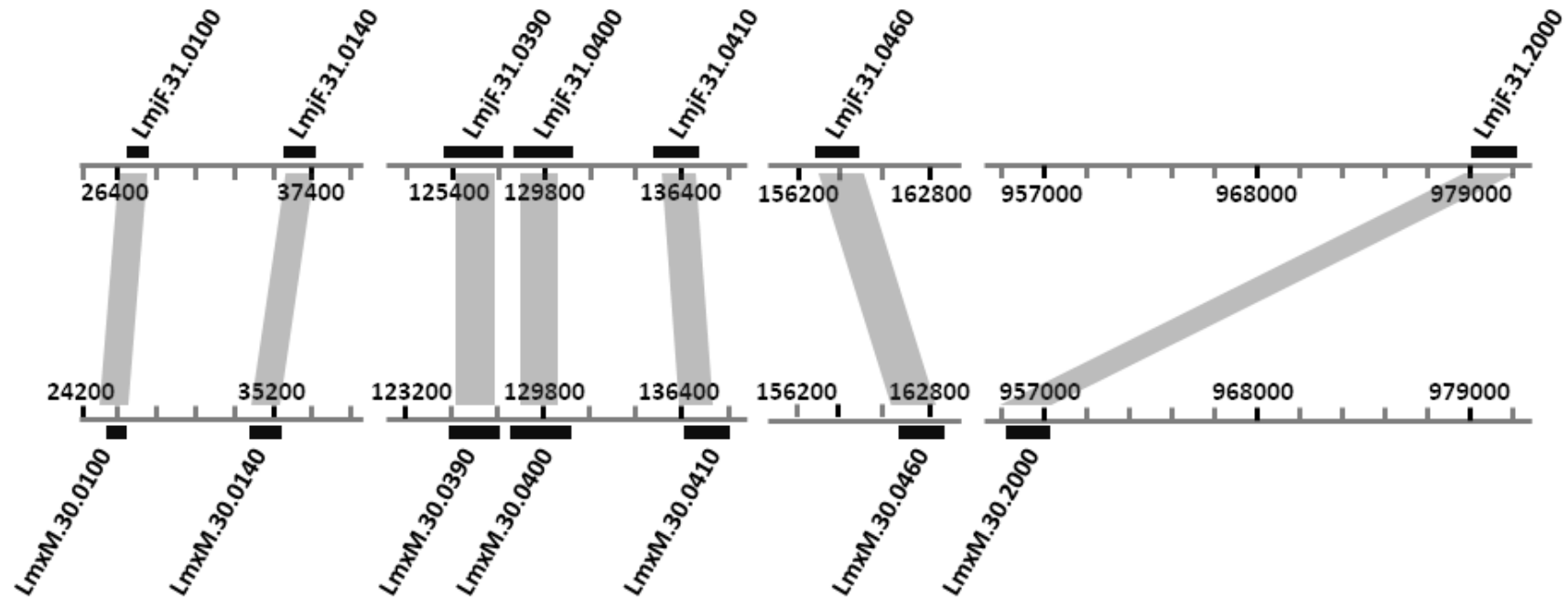


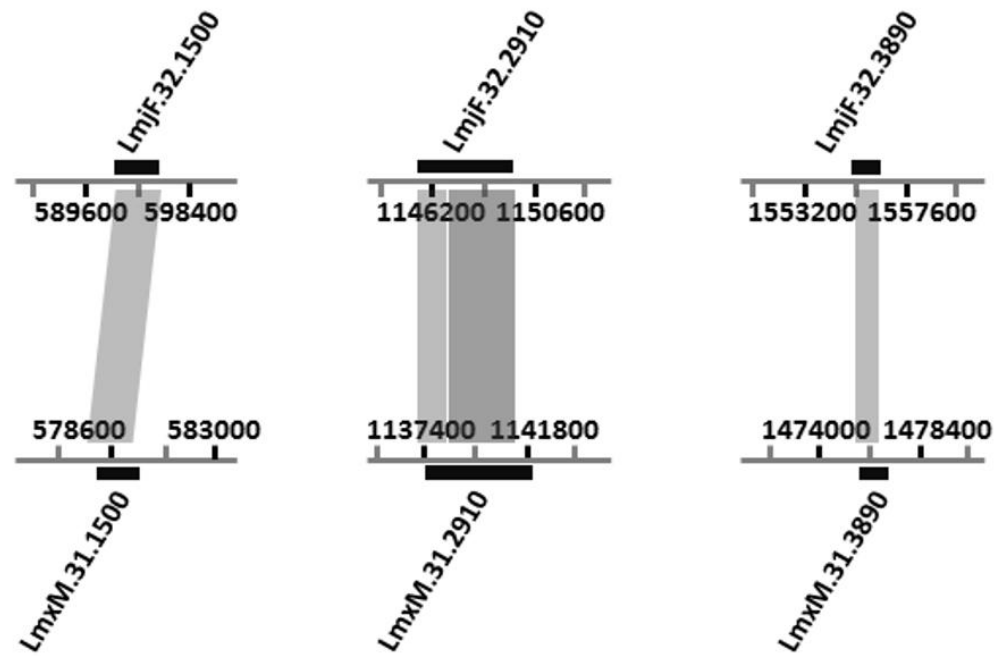
Supplementary figure 1: Representation of fusion events between chromosomes 29 and 8 of *L. (L.) major* (LmjF) and *L. (L.) mexicana* (LmxM), respectively.



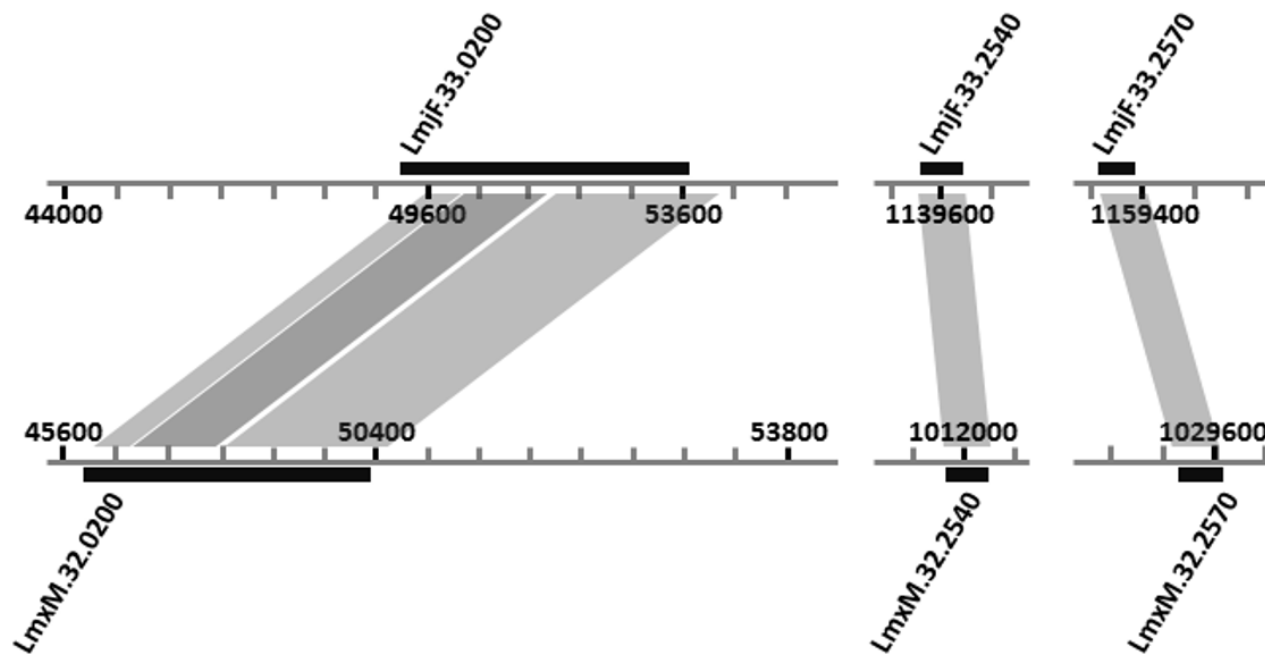
Supplementary figure 2: Representation of allelic transpositions between chromosomes 30 and 29 of *L. (L.) major* (LmjF) and *L. (L.) mexicana* (LmxM), respectively.



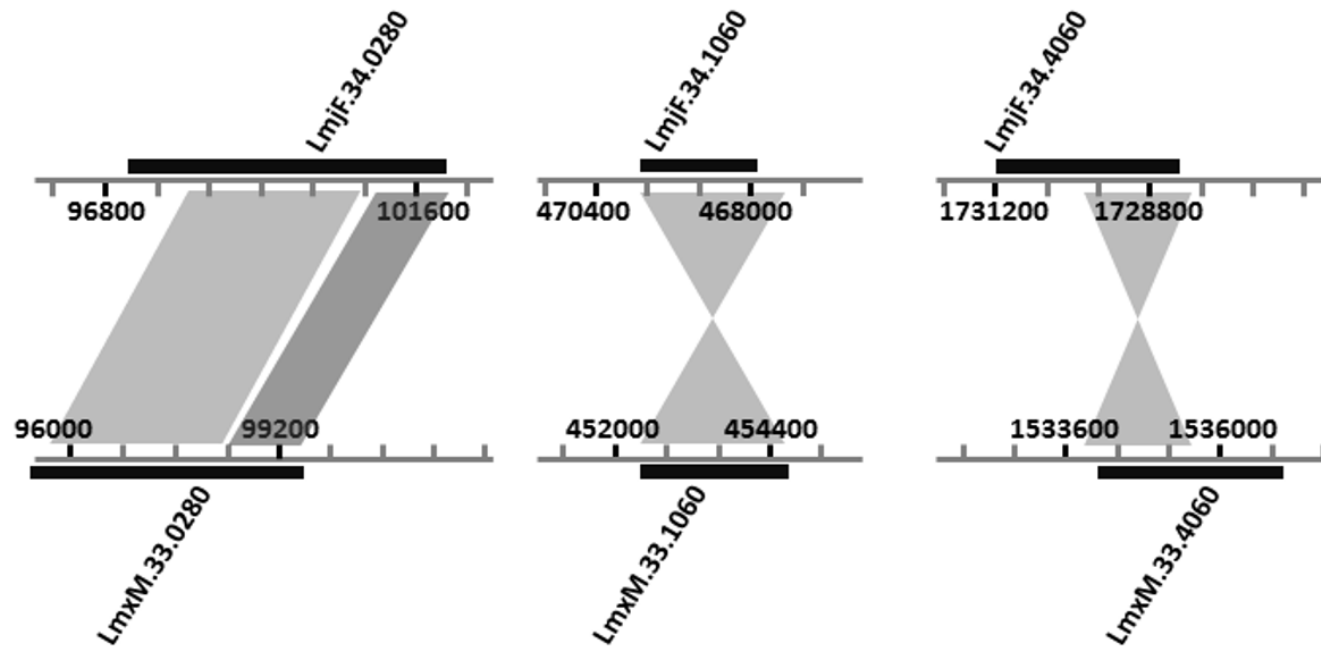
Supplementary figure 3: Representation of allelic transpositions between chromosomes 31 and 30 of *L. (L.) major* (LmjF) and *L. (L.) mexicana* (LmxM), respectively.



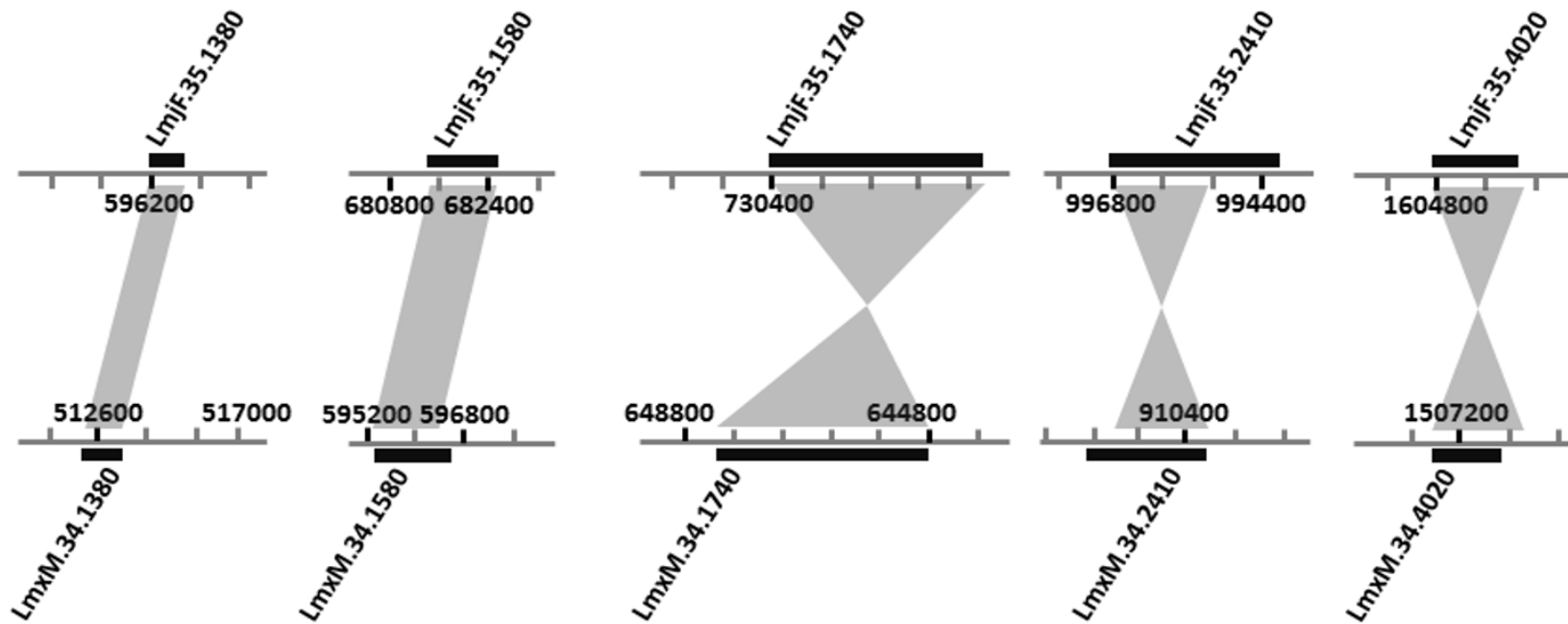
Supplementary figure 4: Representation of allelic transpositions between chromosomes 32 and 31 of *L. (L.) major* (LmjF) and *L. (L.) mexicana* (LmxM), respectively.



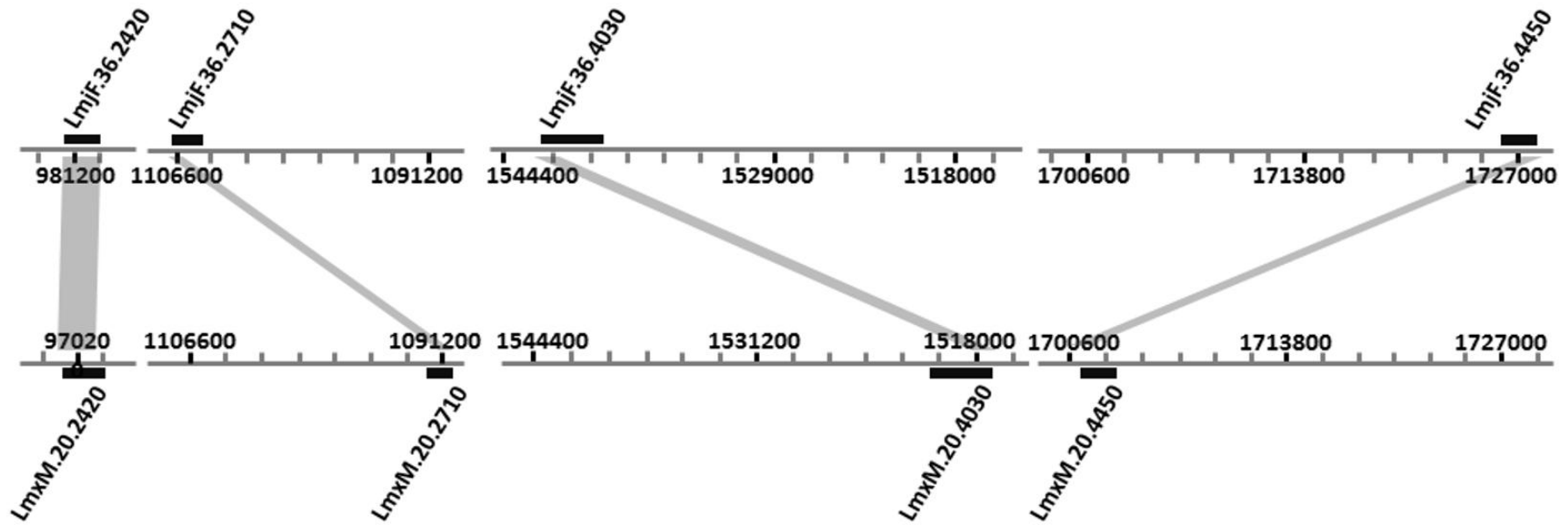
Supplementary figure 5: Representation of allelic transpositions between chromosomes 33 and 32 of *L. (L.) major* (LmjF) and *L. (L.) mexicana* (LmxM), respectively.



Supplementary figure 6: Representation of allelic transpositions between chromosomes 34 and 33 of *L. (L.) major* (LmjF) and *L. (L.) mexicana* (LmxM), respectively.



Supplementary figure 7: Representation of allelic transpositions between chromosomes 35 and 34 of *L. (L.) major* (LmjF) and *L. (L.) mexicana* (LmxM), respectively.



Supplementary figure 8: Representation of fusion events between chromosomes 36 and 20 of *L. (L.) major* (LmjF) and *L. (L.) mexicana* (LmxM), respectively.