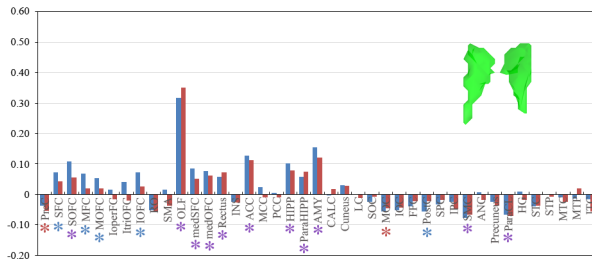
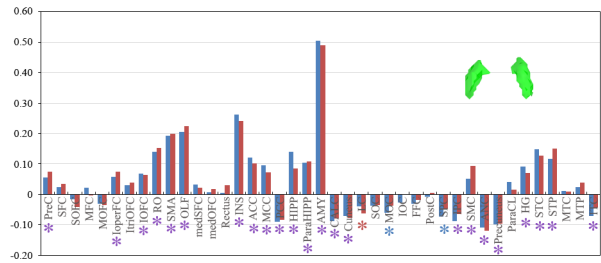


A. The entire caudate

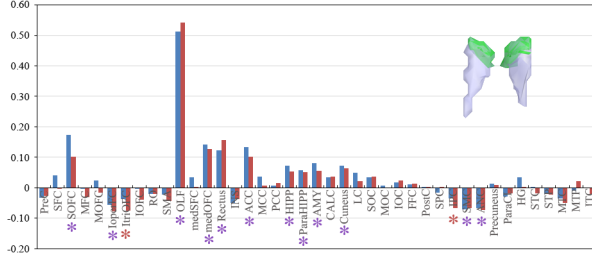


The entire putamen

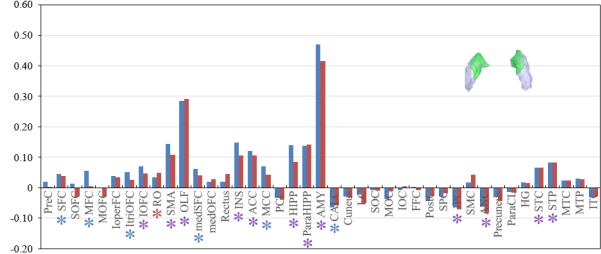


B. $K=2$

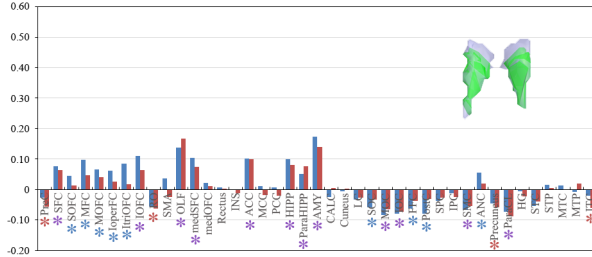
Caudate cluster 1



Putamen cluster 1



Caudate cluster 2



Putamen cluster 2

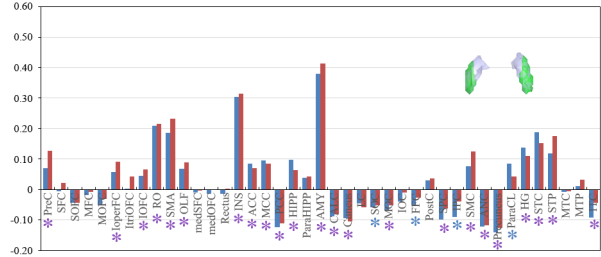


Figure S3. ROI analysis results for functional connectivity between striatal clusters identified by using clustering algorithms ($K = 2$) and other brain regions segmented based on the AAL atlas. Part A: The FC between the entire voxels within the caudate and putamen, respectively, and other regions. Part B: The FC between clusters identified by $K = 2$ and other regions (B). The x-axis indicates brain regions, and the y-axis indicates the strength of functional connectivity between each cluster as a seed region and other brain regions, as correlation z scores. The red and blue bars respectively indicate the area located in the right and left hemisphere. The red, blue, and purple asterisks respectively indicate that these regions located in the right, left, and bilateral hemisphere had significant functional connectivity with the cluster region under a false discovery rate threshold of $q < 0.05$.