

Additional file 3: Total numbers of nightly mosquito catches in experimental huts.

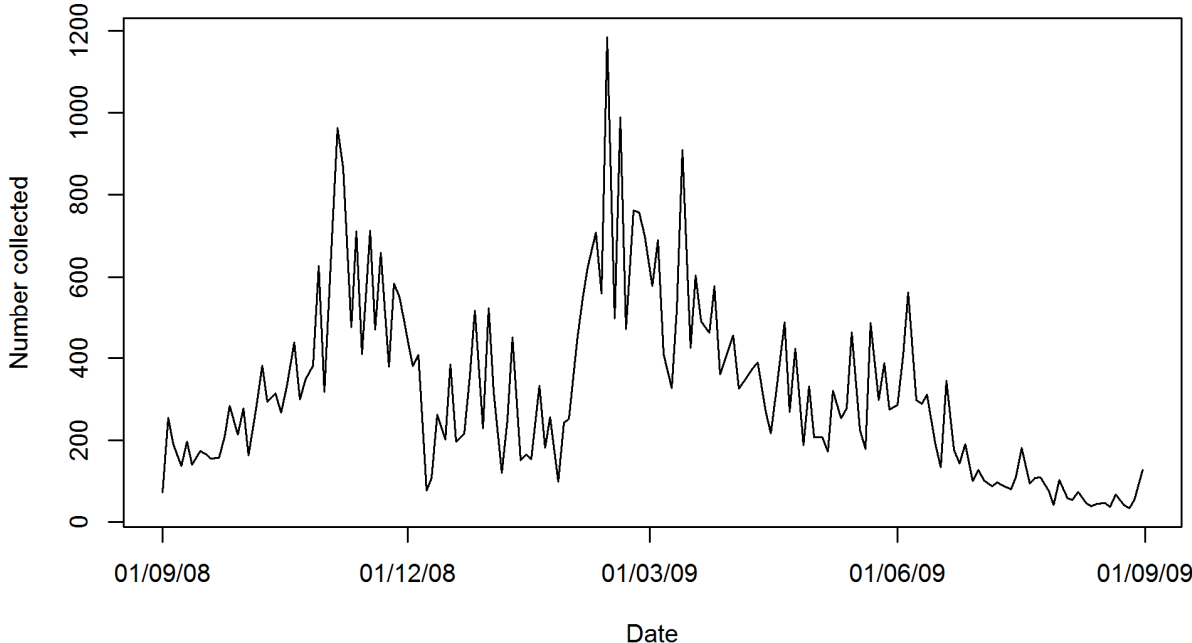


Figure 3.1. Total number of *An. gambiae* s.l. collected in all 24 experimental huts per trapping night.

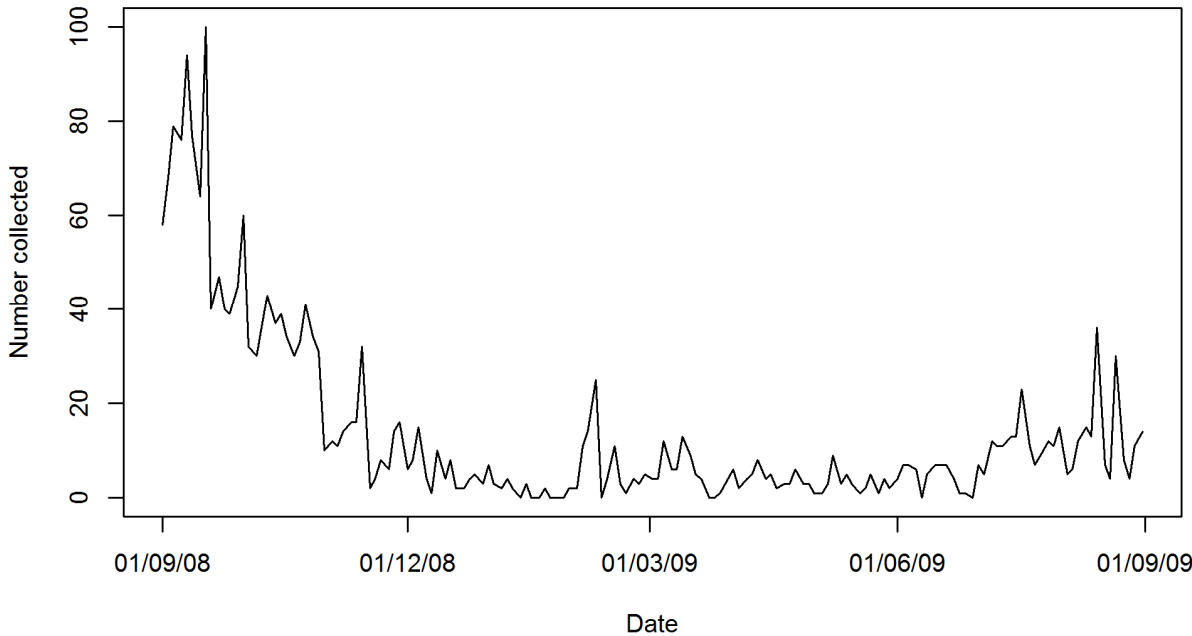


Figure 3.2. Total number of *An. funestus* collected in all 24 experimental huts per trapping night.

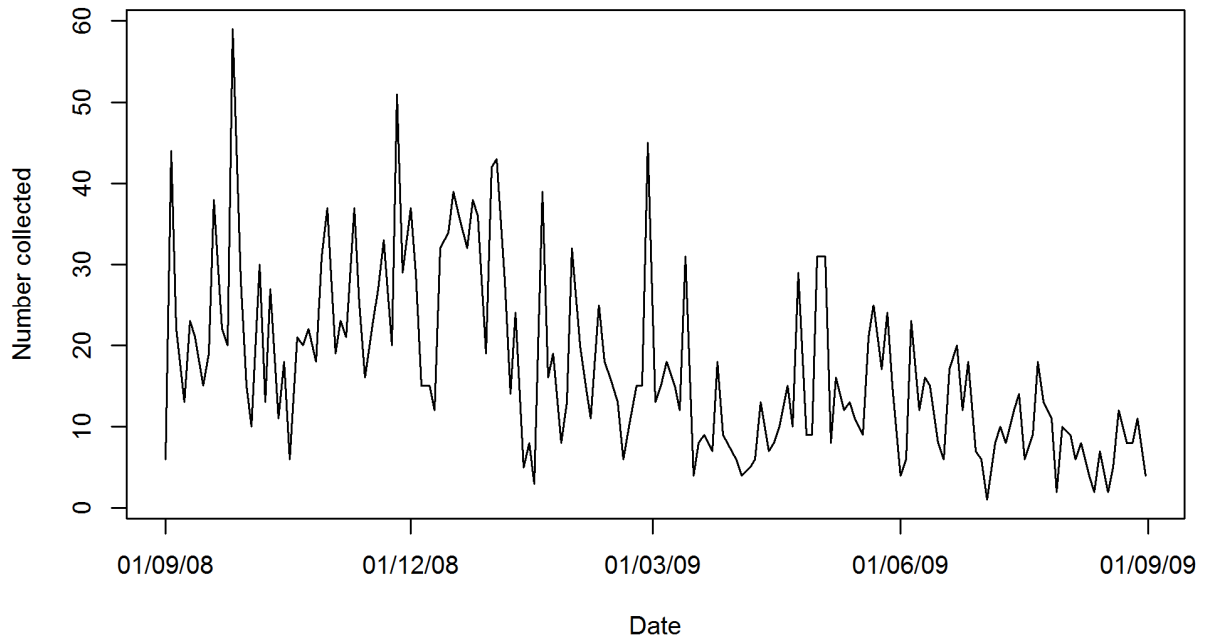


Figure 3.3. Total number of anophelines other than *An. gambiae* s.l. and *An. funestus* collected in all 24 experimental huts per trapping night.

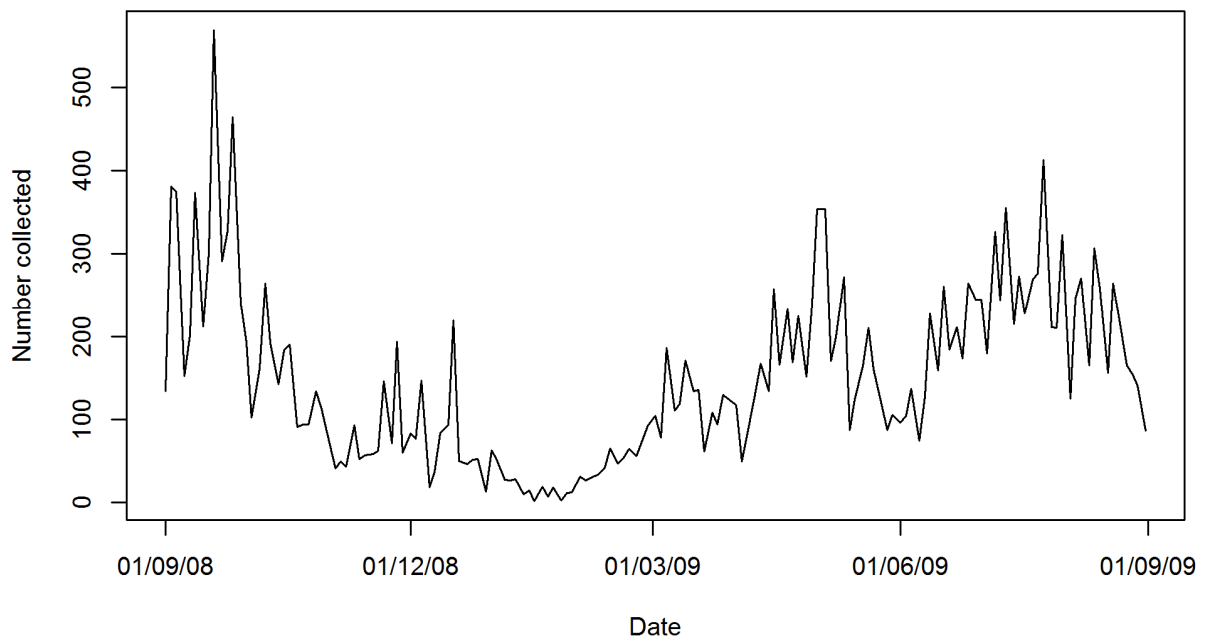


Figure 3.4. Total number of mosquito species other than anophelines collected in all 24 experimental huts per trapping night.