

Additional file

Figure S1

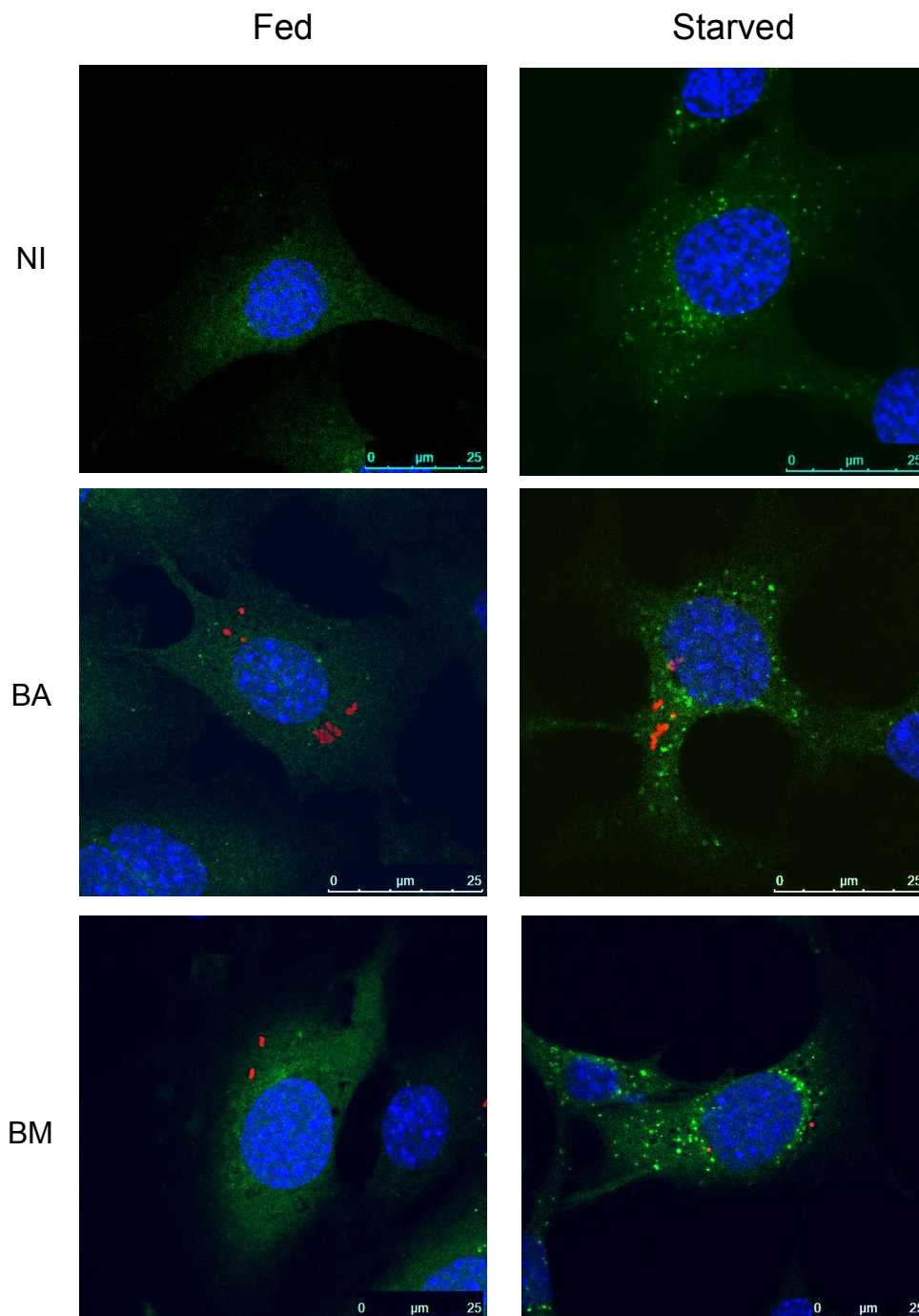


Figure S1. GFP-LC3 labelling in WT MEFs infected or not with *B. abortus* or *B. melitensis*. WT MEFs stably expressing GFP-LC3 were maintained under normal conditions (left) or under starved conditions (right). NI, BA and BM correspond to non infected cells, cells infected with *B. abortus* and cells infected with *B. melitensis*, respectively. MEFs were fixed at 10 h p.i. Bacteria were detected with a monoclonal anti-LPS antibody and an anti-mouse IgG Texas Red-conjugated secondary antibody. Nuclei were stained with DAPI.