

Stage of Breast Cancer Progression Influences Cellular Response to Activation of the WNT/Planar Cell Polarity Pathway

Connor D. MacMillan^{1,2,3}, Hon S. Leong^{2,3}, David W. Dales², Amy E. Robertson^{2,5}, John D. Lewis⁶, Ann F. Chambers^{1,2,4,5}, Alan B. Tuck^{1,2,4}

¹Department of Pathology, Schulich School of Medicine and Dentistry, University of Western Ontario, London, ON;

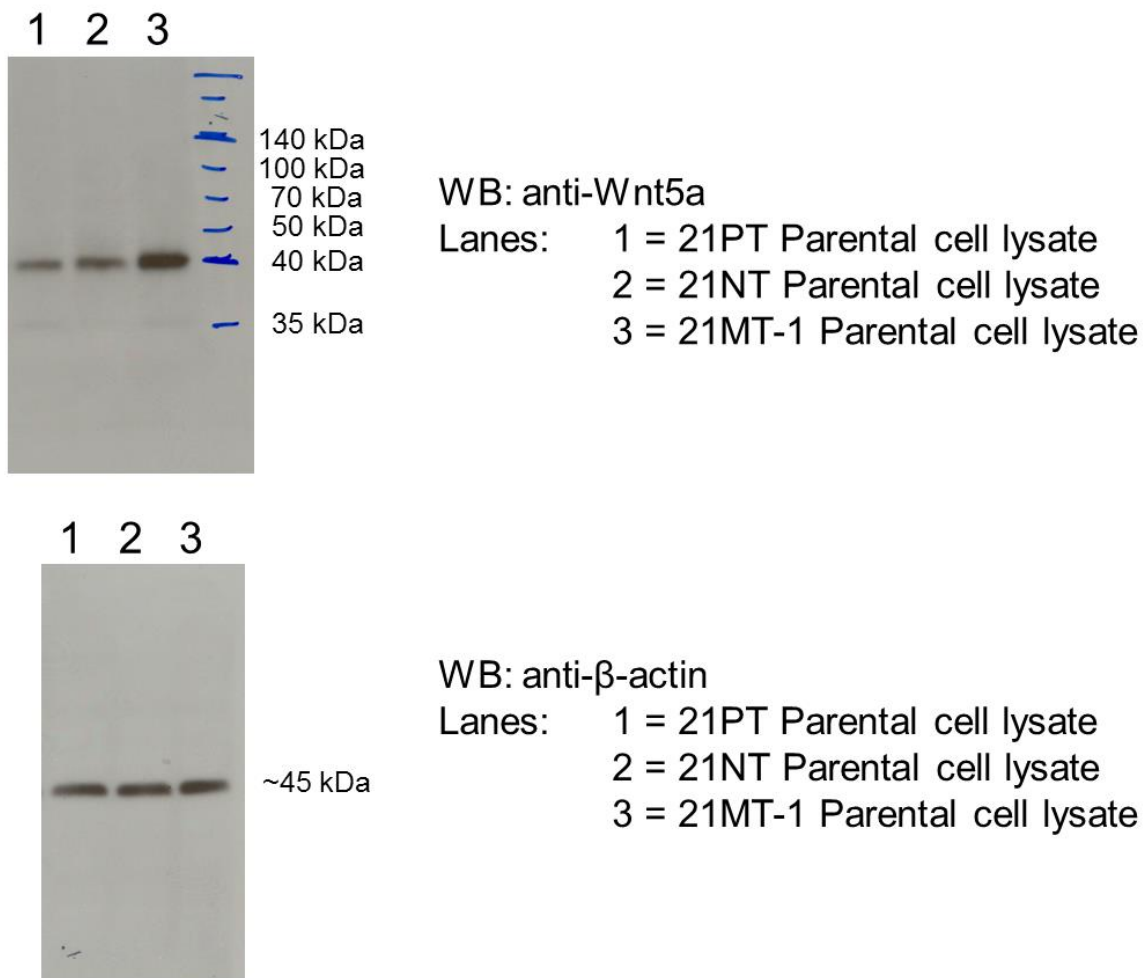
²London Regional Cancer Program, London Health Sciences Centre, London, ON;

³Department of Surgery, Schulich School of Medicine and Dentistry, University of Western Ontario, London, ON;

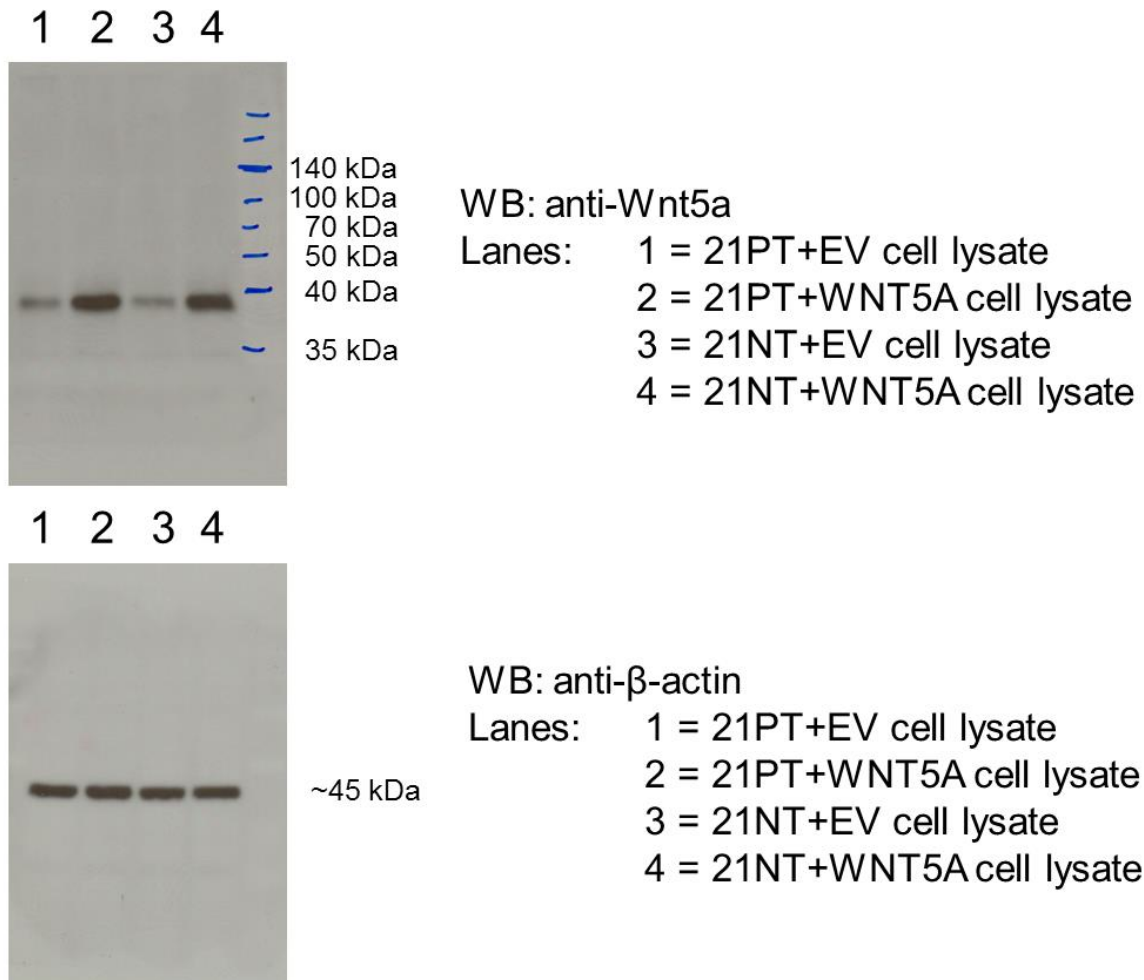
⁴Department of Oncology, Schulich School of Medicine and Dentistry, University of Western Ontario, London, ON;

⁵Department of Medical Biophysics, Schulich School of Medicine and Dentistry, University of Western Ontario, London, ON;

⁶Department of Oncology, Faculty of Medicine and Dentistry, University of Alberta, Edmonton, AB

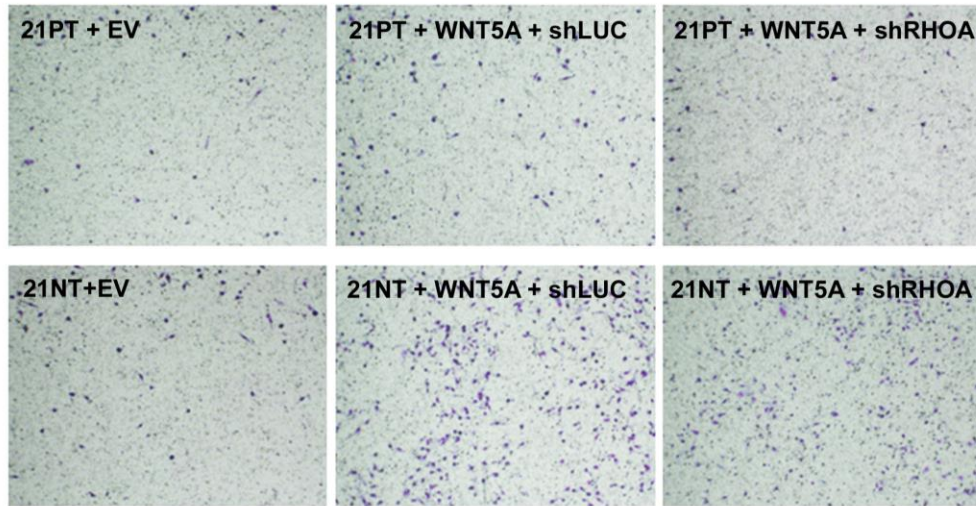


Supplementary Figure S1. Full length western immunoblots as presented in Figure 1A (middle panels). The top immunoblot represents Wnt5A staining. The bottom immunoblot represents beta-actin staining. Lane 1 - 21PT parental cell lysate. Lane 2 - 21NT Parental cell lysate. Lane 3 - 21MT-1 Parental cell lysate.

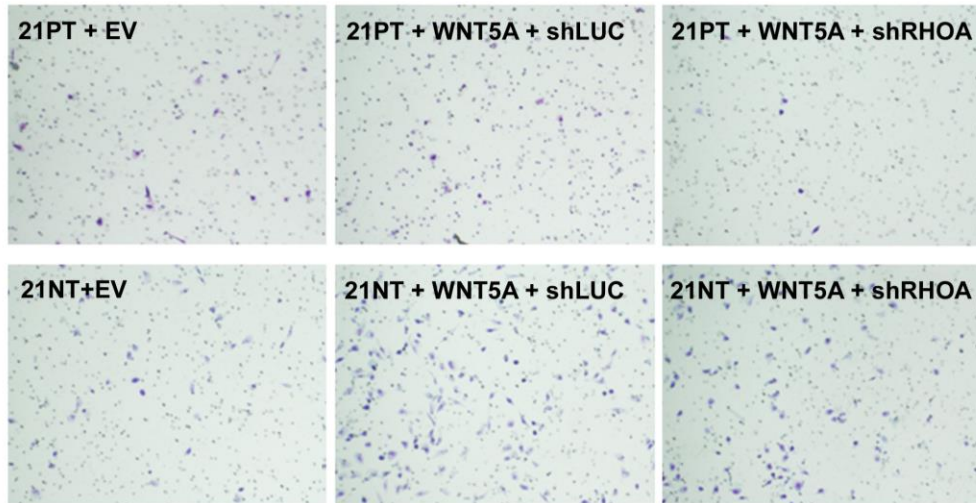


Supplementary Figure S2. Full length western immunoblots as presented in Figure 1B and 1C (middle panels). The top immunoblot represents Wnt5A staining. The bottom immunoblot represents beta-actin staining. Lane 1 - 21PT+EV cell lysate. Lane 2 - 21PT+WNT5A cell lysate. Lane 3 - 21NT+EV cell lysate. Lane 4 - 21NT+WNT5A cell lysate.

A) Migration

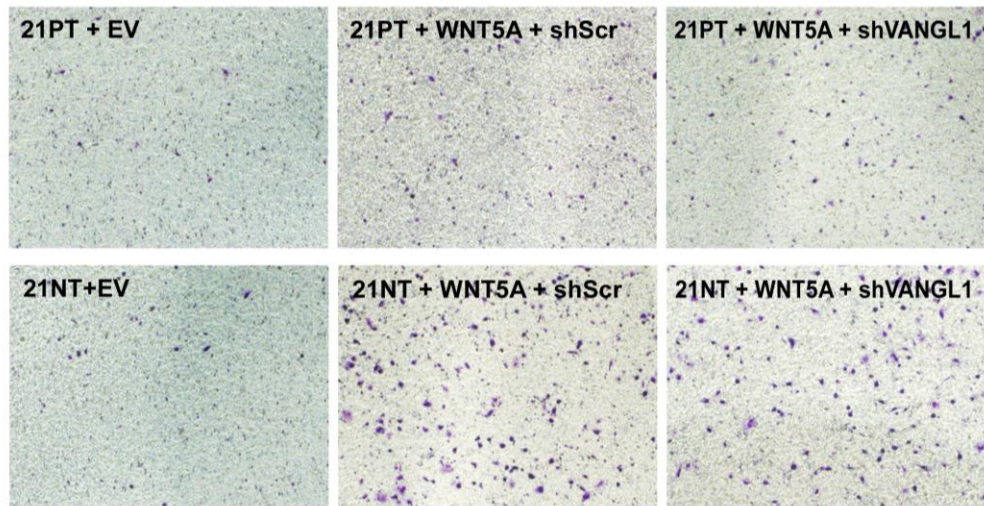


B) Invasion

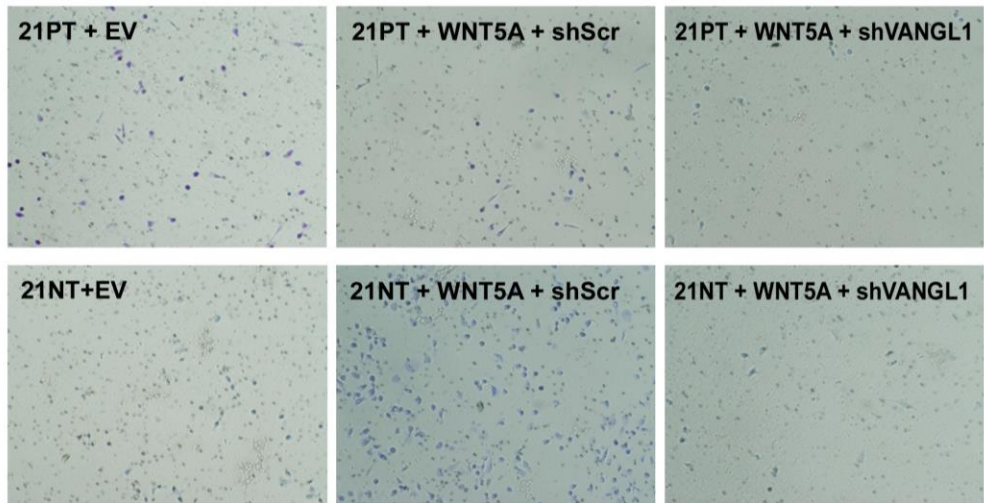


Supplementary Figure S3. Representative Images of Transwell Experiments Presented in Figure 4. A) Migration transwell images of 21PT (top panel which corresponds to Figure 4A middle panel) and 21NT (bottom panel which corresponds to Figure 4B middle panel) cells transfected with WNT5A overexpression plasmid (+WNT5A) and knockdown with shLUC (+shLUC) or shRHOA (+shRHOA). B) Invasion transwell images of 21PT (top panel which corresponds to Figure 4A right panel) and 21NT (bottom panel which corresponds to Figure 4B right panel) cells transfected with WNT5A overexpression plasmid (+WNT5A) and knockdown with shLUC (+shLUC) or shRHOA (+shRHOA).

A) Migration



B) Invasion



Supplementary Figure S4. Representative Images of Transwell Experiments Presented in Figure 5. A) Migration transwell images of 21PT (top panel which corresponds to Figure 5A middle panel) and 21NT (bottom panel which corresponds to Figure 5B middle panel) cells transfected with WNT5A overexpression plasmid (+WNT5A) and knockdown with shScr (+shScr) or shVANGL1 (+shVANGL1). B) Invasion transwell images of 21PT (top panel which corresponds to Figure 5A right panel) and 21NT (bottom panel which corresponds to Figure 5B right panel) cells transfected with WNT5A overexpression plasmid (+WNT5A) and knockdown with shScr (+shScr) or shVANGL1 (+shVANGL1).