

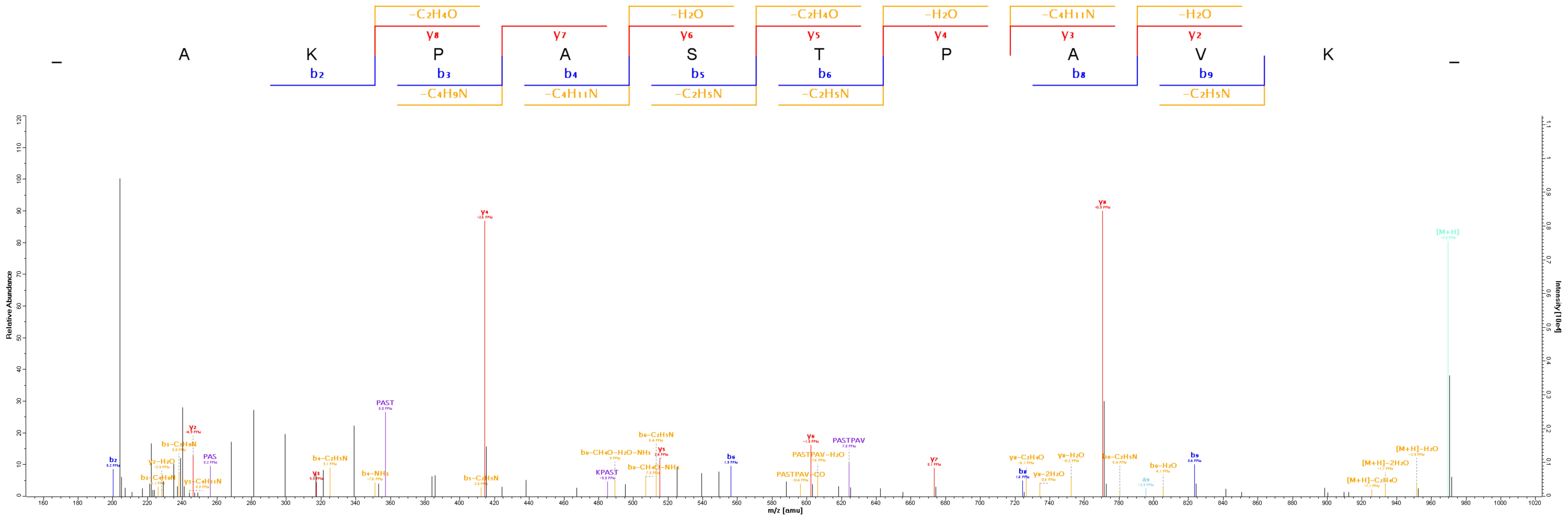
Supplementary Table 3 : HCD identified *Acinetobacter baumannii* (strain SDF) glycopeptides

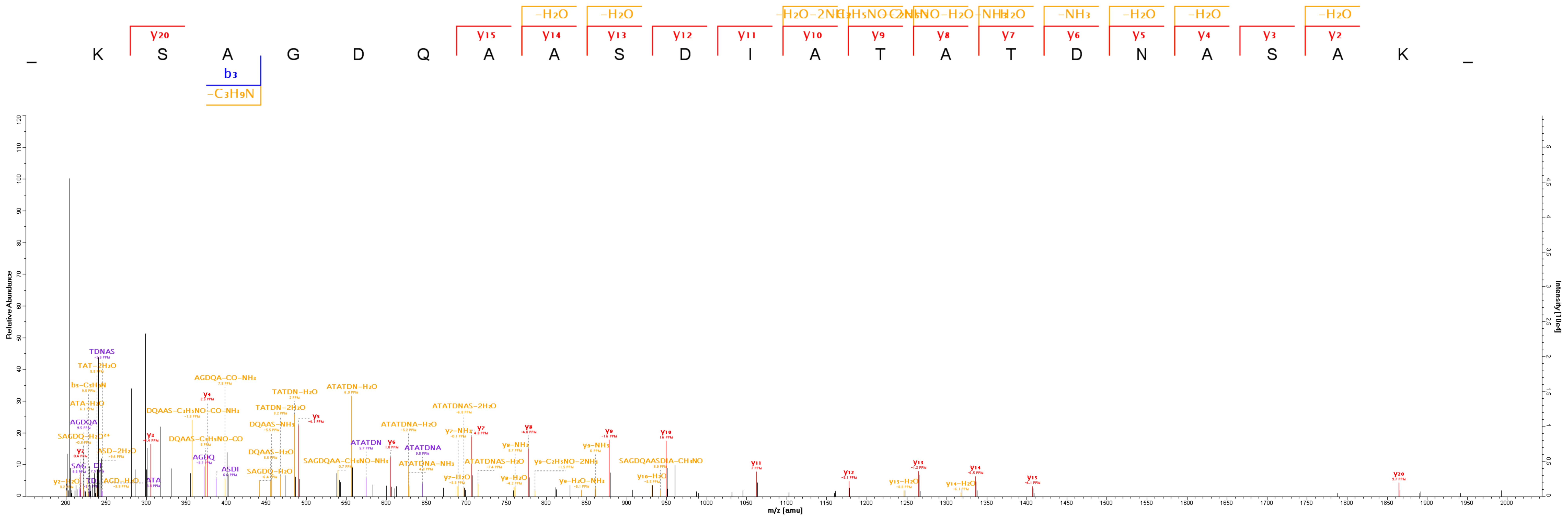
Uniprot number	Protein name	parent mass	charge	Precursor MH+	glycan mass	glycan composition	peptide mass	peptide	mass	mascot ion score	Page
B0VKNG6_ACIBS	Uncharacterized protein [ABSDF2966] [<i>Acinetobacter baumannii</i> (strain SDF)]	618.642	3	1853.93	884.3599	HexNAc2-Hex-316	969.573	³⁰² AKPASTPAVK ³¹¹	40	4	
B0VLI0_A_CIBS	B0VLI0_ACIBS Uncharacterized protein [ABSDF1485] [<i>Acinetobacter baumannii</i> (strain SDF)]	959.750	3	2877.26	884.311	HexNAc2-Hex-316	1992.95	⁴⁷ KSAGDQAASDIATATDNASAK ⁶⁷	69	5	
B0VLI0_A_CIBS	B0VLI0_ACIBS Uncharacterized protein [ABSDF1485] [<i>Acinetobacter baumannii</i> (strain SDF)]	807.028	3	2419.09	884.3576	HexNAc2-Hex-316	1534.73	⁵² QAASDIATATDNASAK ⁶⁷	80	6	
B0VLI0_A_CIBS	B0VLI0_ACIBS Uncharacterized protein [ABSDF1485] [<i>Acinetobacter baumannii</i> (strain SDF)]	917.398	3	2750.20	884.3674	HexNAc2-Hex-316	1865.84	⁴⁸ SAGDQAASDIATATDN(+1)ASAK ⁶⁷	35	7	
B0VLI0_A_CIBS	B0VLI0_ACIBS Uncharacterized protein [ABSDF1485] [<i>Acinetobacter baumannii</i> (strain SDF)]	821.680	3	2463.05	884.3599	HexNAc2-Hex-316	1578.69	⁴⁸ SAGDQAASDIATATDNA ⁶⁶	36	8	
B0VLI0_A_CIBS	B0VLI0_ACIBS Uncharacterized protein [ABSDF1485] [<i>Acinetobacter baumannii</i> (strain SDF)]	757.674	3	2271.03	406.1779	HexNAc2	1864.85	⁴⁸ SAGDQAASDIATATDNASAK ⁶⁷	99	9	
B0VLI0_A_CIBS	B0VLI0_ACIBS Uncharacterized protein [ABSDF1485] [<i>Acinetobacter baumannii</i> (strain SDF)]	917.396	3	2750.19	884.3586	HexNAc2-Hex-316	1865.84	⁴⁸ SAGDQ(+1)AASDIATATDNASAK ⁶⁷	79	10	
B0VLI0_A_CIBS	B0VLI0_ACIBS Uncharacterized protein [ABSDF1485] [<i>Acinetobacter baumannii</i> (strain SDF)]	906.417	4	3622.67	406.1858	HexNAc2	3216.49	⁴⁸ SAGDQAASDIATATDNASAKIDAATDHAADATAK ⁸¹	132	11	

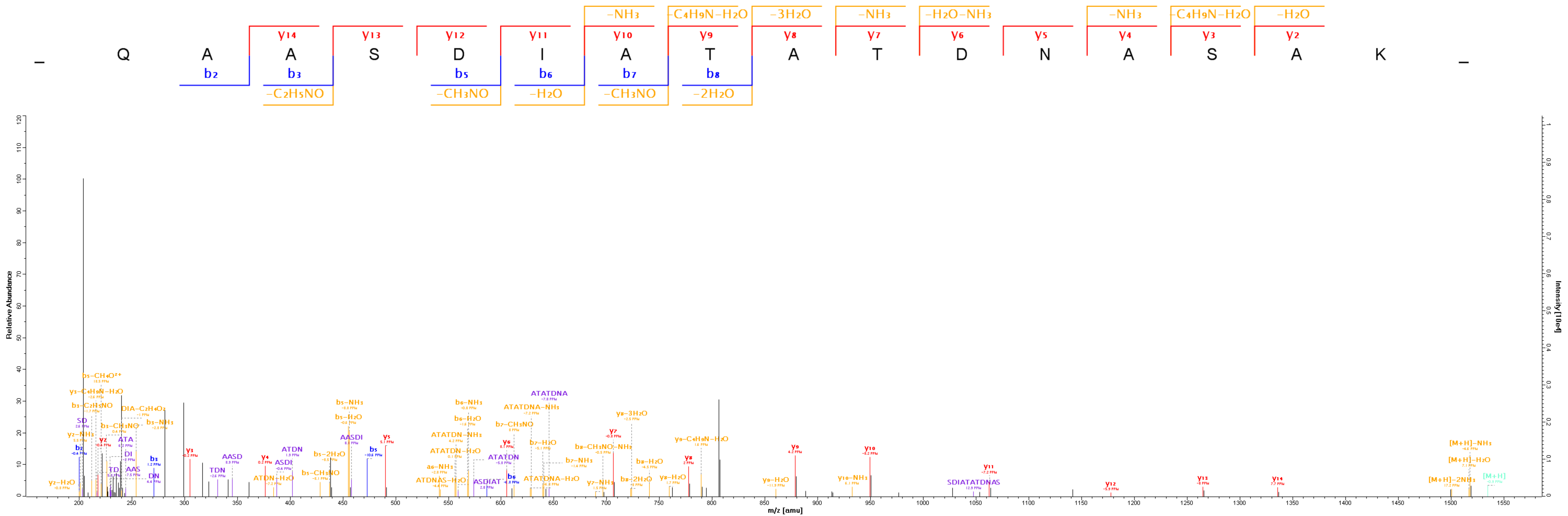
B0VLI0_A CIBS	B0VLI0_ACIBS Uncharacterized protein [ABSDF1485] [Acinetobacter baumannii (strain SDF)]	1036.467	4	4142.87	926.3854	HexNAc2- Hex-358	3216.49	⁴⁸ SAGDQAASDIATATDNASAKIDAATDHAADATAK ⁸¹	86	12
B0VRK6_ ACIBS	Uncharacterized protein [ABSDF2200] [Acinetobacter baumannii (strain SDF)]	797.371	3	2390.12	884.3623	HexNAc2- Hex-316	1505.76	¹⁸⁴ AASEPEQKVEYVR ¹⁹⁶	71	13
B0VSH8_ ACIBS	Uncharacterized protein [ABSDF0746] [Acinetobacter baumannii (strain SDF)]	637.973	3	1911.93	406.1839	HexNAc2	1505.74	⁴⁰ STAKDEQPASSASVK ⁵⁴	102	14
B0VV82_ ACIBS	Uncharacterized protein [ABSDF2905] [Acinetobacter baumannii (strain SDF)]	897.386	3	2690.17	1290.502	two glycans; 884 and 406	1399.64	⁶⁵ AAASETAAASEAAAAH ⁸⁰	81	15
B0VV82_ ACIBS	Uncharacterized protein [ABSDF2905] [Acinetobacter baumannii (strain SDF)]	873.707	3	2619.13	1290.521	two glycans; 884 and 406	1328.61	⁶⁶ AASETAAASEAAAAH ⁸⁰	72	16
B0VV82_ ACIBS	Uncharacterized protein [ABSDF2905] [Acinetobacter baumannii (strain SDF)]	887.709	3	2661.13	1332.534	two glycans; 926 and 406	1328.6	⁶⁶ AASETAAASEAAAAH ⁸⁰	67	17
B0VV82_ ACIBS	Uncharacterized protein [ABSDF2905] [Acinetobacter baumannii (strain SDF)]	781.697	3	2343.10	884.3551	HexNAc2- Hex-316	1458.74	²² SKKEEAPAAASEAVA ³⁶	83	18
B0VV82_ ACIBS	Uncharacterized protein [ABSDF2905] [Acinetobacter baumannii (strain SDF)]	795.703	3	2385.12	926.3746	HexNAc2- Hex-358	1458.74	²² SKKEEAPAAASEAVA ³⁶	67	19
B0VV82_ ACIBS	Uncharacterized protein [ABSDF2905] [Acinetobacter baumannii (strain SDF)]	669.663	3	2007.00	406.1806	HexNAc2	1600.82	²² SKKEEAPAAASEAVAAA ³⁸	32	20
B0VV82_ ACIBS	Uncharacterized protein [ABSDF2905] [Acinetobacter baumannii (strain SDF)]	843.059	3	2527.18	926.3658	HexNAc2- Hex-358	1600.82	²² SKKEEAPAAASEAVAAA ³⁸	61	21

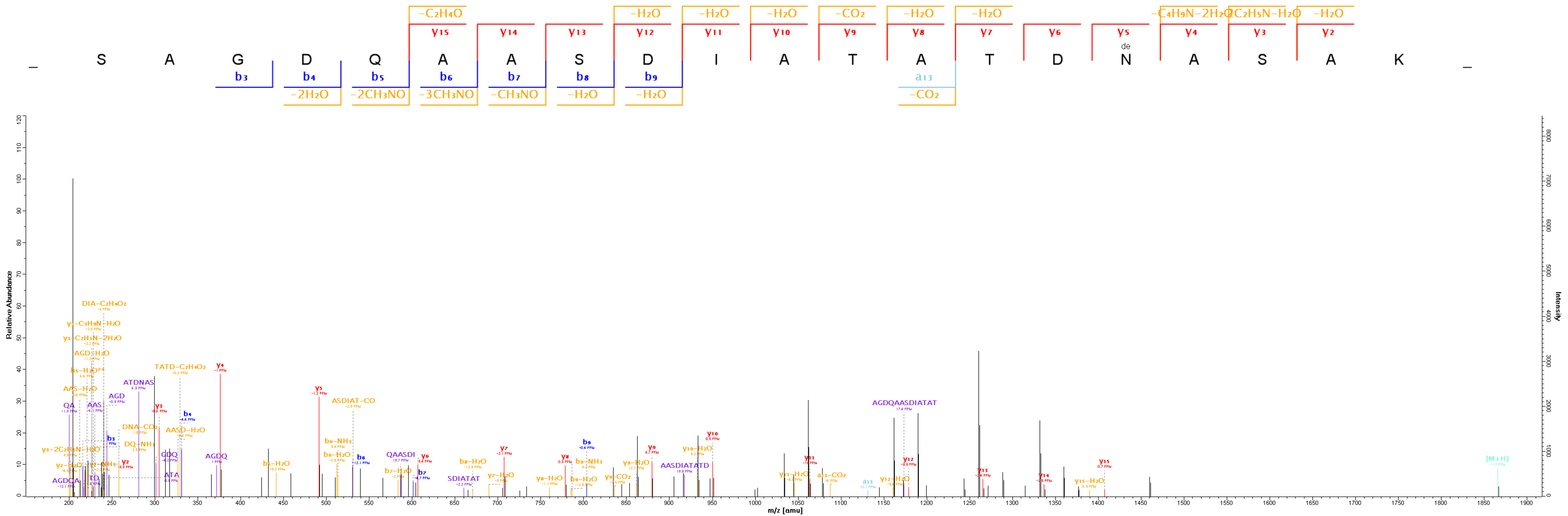
B0VV82_ ACIBS	Uncharacterized protein [ABSDF2905] [Acinetobacter baumannii (strain SDF)]	822.730	3	2466.20	406.1846	HexNAc2	2060.01	²² SKKEEAPAAASEAVAAASEATA ⁴³	65	22
B0VV82_ ACIBS	Uncharacterized protein [ABSDF2905] [Acinetobacter baumannii (strain SDF)]	1005.804	3	3015.42	884.3689	HexNAc2- Hex-316	2131.05	²² SKKEEAPAAASEAVAAASEATAA ⁴⁴	70	23
B0VV82_ ACIBS	Uncharacterized protein [ABSDF2905] [Acinetobacter baumannii (strain SDF)]	1019.807	3	3057.43	926.3788	HexNAc2- Hex-358	2131.05	²² SKKEEAPAAASEAVAAASEATAA ⁴⁴	81	24
B0VV82_ ACIBS	Uncharacterized protein [ABSDF2905] [Acinetobacter baumannii (strain SDF)]	870.085	3	2608.26	406.1747	HexNAc2	2202.09	²² SKKEEAPAAASEAVAAASEATAAA ⁴⁵	42	25
B0VV82_ ACIBS	Uncharacterized protein [ABSDF2905] [Acinetobacter baumannii (strain SDF)]	1043.482	3	3128.46	926.3667	HexNAc2- Hex-358	2202.09	²² SKKEEAPAAASEAVAAASEATAAA ⁴⁵	69	26
B0VV82_ ACIBS	Uncharacterized protein [ABSDF2905] [Acinetobacter baumannii (strain SDF)]	893.768	3	2679.31	406.1852	HexNAc2	2273.13	²² SKKEEAPAAASEAVAAASEATAAAA ⁴⁶	79	27
B0VV82_ ACIBS	Uncharacterized protein [ABSDF2905] [Acinetobacter baumannii (strain SDF)]	1053.156	3	3157.48	884.3503	HexNAc2- Hex-316	2273.13	²² SKKEEAPAAASEAVAAASEATAAAA ⁴⁶	88	28
B0VV82_ ACIBS	Uncharacterized protein [ABSDF2905] [Acinetobacter baumannii (strain SDF)]	1067.163	3	3199.50	926.3719	HexNAc2- Hex-358	2273.13	²² SKKEEAPAAASEAVAAASEATAAAA ⁴⁶	77	29

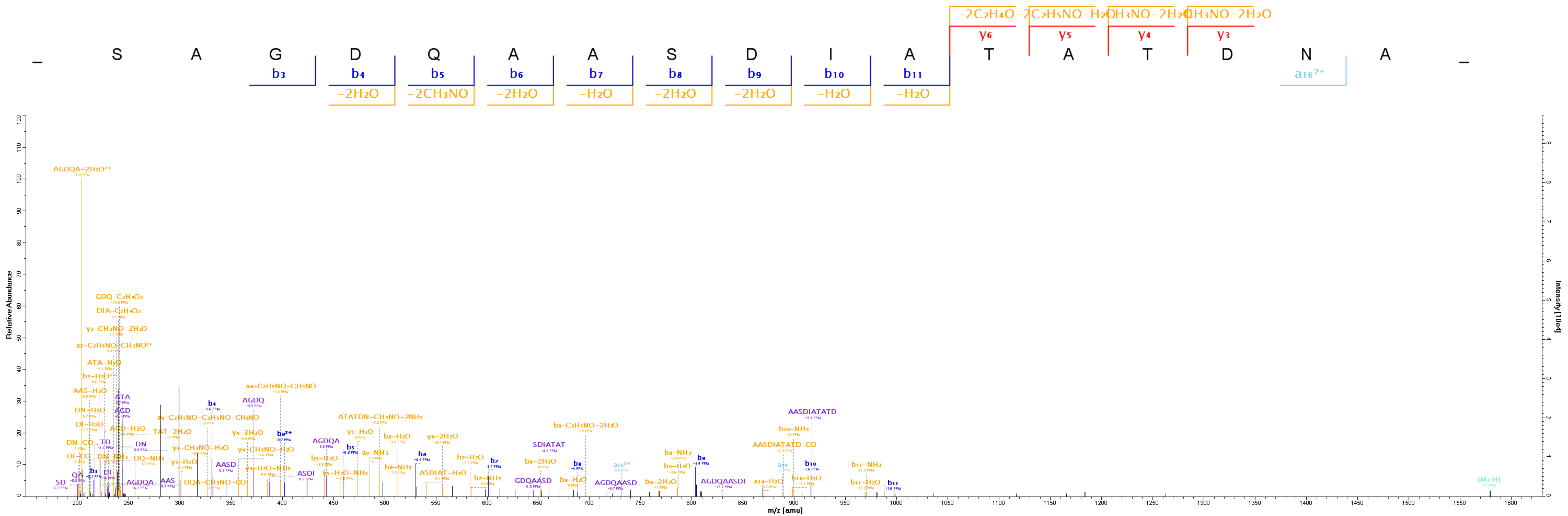
Supplementary Table 3: Identifications are labeled according to the corresponding Uniprot accession number and protein name of *A. baumannii* strain SDF the parent m/z, charge state, deconvoluted mass, glycan mass, glycan composition, peptide mass, peptide sequence and mascot ion score are provided for each identified glycopeptide. All identified glycopeptide HCD spectra are provided and are available on the designated pages.

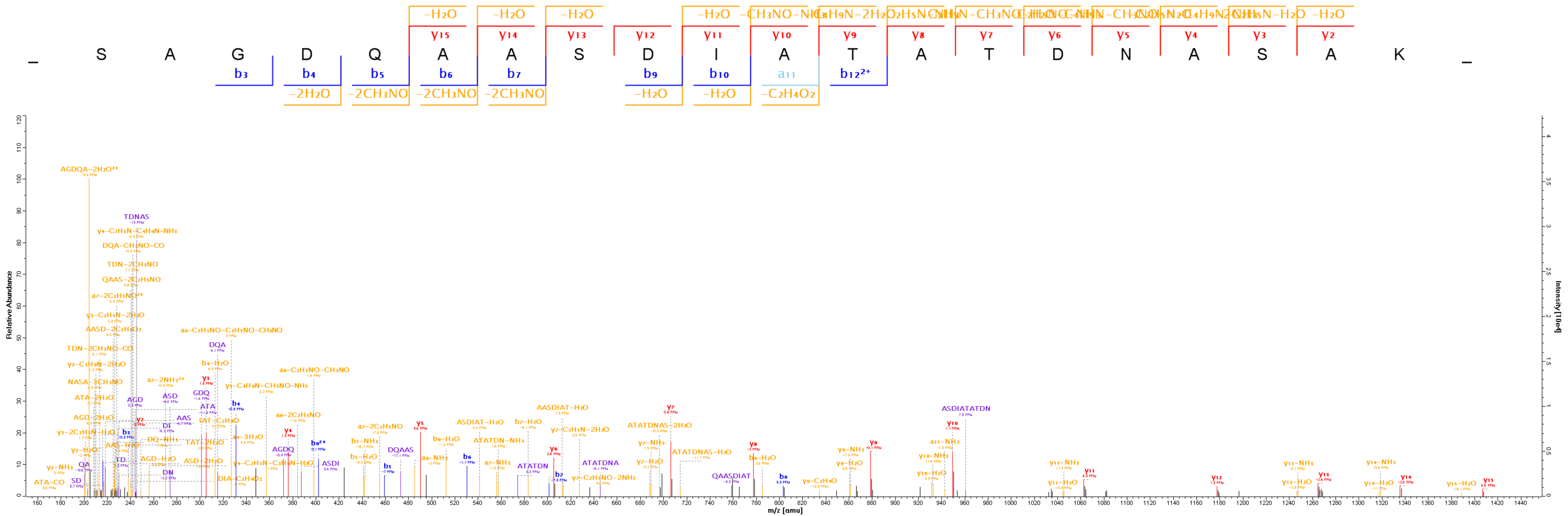


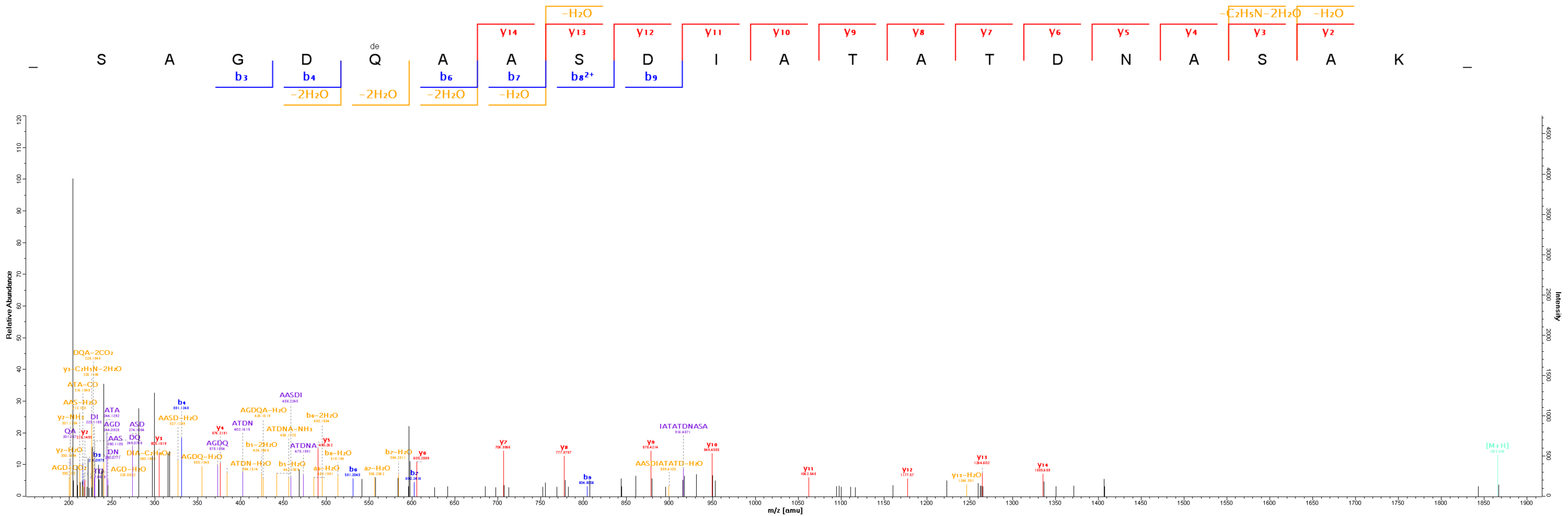


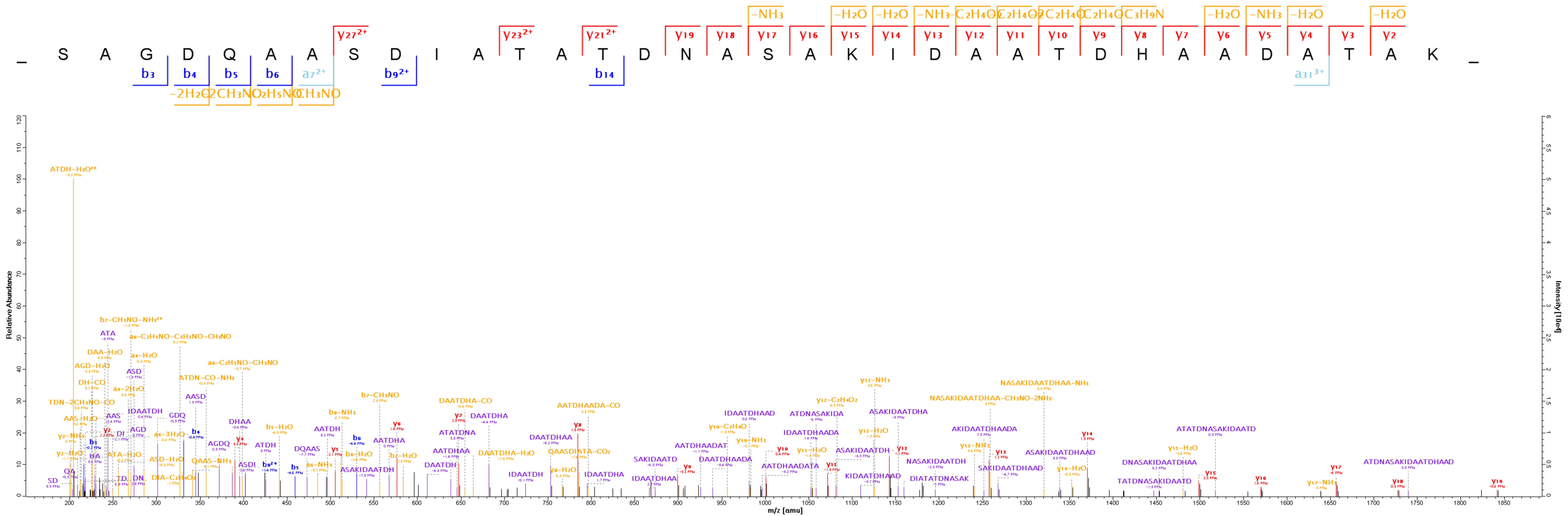


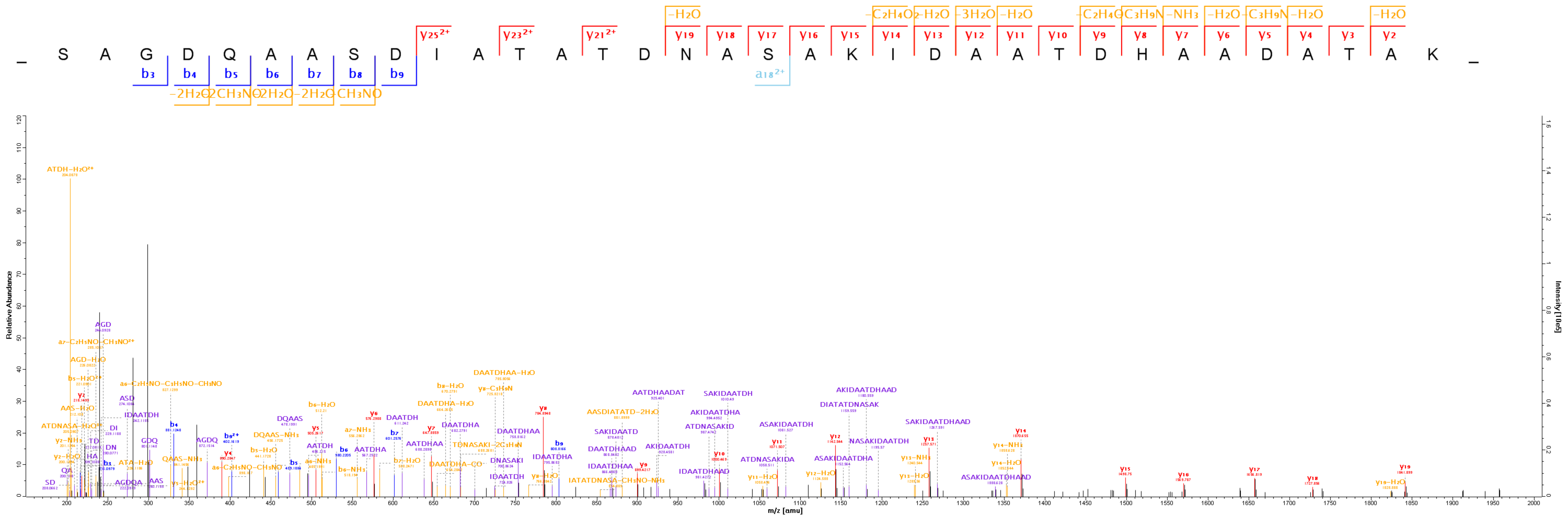


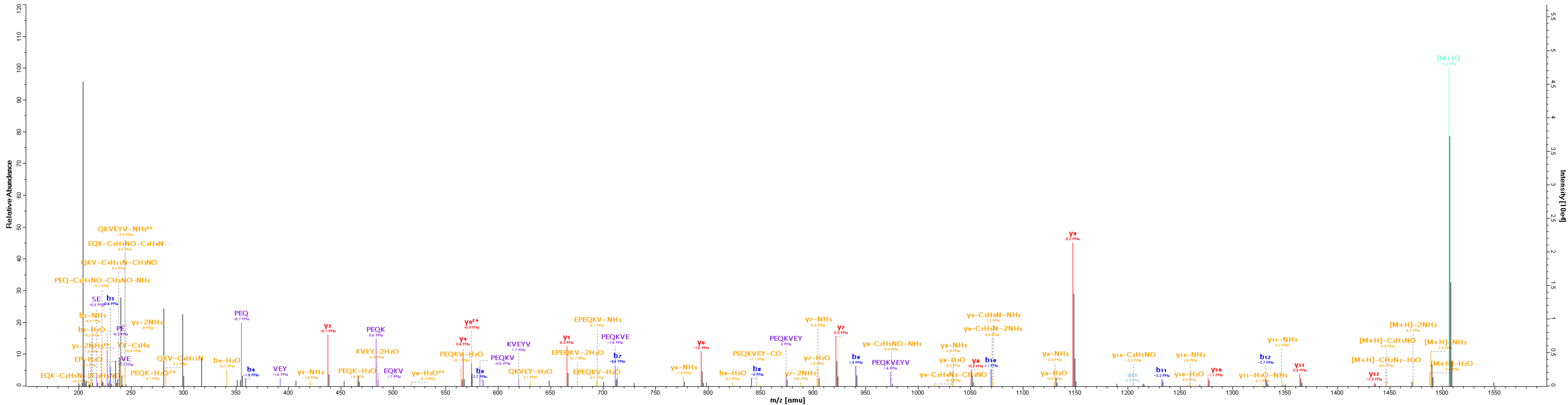
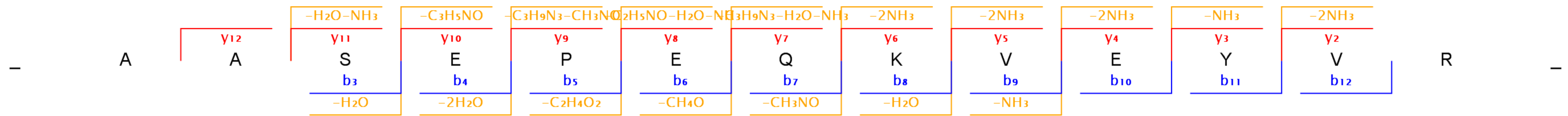


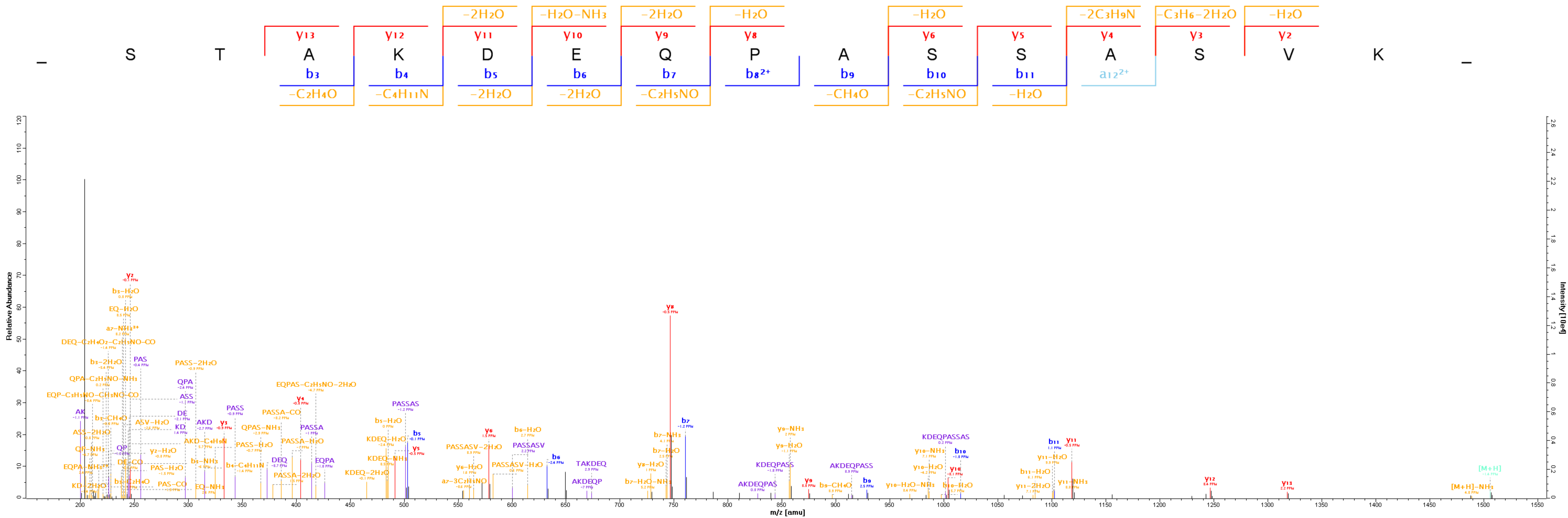


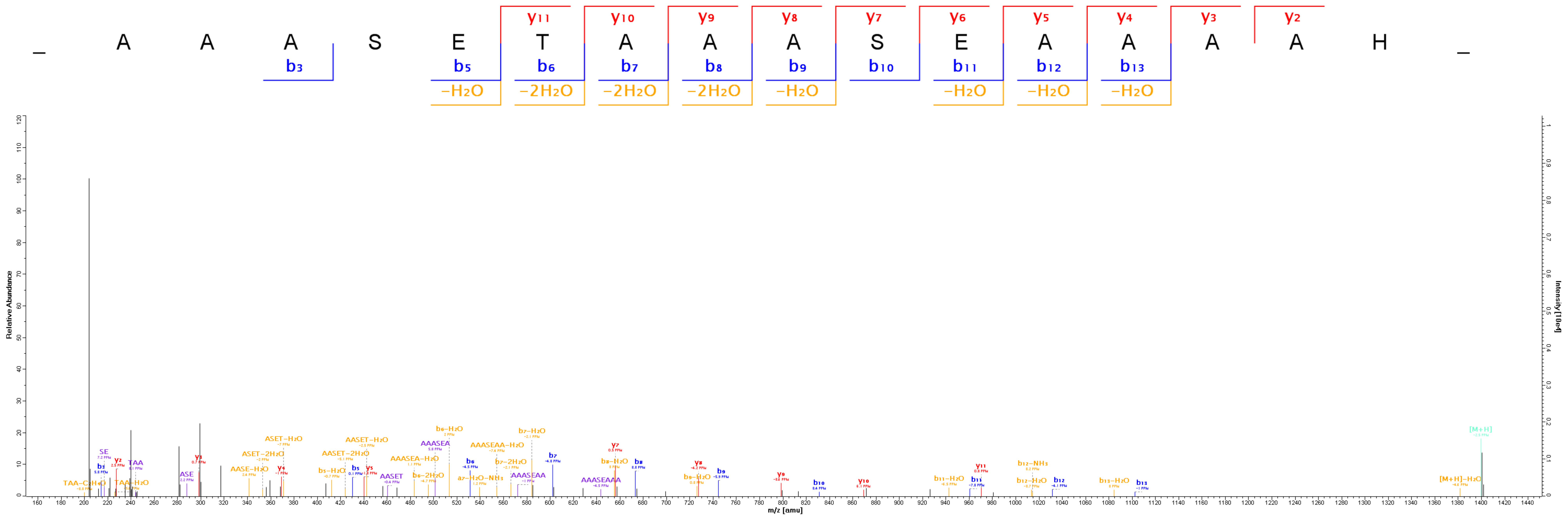


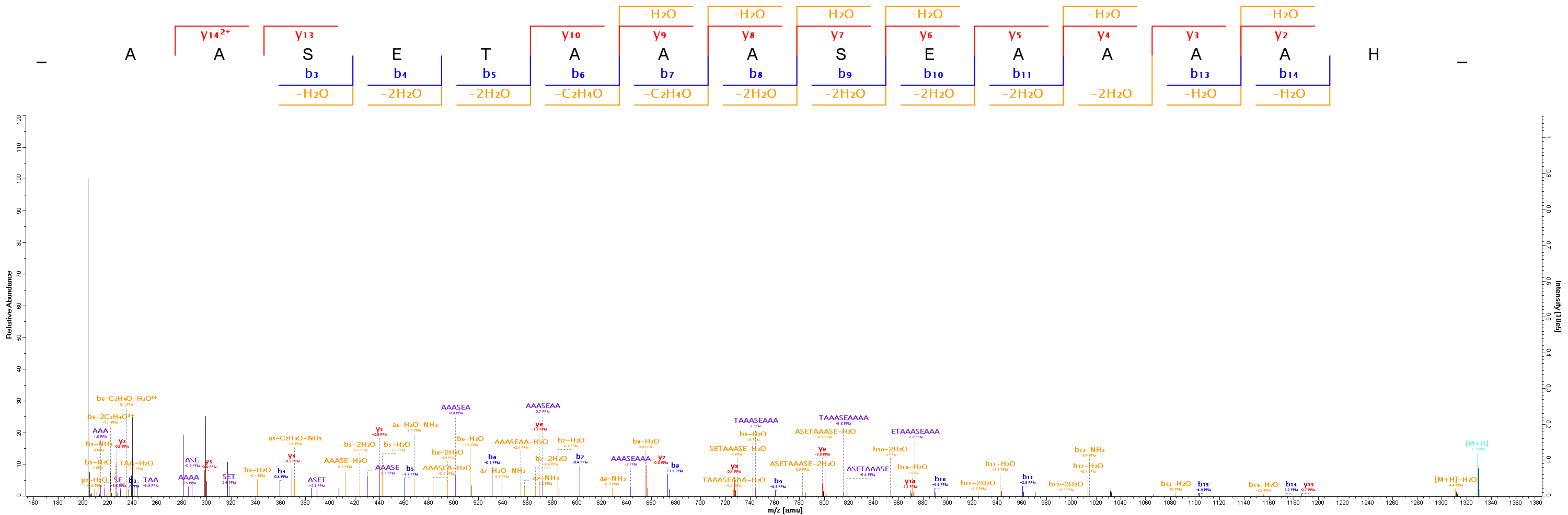


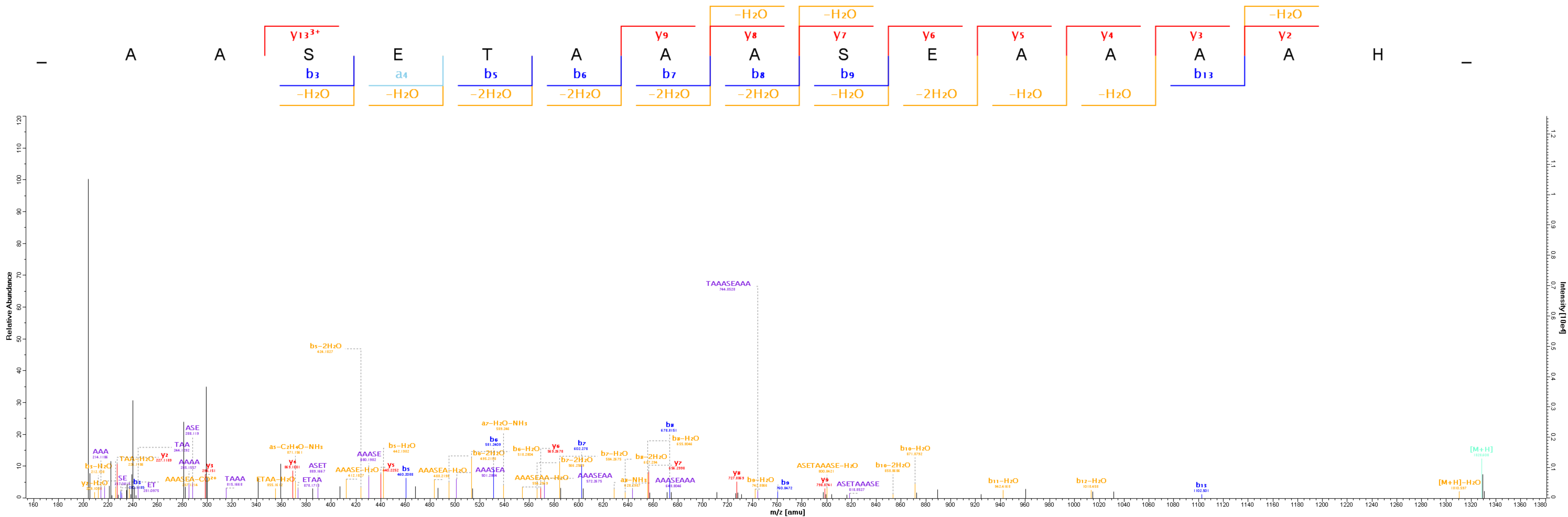


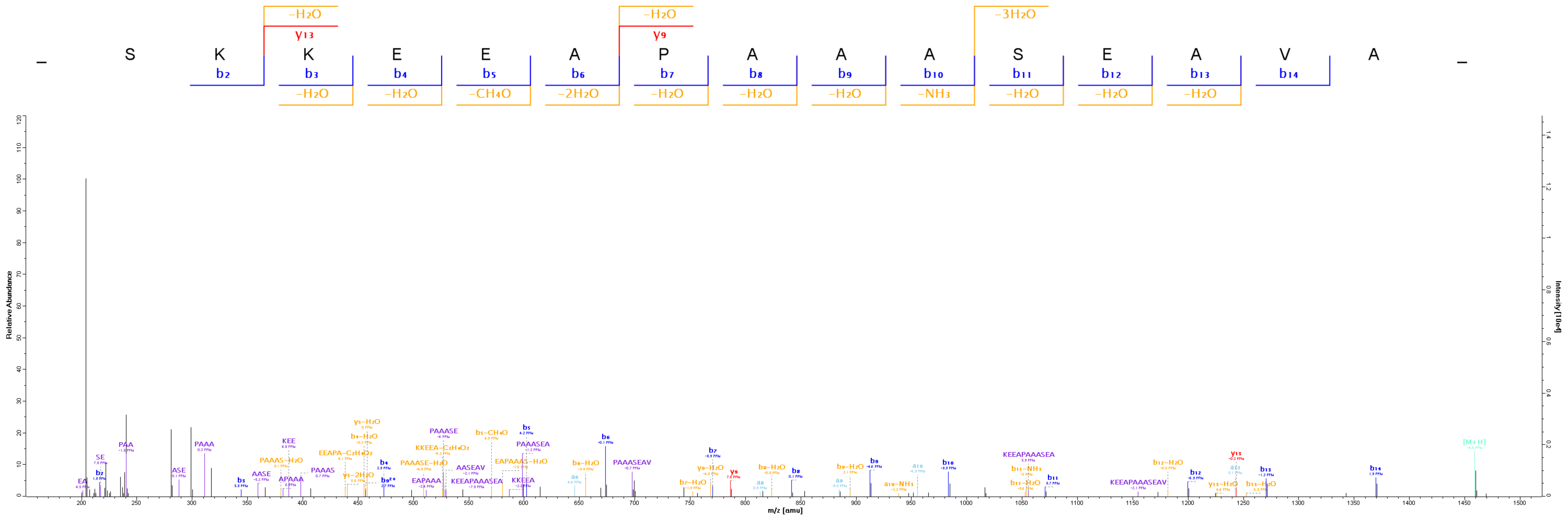


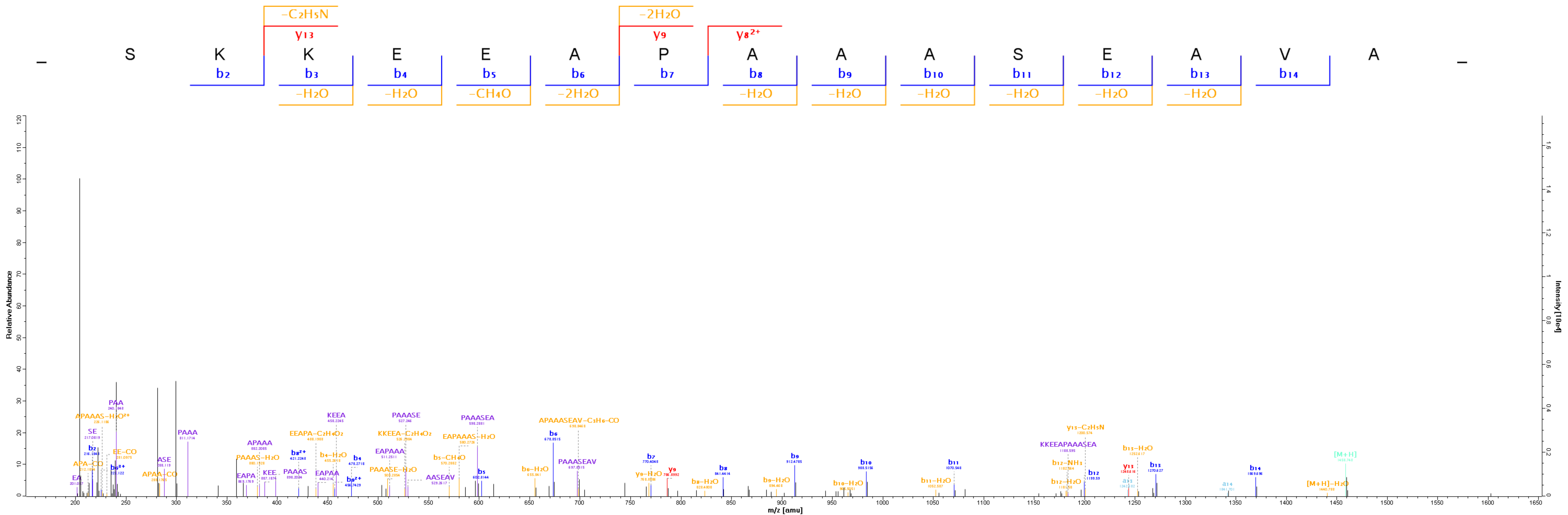


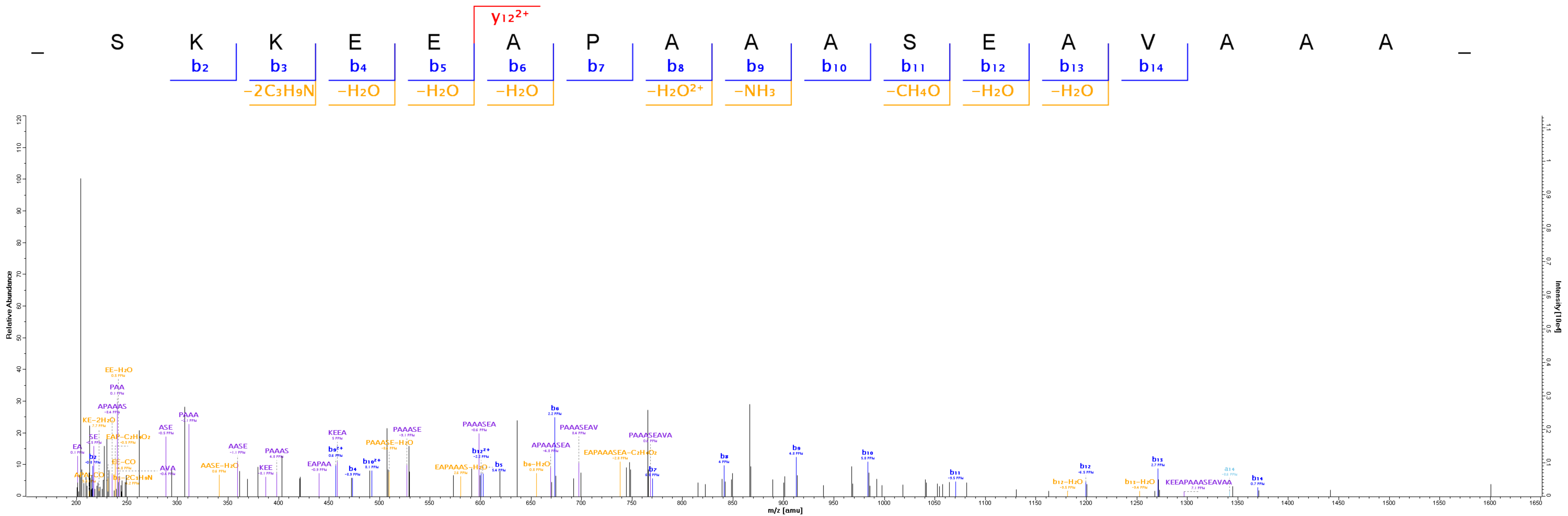


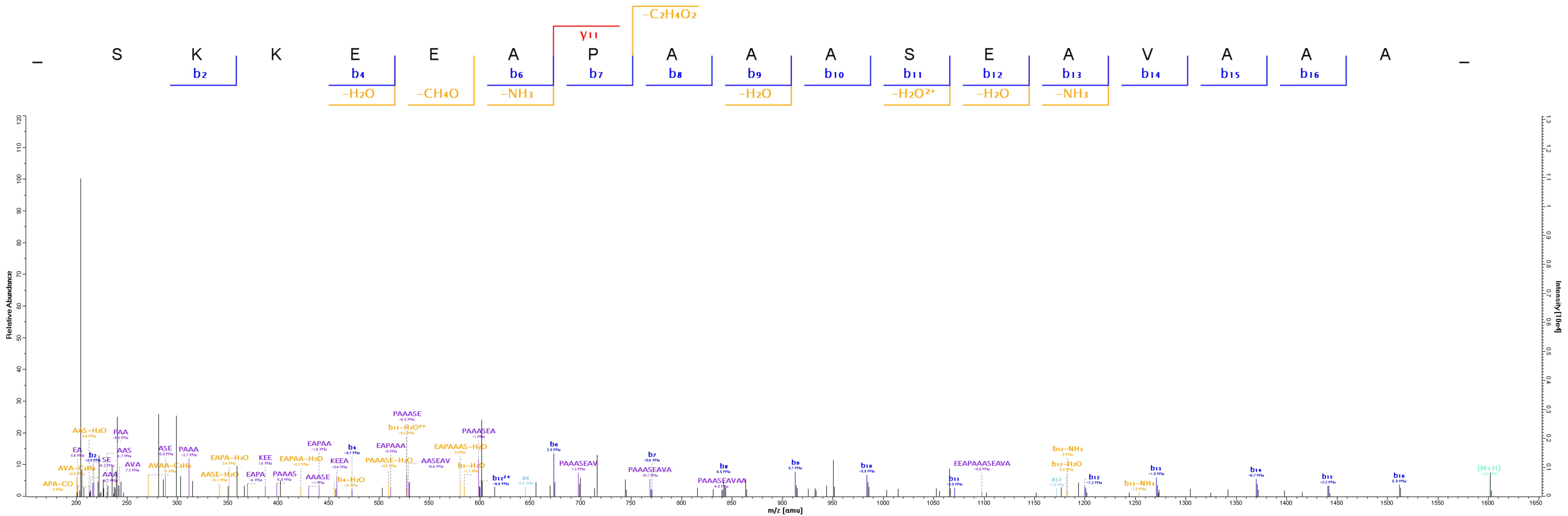


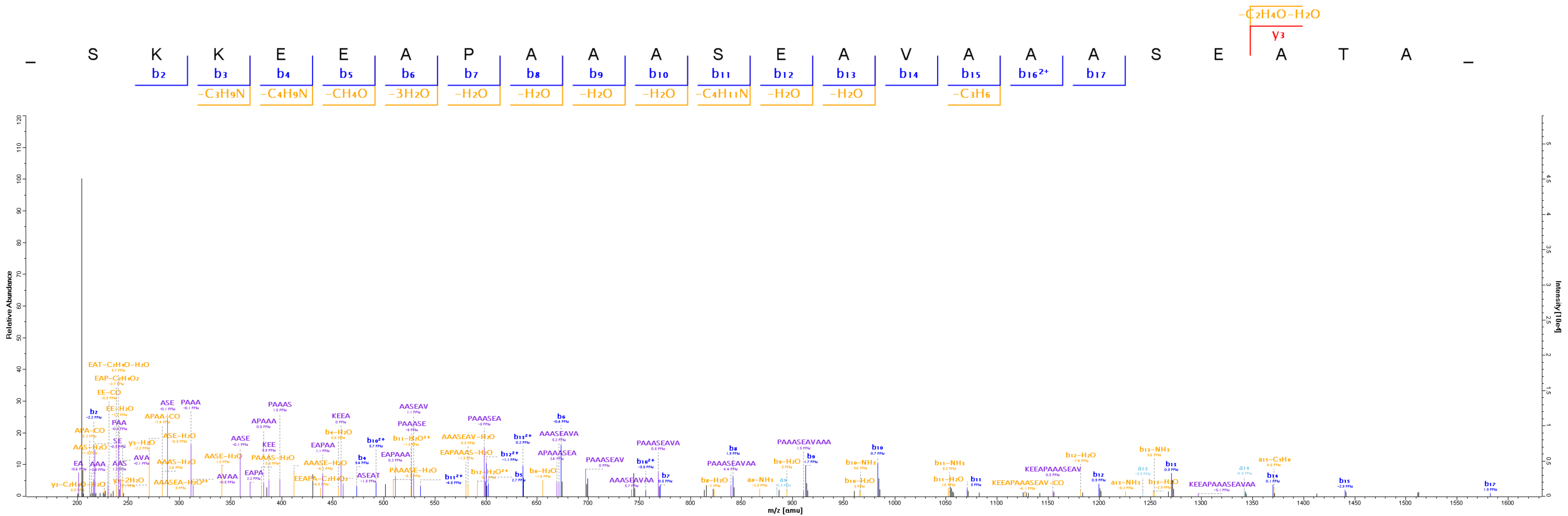


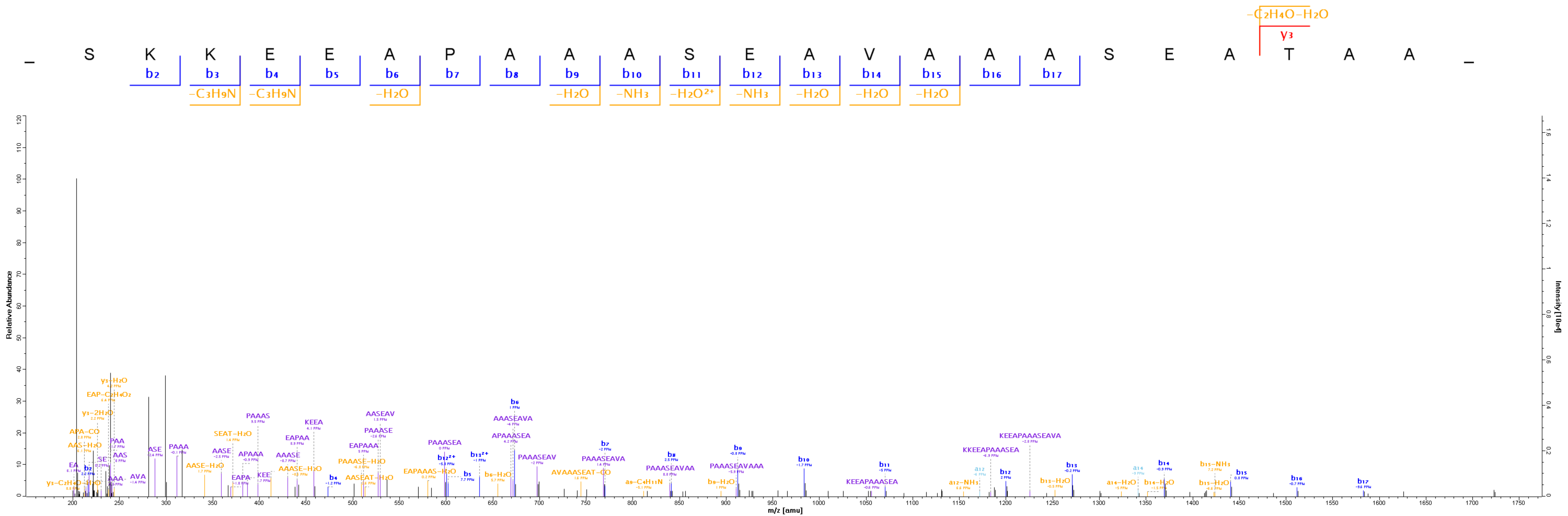


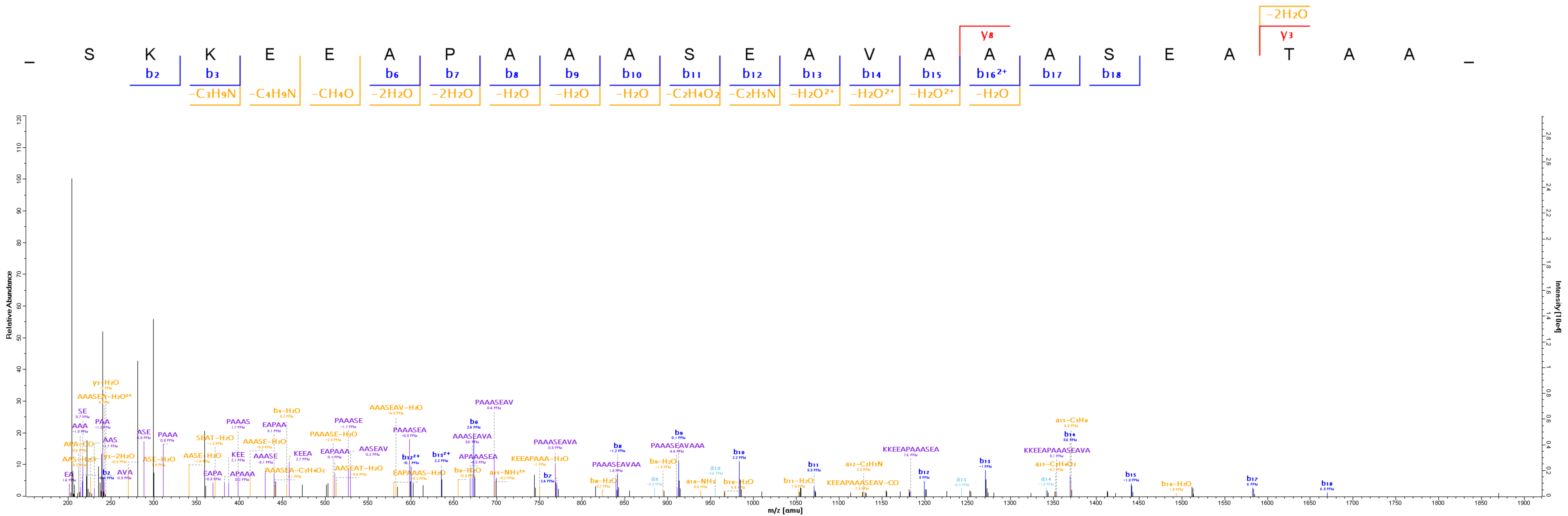












S K K E E A P A A A S E A V A A A S E A T A A A

b₂ b₄ b₆ b₈ b₉ b₁₀ b₁₁ b₁₂ b₁₃ b₁₄ b₁₅²⁺ b₁₆

-H₂O -H₂O -2C₂H₅N -H₂O

