

Supplementary Table 5: HCD identified *Acinetobacter baumannii* (strain Arg 2) glycopeptides

Uniprot accession number	protein name	Precursor m/z [Da]	Precursor MH+ [Da]	Precursor Charge	glycan mass	composition	peptide mass	peptide	Mascot Ion Score	Page
N8U2Y5_A CIBA	Uncharacterized protein [F979_02908] [<i>Acinetobacter baumannii</i> NIPH 146]	1058.48	2115.95	2	843.31	HexNAc-Hex ₂ -316	1272.64	⁴⁹ AASEVAASEAAPAK ⁶²	62	6
N8U2Y5_A CIBA	Uncharacterized protein [F979_02908] [<i>Acinetobacter baumannii</i> NIPH 146]	1160.02	2319.03	2	1046.39	HexNAc ₂ -Hex ₂ -316	1272.64	⁴⁹ AASEVAASEAAPAK ⁶²	74	7
N8U2Y5_A CIBA	Uncharacterized protein [F979_02908] [<i>Acinetobacter baumannii</i> NIPH 146]	987.09	2959.26	3	1686.62	double glycan; HexNAc-Hex ₂ -316	1272.64	⁴⁹ AASEVAASEAAPAK ⁶²	45	8
N8Y212_A CIBA	Uncharacterized protein [F961_00584] [<i>Acinetobacter baumannii</i> NIPH 60]	919.07	2755.20	3	843.31	HexNAc-Hex ₂ -316	1911.89	⁸⁶ AEDPNADSGIAASEPTAPAK ¹⁰⁵	83	9
A3M265_A CIBT	Uncharacterized protein [A1S_0556] [<i>Acinetobacter baumannii</i> (strain ATCC 17978 / NCDC KC 755)]	906.94	1812.88	2	843.31	HexNAc-Hex ₂ -316	969.57	³⁰² AKPASTPAVK ³¹¹	28	10
F0QMC7_ ACIBD	Uncharacterized protein [ABTW07_2818] [<i>Acinetobacter baumannii</i> (strain TCDC-AB0715)]	1406.68	4218.04	3	843.31	HexNAc-Hex ₂ -316	3374.73	²² ASTTEQPLNPNKVSAPVEDPIDPLAVDAASTVK ⁵⁴	62	11
N8U458_A CIBA	Uncharacterized protein [F979_02578] [<i>Acinetobacter baumannii</i> NIPH 146]	920.69	3679.73	4	843.31	HexNAc-Hex ₂ -316	2836.42	²⁵ ETPKEEEQDKIETAVSEPQPQKPAK ⁴⁹	22	12
N8U2Y5_A CIBA	Uncharacterized protein [F979_02908] [<i>Acinetobacter baumannii</i> NIPH 146]	1105.86	3315.57	3	843.31	HexNAc-Hex ₂ -316	2472.26	³⁸ FVEVPVANTDKAASEVAASEAAPAK ⁶²	79	13

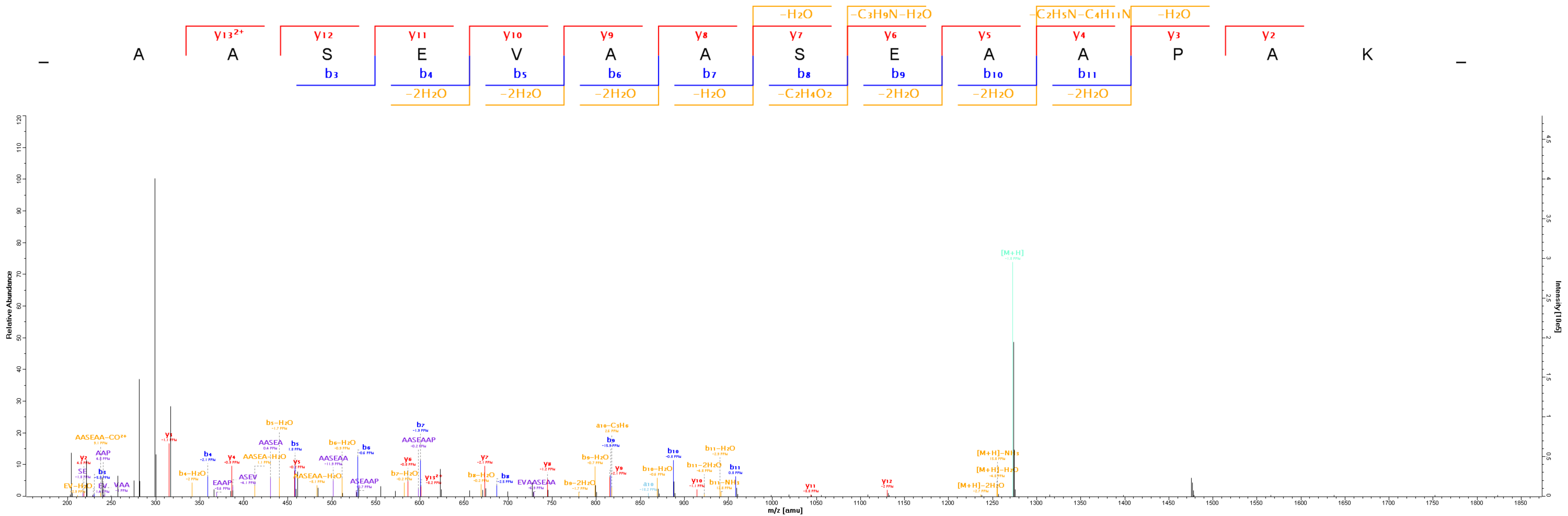
N8U2Y5_A CIBA	Uncharacterized protein [F979_02908] [Acinetobacter baumannii NIPH 146]	1173.55	3518.65	3	1046.39	HexNAc ₂ -Hex ₂ - 316	2472.26	³⁸ FVEVPVANTDKAASEVAASEAAPAK ⁶²	78	14
N8U2Y5_A CIBA	Uncharacterized protein [F979_02908] [Acinetobacter baumannii NIPH 146]	1386.97	4158.88	3	1686.62	double glycan; HexNAc-Hex ₂ - 316	2472.26	³⁸ FVEVPVANTDKAASEVAASEAAPAK ⁶²	66	15
A7FB63_A CIBT	Uncharacterized protein [A1S_3626] [Acinetobacter baumannii (strain ATCC 17978 / NCDC KC 755)]	850.70	2550.09	3	843.31	HexNAc-Hex ₂ - 316	1706.78	⁵⁰ GDQAASDIATATDNASAK ⁶⁷	102	16
E8PEJ1_A CIB1	Uncharacterized protein [ABK1_3438] [Acinetobacter baumannii (strain 1656-2)]	1278.61	3833.80	3	843.30	HexNAc-Hex ₂ - 316	2990.50	²¹⁴ IDESLLMSAPASSTLNTQPKPTSTNSATK ²⁴²	45	17
N8U458_A CIBA	Uncharacterized protein [F979_02578] [Acinetobacter baumannii NIPH 146]	822.73	2466.19	3	843.31	HexNAc-Hex ₂ - 316	1622.87	³⁵ IETAVSEPQPQKPAK ⁴⁹	47	18
A3M9I2_A CIBT	Putative membrane protein [A1S_3179] [Acinetobacter baumannii (strain ATCC 17978 / NCDC KC 755)]	1246.34	4982.35	4	843.30	HexNAc-Hex ₂ - 316	4139.04	⁴⁸ IIQQQAQASKPQINSQAASSVTPQTQVANDMADG	22	19
F0QMC7_ ACIBD	Uncharacterized protein [ABTW07_2818] [Acinetobacter baumannii (strain TCDC-AB0715)]	1022.50	3065.50	3	843.31	HexNAc-Hex ₂ - 316	2222.19	³³ KVSAPVEDPIDPLAVDAASTVK ⁵⁴	59	20
A7FB95_A CIBT	Uncharacterized protein [A1S_3658] [Acinetobacter baumannii (strain ATCC 17978 / NCDC KC 755)]	597.71	1194.42	2	203.08	HexNAc	991.34	²⁸ NDGM(+16)HEASD ⁴²	49	21

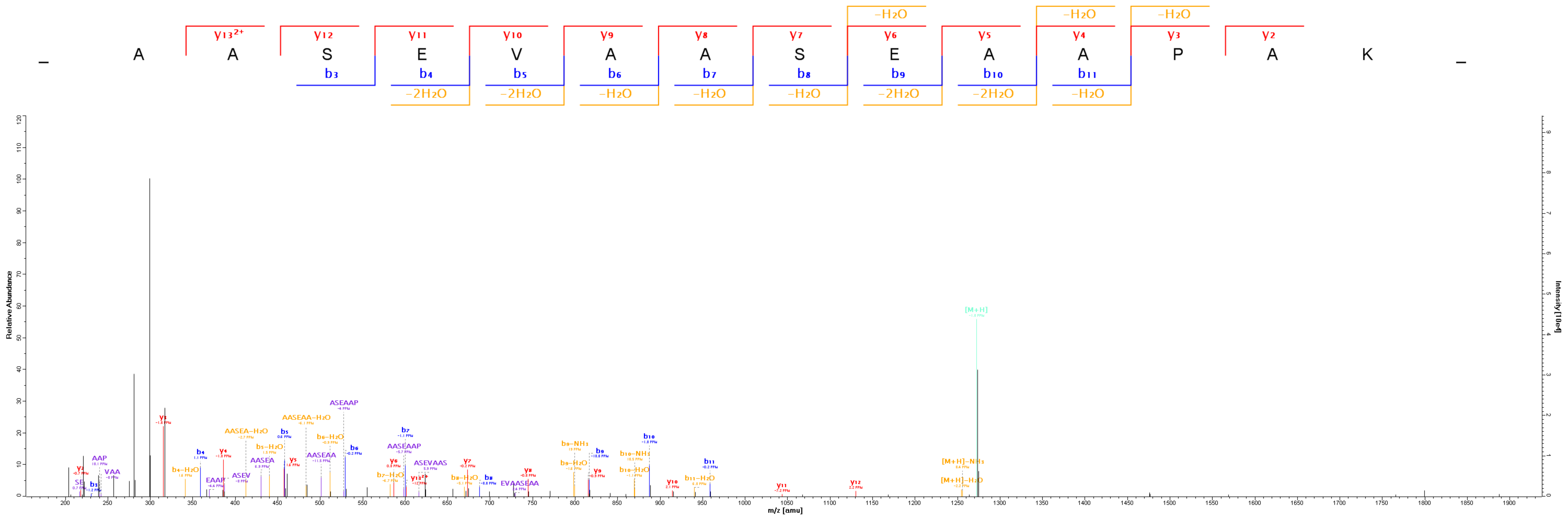
A7FB95_A CIBT	Uncharacterized protein [A1S_3658] [Acinetobacter baumannii (strain ATCC 17978 / NCDC KC 755)]	720.62	2159.86	3	203.08	HexNAc	1956.78	²⁸ NDGMHEASDPATSHDMNK ⁴⁵	85	22
A7FB95_A CIBT	Uncharacterized protein [A1S_3658] [Acinetobacter baumannii (strain ATCC 17978 / NCDC KC 755)]	880.02	2638.04	3	681.26	HexNAc-Hex- 316	1956.78	²⁸ NDGMHEASDPATSHDMNK ⁴⁵	56	23
A7FB95_A CIBT	Uncharacterized protein [A1S_3658] [Acinetobacter baumannii (strain ATCC 17978 / NCDC KC 755)]	939.36	2816.08	3	843.30	HexNAc-Hex ₂ - 316	1972.78	²⁸ NDGM(+16)HEASDPATSHDMNK ⁴⁵	76	24
A7FB95_A CIBT	Uncharacterized protein [A1S_3658] [Acinetobacter baumannii (strain ATCC 17978 / NCDC KC 755)]	1400.55	2800.09	2	843.31	HexNAc-Hex ₂ - 316	1956.78	²⁸ NDGMHEASDPATSHDMNK ⁴⁵	102	25
A7FB95_A CIBT	Uncharacterized protein [A1S_3658] [Acinetobacter baumannii (strain ATCC 17978 / NCDC KC 755)]	947.71	2841.12	3	884.34	HexNAc-Hex- HexNAc-316	1956.78	²⁸ NDGMHEASDPATSHDMNK ⁴⁵	73	26
A7FB95_A CIBT	Uncharacterized protein [A1S_3658] [Acinetobacter baumannii (strain ATCC 17978 / NCDC KC 755)]	934.36	2801.07	3	843.31	HexNAc-Hex ₂ - 316	1957.77	²⁸ N(+1)DGMHEASDPATSHDMNK ⁴⁵	78	27
A7FB95_A CIBT	Uncharacterized protein [A1S_3658] [Acinetobacter baumannii (strain ATCC 17978 / NCDC KC 755)]	944.70	2832.08	3	843.31	HexNAc-Hex ₂ - 316	1988.77	²⁸ NDGM(+16)HEASDPATSHDM(+16)NK ⁴⁵	58	28
K9BT20_A CIBA	L,D-transpeptidase catalytic domain protein [ACINWC487_2700] [Acinetobacter baumannii WC-487]	1220.55	2440.09	2	843.30	HexNAc-Hex ₂ - 316	1596.79	⁸⁹ PNADSGIAASEPTAPAK ¹⁰⁵	86	29

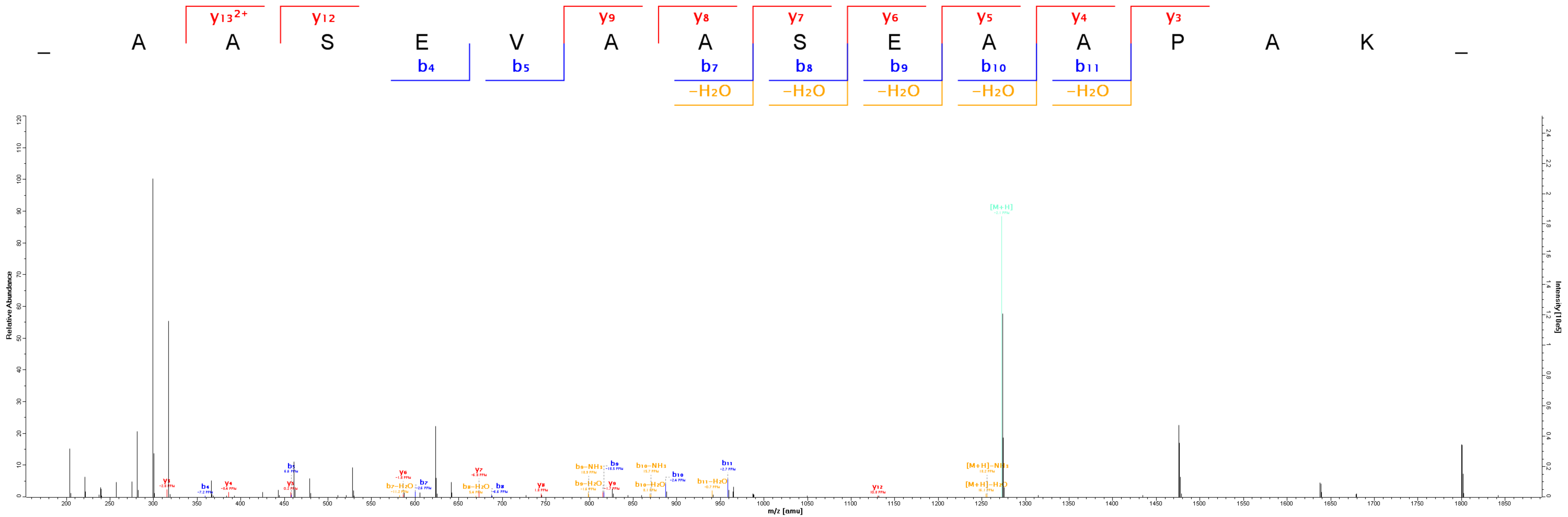
K9BT20_A CIBA	L,D-transpeptidase catalytic domain protein [ACINWC487_2700] [Acinetobacter baumannii WC-487]	1220.55	2440.10	2	843.31	HexNAc-Hex ₂ - 316	1596.79	⁸⁹ PNADSGIAASEPTAPAK ¹⁰⁵	108	30
A7FB63_A CIBT	Uncharacterized protein [A1S_3626] [Acinetobacter baumannii (strain ATCC 17978 / NCDC KC 755)]	1189.52	2378.04	2	843.31	HexNAc-Hex ₂ - 316	1534.73	⁵² QAASDIATATDNASAK ⁶⁷	73	31
J5IPS4_A CIBA	Putative lipoprotein [ACINNAV18_3709] [Acinetobacter baumannii Naval-18]	863.10	2587.29	3	843.31	HexNAc-Hex ₂ - 316	1743.99	¹¹⁰ RPQPLVNAPVASQAK ¹²⁶	44	32
A7FB63_A CIBT	Uncharacterized protein [A1S_3626] [Acinetobacter baumannii (strain ATCC 17978 / NCDC KC 755)]	894.06	2680.17	3	815.31	HexNAc-Hex- 450	1864.85	⁴⁸ SAGNEAASDIATATDNASAK ⁶⁷	56	33
A7FB63_A CIBT	Uncharacterized protein [A1S_3626] [Acinetobacter baumannii (strain ATCC 17978 / NCDC KC 755)]	1354.58	2708.16	2	843.31	HexNAc-Hex ₂ - 316	1864.85	⁴⁸ SAGNEAASDIATATDNASAK ⁶⁷	99	34
A7FB63_A CIBT	Uncharacterized protein [A1S_3626] [Acinetobacter baumannii (strain ATCC 17978 / NCDC KC 755)]	917.07	2749.20	3	884.34	HexNAc-Hex- HexNAc-316	1864.85	⁴⁸ SAGNEAASDIATATDNASAK ⁶⁷	77	35
A7FB63_A CIBT	Uncharacterized protein [A1S_3626] [Acinetobacter baumannii (strain ATCC 17978 / NCDC KC 755)]	1355.07	2709.14	2	843.31	HexNAc-Hex ₂ - 316	1865.84	⁴⁸ SAGNEAASDIATATDN(+1)ASAK ⁶⁷	97	36
A7FB63_A CIBT	Uncharacterized protein [A1S_3626] [Acinetobacter baumannii (strain ATCC 17978 / NCDC KC 755)]	1010.93	2020.84	2	843.31	HexNAc-Hex ₂ - 316	1177.53	⁴⁸ SAGNEAASDIATA ⁶⁰	42	37

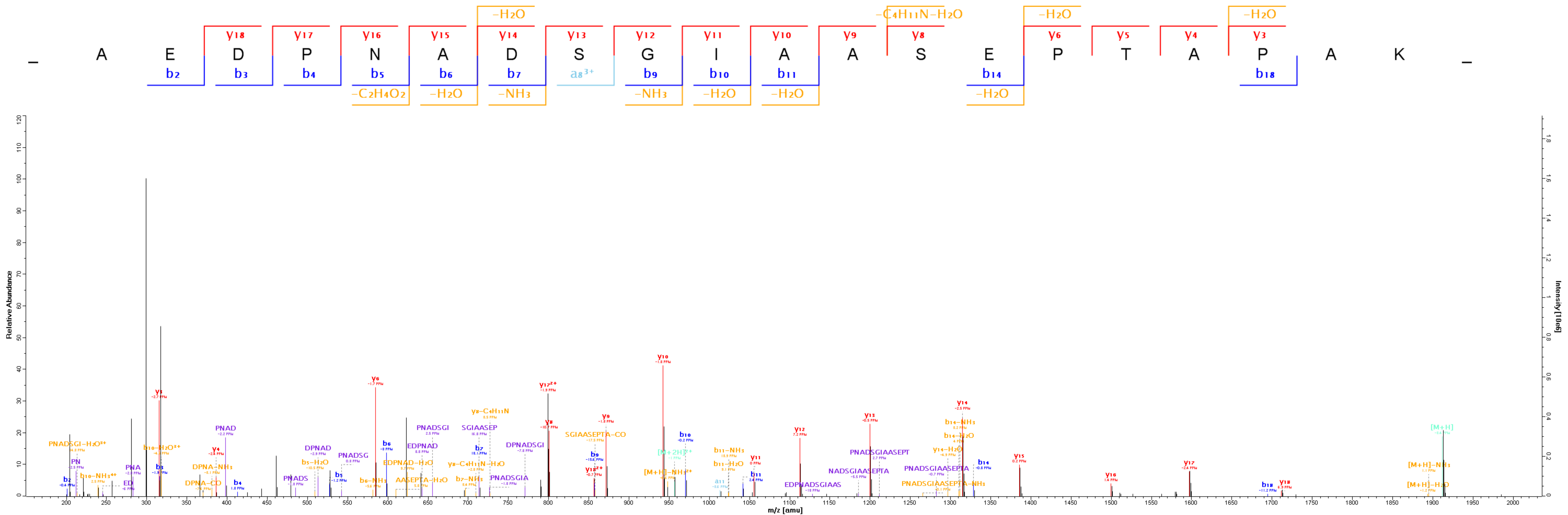
A7FB63_A CIBT	Uncharacterized protein [A1S_3626] [Acinetobacter baumannii (strain ATCC 17978 / NCDC KC 755)]	1034.47	2067.93	2	203.08	HexNAc	1864.85	⁴⁸ SAGNEAASDIATATDNASAK ⁶⁷	55	38
A7FB63_A CIBT	Uncharacterized protein [A1S_3626] [Acinetobacter baumannii (strain ATCC 17978 / NCDC KC 755)]	798.02	2392.04	3	527.18	HexNAc-Hex ₂	1864.85	⁴⁸ SAGNEAASDIATATDNASAK ⁶⁷	72	39
A7FB63_A CIBT	Uncharacterized protein [A1S_3626] [Acinetobacter baumannii (strain ATCC 17978 / NCDC KC 755)]	1273.56	2546.11	2	681.26	HexNAc-Hex- 316	1864.85	⁴⁸ SAGNEAASDIATATDNASAK ⁶⁷	71	40
A7FB63_A CIBT	Uncharacterized protein [A1S_3626] [Acinetobacter baumannii (strain ATCC 17978 / NCDC KC 755)]	863.05	2587.13	3	722.28	HexNAc ₂ -316	1864.85	⁴⁸ SAGNEAASDIATATDNASAK ⁶⁷	91	41
F0QNY6_A CIBD	Uncharacterized protein [ABTW07_0589] [Acinetobacter baumannii (strain TCDC-AB0715)]	1032.45	3095.35	3	843.31	HexNAc-Hex ₂ - 316	2252.04	¹¹⁵ TEASVAAATEQQDSFDAQVQR ¹³⁵	84	42

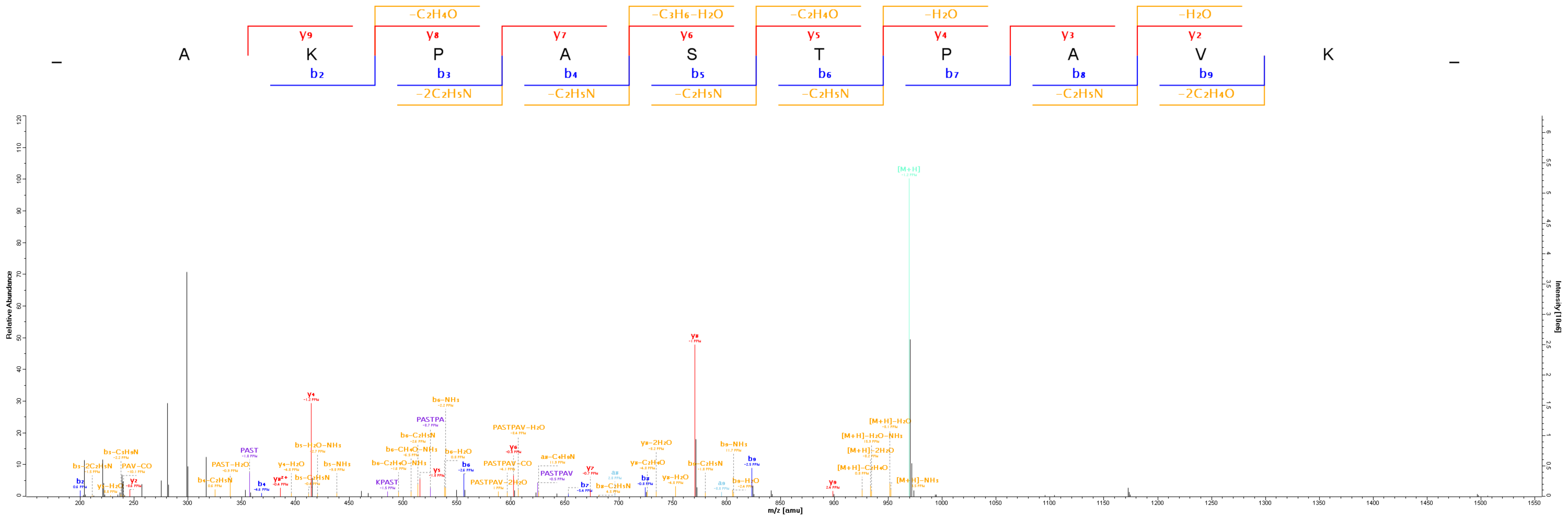
Supplementary table 5: Identifications are labeled according to the corresponding Uniprot accession number and protein name. The parent m/z, charge state, deconvoluted mass, glycan mass, glycan composition, peptide mass, peptide sequence and mascot ion score are provided for each identified glycopeptide. All identified glycopeptide HCD spectra are provided and are available on the designated pages.

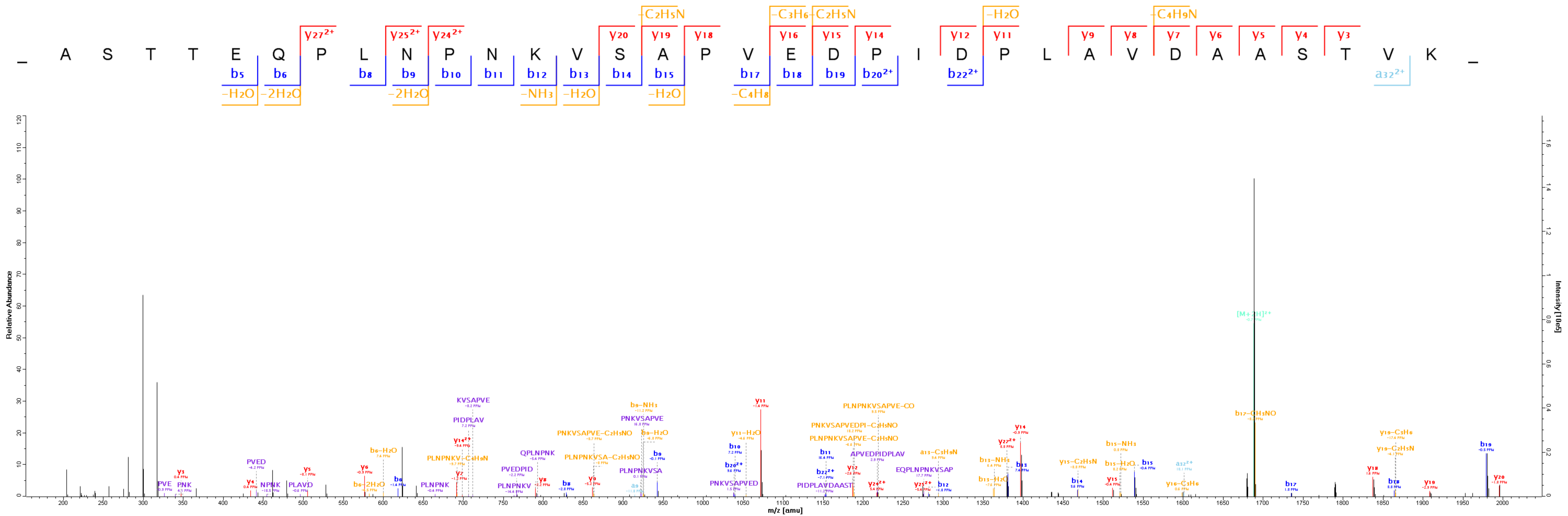


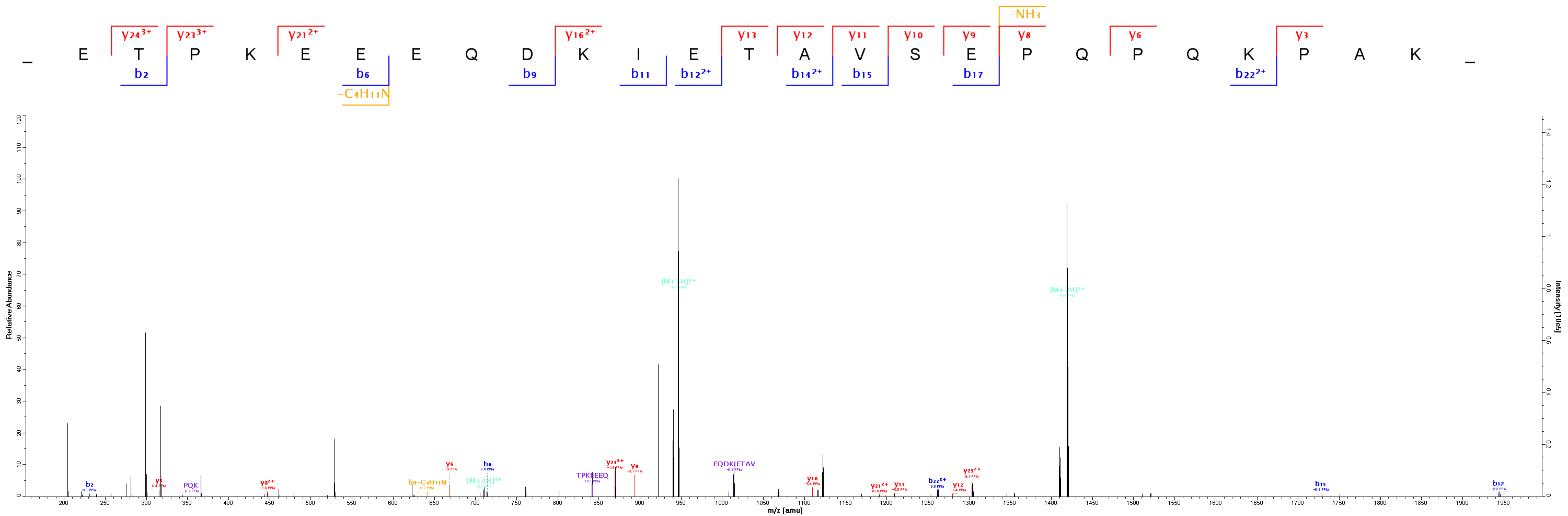


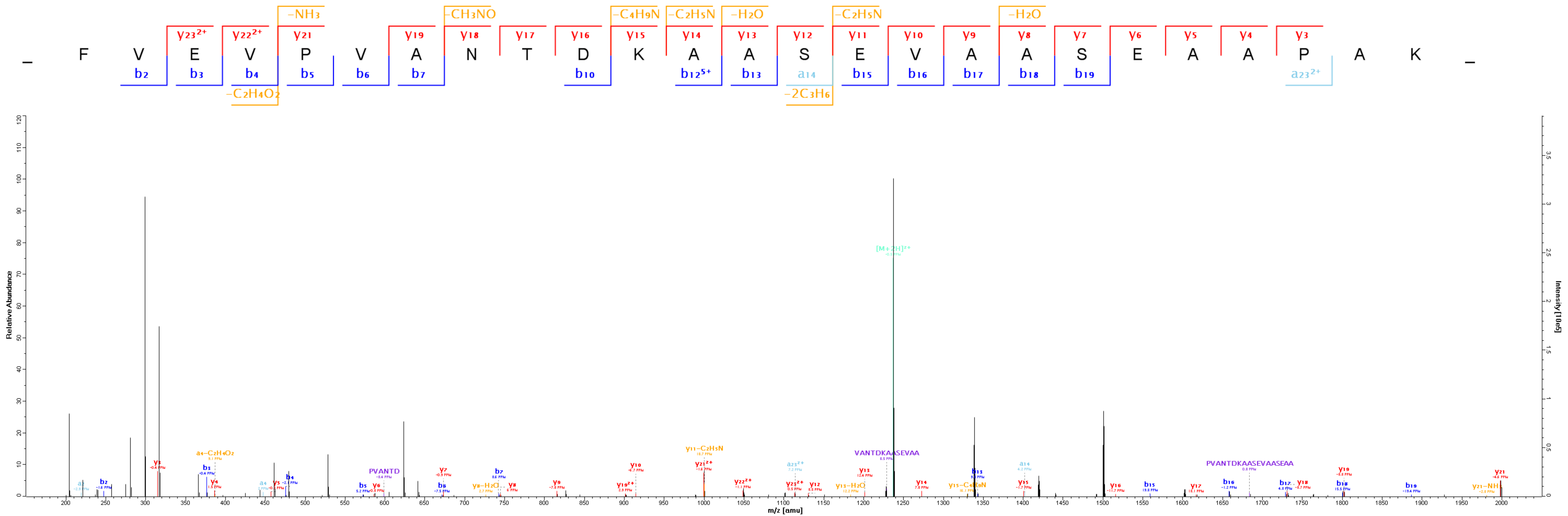


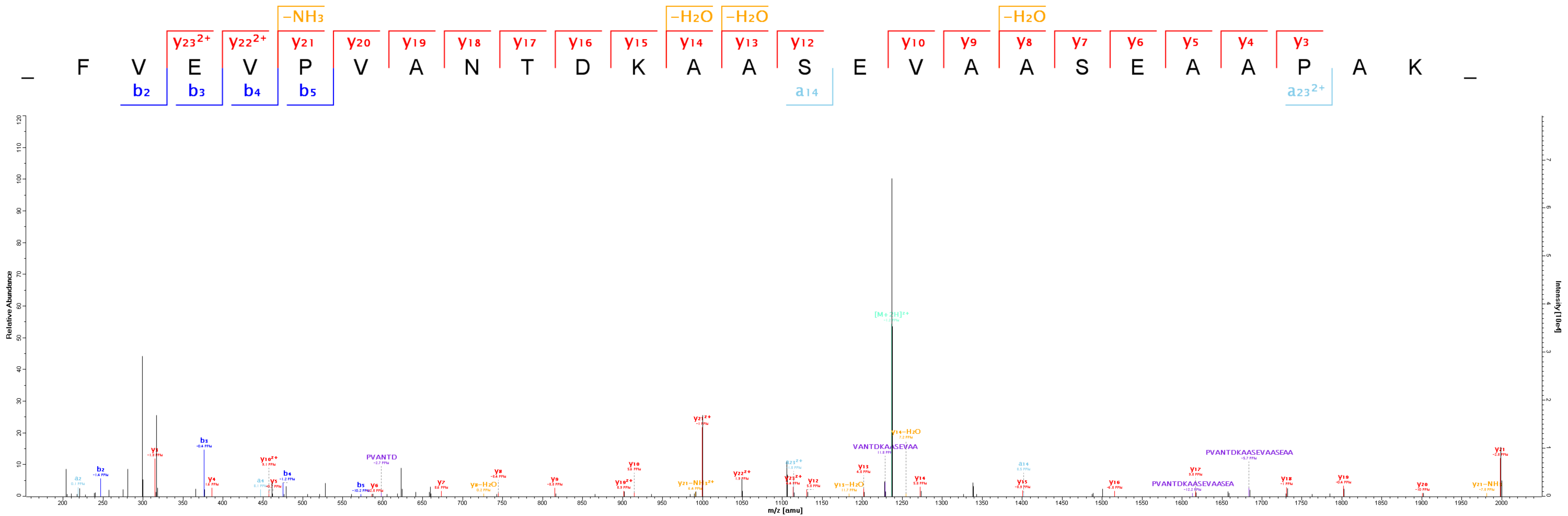


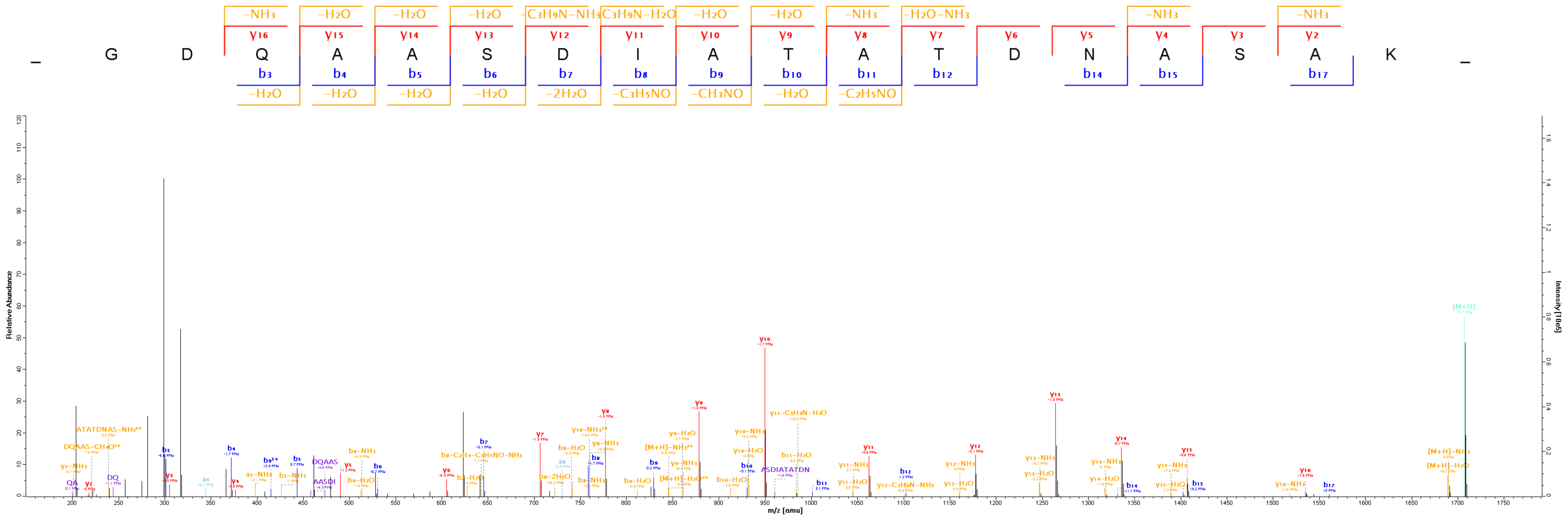


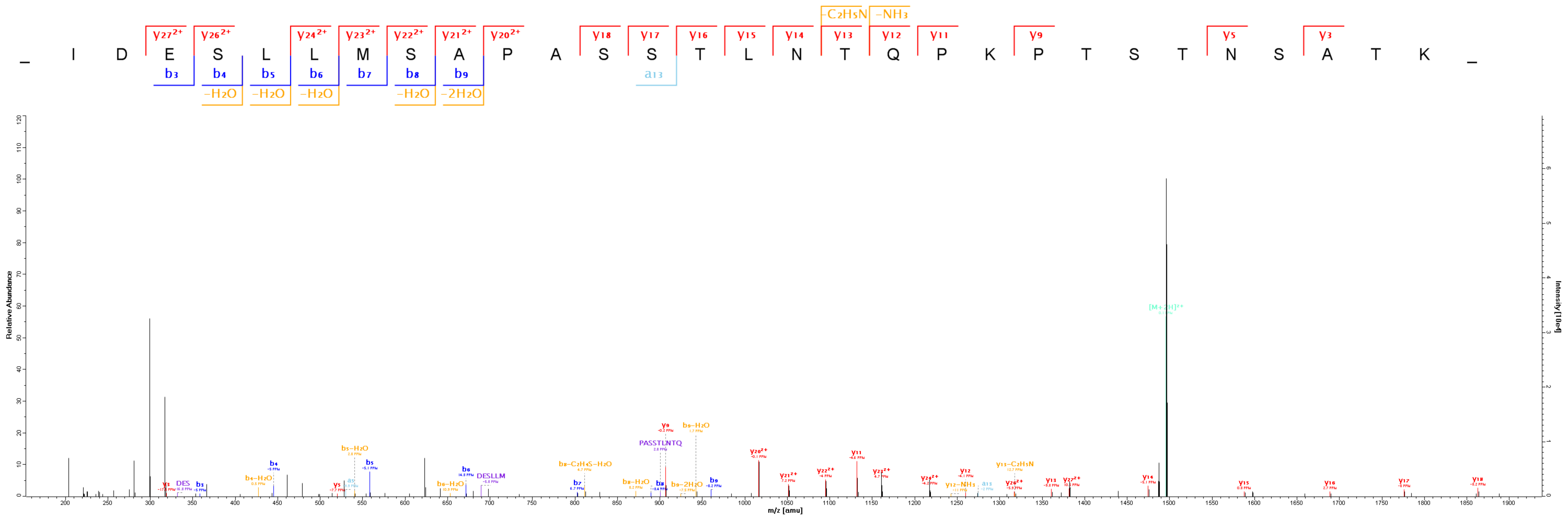


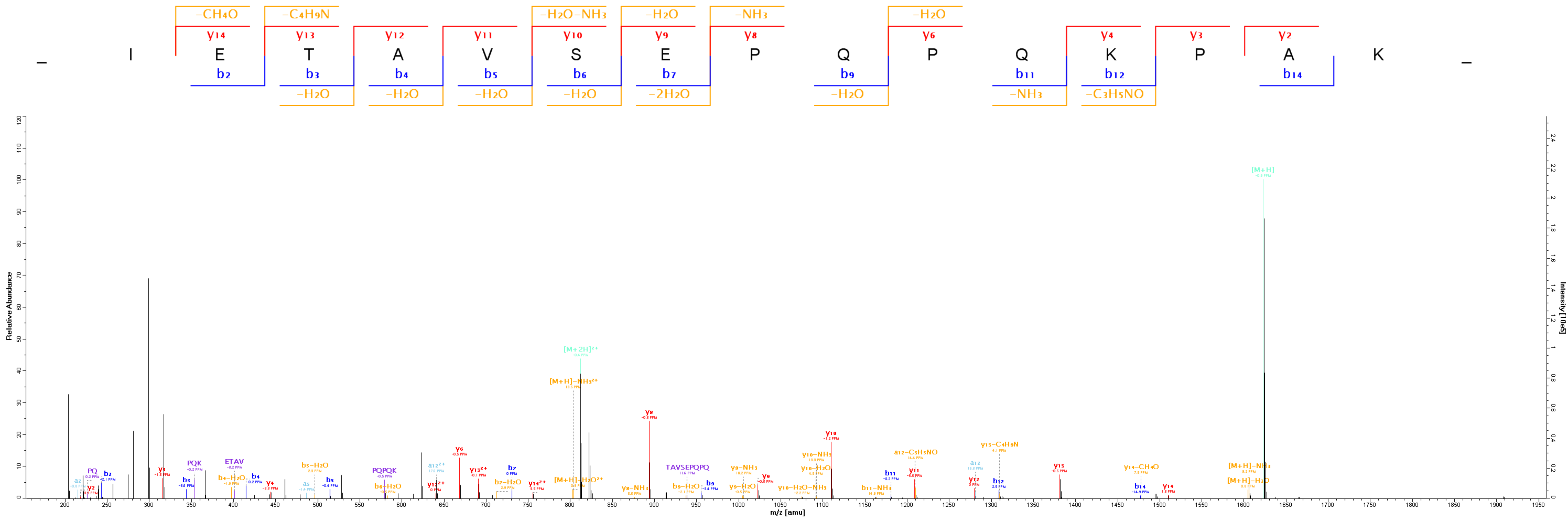


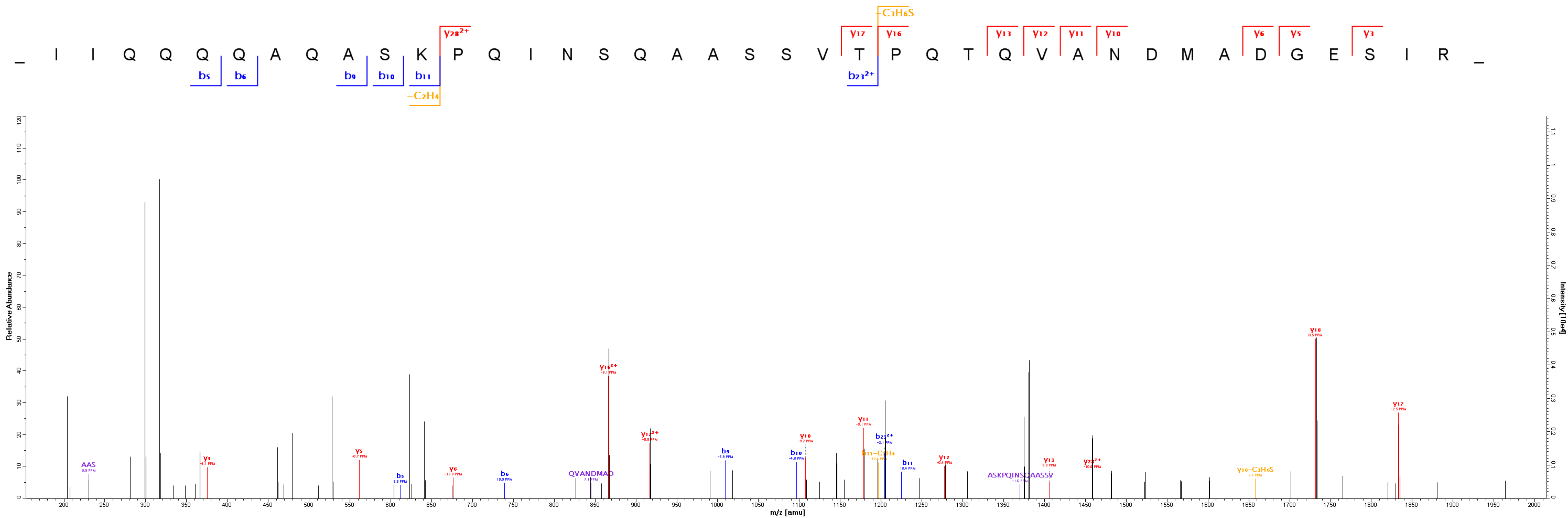


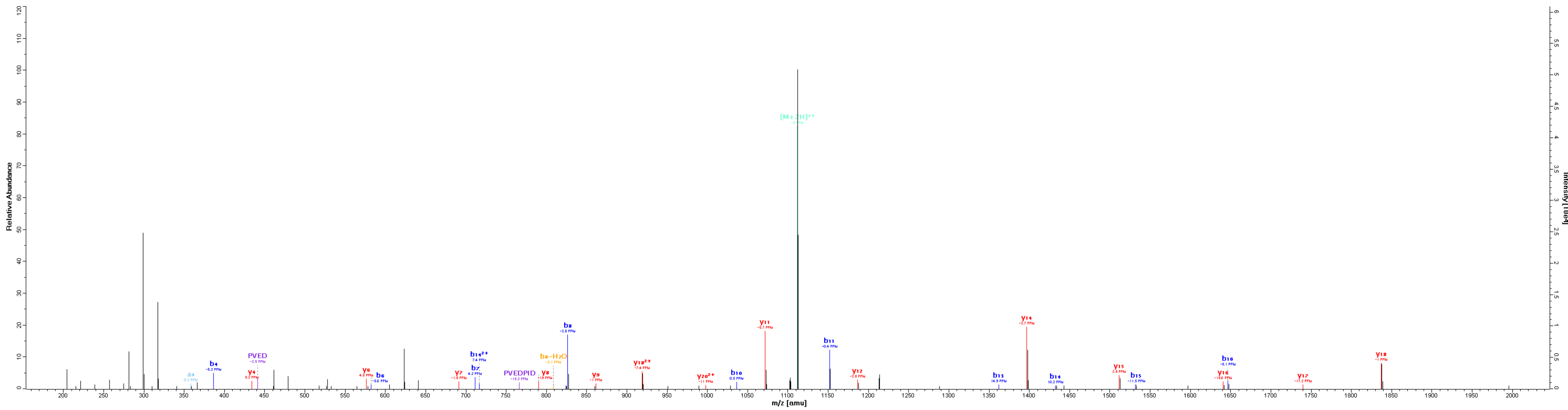
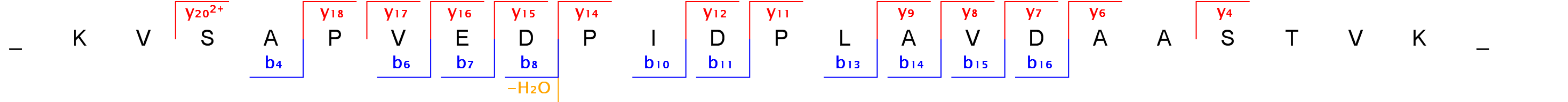


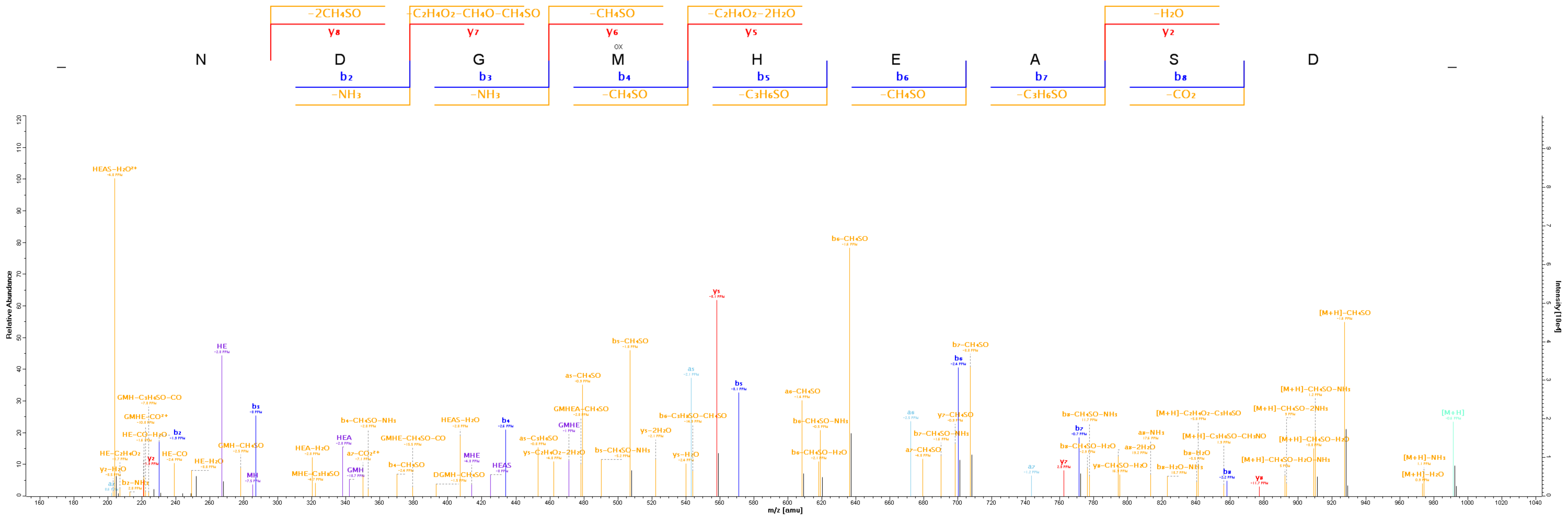


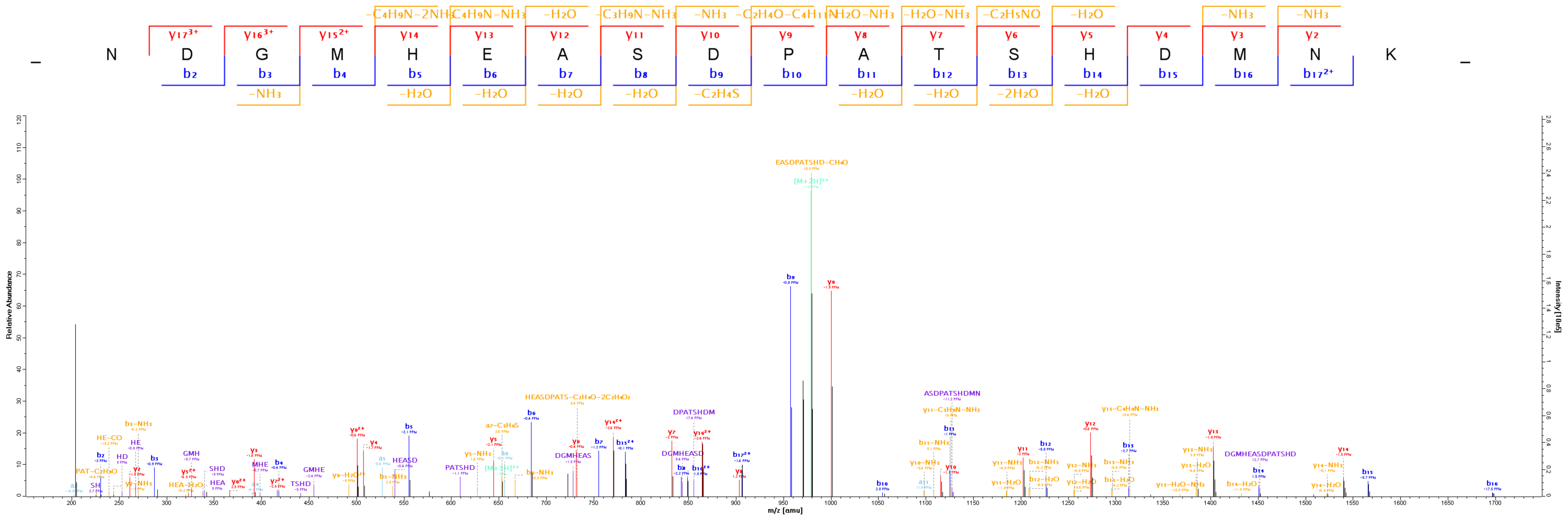


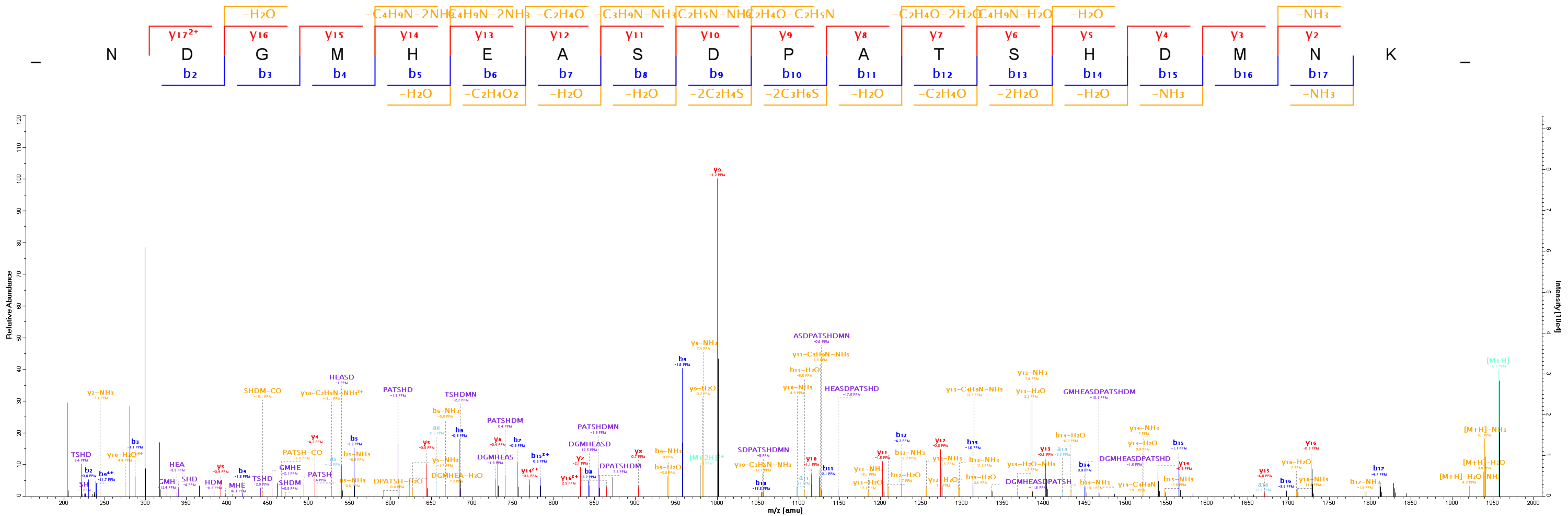


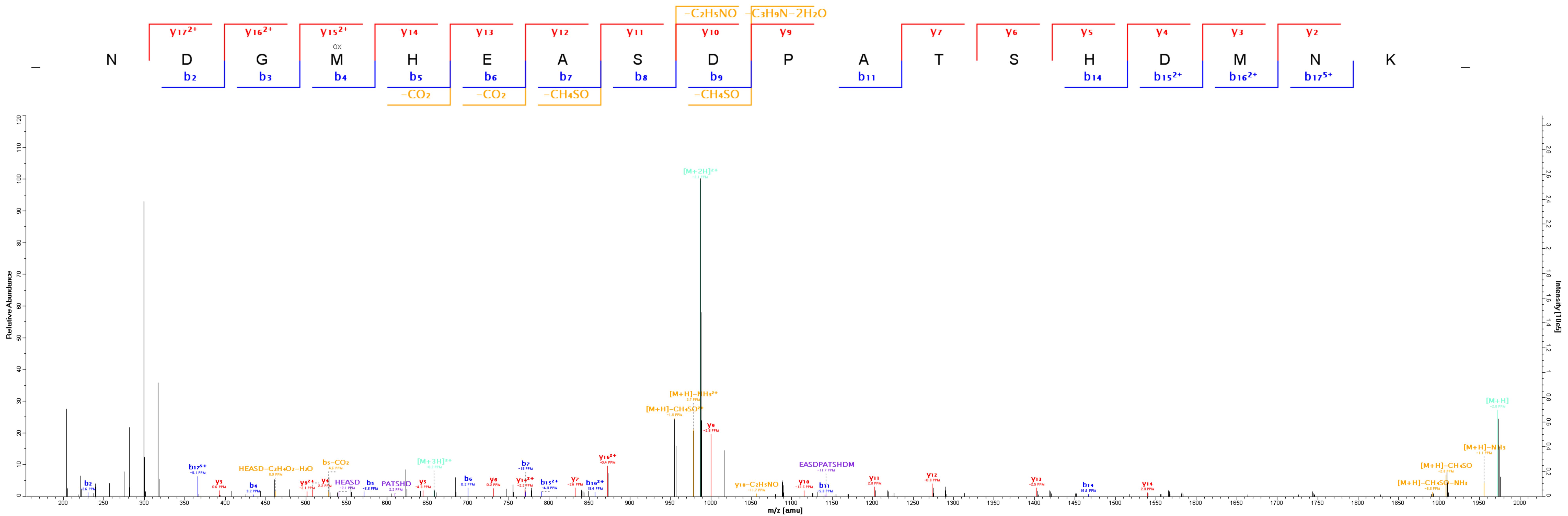


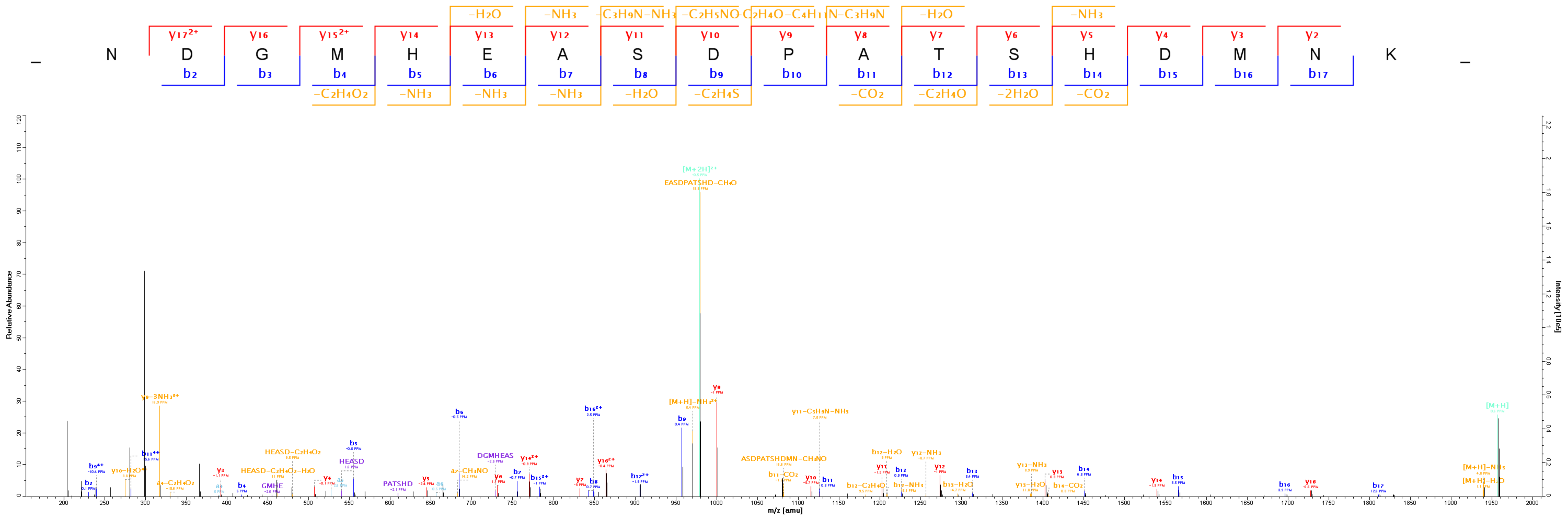


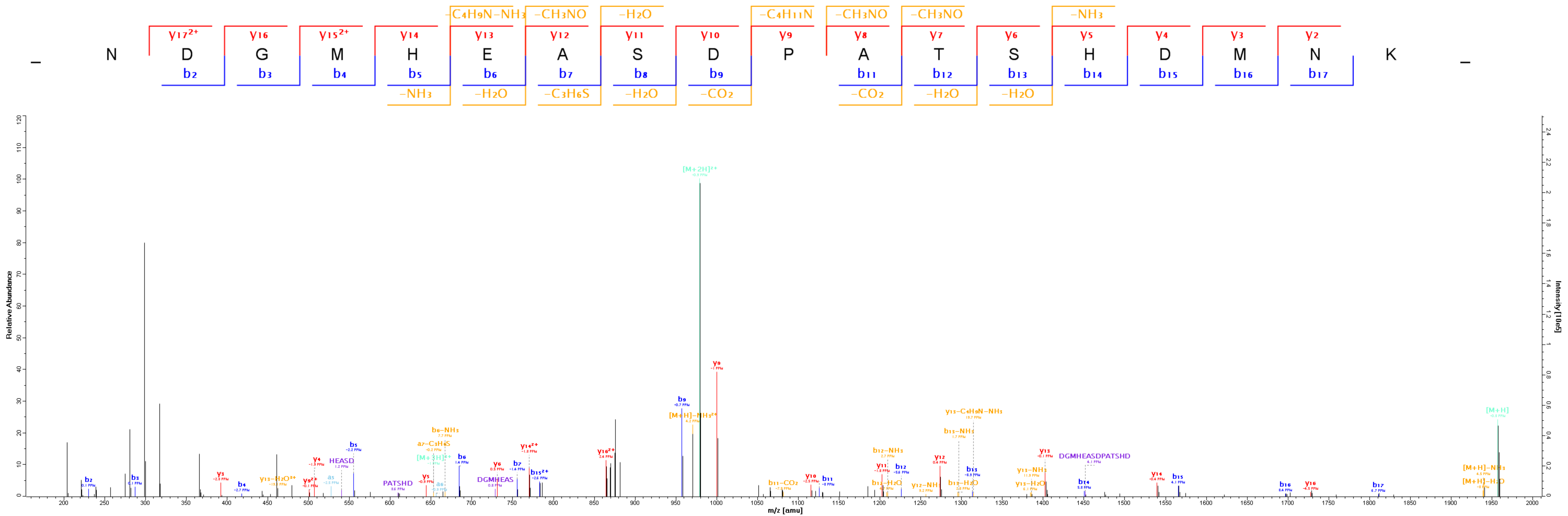


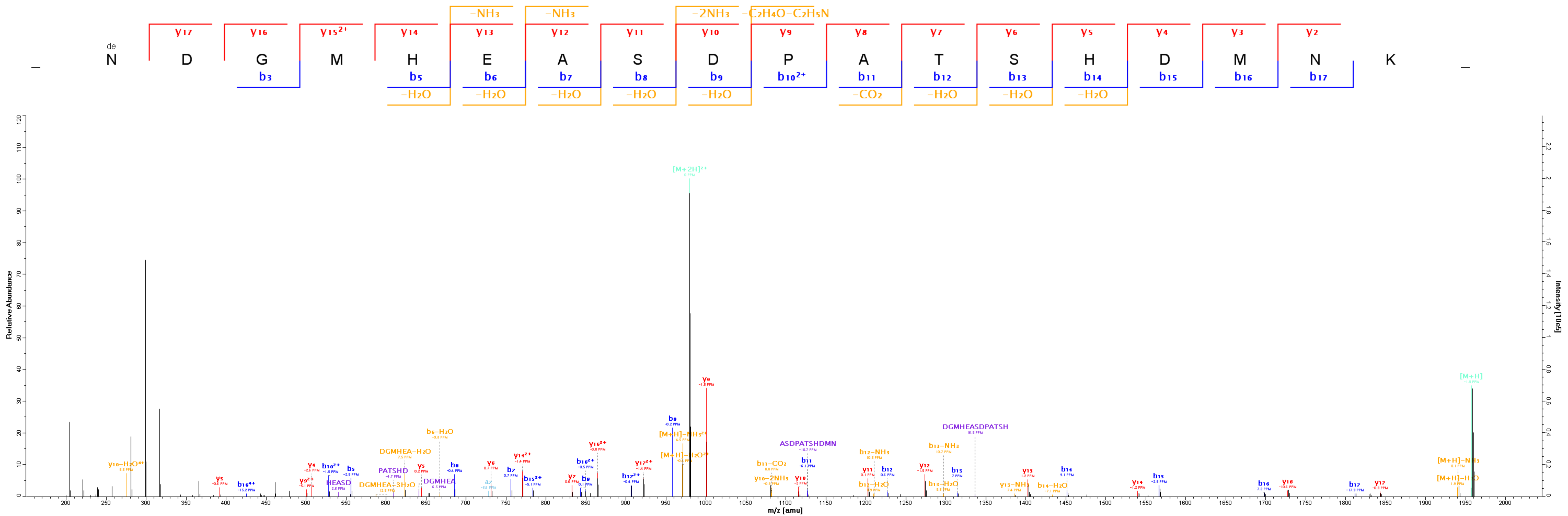


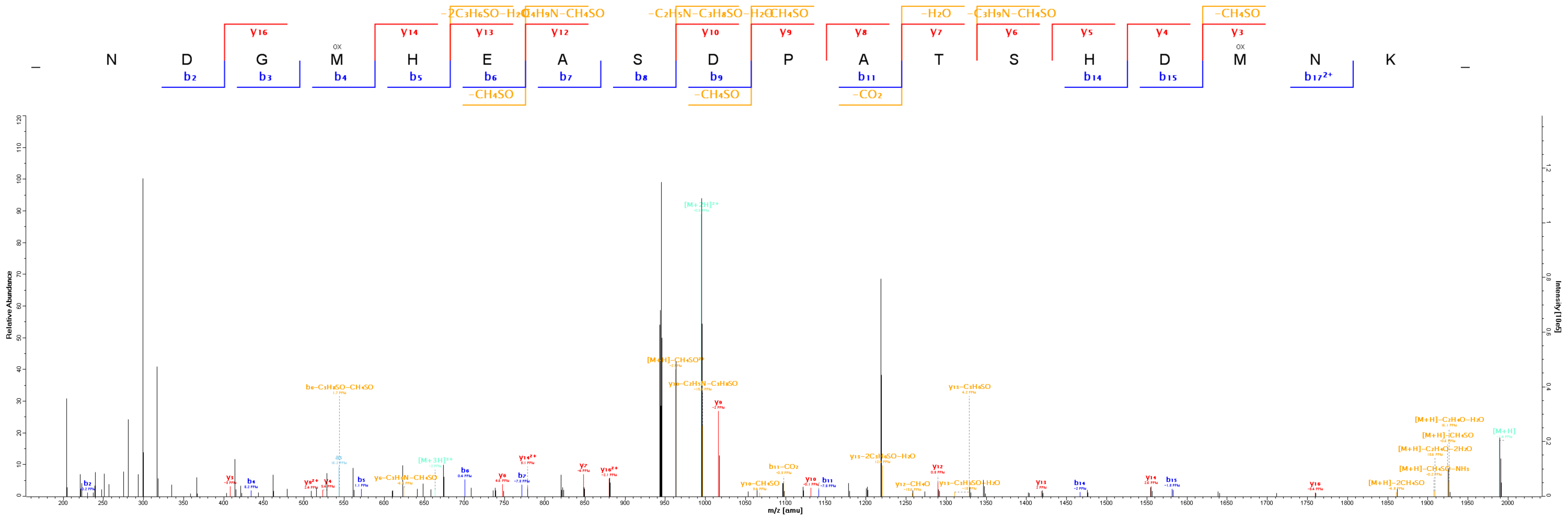


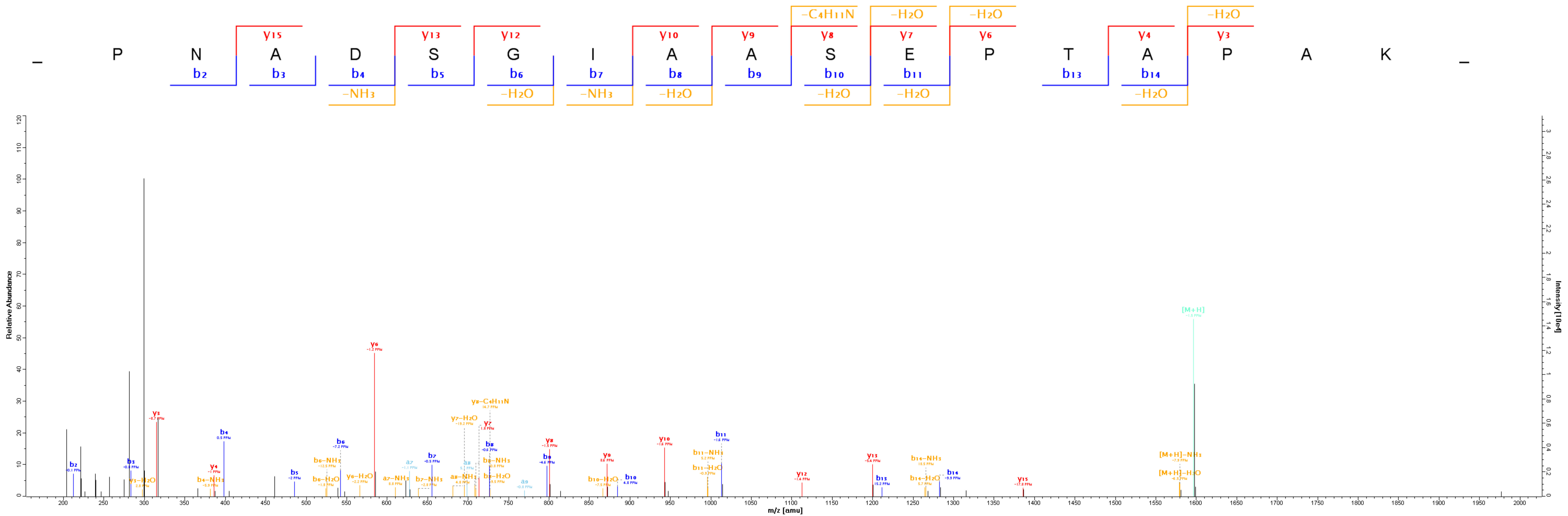


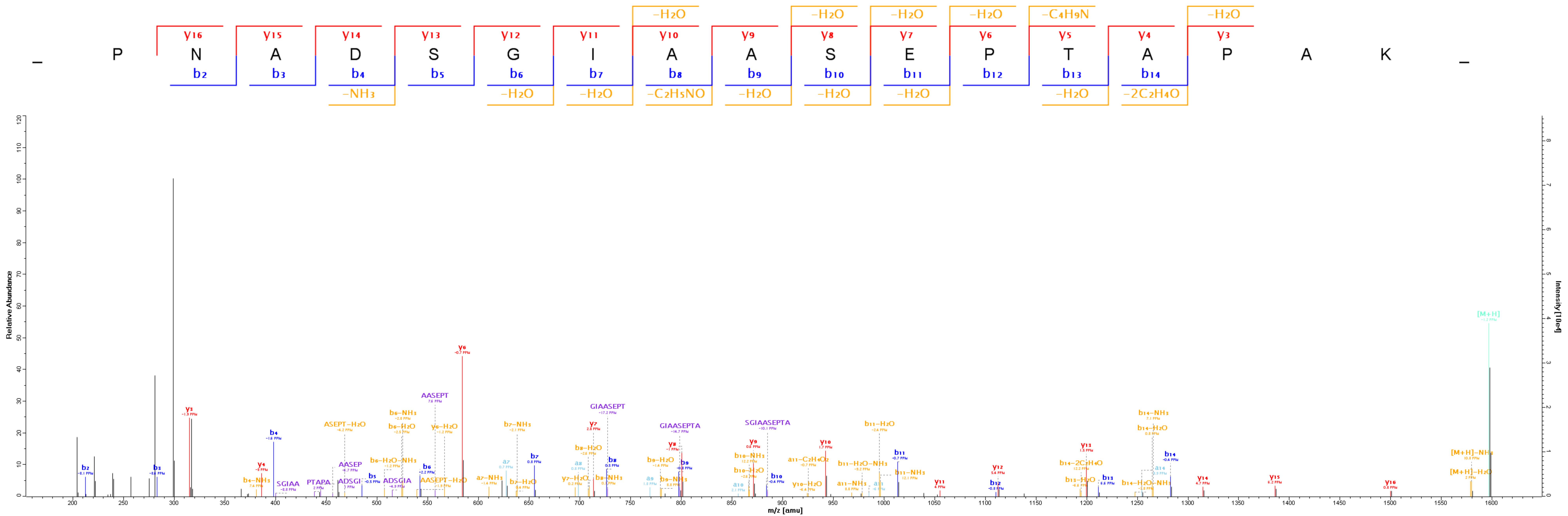


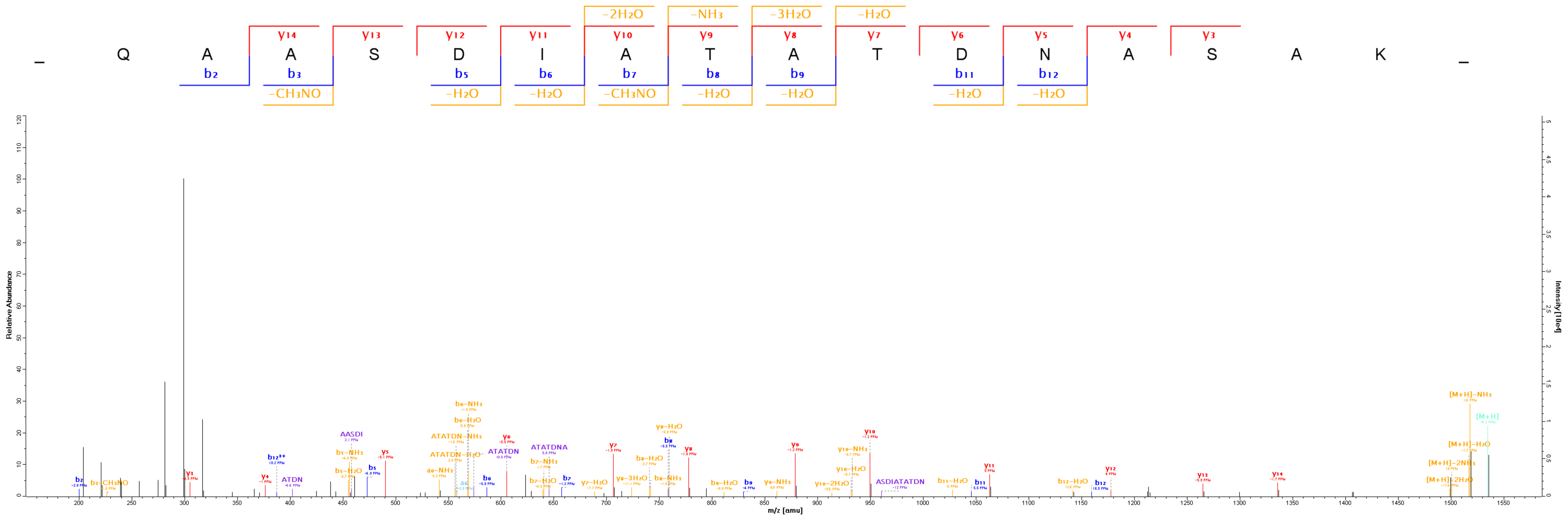


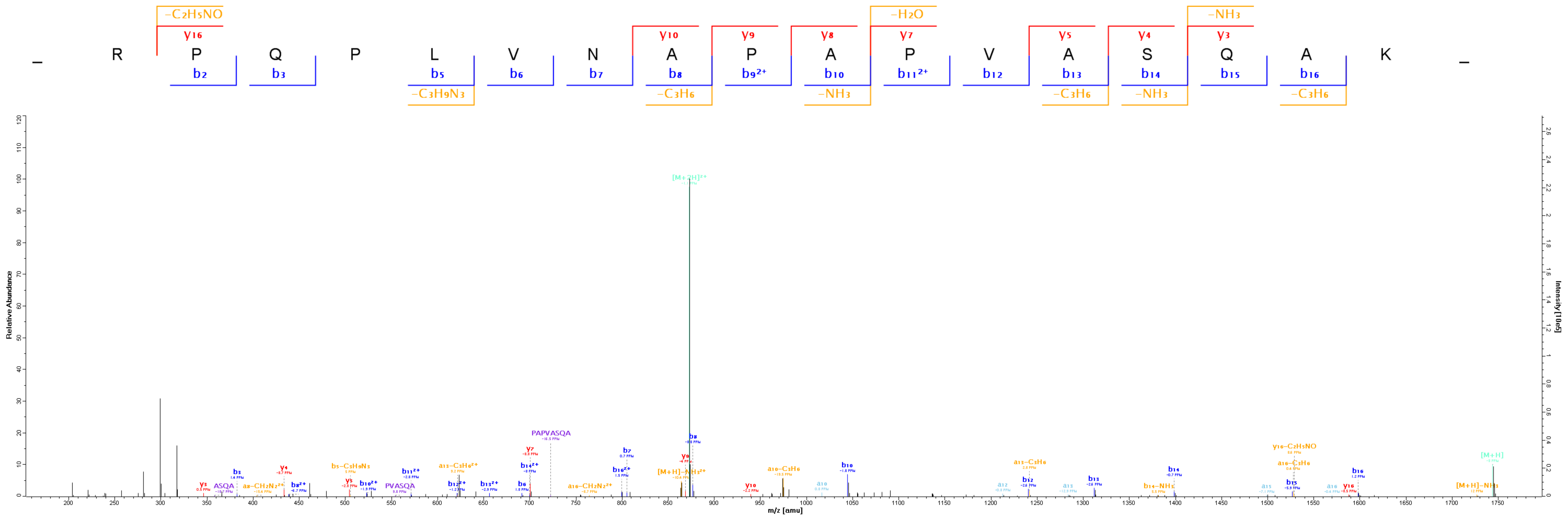


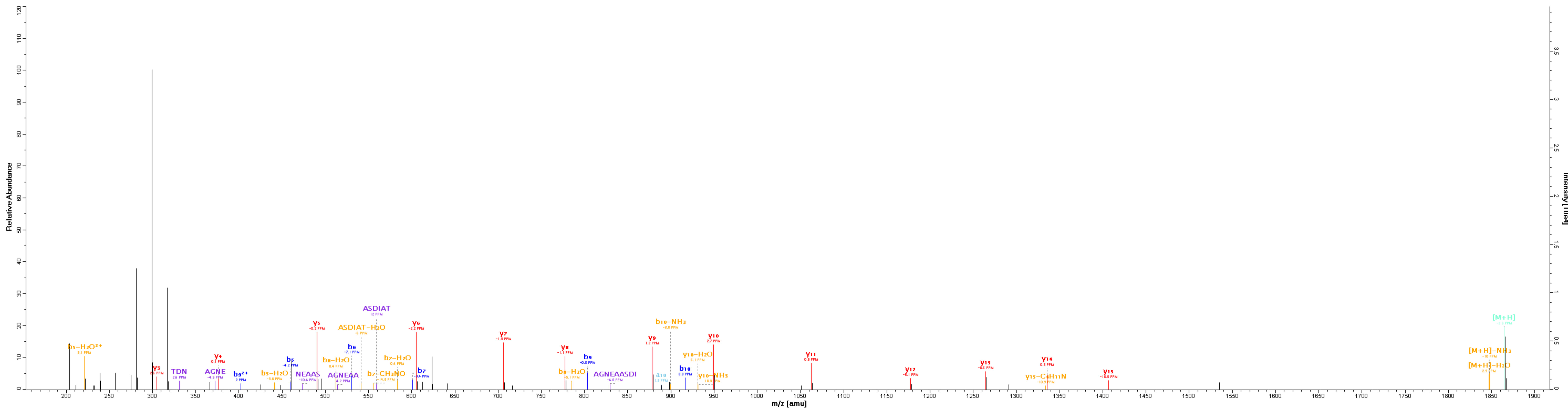
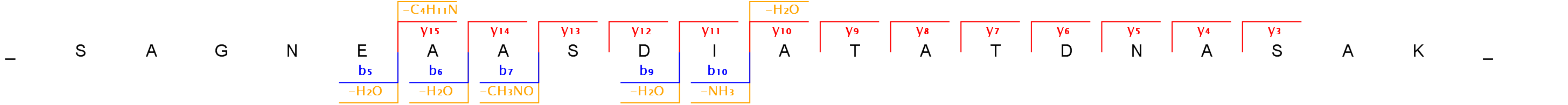


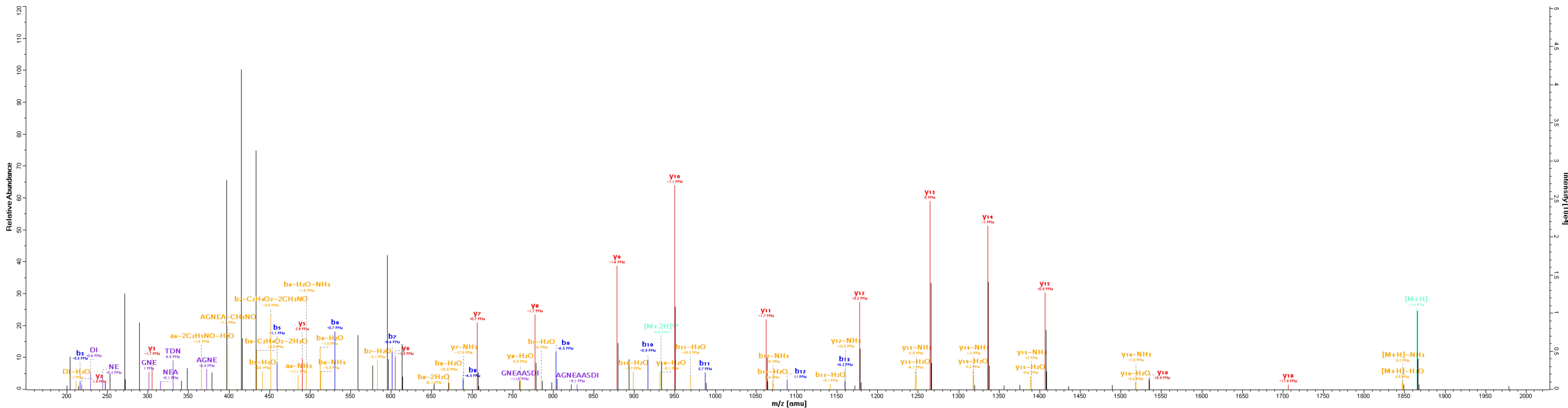
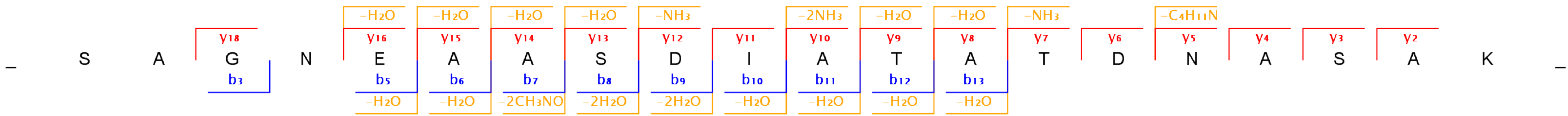


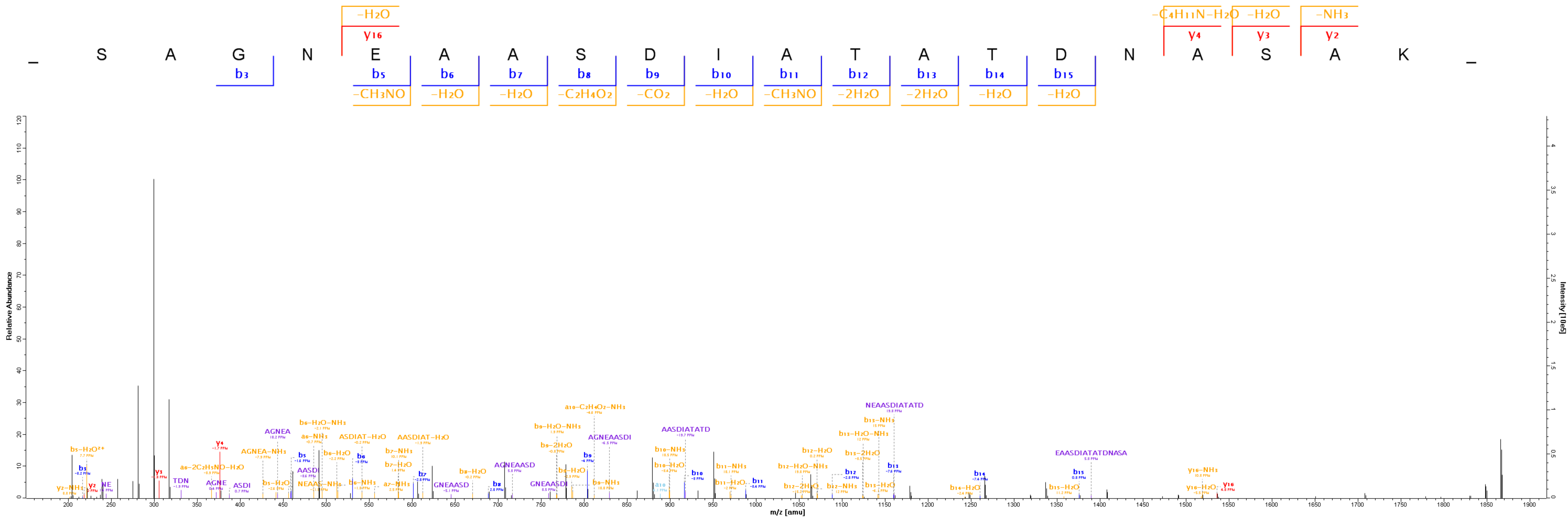


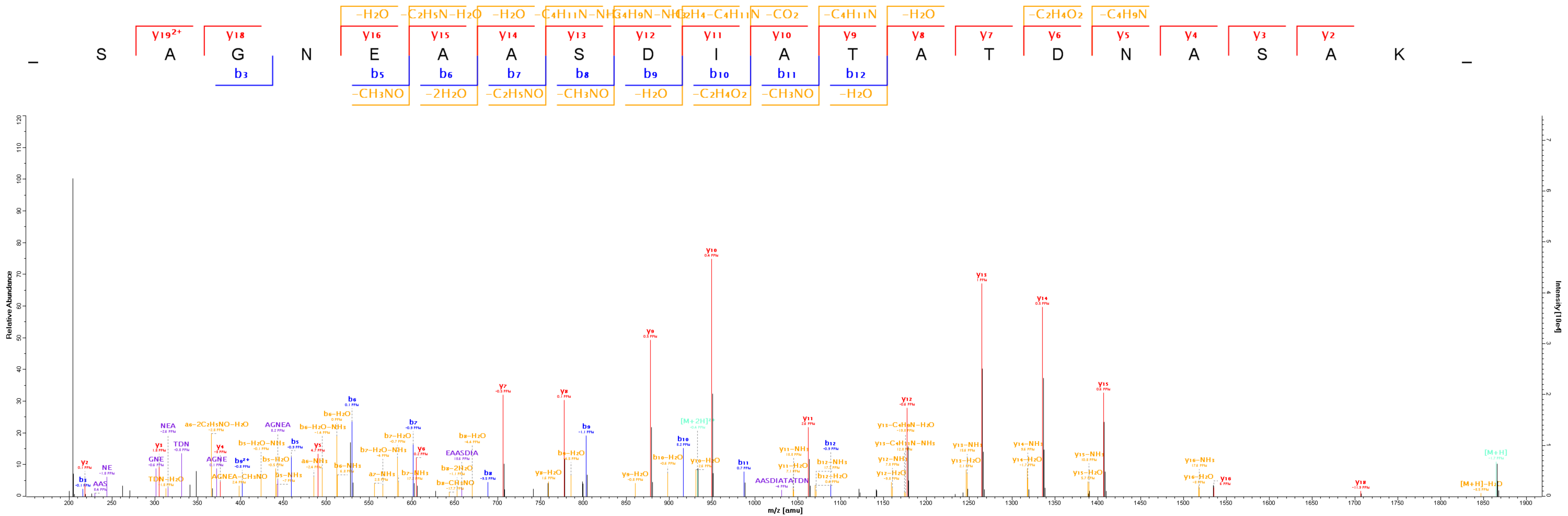












— S A G N E A A S D I A T A —

