

Supplementary Table 7: HCD identified *Acinetobacter baumannii* (strain 1441 C3) glycopeptides

Uniprot accession number	Protein name	Precursor m/z [Da]	Precursor Charge	Precursor MH+ [Da]	glycan mass	glycan compositions	peptide mass	peptide	mascot score	Page
A3M265_A CIBT	Uncharacterized protein [A1S_0556] [Acinetobacter baumannii (strain ATCC 17978 / NCDC KC 755)] 313 AA	918.93	4	3672.70	706.29	HexNAc-187-316	2966.4086	¹⁰⁸ AAQADKKTEASAAATTEQQDSFDAQ VQR ¹³⁵	46	7
A7FB17_A CIBT	Uncharacterized protein [A1S_3580] [Acinetobacter baumannii (strain ATCC 17978 / NCDC KC 755)]	982.11	3	2944.32	1412.58	double glycan; HexNAc-187-316	1531.7347	⁵⁰ AASDAVGSASEAAPATR ⁶⁶	21	8
A3M6D2_A CIBT	Uncharacterized protein [A1S_2049] [Acinetobacter baumannii (strain ATCC 17978 / NCDC KC 755)]	973.45	3	2918.35	1412.59	double glycan; HexNAc-187-316	1505.7595	¹⁸⁴ AASEPEQKVEYVR ¹⁹⁶	20	9
A3M3X9_A CIBT	OmpA/MotB [A1S_1193] [Acinetobacter baumannii (strain ATCC 17978 / NCDC KC 755)]	1686.79	2	3372.57	1412.58	double glycan; HexNAc-187-316	1959.9869	¹²⁹ AASGVEAAAAPATLTLSTDDK ¹⁴⁹	77	10
A3M3X9_A CIBT	OmpA/MotB [A1S_1193] [Acinetobacter baumannii (strain ATCC 17978 / NCDC KC 755)]	1360.29	3	4078.87	2118.88	triple glycan; HexNAc-187-316	1959.9869	¹²⁹ AASGVEAAAAPATLTLSTDDK ¹⁴⁹	41	11
A3M796_A CIBT	Uncharacterized protein [A1S_2371] [Acinetobacter baumannii (strain ATCC 17978 / NCDC KC 755)]	1665.26	2	3329.51	1412.59	double glycan; HexNAc-187-316	1916.9196	⁸² AEDQNADSGIAASTPVATAK ¹⁰¹	78	12
A3M265_A CIBT	Uncharacterized protein [A1S_0556] [Acinetobacter baumannii (strain ATCC 17978 / NCDC KC 755)]	1191.58	2	2382.16	1412.58	double glycan; HexNAc-187-316	969.5728	³⁰¹ AKPASTPAVK ³¹⁰	48	13
A3M265_A CIBT	Uncharacterized protein [A1S_0556] [Acinetobacter baumannii (strain ATCC 17978 / NCDC KC 755)]	1030.15	3	3088.45	2118.88	triple glycan; HexNAc-187-316	969.5728	³⁰¹ AKPASTPAVK ³¹⁰	28	14

A7FB95_A CIBT	Uncharacterized protein [A1S_3658] [Acinetobacter baumannii (strain ATCC 17978 / NCDC KC 755)]	850.35	3	2549.03	706.29	HexNAc-187- 316	1842.7381	²⁰ DGMHEASDPATSHDMNK ³⁶	78	15
A7FBI1_A CIBT	Uncharacterized protein [A1S_3744] [Acinetobacter baumannii (strain ATCC 17978 / NCDC KC 755)]	769.12	4	3073.46	706.29	HexNAc-187- 316	2367.1674	²⁹ EEEQDKVETAVSEPPQKPAK ⁴⁹	34	16
A7FB17_A CIBT	Uncharacterized protein [A1S_3580] [Acinetobacter baumannii (strain ATCC 17978 / NCDC KC 755)]	989.45	3	2966.33	706.29	HexNAc-187- 316	2260.0436	⁴³ EQANTANAASDAVGSASEAAPATR ⁶⁶	104	17
F0QPJ4_A CIBD	Uncharacterized protein [ABTW07_0637] [Acinetobacter baumannii (strain TCDC-AB0715)]	1349.59	3	4046.76	2118.87	triple glycan; HexNAc-187- 316	1927.8992	⁶⁰ ETAAAASDVAAAASDVAASAAH ⁸¹	62	18
A7FBI1_A CIBT	Uncharacterized protein [A1S_3744] [Acinetobacter baumannii (strain ATCC 17978 / NCDC KC 755)]	808.88	4	3232.51	706.29	HexNAc-187- 316	2526.2206	²⁵ ETPKEEQDKVETAVSEPPQK ⁴⁶	41	19
A7FB63_A CIBT	Uncharacterized protein [A1S_3626] [Acinetobacter baumannii (strain ATCC 17978 / NCDC KC 755)]	1040.46	3	3119.37	1412.58	double glycan; HexNAc-187- 316	1706.7828	⁵⁰ GDQAASDIATATDNASAK ⁶⁷	79	20
A3M9I2_A CIBT	Putative membrane protein [A1S_3179] [Acinetobacter baumannii (strain ATCC 17978 / NCDC KC 755)]	1212.09	4	4845.33	706.29	HexNAc-187- 316	4139.0422	⁴⁸ IIQQQQAQASKPQINSQAASSVTPQT QVANDMADGESIR ⁸⁶	56	21
A3M9I2_A CIBT	Putative membrane protein [A1S_3179] [Acinetobacter baumannii (strain ATCC 17978 / NCDC KC 755)]	1216.09	4	4861.33	706.30	HexNAc-187- 316	4155.0371	⁴⁸ IIQQQQAQASKPQINSQAASSVTPQT QVANDM(+16)ADGESIR ⁸⁶	33	22
A3M6D2_A CIBT	Uncharacterized protein [A1S_2049] [Acinetobacter baumannii (strain ATCC 17978 / NCDC KC 755)]	695.66	3	2084.98	706.29	HexNAc-187- 316	1378.6849	¹⁵⁹ KAASEPEQKVEY ¹⁷⁰	24	23
A7FB63_A CIBT	Uncharacterized protein [A1S_3626] [Acinetobacter baumannii (strain ATCC 17978 / NCDC KC 755)]	900.07	3	2698.20	706.25	HexNAc-187- 316	1992.9469	⁴⁷ KSAGDQAASDIATATDNASAK ⁶⁷	115	24

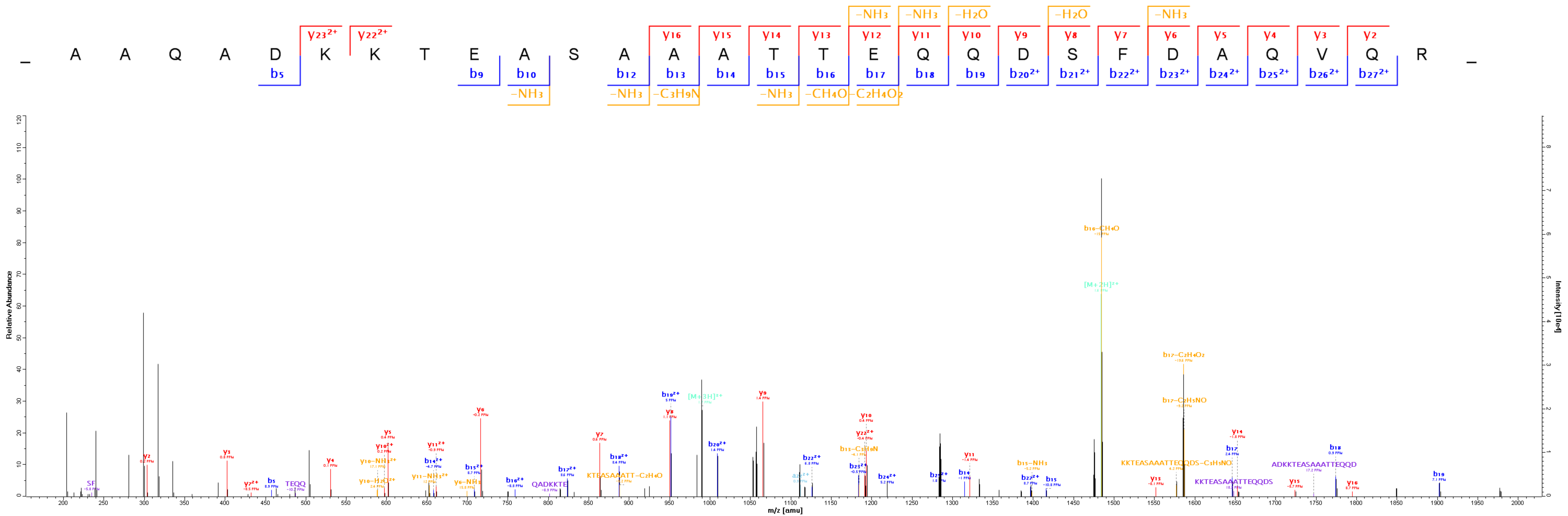
A3M265_A CIBT	Uncharacterized protein [A1S_0556] [Acinetobacter baumannii (strain ATCC 17978 / NCDC KC 755)]	924.77	3	2772.28	390.17	HexNAc-187	2382.1168	¹¹⁴ KTEASAAATTEQQDSFDAQVQR ¹³⁵	113	25
A7FB17_A CIBT	Uncharacterized protein [A1S_3580] [Acinetobacter baumannii (strain ATCC 17978 / NCDC KC 755)]	1020.12	3	3058.36	1412.58	double glycan; HexNAc-187- 316	1645.7776	⁴⁹ NAASDAVGSASEAAPATR ⁶⁶	55	26
A7FB95_A CIBT	Uncharacterized protein [A1S_3658] [Acinetobacter baumannii (strain ATCC 17978 / NCDC KC 755)]	725.63	3	2174.87	706.29	HexNAc-187- 316	1468.5758	¹⁹ NDGMHEASDPATSH ³²	74	27
A7FB95_A CIBT	Uncharacterized protein [A1S_3658] [Acinetobacter baumannii (strain ATCC 17978 / NCDC KC 755)]	763.97	3	2289.89	706.29	HexNAc-187- 316	1583.6027	¹⁹ NDGMHEASDPATSHD ³³	53	28
A7FB95_A CIBT	Uncharacterized protein [A1S_3658] [Acinetobacter baumannii (strain ATCC 17978 / NCDC KC 755)]	807.65	3	2420.93	706.29	HexNAc-187- 316	1714.6432	¹⁹ NDGMHEASDPATSHDM ³⁴	74	29
A7FB95_A CIBT	Uncharacterized protein [A1S_3658] [Acinetobacter baumannii (strain ATCC 17978 / NCDC KC 755)]	1685.19	2	3369.38	1412.60	double glycan; HexNAc-187- 316	1956.7811	¹⁹ NDGMHEASDPATSHDMNK ³⁶	104	30
A7FB95_A CIBT	Uncharacterized protein [A1S_3658] [Acinetobacter baumannii (strain ATCC 17978 / NCDC KC 755)]	1332.53	2	2664.06	706.29	HexNAc-187- 316	1957.7651	¹⁹ N(+1)DGMHEASDPATSHDMNK ³⁶	97	31
A7FB95_A CIBT	Uncharacterized protein [A1S_3658] [Acinetobacter baumannii (strain ATCC 17978 / NCDC KC 755)]	783.32	3	2347.93	390.17	HexNAc-187	1957.7651	¹⁹ N(+1)DGMHEASDPATSHDMNK ³⁶	82	32
A7FB95_A CIBT	Uncharacterized protein [A1S_3658] [Acinetobacter baumannii (strain ATCC 17978 / NCDC KC 755)]	1332.04	2	2663.08	706.30	HexNAc-187- 316	1956.7811	¹⁹ NDGMHEASDPATSHDMNK ³⁶	77	33
A7FB95_A CIBT	Uncharacterized protein [A1S_3658] [Acinetobacter baumannii (strain ATCC 17978 / NCDC KC 755)]	782.99	3	2346.95	390.17	HexNAc-187	1956.7811	¹⁹ NDGMHEASDPATSHDMNK ³⁶	55	34

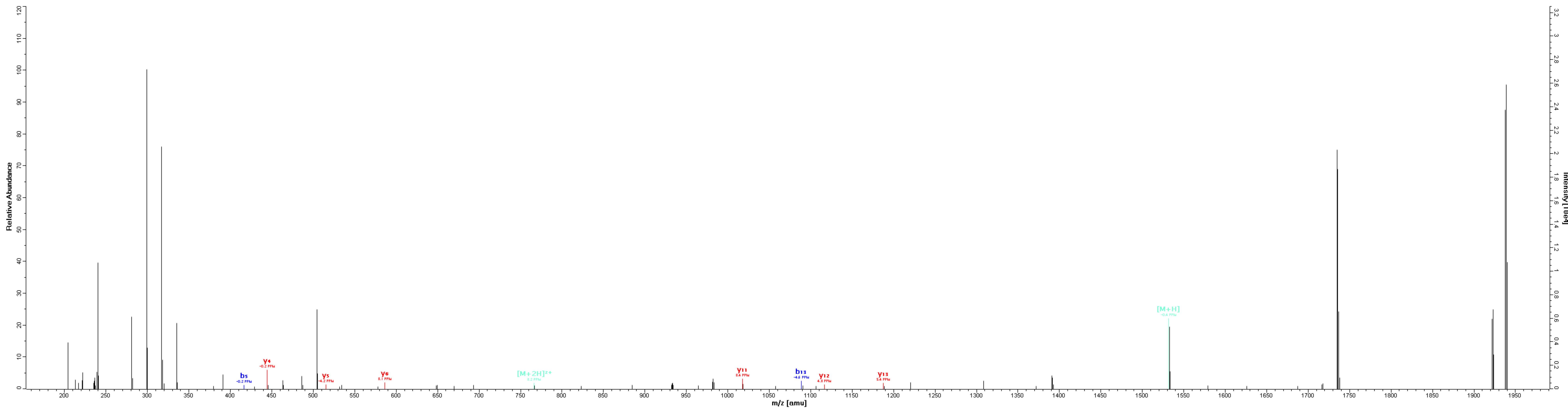
A7FB95_A CIBT	Uncharacterized protein [A1S_3658] [Acinetobacter baumannii (strain ATCC 17978 / NCDC KC 755)]	1129.12	3	3385.35	1412.58	double glycan; HexNAc-187- 316	1972.776	¹⁹ NDGM(+16)HEASDPATSHDMNK ³⁶	55	35
A7FB95_A CIBT	Uncharacterized protein [A1S_3658] [Acinetobacter baumannii (strain ATCC 17978 / NCDC KC 755)]	893.69	3	2679.07	706.29	HexNAc-187- 316	1972.776	¹⁹ NDGM(+16)HEASDPATSHDMNK ³⁶	37	36
A7FB95_A CIBT	Uncharacterized protein [A1S_3658] [Acinetobacter baumannii (strain ATCC 17978 / NCDC KC 755)]	894.02	3	2680.05	706.27	HexNAc-187- 316	1973.776	¹⁹ NDGM(+16)HEASDPATSHDMNK ³⁶	27	37
A3M954_A CIBT	Uncharacterized protein [A1S_3051] [Acinetobacter baumannii (strain ATCC 17978 / NCDC KC 755)]	1034.12	3	3100.35	706.30	HexNAc-187- 316	2394.0579	³³³ NEGSAELDELFDGGAASEAPADTK ³⁵⁶	111	38
A3M954_A CIBT	Uncharacterized protein [A1S_3051] [Acinetobacter baumannii (strain ATCC 17978 / NCDC KC 755)]	1269.55	3	3806.64	1412.59	double glycan; HexNAc-187- 316	2394.0579	³³³ NEGSAELDELFDGGAASEAPADTK ³⁵⁶	21	39
F0QK73_A CIBD	Uncharacterized protein [ABTW07_0162] [Acinetobacter baumannii (strain TCDC-AB0715)]	1391.91	4	5564.63	706.30	HexNAc-187- 316	4858.3324	⁹⁴ NQGTAM(+16)IVEAPSTAQPAASEPAS VSTDDTTDSTAAIPQQPNYILQVR ¹⁴⁰	20	40
B0VBI1_A CIBY	Uncharacterized protein [ABAYE2277] [Acinetobacter baumannii (strain AYE)]	998.09	3	2992.24	706.29	HexNAc-187- 316	2285.951	²⁵ NSKNDGMHEASDPATSHDMNK ⁴⁵	67	41
A3M160_A CIBT	Uncharacterized protein [A1S_0171] [Acinetobacter baumannii (strain ATCC 17978 / NCDC KC 755)]	759.81	4	3036.20	706.29	HexNAc-187- 316	2329.9053	⁴⁹ QMMESHEQMNHAEHSSSAQ ⁶⁸	60	42
N9IX31_A CIBA	Uncharacterized protein [F920_00864] [Acinetobacter baumannii NIPH 335]	1017.47	3	3050.39	706.30	HexNAc-187- 316	2344.0899	⁵⁰ QVVQQDEQSVESSAAQPQTSP ⁷¹	67	43
A7FB63_A CIBT	Uncharacterized protein [A1S_3626] [Acinetobacter baumannii (strain ATCC 17978 / NCDC KC 755)]	1050.45	3	3149.34	1412.58	double glycan; HexNAc-187- 316	1736.757	⁴⁸ SAGDQAASDIATATDNASA ⁶⁶	81	44

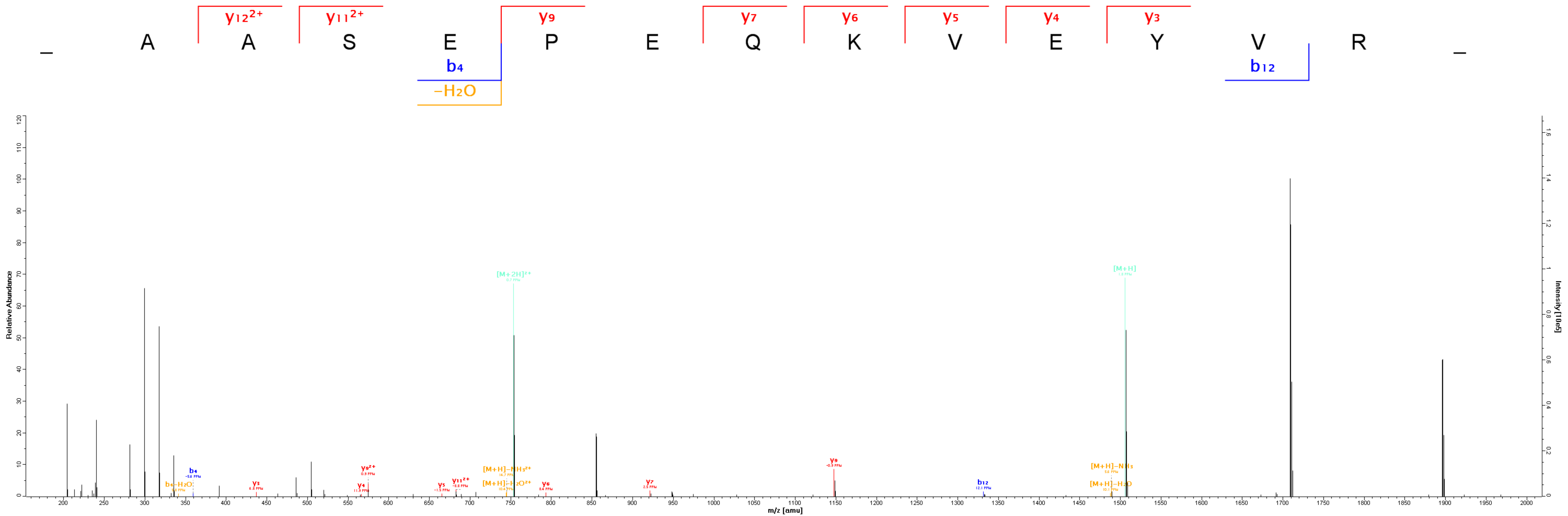
A7FB63_A CIBT	Uncharacterized protein [A1S_3626] [Acinetobacter baumannii (strain ATCC 17978 / NCDC KC 755)]	1286.07	2	2571.14	706.29	HexNAc-187- 316	1864.8519	⁴⁸ SAGDQAASDIATATDNASAK ⁶⁷	127	45
A7FB63_A CIBT	Uncharacterized protein [A1S_3626] [Acinetobacter baumannii (strain ATCC 17978 / NCDC KC 755)]	1639.22	2	3277.44	1412.59	double glycan; HexNAc-187- 316	1864.8519	⁴⁸ SAGDQAASDIATATDNASAK ⁶⁷	68	46
A7FB63_A CIBT	Uncharacterized protein [A1S_3626] [Acinetobacter baumannii (strain ATCC 17978 / NCDC KC 755)]	1328.58	3	3983.73	2118.88	triple glycan; HexNAc-187- 316	1864.8519	⁴⁸ SAGDQAASDIATATDNASAK ⁶⁷	52	47
A7FB63_A CIBT	Uncharacterized protein [A1S_3626] [Acinetobacter baumannii (strain ATCC 17978 / NCDC KC 755)]	987.78	3	2961.31	1096.46	HexNAc-187- 316HexNAc- 187	1864.8519	⁴⁸ SAGDQAASDIATATDNASAK ⁶⁷	31	48
A7FAU3_A CIBT	Uncharacterized protein [A1S_3506] [Acinetobacter baumannii (strain ATCC 17978 / NCDC KC 755)]	793.39	3	2378.14	706.29	HexNAc-187- 316	1671.8548	²² SKKEEAPAAAAASEAVAA ³⁹	34	49
N9F4N9_A CICA	Uncharacterized protein [F936_02973] [Acinetobacter calcoaceticus DSM 30006 = CIP 81.8]	1428.33	3	4282.97	706.25	HexNAc-187- 316	3576.726	³⁰ STAGEEKVVVSTQEANTATAATDAVG SASEAAPATR ⁶⁶	49	50
A3M3E7_A CIBT	Putative lipoprotein [A1S_1009] [Acinetobacter baumannii (strain ATCC 17978 / NCDC KC 755)]	1194.53	3	3581.57	706.29	HexNAc-187- 316	2875.2824	²⁵ TETTSASTPVQTAQTNNNEAVDTAHT A ⁵²	59	51
A3M3E7_A CIBT	Putative lipoprotein [A1S_1009] [Acinetobacter baumannii (strain ATCC 17978 / NCDC KC 755)]	1157.26	4	4626.03	706.30	HexNAc-187- 316	3919.7337	²⁵ TETTSASTPVQTAQTNNNEAVDTAHT AENSLDWDGK ⁶¹	55	52
N9KIL3_A CIBA	Uncharacterized protein [F914_00444] [Acinetobacter baumannii NIPH 290]	968.11	3	2902.32	1412.58	double glycan; HexNAc-187- 316	1489.7381	⁵⁶ TKPSESSEPVVQT ⁶⁹	32	53
N9KIL3_A CIBA	Uncharacterized protein [F914_00444] [Acinetobacter baumannii NIPH 290]	1213.07	2	2425.14	706.29	HexNAc-187- 316	1718.8443	⁵⁶ TKPSESSEPVVQTQT ⁷¹	56	54

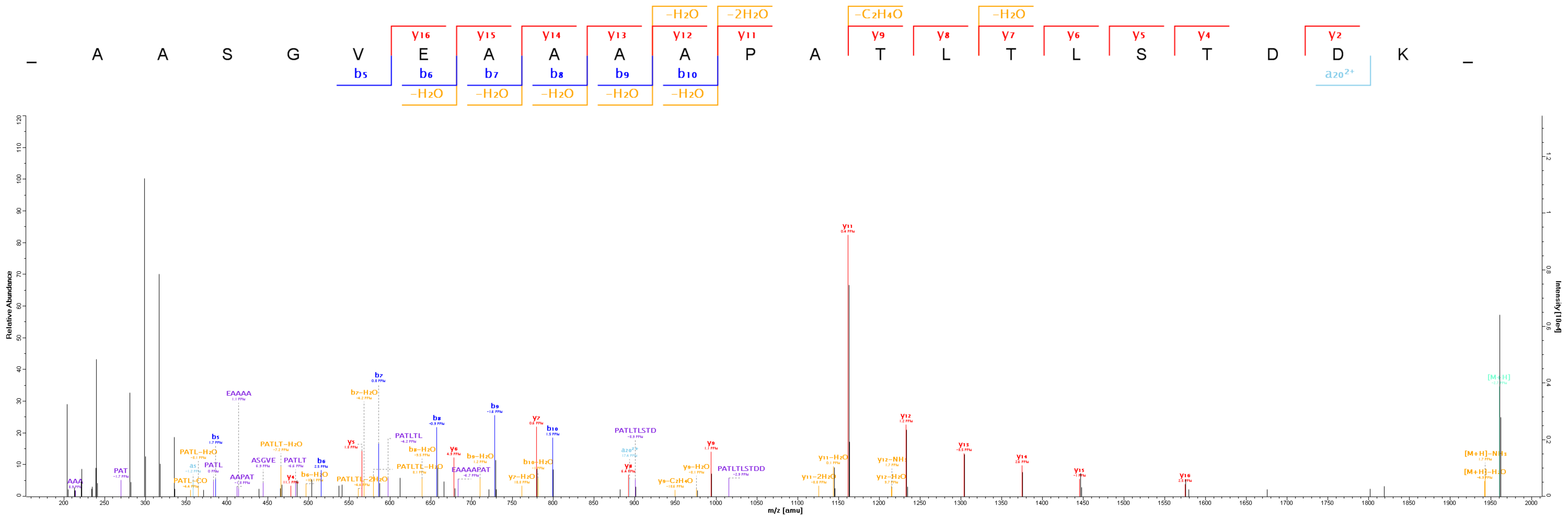
N9KIL3_A CIBA	Uncharacterized protein [F914_00444] [Acinetobacter baumannii NIPH 290]	832.73	3	2496.17	706.29	HexNAc-187- 316	1789.8814	⁵⁶ TTKPSESSEPVVQTQTA ⁷²	74	55
N9KIL3_A CIBA	Uncharacterized protein [F914_00444] [Acinetobacter baumannii NIPH 290]	1248.59	2	2496.18	706.29	HexNAc-187- 316	1789.8814	⁵⁶ TTKPSESSEPVVQTQTA ⁷²	67	56
N9KIL3_A CIBA	Uncharacterized protein [F914_00444] [Acinetobacter baumannii NIPH 290]	985.13	3	2953.37	706.30	HexNAc-187- 316	2247.0735	⁵⁶ TTKPSESSEPVVQTQTANSQQ ⁷⁶	72	57
N9KIL3_A CIBA	Uncharacterized protein [F914_00444] [Acinetobacter baumannii NIPH 290]	1288.63	3	3863.88	706.30	HexNAc-187- 316	3157.5859	⁵⁶ TTKPSESSEPVVQTQTANSQQLVNEDV LK ⁸⁴	72	58
N9KIL3_A CIBA	Uncharacterized protein [F914_00444] [Acinetobacter baumannii NIPH 290]	1257.38	4	5026.50	706.28	HexNAc-187- 316	4320.2205	⁵⁶ TTKPSESSEPVVQTQTANSQQLVNEDV LKQPIPAQESLAK ⁹⁵	41	59
A7FB17_A CIBT	Uncharacterized protein [A1S_3580] [Acinetobacter baumannii (strain ATCC 17978 / NCDC KC 755)]	1193.90	3	3579.68	706.29	HexNAc-187- 316	2873.3872	³⁷ VVVSTQEQANTANAASDAVGSASEAA PATR ⁶⁶	122	60
A7FB17_A CIBT	Uncharacterized protein [A1S_3580] [Acinetobacter baumannii (strain ATCC 17978 / NCDC KC 755)]	1429.33	3	4285.97	1412.59	double glycan; HexNAc-187- 316	2873.3872	³⁷ VVVSTQEQANTANAASDAVGSASEAA PATR ⁶⁶	87	61

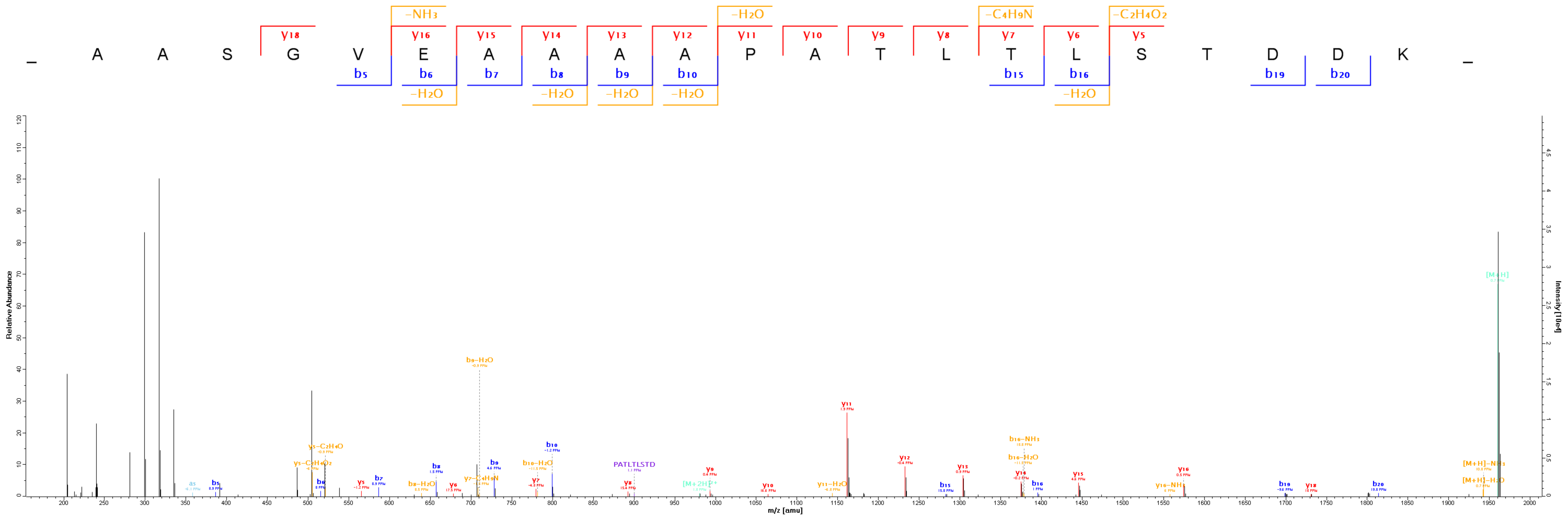
Supplementary table 7: Identifications are labeled according to the corresponding Uniprot accession number and protein name parent m/z, charge state, deconvoluted mass, glycan mass, glycan composition, peptide mass, peptide sequence and mascot ion score are provided for each identified glycopeptide. All identified glycopeptide HCD spectra are provided and are available on the designated pages

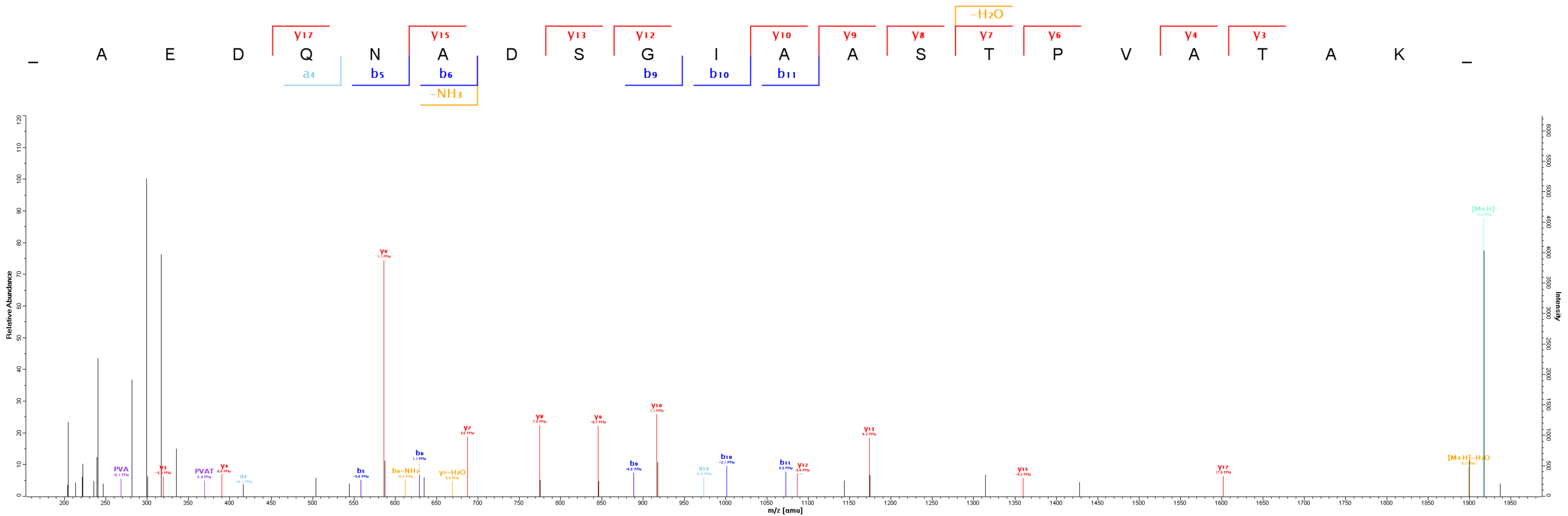


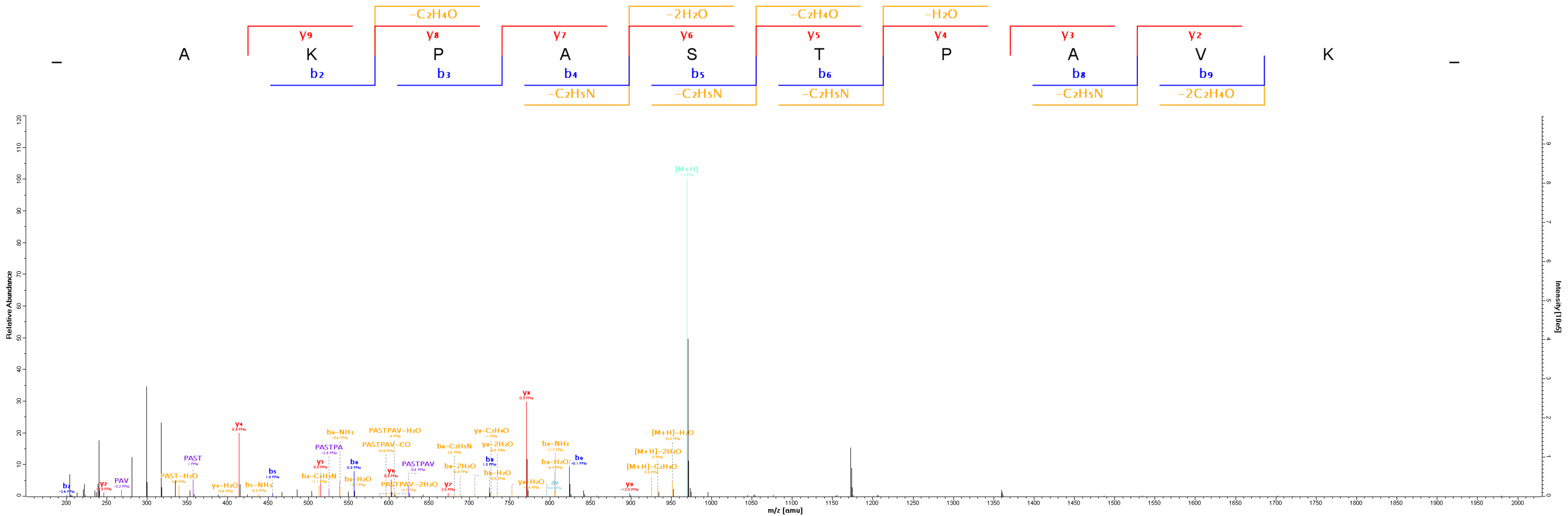


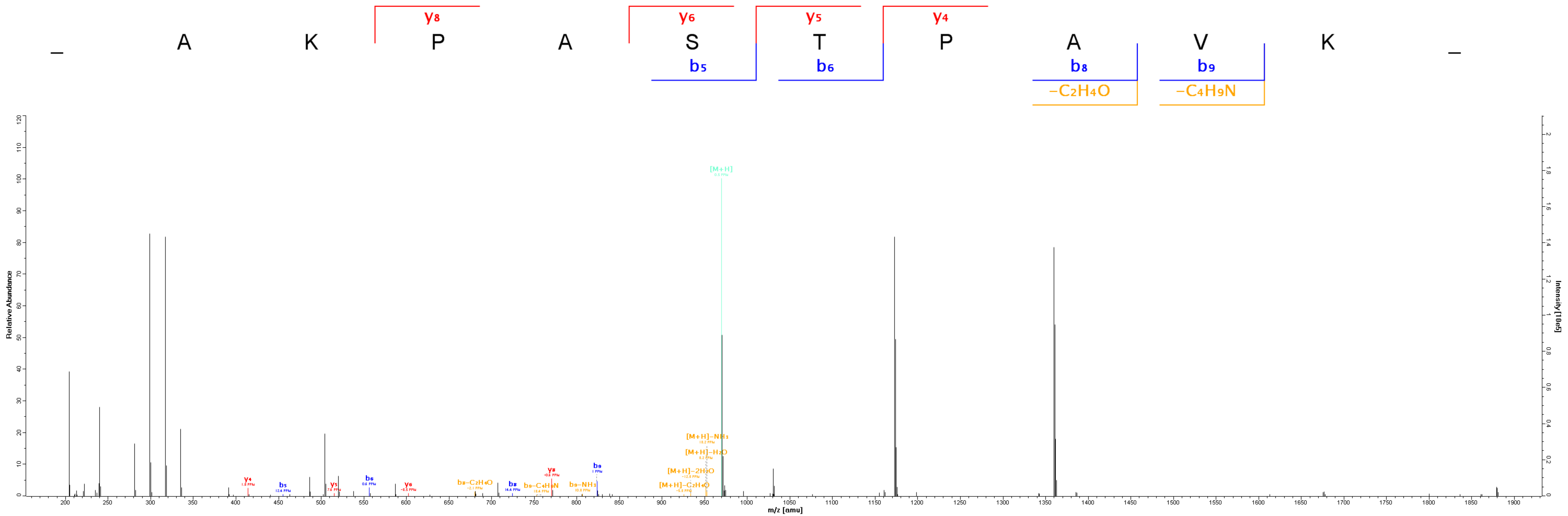


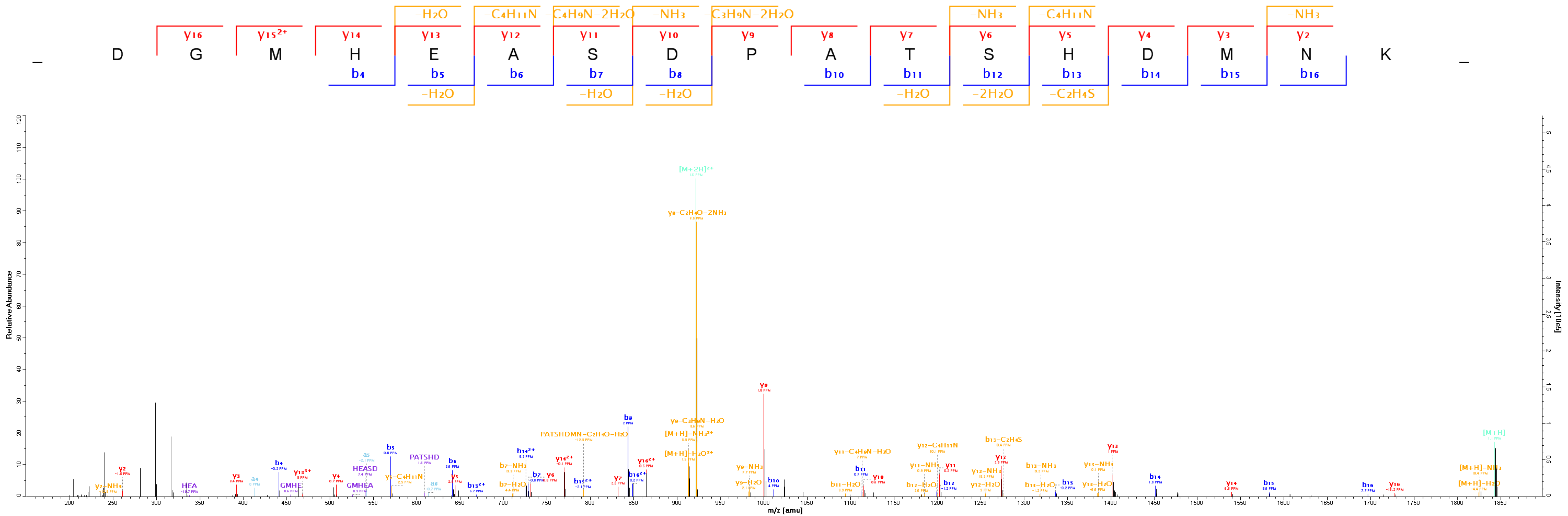


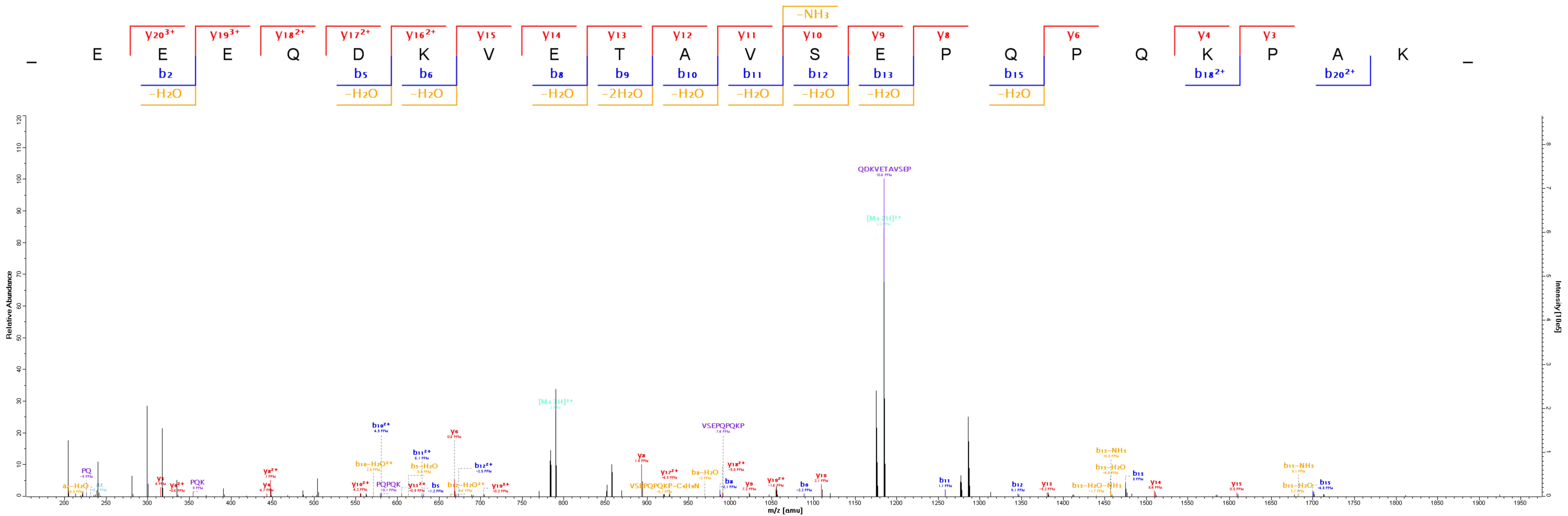


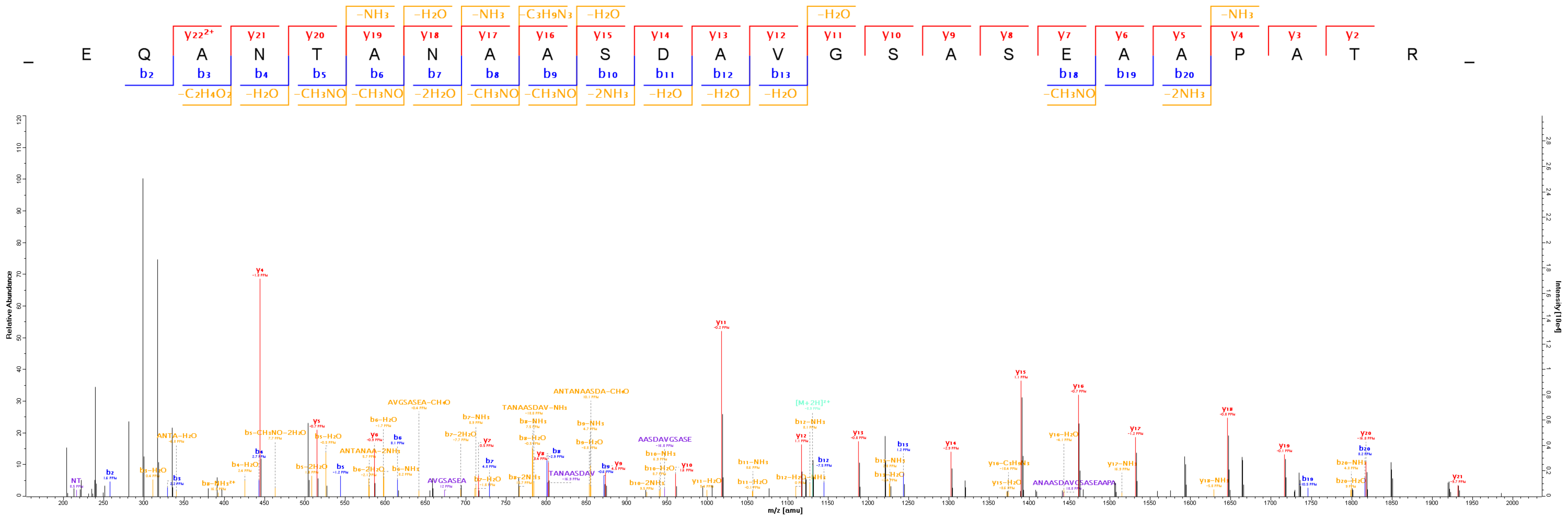


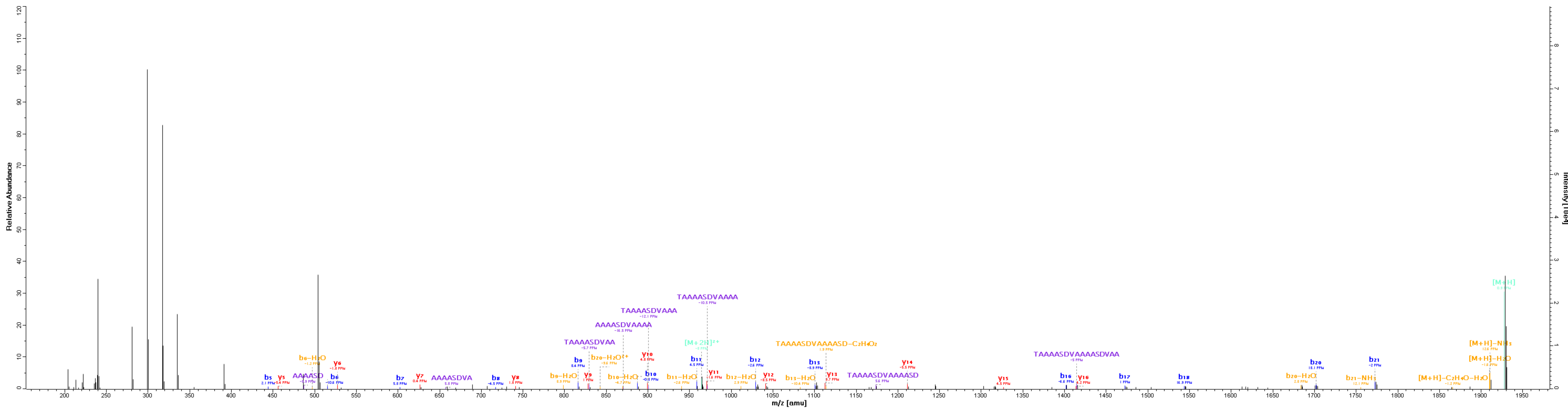
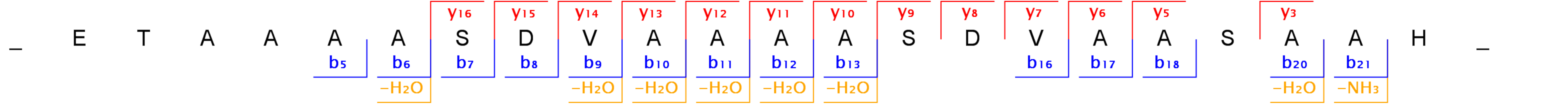


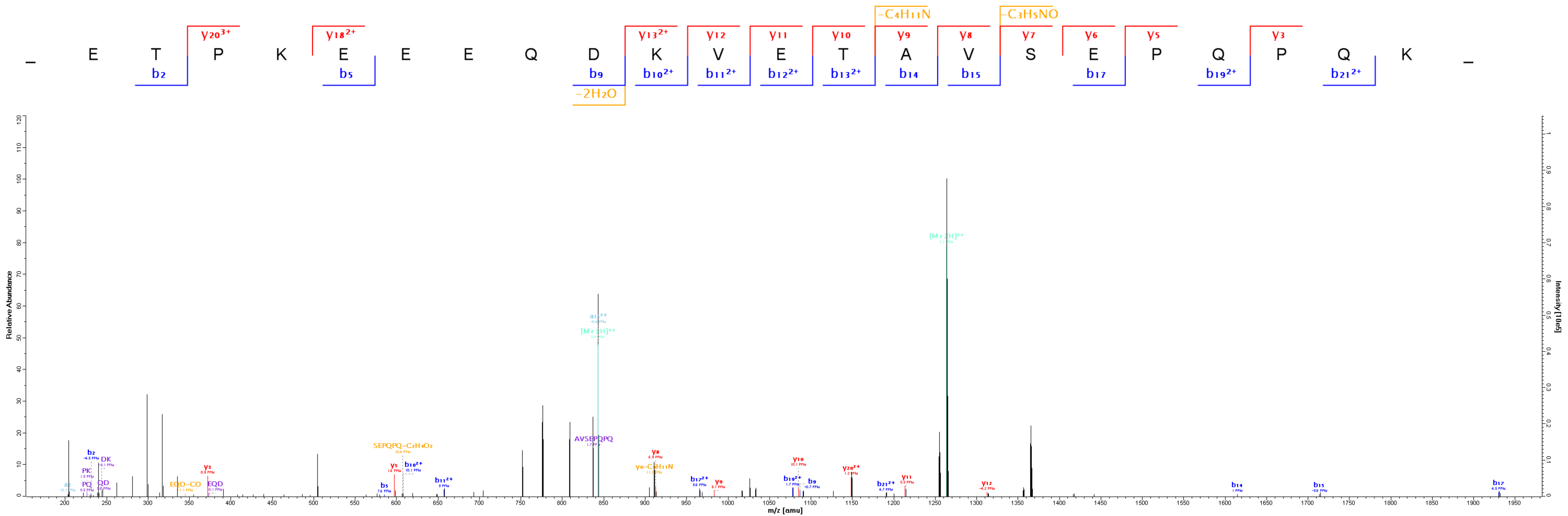


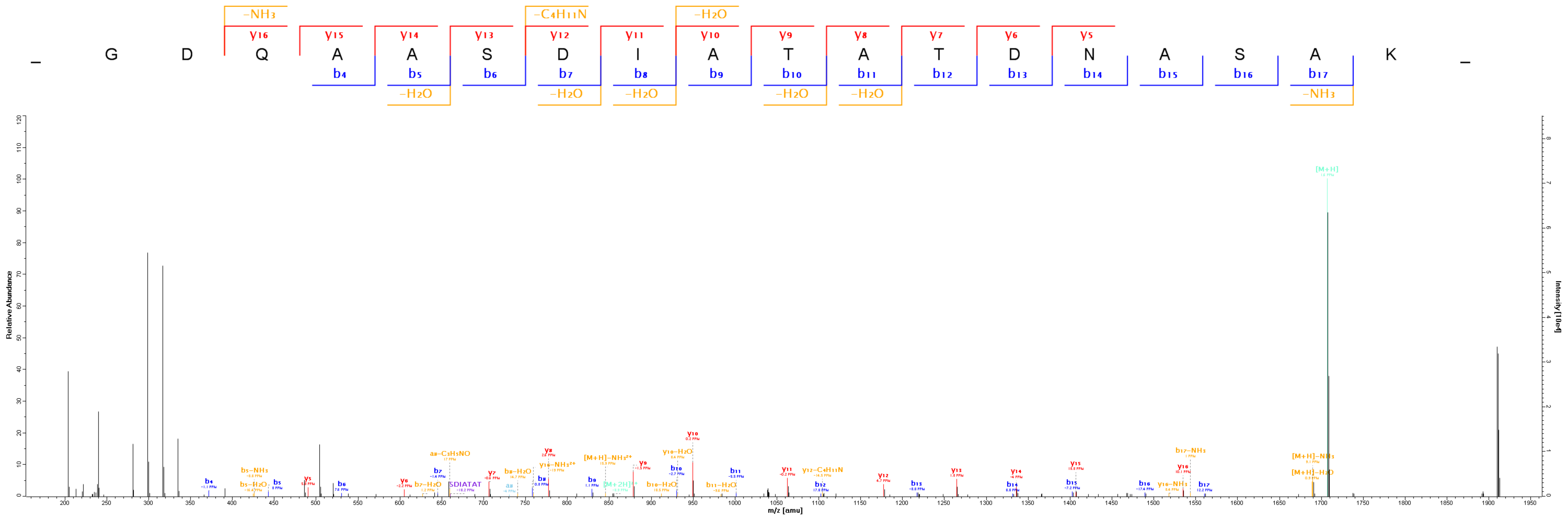


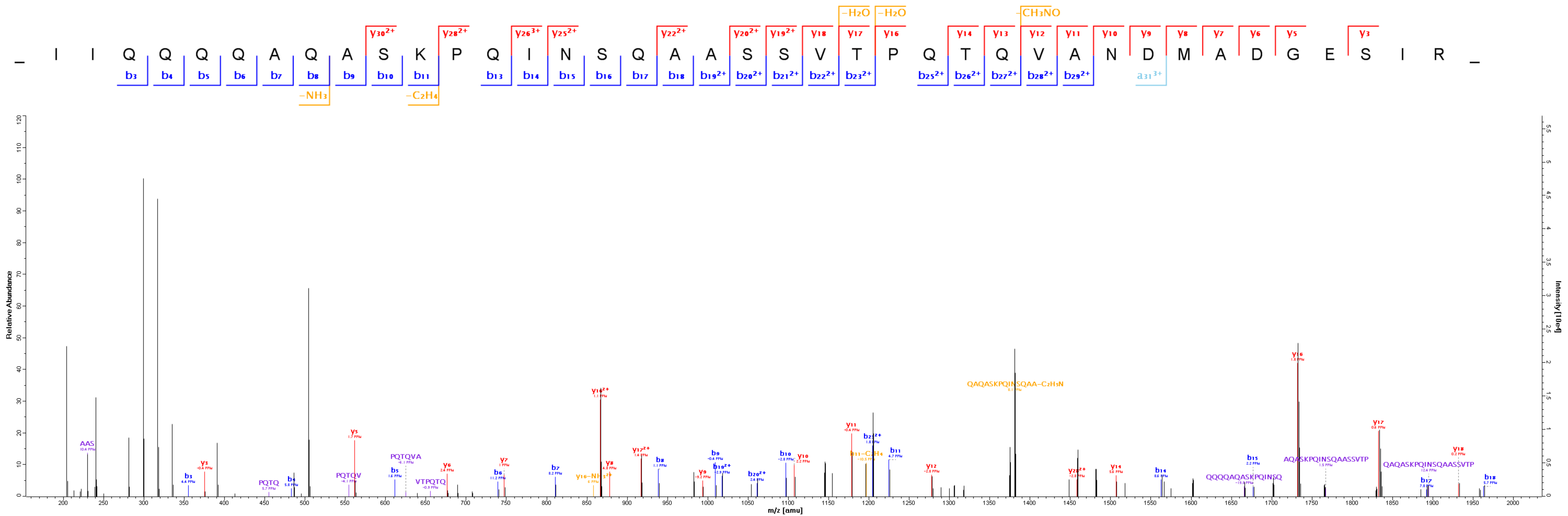


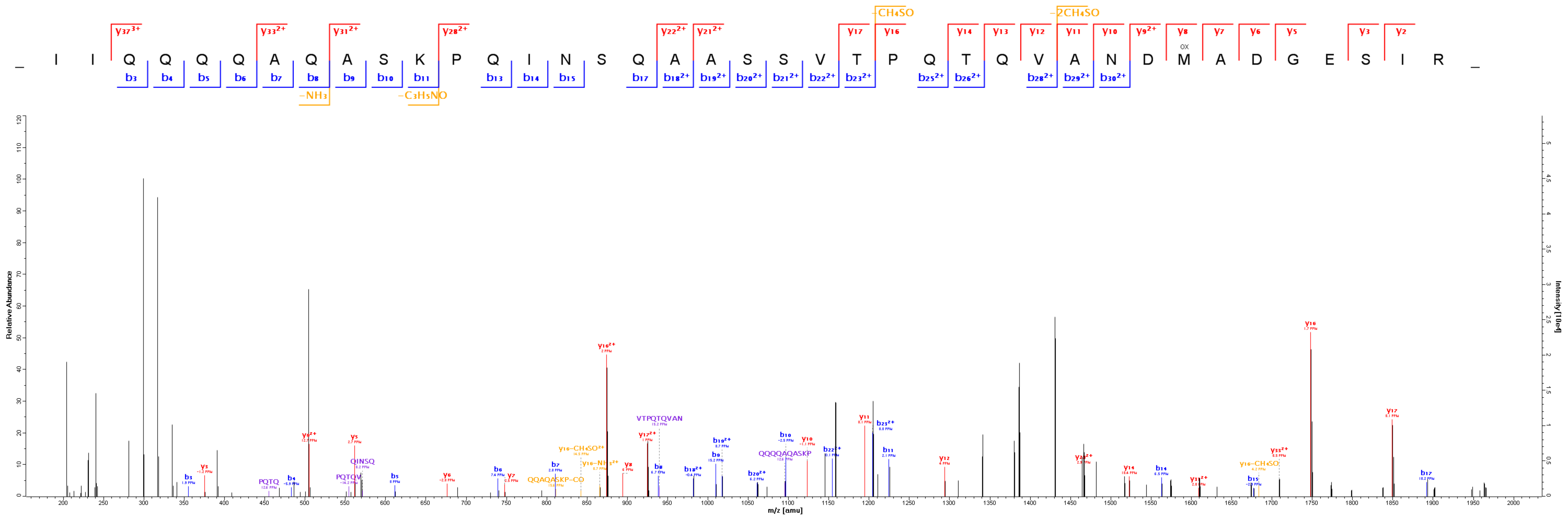


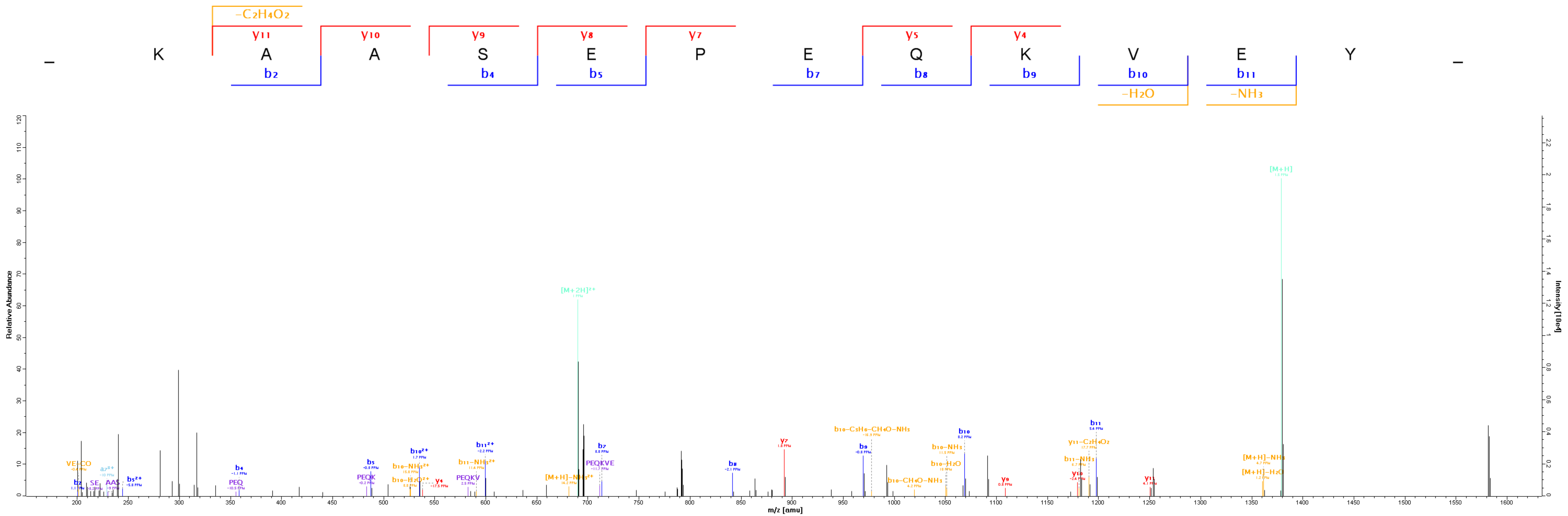


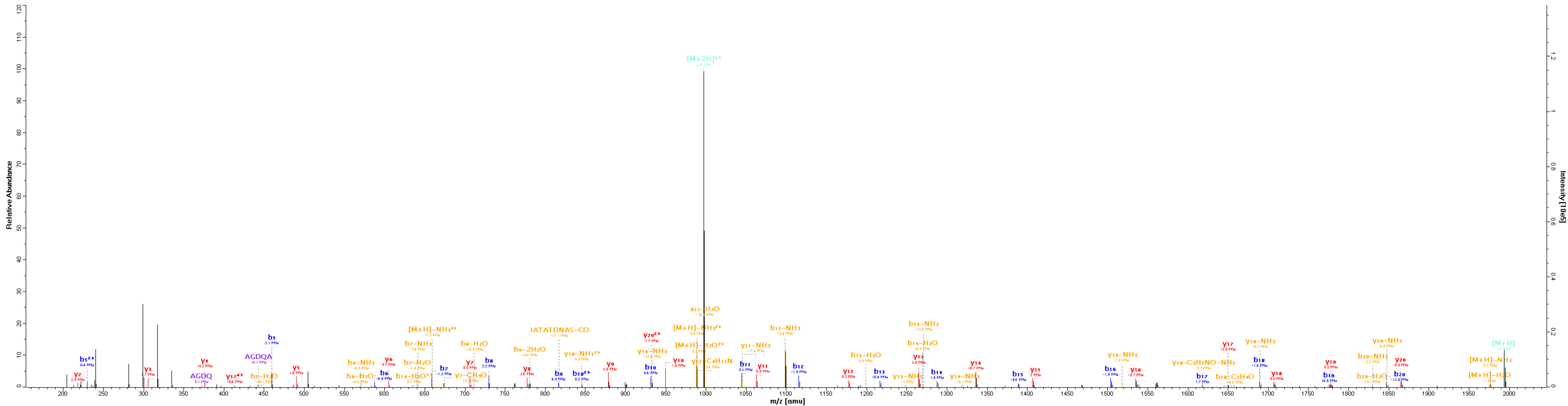
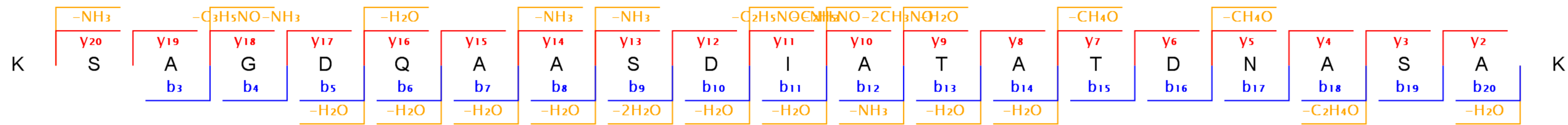


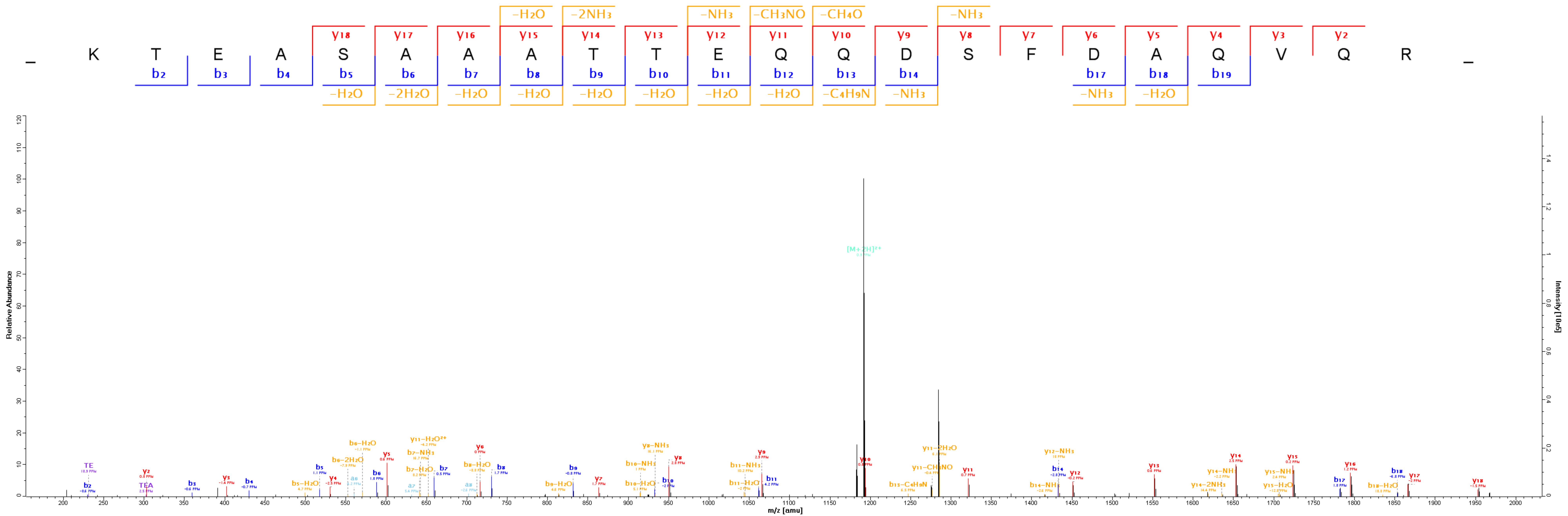


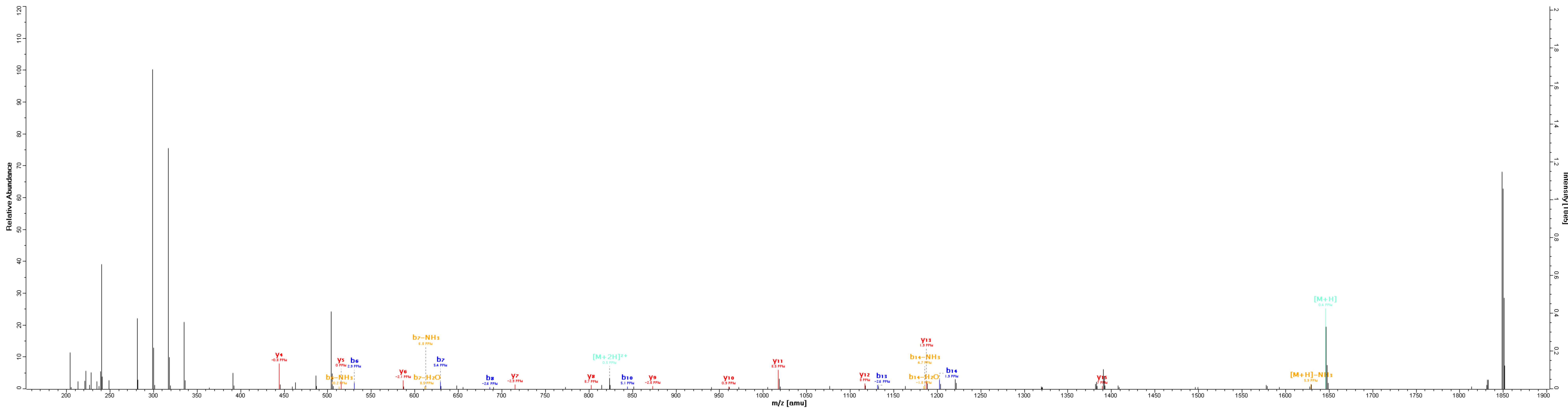
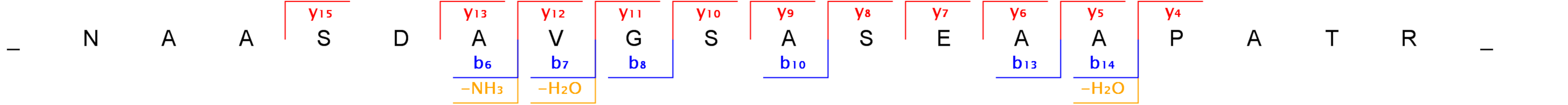


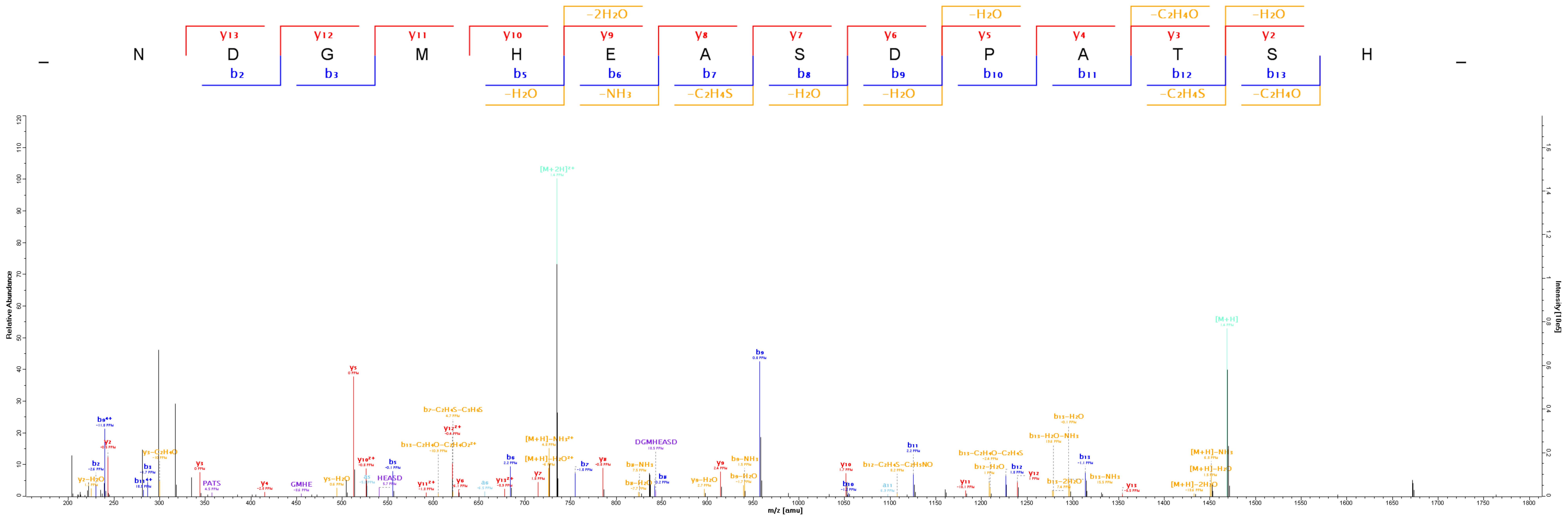


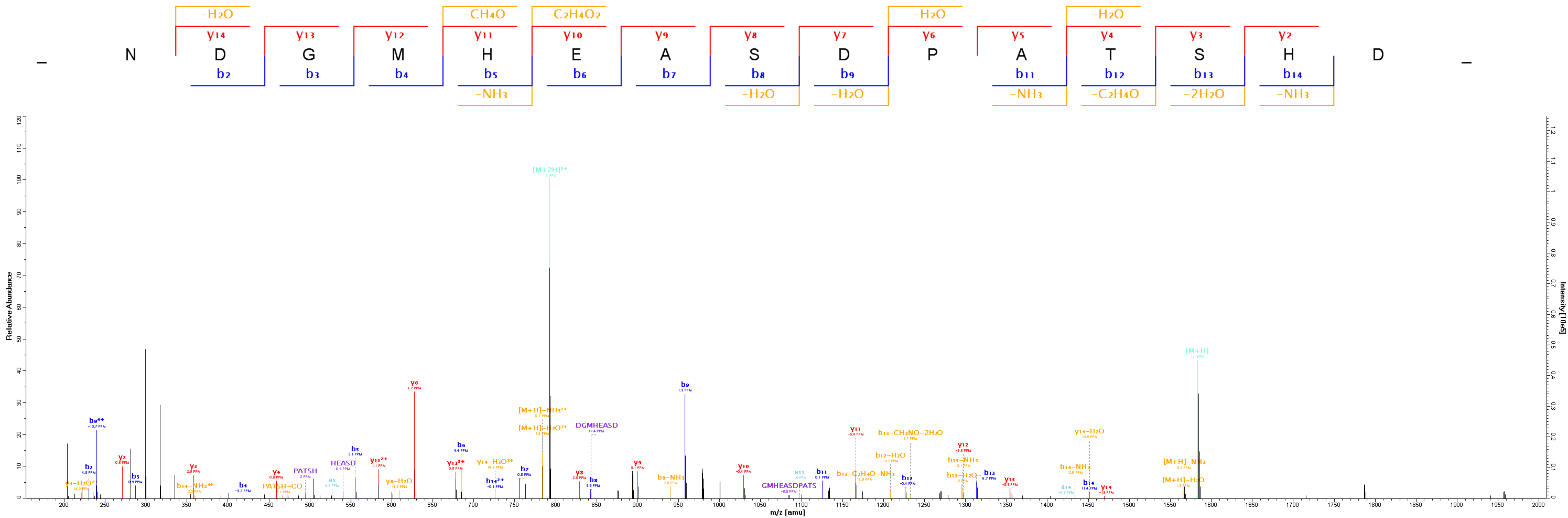


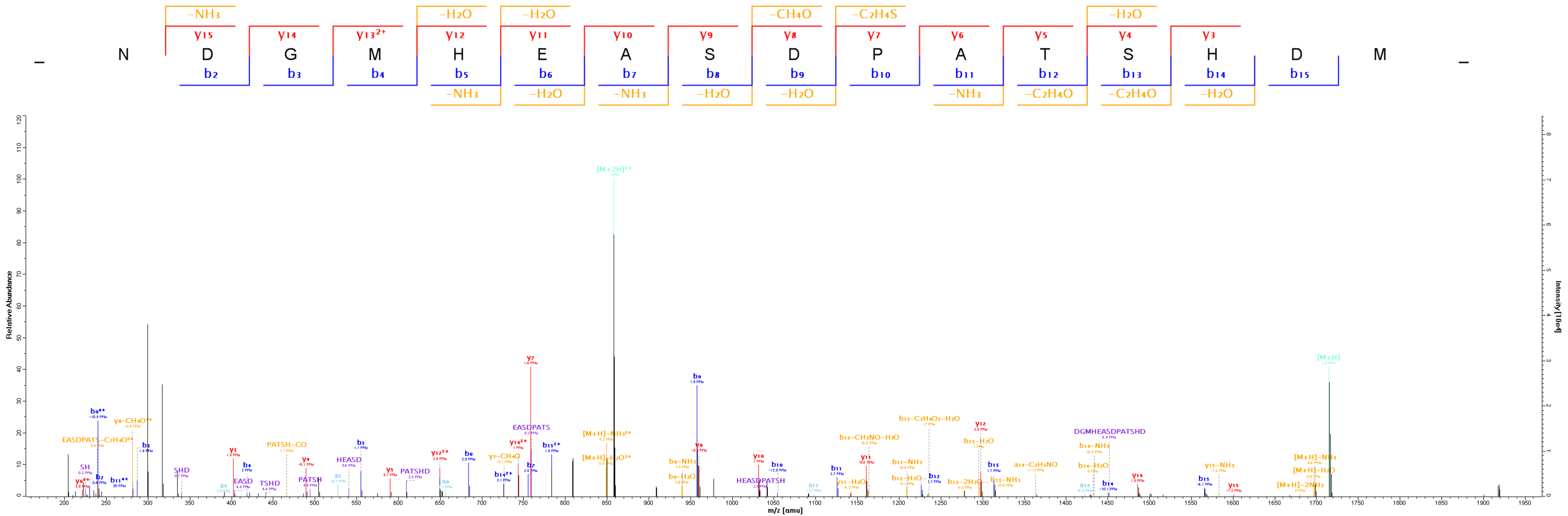


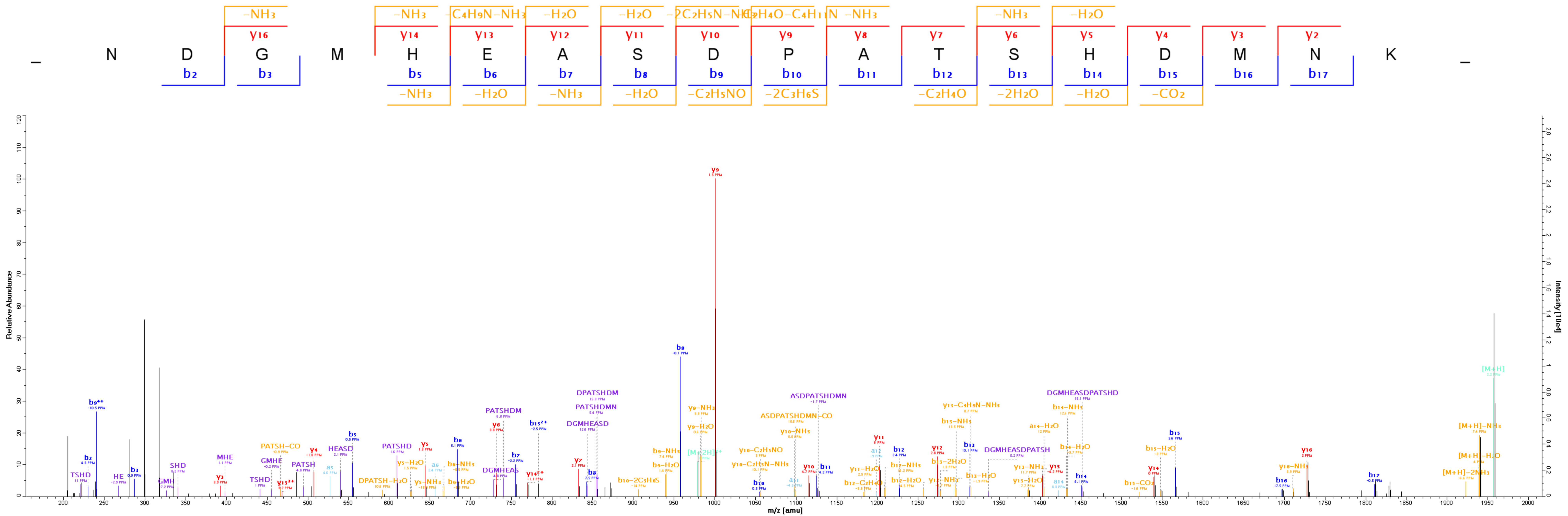




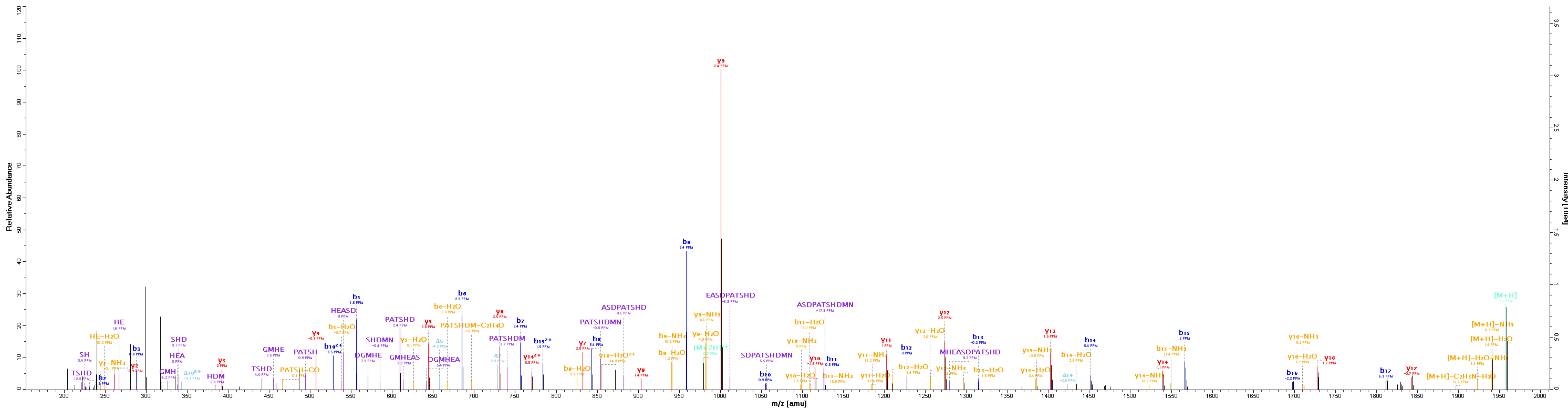
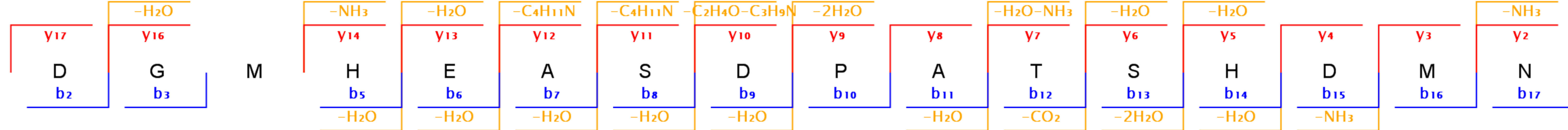


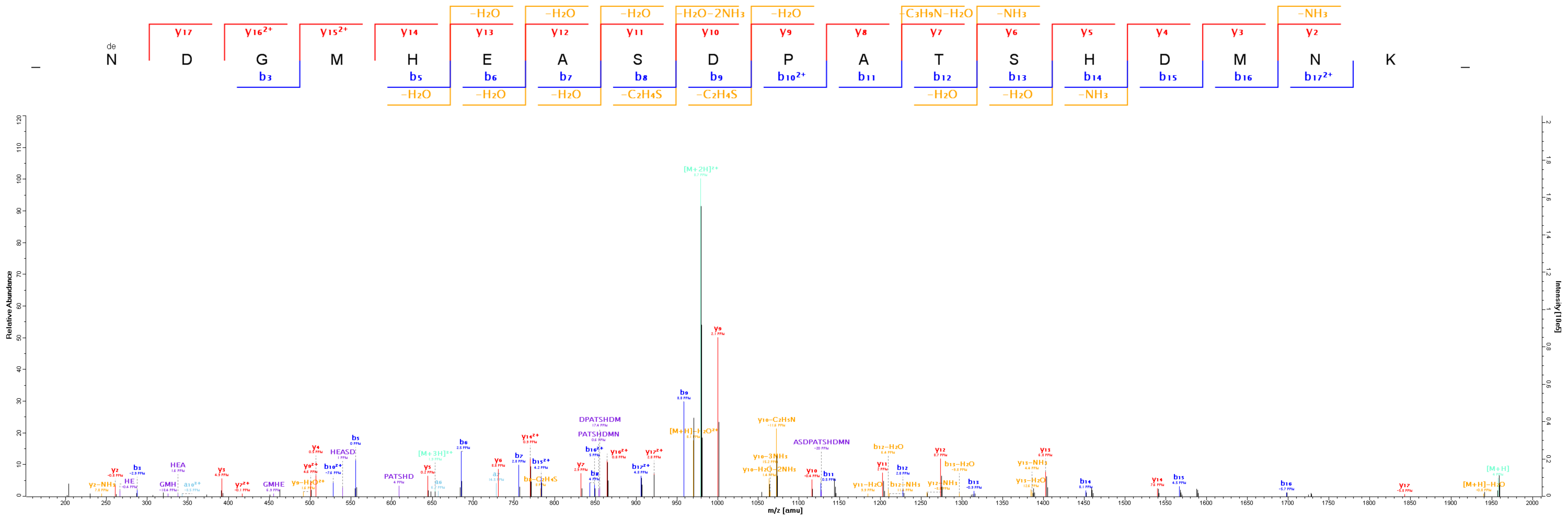


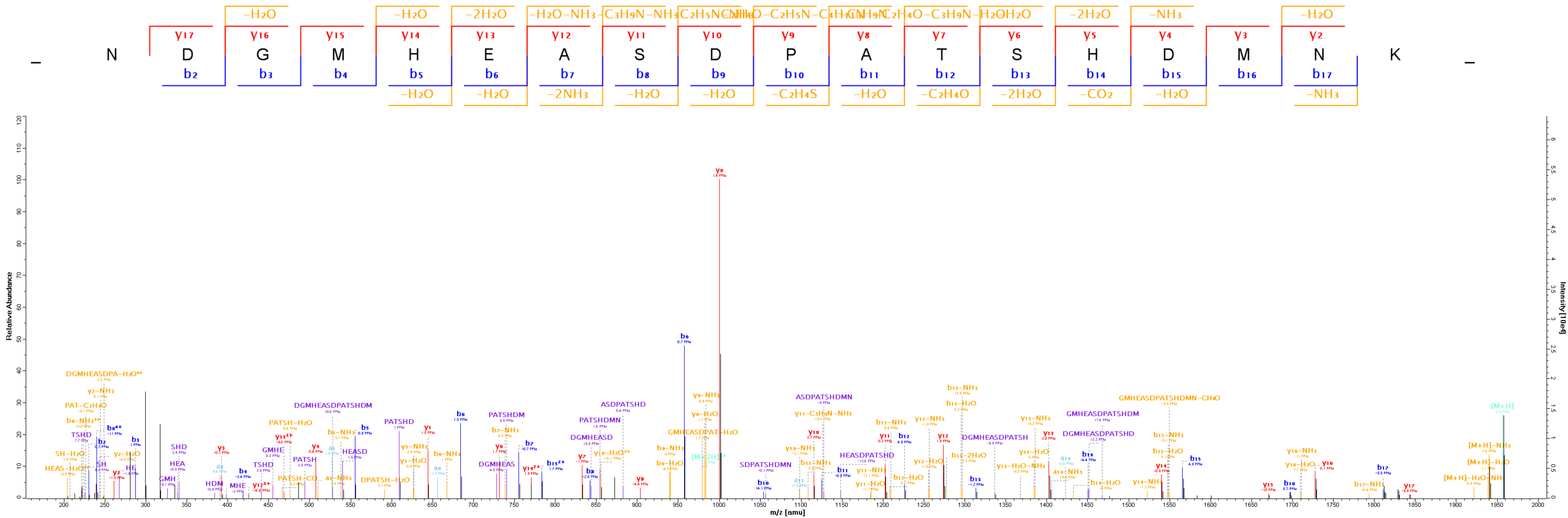


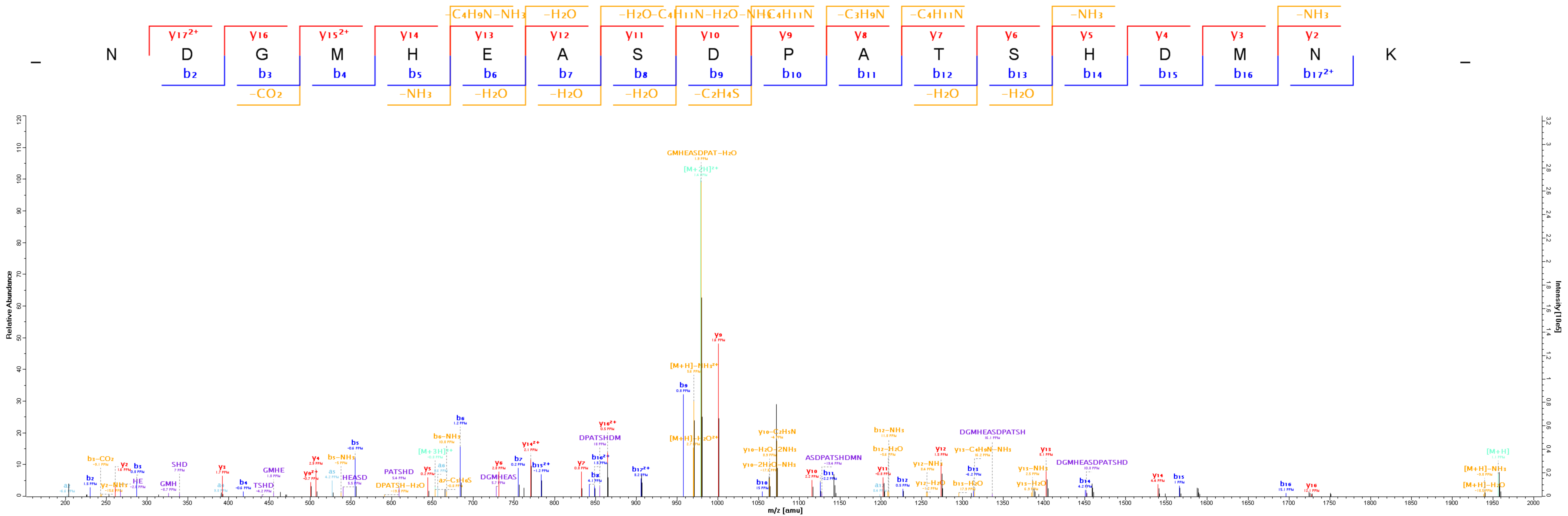


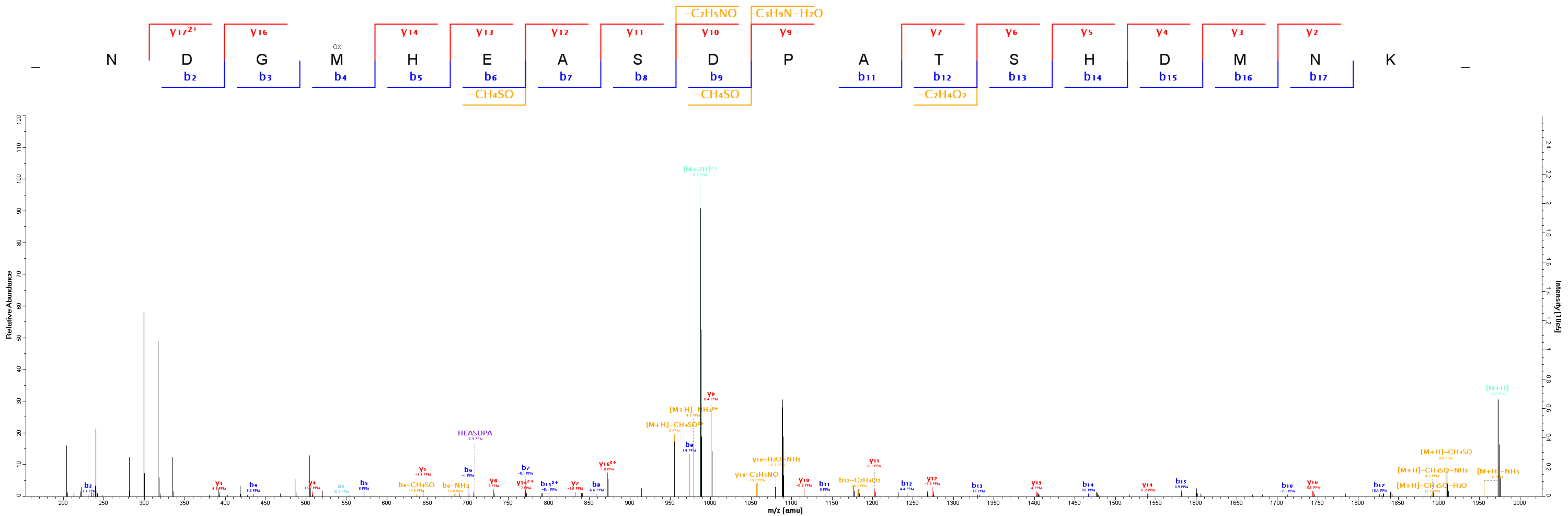
de N

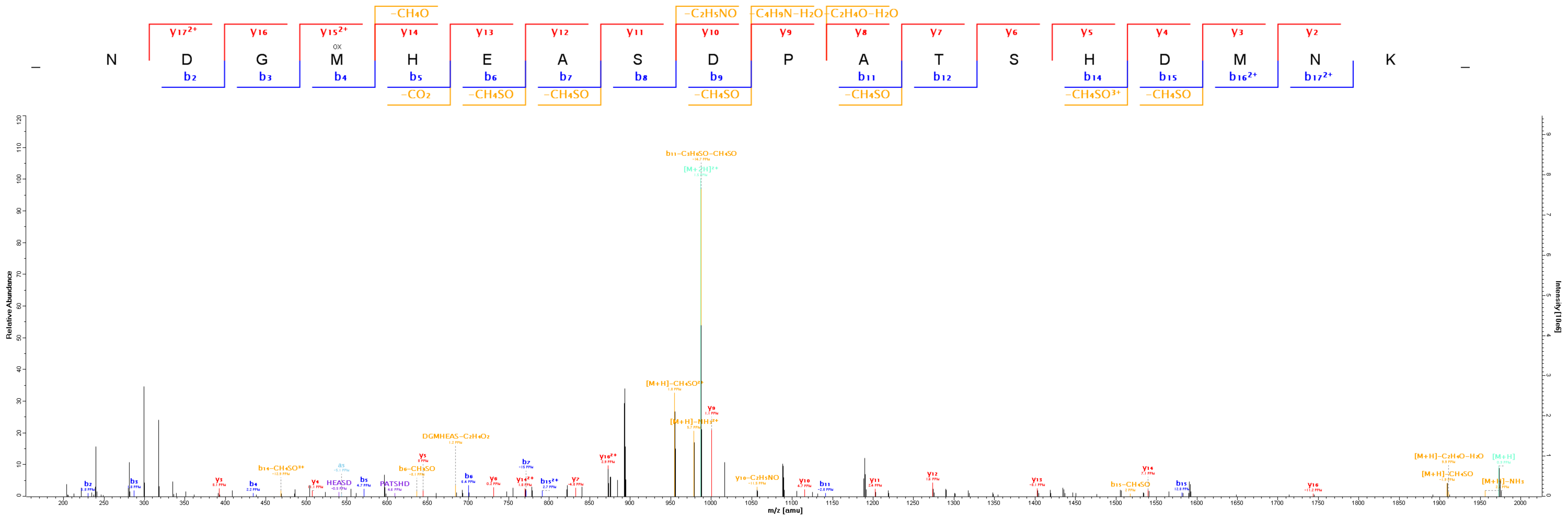


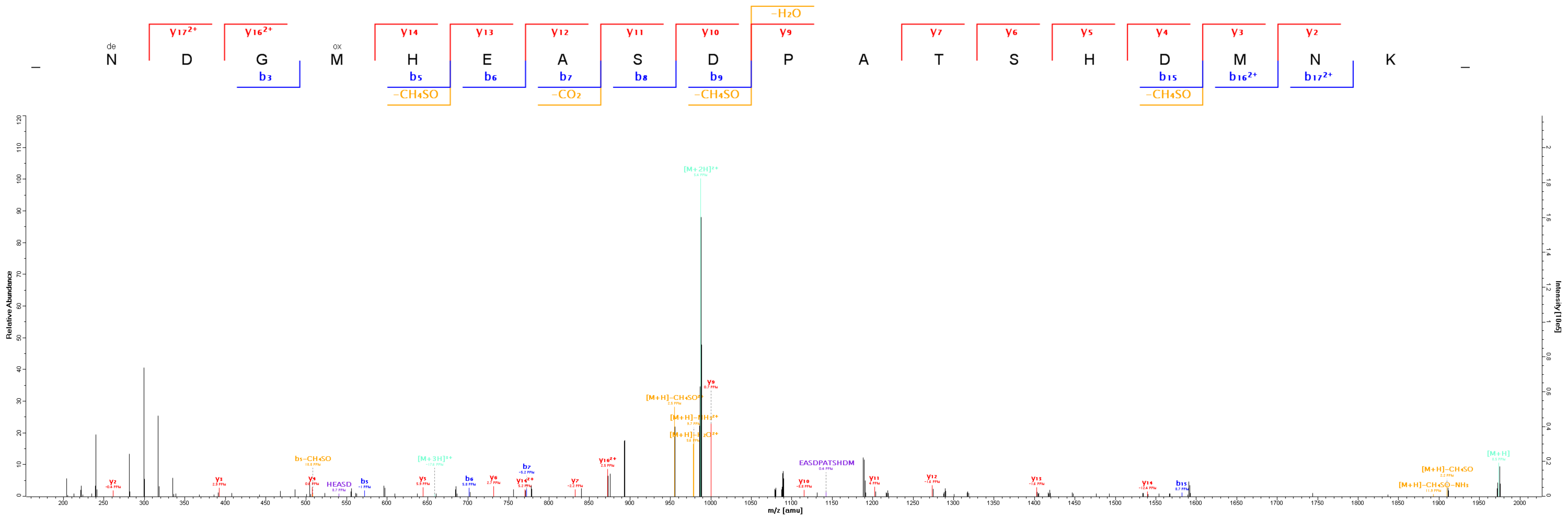


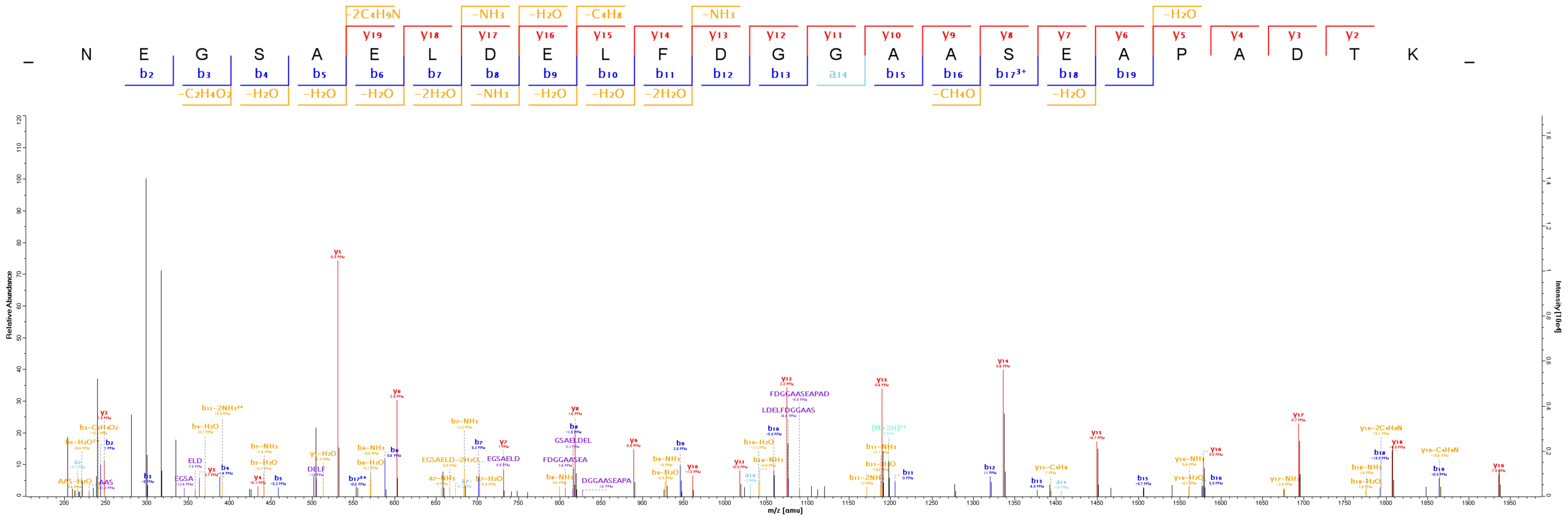












N E G S A E L D E L F D G G A A S E A P A D T K

C₄H₈

y₁₅

y₁₄

y₁₃

y₁₂

y₈

y₆

y₅

y₂

