

Additional file 1

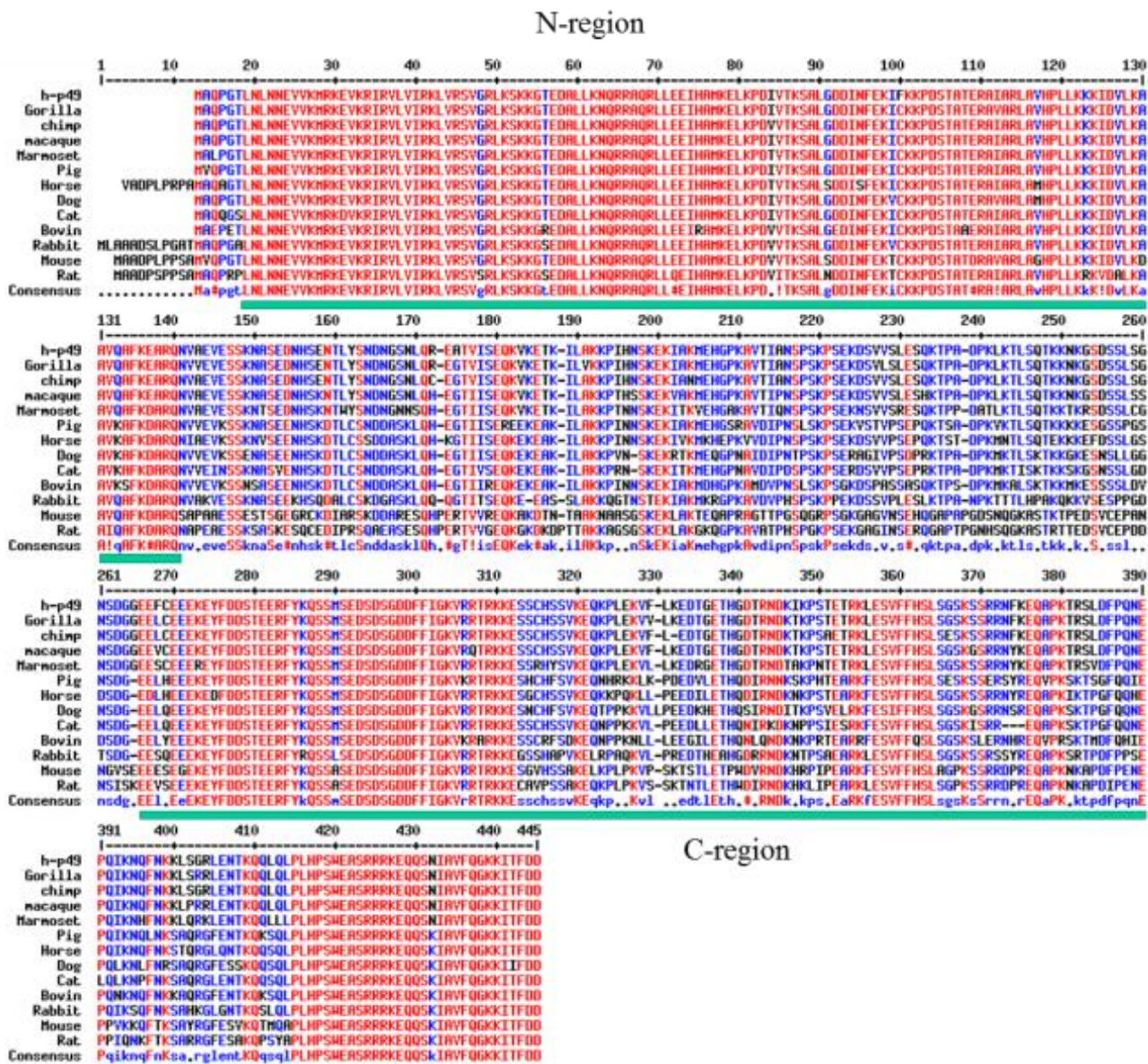
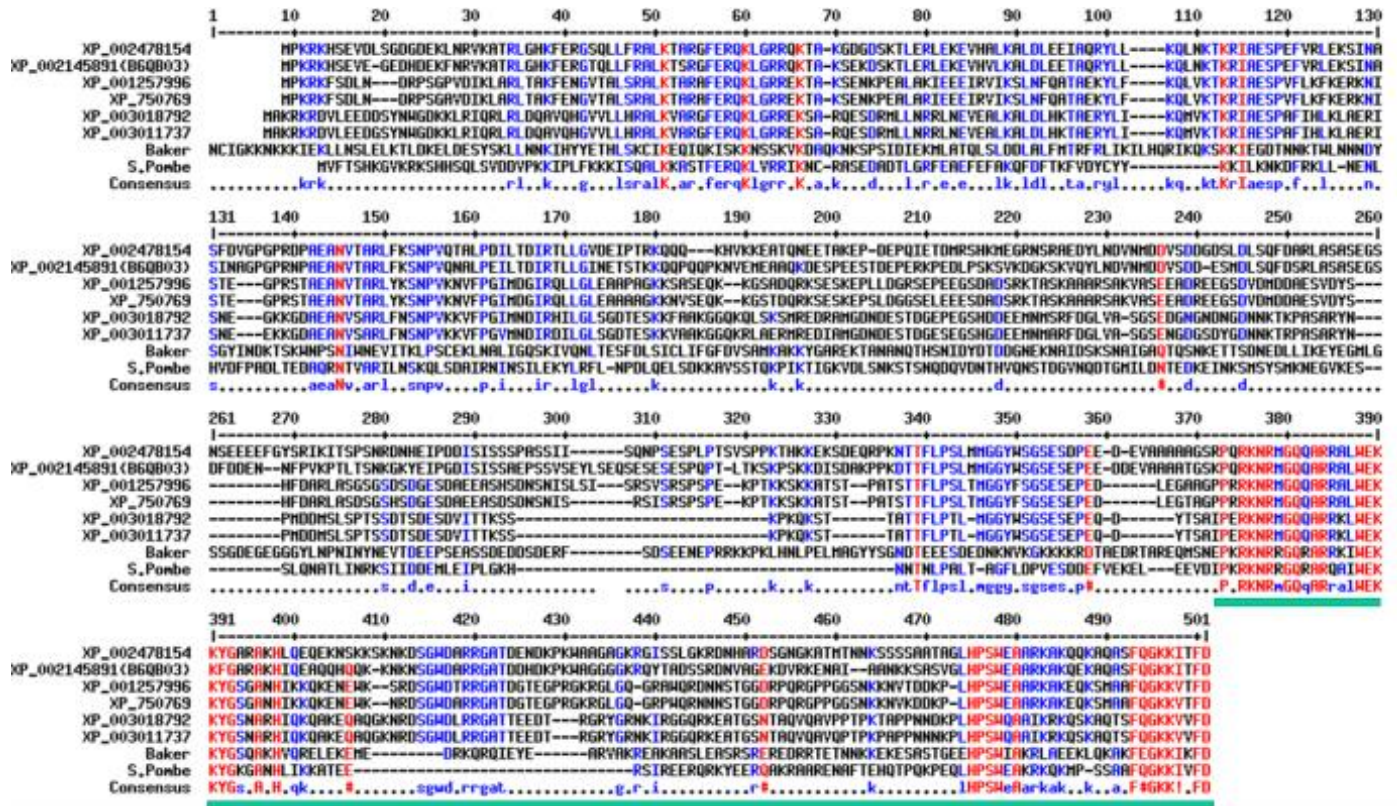


Figure S1.

Figure S1. Alignment of p49 protein sequences in 13 mammalian species. Two conserved regions (N-region and C-region) were revealed.



C-region

Figure S2.

Figure S2. Alignment of cellular morphogenesis protein (BUD22) of 8 yeast strains. One conserved regions (C-region) was revealed. The first 40 amino acids in Baker's yeast, which does not match other sequences, were not included. These 40 amino acids are: MPSESSVSIY KLDQLEYQYH YLTKSLQKFE PRYPKTAKLY.

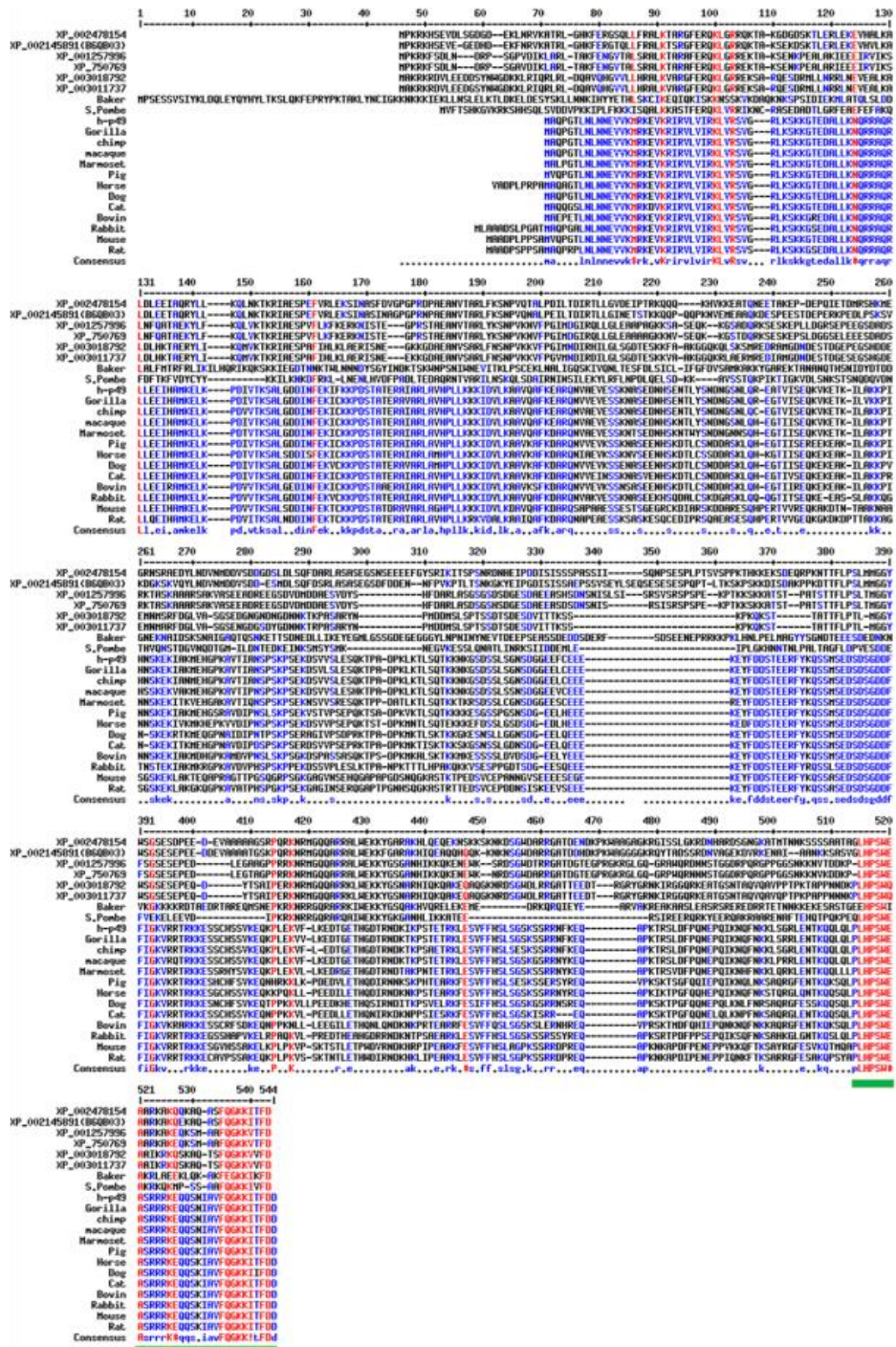


Figure S3. Highly conserved BUD2 domain

Figure S3. Alignment of p49 protein sequences of 13 mammals and cellular morphogenesis protein (BUD2) of 8 yeast strains. One conserved regions (C-region) was revealed. The first 40 amino acids in Baker's yeast, which does not match other sequences, were not included. These 40 amino acids are: MPSESSVSIY KLDQLEYQYH YLTKSLQKFE PRYPKTAKLY.