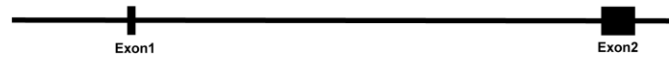
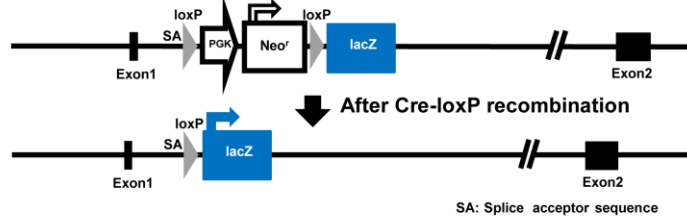


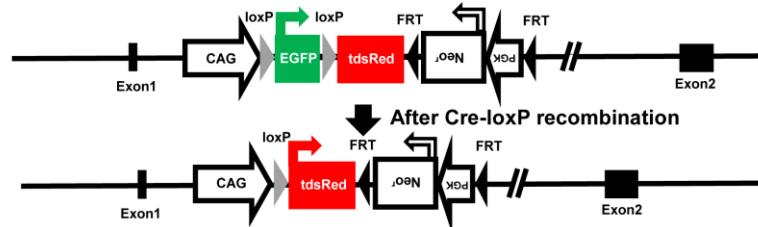
Wild-type *ROSA26* locus



R26R *ROSA26* locus

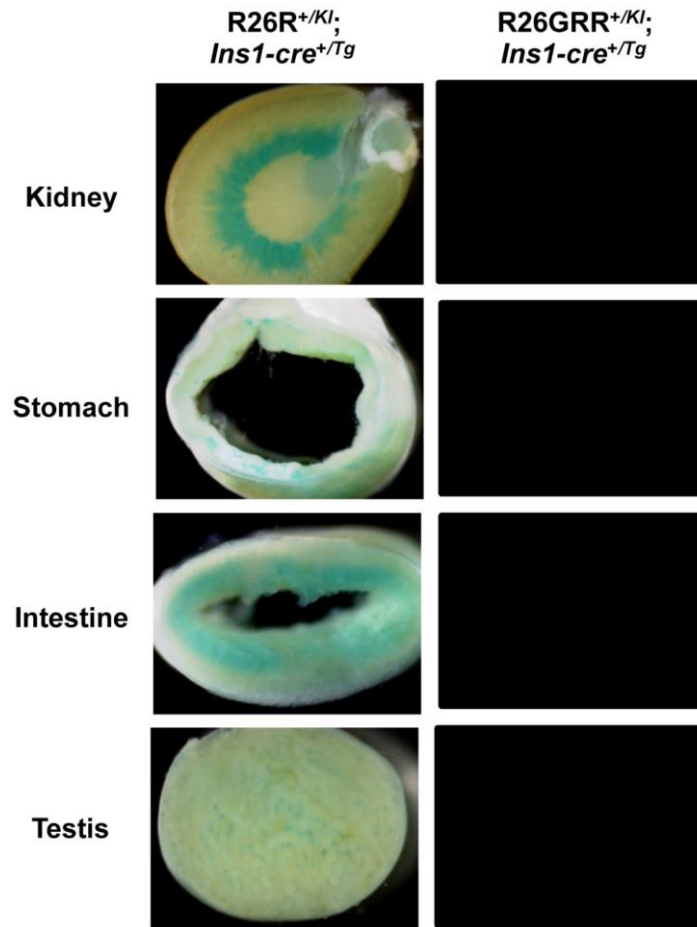


R26GRR *ROSA26* locus



Supplemental Fig. 1. Comparison of reporter gene constructs in the *ROSA26* locus

between R26R and R26GRR mice.



Supplemental Fig. 2. X-gal staining; adult R26R^{+KI}; Ins1-cre^{+Tg} and tdsRed fluorescence; adult R26GRR^{+KI}; Ins1-cre^{+Tg}. Each experiment ($n = 6$).