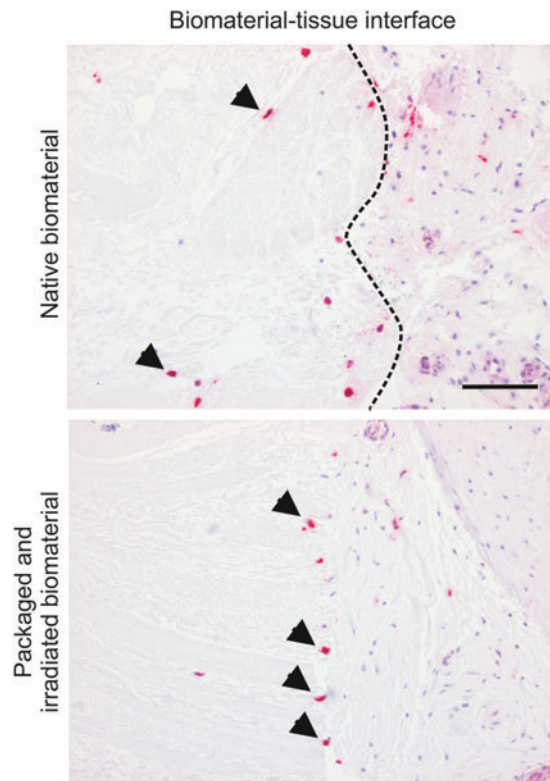


## Supplementary Data



**SUPPLEMENTARY FIG. S1.** Porcine urinary tract tissue was inserted into either native PABM or PABM irradiated with 30 kGy gamma radiation. The biomaterial–organ culture constructs were cultured for 11 days before being harvested for histology. Tissue sections were immunolabeled for CD107a expression and images of the PABM–tissue interface were captured. Porcine CD107a<sup>+</sup> cells (arrows) were observed migrating into the native PABM; conversely, CD107a<sup>+</sup> cells only lined up against the PABM that had been cross-linked by irradiation. Dotted lines delineate the biomaterial–tissue interface. Scale bars represent 100  $\mu$ m. PABM, porcine acellular bladder matrix.