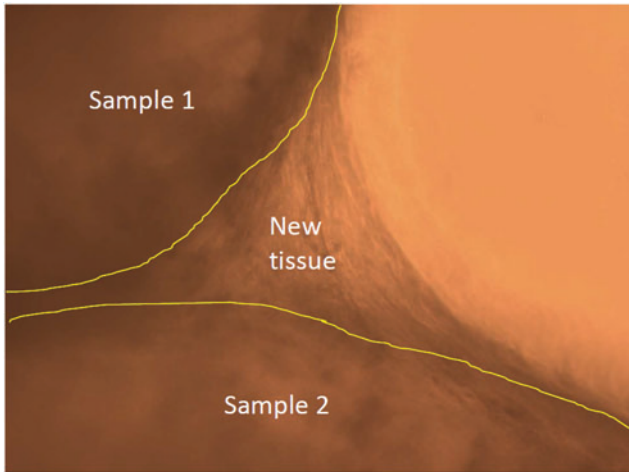


Supplementary Data



SUPPLEMENTARY FIG. S1. Human-bone-marrow-derived mesenchymal stem cell-laden mGL scaffolds cultured for 6 weeks. After 6 weeks of culture in chondrogenic medium, the three individual constructs fused with each other without visually distinguishable boundaries (yellow lines indicate the original borders of each construct).