

Supplementary Appendix

This appendix has been provided by the authors to give readers additional information about their work.

Supplement to: Furman RR, Sharman JP, Coutre SE, et al. Idelalisib and rituximab in relapsed chronic lymphocytic leukemia. *N Engl J Med*;370:997-1007. DOI: 10.1056/NEJMoa1315226

Idelalisib and Rituximab in Relapsed Chronic Lymphocytic Leukemia

Richard R. Furman, Jeff P. Sharman, Steven E. Coutre, Bruce D. Cheson, John M. Pagel, Peter Hillmen, Jacqueline C. Barrientos, Andrew D. Zelenetz, Thomas J. Kipps, Ian Flinn, Paolo Ghia, Herbert Eradat, Thomas Ervin, Nicole Lamanna, Bertrand Coiffier, Andrew R. Pettitt, Shuo Ma, Stephan Stilgenbauer, Paula Cramer, Maria Aiello, Dave M. Johnson, Langdon L. Miller, Daniel Li, Thomas M. Jahn, Roger D. Dansey, Michael Hallek, Susan M. O'Brien

This supplement contains the following items:

Table S1	p. 2
Figure S1	p. 3
Figure S2	p. 4
Ipsos Healthcare Research Study*	
Design	p. 5
Results	p. 6
IntrinsiQ Study*	
Design	p. 16
Results	p. 17

**Study results reprinted with permission from Ipsos Healthcare Research and IntrinsiQ*

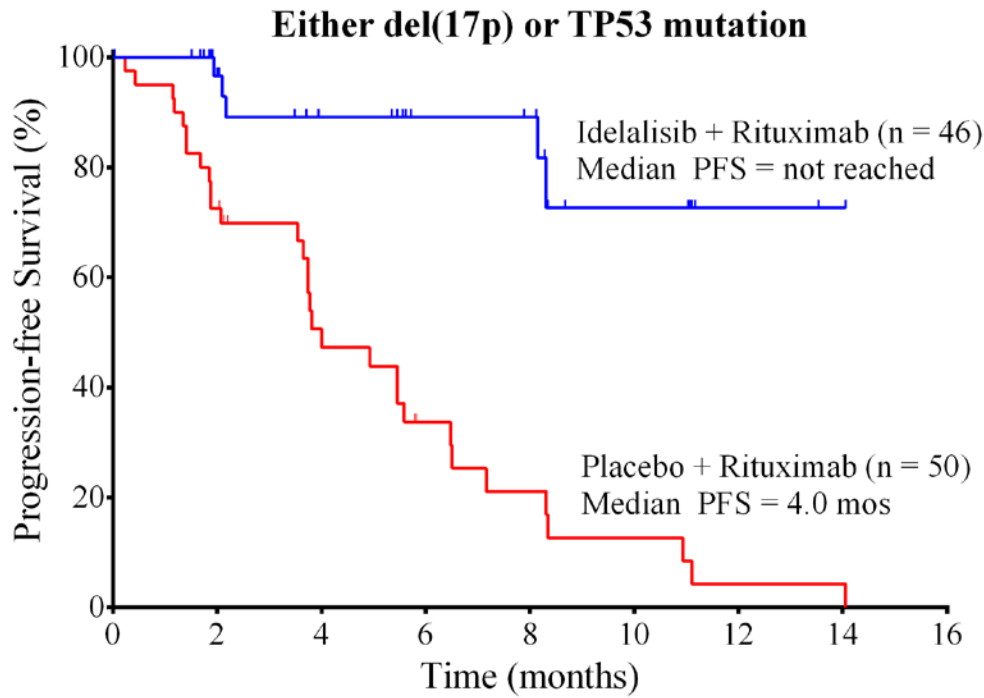
Table S1. Patient baseline characteristics and disposition

Characteristic	Idelalisib + R (n=110)	Placebo + R (n=110)
Age, median (range), years	71 (48-90)	71 (47-92)
Gender, males, %	69	62
Disease stage, %		
Rai Stage 0 / I-II / III-IV	0 / 31 / 64	1 / 26 / 65
Binet Stage A+B / C	33 / 57	33 / 55
Extent of CLL, %		
Splenomegaly ^a	79	64
Hepatomegaly ^a	54	57
Anemia (any grade / grade ≥ 3)	75 / 6	72 / 11
Neutropenia (any grade / grade ≥ 3)	34 / 17	35 / 16
Thrombocytopenia (any grade / grade ≥ 3)	62 / 16	61 / 29
ALC, median (range), cells, x 1Kμ/L	32 (0-263)	31 (0-399)
Estimated creatinine clearance, median (range), ml/min	62 (32-161)	67 (23-199)
CLL genetics, %		
Unmutated <i>IGHV</i>	83	85
del(17p) or TP53 mutation	42	45
Total CIRS score, median (range)	8 (3-18)	8 (1-18)
Prior agents, median, n (range)	3 (1-12)	3 (1-9)
Rituximab (R), %	91	88
Cyclophosphamide (C), %	64	70
Fludarabine (F), %	56	64
Bendamustine (B), %	58	54
Chlorambucil (Chl), %	31	22
Prior regimens, %		
BR	46	43
FCR	33	36
R monotherapy	32	31
FR	16	18
Chl monotherapy	18	14
Patient disposition, %		
Randomized	100	100
Ongoing on study	81	52
Discontinued study (investigator determination)		
Disease progression	5	31
Death ^b	3	8
Adverse events	5	5
Physician decision	1	1
Withdrawal by subject	5	3
Other	1	0

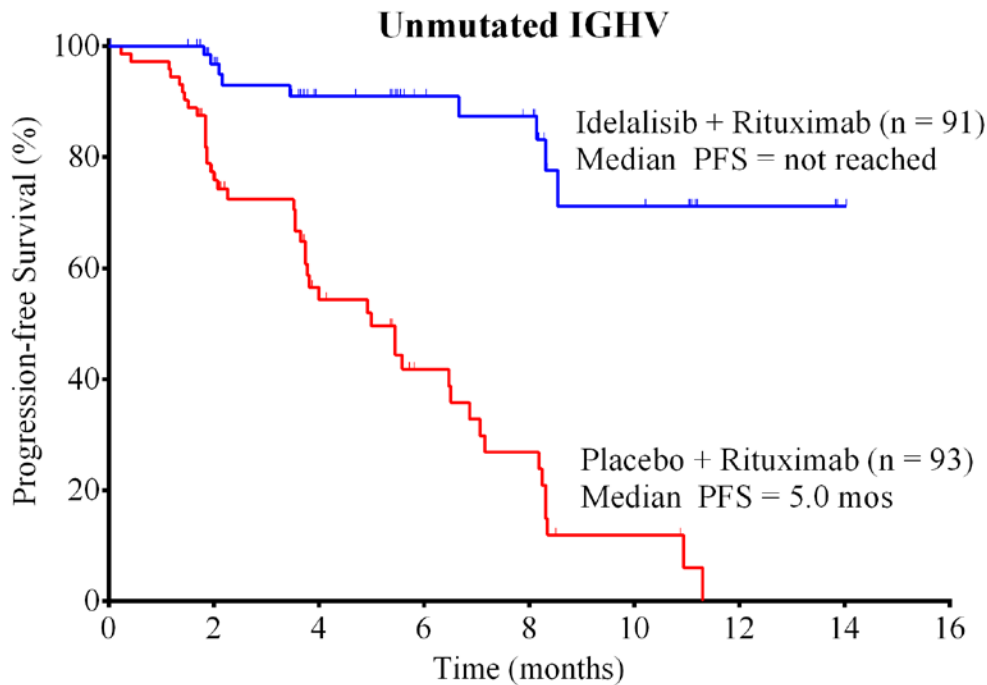
a Based on 91 patients in idelalisib + R arm and 90 patients in placebo + R arm with baseline assessment completed

b Does not include 1 death on treatment arm and 4 other deaths on control arm that occurred after patients discontinued the study due to adverse event or progression

Figure S1. KM curves of progression-free survival for select pre-specified patient sub-groups.

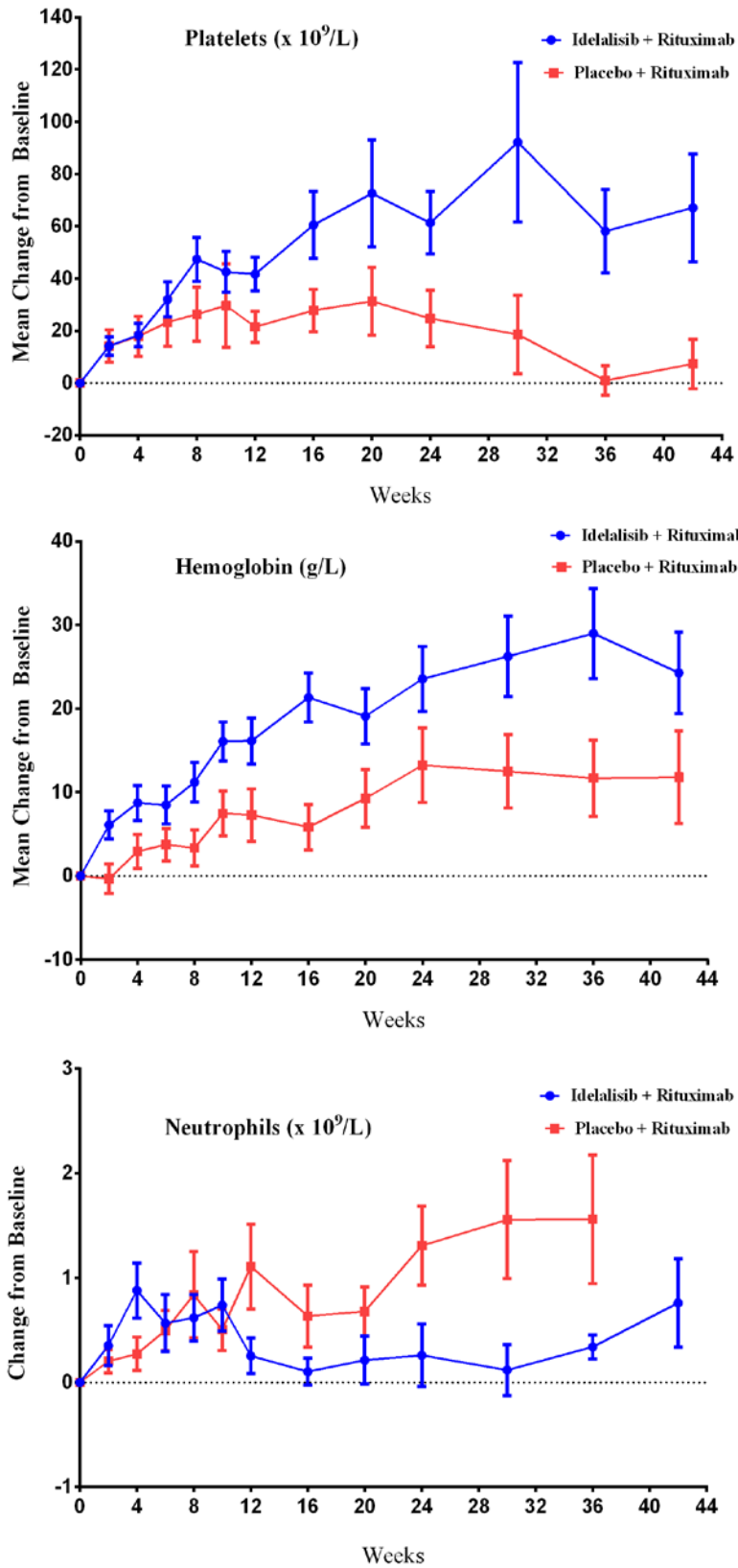


N at risk (events)		0	2	4	6	8	10	12	14
Idelalisib	46 (0)	28 (1)	19 (3)	14 (3)	13 (3)	6 (5)	2 (5)	1 (5)	0 (5)
Placebo	50 (0)	29 (11)	15 (18)	8 (23)	5 (26)	3 (28)	1 (30)	1 (30)	0 (31)



N at risk (events)		0	2	4	6	8	10	12	14
Idelalisib	91 (0)	55 (2)	34 (5)	26 (5)	23 (6)	11 (9)	3 (9)	1 (9)	0 (9)
Placebo	93 (0)	51 (16)	25 (27)	14 (33)	9 (38)	3 (43)	0 (45)	0 (45)	0 (45)

Figure S2. Mean change from baseline of laboratory parameters over time.



Ipsos Healthcare Background

Ipsos Healthcare (<http://www.ipsos.com/marketing-healthcare/>) is a research organization focused on understanding the motivations, behavior and influences of the multiple stakeholders involved in healthcare industry issues. Research in oncology utilizes a large syndicated database of cancer treatment and includes key patient and treatment-related metrics across all tumor types and more than 20 global markets. Specific data collection can be modeled to clarify complex questions including treatment regimen type, initiation and duration of current and prior therapy, as well as maintenance and sequential therapy.

Gilead Project

Gilead Sciences contracted Ipsos Healthcare to collect data from 5 representative countries in the EU to evaluate trend use of agents/regimens across lines of therapy in chronic lymphocytic leukemia during the years 2010, 2011, 2012, through mid-2013.

Methodology

Ipsos Healthcare projected rituximab use as single-agent therapy or part of combination regimens for the treatment of CLL in EU5 Countries (UK, France, Germany, Italy, and Spain) based on patient diaries. Representative panels of cancer treating physicians (N = 509) completed forms directly from reviews of patients' charts and provided information on how many patients in their practices received certain therapies (either mono-therapies or combination regimens). A total of 104 physicians provided CLL patient information across first-, second-, third-line and beyond CLL treatments. According to their most recent annually projected data, a total of 37,119 patients with CLL are estimated to have been treated in the EU5 with anticancer drug therapy between July 2012 and June 2013.

Data Interpretation

According to the data collected on the above patients, there is higher rituximab monotherapy use in later lines of therapy for CLL (first line, 0.3%; second line, 8.2%, third line or more, 22.1%). It should be noted that the data indicate rituximab use in the EU is now more common in clinical practice than chlorambucil use (22.1% vs 9.2%, respectively) as third-line treatment and above in patients with CLL.

The pertinent excerpt of the data follows, including the following tables: 1) 5EU CLL line 2+ regimens (excluding maintenance treatment) and 2) 5EU CLL Line 3+ regimens.

[TOC](#)

5EU CLL Line 2+ (excluding line 2 maintenance) regimens
 Projected annual treatments

	Jan 10 - Dec 10	Apr 10 - Mar 11	Jul 10 - Jun 11	Oct 10 - Sep 11	Jan 11 - Dec 11	Apr 11 - Mar 12	Jul 11 - Jun 12	Oct 11 - Sep 12	Jan 12 - Dec 12	Apr 12 - Mar 13	Jul 12 - Jun 13
Sample base	392	327	296	329	333	418	480	484	474	438	420
Projected	10791	11233	13224	14392	15225	16870	16832	16588	17160	15916	14974
Bendamustine/ Rituximab	2094 19%	2781 25%	3528 27%	4027 28%	4057 27%	4455 26%	4776 28%	5401 33%	5683 33%	5078 32%	4943 33%
Cyclophosphamide/ Fludarabine/ Rituximab	2756 26%	2711 24%	2498 19%	2507 17%	2557 17%	3021 18%	3309 20%	3152 19%	3443 20%	2775 17%	2333 16%
Chlorambucil	607 6%	521 5%	1009 8%	1263 9%	1634 11%	1786 11%	1463 9%	1226 7%	1279 7%	1387 9%	1130 8%
Rituximab	303 3%	201 2%	132 1%	152 1%	168 1%	250 1%	478 3%	672 4%	873 5%	1200 8%	1167 8%
Fludarabine	317 3%	236 2%	253 2%	322 2%	313 2%	433 3%	469 3%	545 3%	908 5%	896 6%	793 5%
Bendamustine	202 2%	104 1%	195 1%	262 2%	406 3%	754 4%	863 5%	947 6%	902 5%	740 5%	694 5%
Fludarabine/ Rituximab	155 1%	149 1%	136 1%	136 1%	121 1%	66 *	53 *	88 1%	125 1%	329 2%	463 3%
Ofatumumab	102 1%	102 1%	95 1%	110 1%	82 1%	96 1%	140 1%	139 1%	265 2%	333 2%	458 3%
Chlorambucil/ Rituximab	429 4%	329 3%	418 3%	345 2%	532 3%	748 4%	680 4%	611 4%	492 3%	344 2%	381 3%
Chlorambucil/ Prednis(ol)one	377 3%	321 3%	428 3%	509 4%	521 3%	557 3%	389 2%	281 2%	251 1%	341 2%	374 2%
Prednis(ol)one	- -	- -	198 1%	370 3%	522 3%	672 4%	545 3%	478 3%	442 3%	359 2%	415 3%
Alemtuzumab	448 4%	316 3%	394 3%	380 3%	459 3%	548 3%	548 3%	504 3%	412 2%	340 2%	308 2%
Cyclophosphamide/ Doxorubicin/ Prednis(ol)one/ Rituximab/ Vincristine	255 2%	255 2%	218 2%	34 *	48 *	68 *	114 1%	128 1%	117 1%	204 1%	178 1%
Cyclophosphamide/ Prednis(ol)one/ Vincristine	133 1%	239 2%	220 2%	160 1%	177 1%	59 *	91 1%	55 *	60 *	194 1%	163 1%
Cyclophosphamide/ Prednis(ol)one/ Rituximab/ Vincristine	248 2%	290 3%	280 2%	330 2%	348 2%	503 3%	525 3%	379 2%	317 2%	95 1%	93 1%
Melphalan	-	-	-	-	-	-	-	-	34	54	54

	Jan 10 - Dec 10	Apr 10 - Mar 11	Jul 10 - Jun 11	Oct 10 - Sep 11	Jan 11 - Dec 11	Apr 11 - Mar 12	Jul 11 - Jun 12	Oct 11 - Sep 12	Jan 12 - Dec 12	Apr 12 - Mar 13	Jul 12 - Jun 13
Cyclophosphamide/ Methylprednisolone/ Rituximab/ Vincristine	- 77 1%	- -	- -	- -	- 83 1%	- 83 *	- 105 1%	- 105 1%	* 22 *	* 45 *	* 43 *
Mercaptopurine/ Prednis(ol)one	- -	- -	- -	8 *	8 *	8 *	8 *	- -	22 *	22 *	41 *
Mercaptopurine/ Rituximab	- -	- -	- -	- -	14 *	43 *	43 *	101 1%	108 1%	98 1%	98 1%
Cyclophosphamide/ Doxorubicin/ Prednis(ol)one/ Rituximab	- -	- -	- -	- -	- -	- -	- -	- -	38 *	38 *	38 *
Cyclophosphamide/ Pentostatin/ Rituximab	47 *	85 1%	114 1%	193 1%	160 1%	146 1%	102 1%	22 *	22 *	- -	36 *
Cisplatin/ Cytarabine	- -	- -	- -	- -	- -	- -	- -	- -	- -	- -	33 *
Bendamustine/ Dexamethasone/ Rituximab	33 *	33 *	33 *	33 *	21 *	21 *	21 *	21 *	- -	- -	32 *
Chlorambucil/ Dexamethasone	- -	- -	- -	- -	- -	- -	- -	- -	- -	- -	32 *
Bendamustine/ Cytarabine/ Rituximab	- -	- -	- -	- -	- -	- -	- -	- -	- -	- -	32 *
Cyclophosphamide/ Rituximab	147 1%	184 2%	262 2%	341 2%	210 1%	172 1%	95 1%	- -	- -	- -	32 *
Cyclophosphamide/ Fludarabine	441 4%	340 3%	360 3%	471 3%	511 3%	491 3%	423 3%	328 2%	236 1%	238 1%	94 1%
Cyclophosphamide/ Ofatumumab/ Pentostatin	- -	- -	- -	- -	- -	- -	- -	- -	- -	31 *	31 *
Lenalidomide	18 *	18 *	- -	27 *	27 *	27 *	27 *	- -	- -	- -	31 *
Bendamustine/ Methylprednisolone/ Ofatumumab	- -	- -	- -	- -	- -	- -	- -	- -	- -	- -	30 *
Doxorubicin	- -	- -	- -	- -	- -	- -	- -	- -	28 *	28 *	28 *
Cyclophosphamide/ Doxorubicin/ Vincristine	54 *	54 *	36 *	36 *	- -	- -	- -	- -	28 *	28 *	28 *
Alemtuzumab/ Dexamethasone	20 *	- -	104 1%	104 1%	104 1%	175 1%	71 *	86 1%	86 *	14 *	40 *
Cortisone/ Mercaptopurine	- -	- -	- -	- -	- -	- -	- -	7 *	28 *	28 *	28 *
Mercaptopurine/ Prednis(ol)one/ Rituximab	- -	- -	- -	54 *	54 *	54 *	54 *	64 *	64 *	64 *	83 1%

	Jan 10 - Dec 10	Apr 10 - Mar 11	Jul 10 - Jun 11	Oct 10 - Sep 11	Jan 11 - Dec 11	Apr 11 - Mar 12	Jul 11 - Jun 12	Oct 11 - Sep 12	Jan 12 - Dec 12	Apr 12 - Mar 13	Jul 12 - Jun 13
Cyclophosphamide/ Rituximab/ Vincristine	38 *	112 1%	112 1%	112 1%	75 *	- -	- -	- -	- -	- -	- -
Cytarabine/ Dexamethasone/ Oxaliplatin	- -	90 1%	90 1%	90 1%	90 1%	- -	- -	- -	- -	- -	- -
Cytarabine/ Dexamethasone/ Oxaliplatin/ Rituximab	33 *	33 *	33 *	33 *	- -	- -	- -	- -	- -	- -	- -
Cytarabine/ Fludarabine/ Rituximab	- -	- -	27 *	27 *	27 *	27 *	- -	- -	- -	- -	- -
Dexamethasone	15 *	- -	- -	- -	- -	- -	- -	- -	- -	- -	- -
Dexamethasone/ Doxorubicin/ Vincristine	38 *	38 *	38 *	- -	- -	- -	- -	- -	- -	- -	- -
Dexamethasone/ Fludarabine	- -	- -	- -	- -	100 1%	100 1%	100 1%	100 1%	- -	- -	- -
Dexamethasone/ Fludarabine/ Mitoxantrone/ Rituximab	10 *	- -	- -	- -	- -	- -	- -	- -	- -	- -	- -
Dexamethasone/ Rituximab	31 *	- -	- -	- -	- -	30 *	30 *	30 *	30 *	- -	- -
Etoposide/ Ifosfamide/ Mitoxantrone/ Rituximab	- -	- -	- -	- -	- -	- -	14 *	14 *	14 *	14 *	- -
Fludarabine/ Lenalidomide/ Rituximab/ Thalidomide	33 *	33 *	18 *	18 *	- -	- -	- -	- -	- -	- -	- -
Fludarabine/ Mitoxantrone/ Rituximab	- -	90 1%	193 1%	193 1%	193 1%	104 1%	- -	- -	- -	- -	- -
Fludarabine/ Prednis(ol)one	- -	- -	- -	- -	17 *	17 *	17 *	17 *	- -	- -	- -
Fludarabine/ Treosulfan	187 2%	187 2%	157 1%	118 1%	- -	- -	- -	- -	- -	- -	- -
Gemcitabine/ Oxaliplatin/ Rituximab	78 1%	78 1%	78 1%	- -	- -	- -	- -	- -	- -	- -	- -
Gemcitabine/ Vinblastine	93 1%	93 1%	- -	- -	- -	- -	- -	- -	- -	- -	- -
Interferon Alpha 2b	- -	- -	- -	16 *	16 *	16 *	16 *	- -	- -	- -	- -
L-Asparaginase/ Methotrexate	33 *	33 *	33 *	33 *	- -	- -	- -	- -	- -	- -	- -
Melphalan/ Prednis(ol)one	- -	- -	- -	- -	33 *	33 *	33 *	33 *	- -	- -	- -
Mercaptopurine	- -	42 -	42 -	42 -	42 -	9 -	9 -	9 -	9 -	- -	- -

	Jan 10 - Dec 10	Apr 10 - Mar 11	Jul 10 - Jun 11	Oct 10 - Sep 11	Jan 11 - Dec 11	Apr 11 - Mar 12	Jul 11 - Jun 12	Oct 11 - Sep 12	Jan 12 - Dec 12	Apr 12 - Mar 13	Jul 12 - Jun 13
mercaptopurine	-	*	*	*	*	*	*	*	*	-	-
Methotrexate	18	18	18	18	-	-	-	-	-	-	-
Methylprednisolone	60 1%	60 1%	33 *	14 *	-	-	13 *	13 *	13 *	13 *	-
Methylprednisolone/ Rituximab	-	-	-	-	-	-	105 1%	105 1%	105 1%	105 1%	-
Pentostatin	-	-	-	8 *	59 *	59 *	59 *	50 *	-	-	-
Pentostatin/ Rituximab	19 *	19 *	19 *	19 *	-	30 *	30 *	30 *	30 *	-	-
Prednis(ol)one/ Rituximab	-	-	-	15 *	15 *	15 *	15 *	40 *	40 *	40 *	40 *
Rituximab/ Temsirolimus	-	-	8 *	8 *	8 *	8 *	-	-	-	-	-
Temozolomide	31 *	-	-	-	-	-	-	-	-	-	-
Trial Drug (Bio)	-	-	-	-	-	-	71 *	87 1%	87 1%	87 1%	17 *

[TOC](#)

5EU CLL Line 3+ regimens
Projected annual treatments

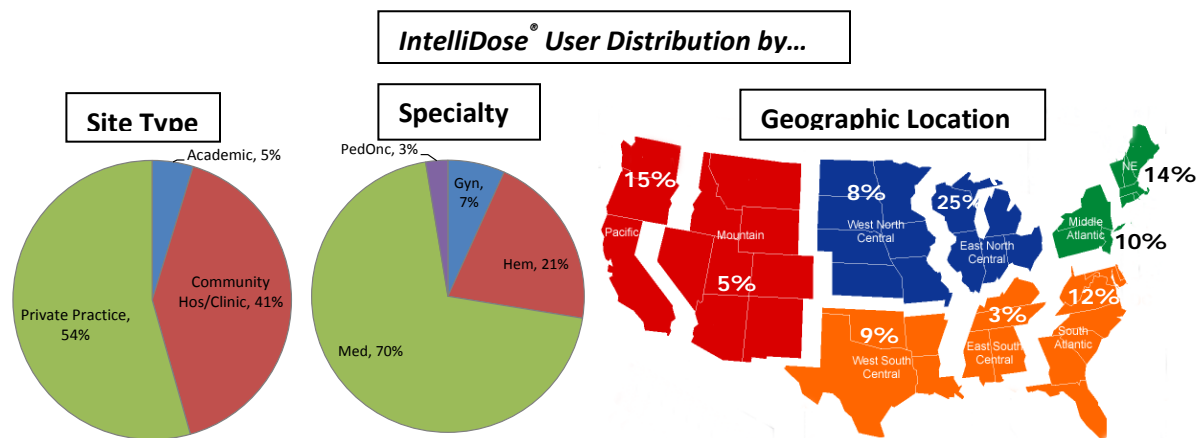
	Jan 10 - Dec 10	Apr 10 - Mar 11	Jul 10 - Jun 11	Oct 10 - Sep 11	Jan 11 - Dec 11	Apr 11 - Mar 12	Jul 11 - Jun 12	Oct 11 - Sep 12	Jan 12 - Dec 12	Apr 12 - Mar 13	Jul 12 - Jun 13
Sample base	140	117	106	109	99	125	129	125	126	124	134
Projected	3947	4284	5090	5199	4973	5250	4799	4696	4946	5103	5163
Bendamustine/ Rituximab	799 20%	1015 24%	1353 27%	1575 30%	1313 26%	1370 26%	1284 27%	1469 31%	1737 35%	1651 32%	1598 31%
Rituximab	145 4%	66 2%	9 *	85 2%	102 2%	199 4%	405 8%	573 12%	781 16%	1112 22%	1141 22%
Chlorambucil	248 6%	225 5%	348 7%	365 7%	400 8%	465 9%	369 8%	409 9%	457 9%	504 10%	473 9%
Ofatumumab	102 3%	102 2%	95 2%	110 2%	67 1%	82 2%	115 2%	83 2%	171 3%	212 4%	333 6%
Prednis(ol)one	- -	- -	198 4%	316 6%	413 8%	489 9%	362 8%	320 7%	340 7%	331 6%	366 7%
Fludarabine/ Rituximab	90 2%	41 1%	- -	- -	- -	- -	- -	- -	- -	118 2%	151 3%
Cyclophosphamide/ Doxorubicin/ Prednis(ol)one/ Rituximab/ Vincristine	170 4%	170 4%	185 4%	34 1%	48 1%	48 1%	33 1%	47 1%	14 *	122 2%	156 3%
Bendamustine	97 2%	74 2%	61 1%	61 1%	77 2%	124 2%	114 2%	212 5%	179 4%	191 4%	239 5%
Fludarabine	77 2%	56 1%	50 1%	92 2%	73 1%	96 2%	65 1%	55 1%	128 3%	173 3%	173 3%
Chlorambucil/ Rituximab	186 5%	125 3%	157 3%	53 1%	103 2%	222 4%	190 4%	169 4%	119 2%	68 1%	101 2%
Chlorambucil/ Prednis(ol)one	151 4%	155 4%	241 5%	251 5%	281 6%	317 6%	225 5%	169 4%	105 2%	62 1%	50 1%
Cyclophosphamide/ Pentostatin/ Rituximab	33 1%	33 1%	33 1%	33 1%	- -	22 *	22 *	22 *	22 *	- -	36 1%
Cisplatin/ Cytarabine	- -	- -	- -	- -	- -	- -	- -	- -	- -	- -	33 1%
Bendamustine/ Cytarabine/ Rituximab	- -	- -	- -	- -	- -	- -	- -	- -	- -	- -	32 1%
Lenalidomide	18 *	18 *	- -	27 1%	27 1%	27 1%	27 1%	- -	- -	- -	31 1%
Doxorubicin	-	-	-	-	-	-	-	-	28	28	28

	Jan 10 - Dec 10	Apr 10 - Mar 11	Jul 10 - Jun 11	Oct 10 - Sep 11	Jan 11 - Dec 11	Apr 11 - Mar 12	Jul 11 - Jun 12	Oct 11 - Sep 12	Jan 12 - Dec 12	Apr 12 - Mar 13	Jul 12 - Jun 13
Dexamethasone	*	-	-	-	-	-	-	-	-	-	-
Dexamethasone/ Rituximab	-	-	-	-	-	30	30	30	30	-	-
Etoposide/ Ifosfamide/ Mitoxantrone/ Rituximab	-	-	-	-	-	1%	1%	1%	1%	-	-
Fludarabine/ Lenalidomide/ Rituximab/ Thalidomide	15	15	-	-	-	-	-	-	-	-	-
	*	*	-	-	-	-	-	-	-	-	-
Fludarabine/ Treosulfan	172	172	157	118	-	-	-	-	-	-	-
	4%	4%	3%	2%	-	-	-	-	-	-	-
Gemcitabine/ Vinblastine	93	93	-	-	-	-	-	-	-	-	-
	2%	2%	-	-	-	-	-	-	-	-	-
L-Asparaginase/ Methotrexate	33	33	33	33	-	-	-	-	-	-	-
	1%	1%	1%	1%	-	-	-	-	-	-	-
Mercaptopurine	-	42	42	42	42	-	-	-	-	-	-
	-	1%	1%	1%	1%	-	-	-	-	-	-
Mercaptopurine/ Prednis(ol)one	-	-	-	8	8	8	8	-	-	-	-
	-	-	-	*	*	*	*	-	-	-	-
Methylprednisolone	40	40	14	14	-	-	-	-	-	-	-
	1%	1%	*	*	-	-	-	-	-	-	-
Rituximab/ Temsirolimus	-	-	8	8	8	8	-	-	-	-	-
	-	-	*	*	*	*	-	-	-	-	-
Temozolomide	31	-	-	-	-	-	-	-	-	-	-
	1%	-	-	-	-	-	-	-	-	-	-
Trial Drug (Bio)	-	-	-	-	-	-	71	87	87	87	17
	-	-	-	-	-	-	1%	2%	2%	2%	*

IntrinsiQ Background

IntrinsiQ (<http://www.intrinsiq.com/>) (Division of AmerisourceBergen Specialty Group, Burlington, MA) is a research organization that seeks to improve the quality and understanding of cancer care through the use of the clinical software, IntelliDose®, that tracks and manages complex chemotherapy workflows across practices. The software implementations and knowledge gained are utilized to assist pharmaceutical companies improve their R&D process.

The data gathered via IntelliDose® is entered by 820 Medical, Pediatric, Gynecologic and Hematologic Oncologists who use the application in their practice. The composition of IntelliDose® users is much like the overall population of Oncologists who practice in the US with respect to specialty, size of practice, type of practice and geographic location.



Gilead Project

Gilead Sciences contracted IntrinsiQ to collect data from US to evaluate trend use of agents/regimens, including Rituximab, across lines of therapy in chronic lymphocytic leukemia during the years 2010 (starting in August), 2011, 2012 and through July 2013.

Methodology

IntrinsiQ, in real time, at the time of care, collects and processes electronic *longitudinal* treatment records for 57,000 cancer patient treatments each year, which allows access to monthly updates of actual oncology data for epidemiology. The IntrinsiQ Data Warehouse contains information covering approximately 110,000 cancer patients and over 6.7 million administrations of drug therapy.

Data Interpretation

The monthly actual use of regimens for the treatment of CLL in the US over a time period of 36 months (from August 2010 to July 2013) showed that single-agent rituximab is the second most common regimen (18% to 25% of monthly use) for the treatment of CLL across all lines of therapy, with bendamustine + rituximab being the most common regimen used (14% to 32% of monthly use). Rituximab monotherapy is also the second most commonly used regimen (7% to 16% of monthly use) for the treatment of relapsed CLL after the combination of bendamustine + rituximab (18% to 33% of monthly use).

**Diag Combo LOT Monthly
(Maintenance Rituximab)**

diagnosis: leukemia
chronic lymphocytic (CLL
adult)

Line of Therapy: second
line plus

	Aug-10	Sep-10	Oct-10	Nov-10	Dec-10	Jan-11	Feb-11	Mar-11	Apr-11	May-11	Jun-11	Jul-11	Aug-11	Sep-11	Oct-11	Nov-11	Dec-11
IntelliDose Patients	130	124	128	131	111	117	109	118	129	134	157	154	156	153	173	156	177
Projected Patients	3493	3278	3338	3322	2781	2877	2804	2896	3249	3259	3728	3718	3737	3638	4021	3471	4077
bendamustine - rituximab	724	766	780	683	653	517	671	640	810	805	809	844	1056	1047	955	758	943
	20.7%	23.4%	23.4%	20.6%	23.5%	18.0%	23.9%	22.1%	24.9%	24.7%	21.7%	22.7%	28.3%	28.8%	23.8%	21.8%	23.1%
rituximab	456	343	338	380	201	221	310	394	455	439	476	458	456	381	652	535	506
	13.0%	10.5%	10.1%	11.4%	7.2%	7.7%	11.0%	13.6%	14.0%	13.5%	12.8%	12.3%	12.2%	10.5%	16.2%	15.4%	12.4%
bendamustine	241	370	364	202	226	369	413	246	354	268	333	241	216	190	140	67	92
	6.9%	11.3%	10.9%	6.1%	8.1%	12.8%	14.7%	8.5%	10.9%	8.2%	8.9%	6.5%	5.8%	5.2%	3.5%	1.9%	2.3%
chlorambucil	358	294	350	309	346	342	326	337	314	363	374	398	367	373	326	323	371
	10.2%	9.0%	10.5%	9.3%	12.5%	11.9%	11.6%	11.6%	9.7%	11.1%	10.0%	10.7%	9.8%	10.2%	8.1%	9.3%	9.1%
cyclophosphamide - fludarabine - rituximab	295	264	286	481	377	344	232	271	304	195	262	362	384	238	326	290	253
	8.4%	8.1%	8.6%	14.5%	13.5%	12.0%	8.3%	9.3%	9.3%	6.0%	7.0%	9.7%	10.3%	6.5%	8.1%	8.4%	6.2%
lenalidomide	0	54	76	54	0	0	0	0	0	164	331	379	370	361	364	360	555
	0.0%	1.6%	2.3%	1.6%	0.0%	0.0%	0.0%	0.0%	0.0%	5.0%	8.9%	10.2%	9.9%	9.9%	9.0%	10.4%	13.6%
ofatumumab	134	158	182	127	50	49	52	25	25	49	24	48	24	24	70	89	92
	3.8%	4.8%	5.5%	3.8%	1.8%	1.7%	1.8%	0.8%	0.8%	1.5%	0.6%	1.3%	0.6%	0.7%	1.7%	2.6%	2.3%
fludarabine	188	185	156	101	50	74	52	123	101	146	119	145	144	190	163	89	161
	5.4%	5.6%	4.7%	3.0%	1.8%	2.6%	1.8%	4.2%	3.1%	4.5%	3.2%	3.9%	3.9%	5.2%	4.1%	2.6%	3.9%
fludarabine - rituximab	295	264	104	177	151	148	155	148	152	122	167	121	96	71	210	156	207
	8.4%	8.1%	3.1%	5.3%	5.4%	5.1%	5.5%	5.1%	4.7%	3.7%	4.5%	3.2%	2.6%	2.0%	5.2%	4.5%	5.1%
cyclophosphamide - rituximab - vincristine	54	106	104	127	176	74	52	25	76	49	48	24	72	71	47	67	69
	1.5%	3.2%	3.1%	3.8%	6.3%	2.6%	1.8%	0.8%	2.3%	1.5%	1.3%	0.6%	1.9%	2.0%	1.2%	1.9%	1.7%
cyclophosphamide - doxorubicin - rituximab - vincristine	27	0	26	51	50	49	26	49	101	49	71	72	48	71	47	89	115
	0.8%	0.0%	0.8%	1.5%	1.8%	1.7%	0.9%	1.7%	3.1%	1.5%	1.9%	1.9%	1.3%	2.0%	1.2%	2.6%	2.8%
investigational drugs	27	0	26	0	0	25	0	0	25	0	0	24	0	24	0	22	0
	0.8%	0.0%	0.8%	0.0%	0.0%	0.9%	0.0%	0.0%	0.8%	0.0%	0.0%	0.6%	0.0%	0.7%	0.0%	0.6%	0.0%
azacitidine	0	0	0	0	0	0	0	0	0	0	0	0	48	48	47	67	46
	0.0%	0.0%	0.0%	0.0%	0.0%	0.0%	0.0%	0.0%	0.0%	0.0%	0.0%	0.0%	1.3%	1.3%	1.2%	1.9%	1.1%
carboplatin - paclitaxel	0	0	26	51	25	25	26	0	0	0	0	0	0	0	0	0	0
	0.0%	0.0%	0.8%	1.5%	0.9%	0.9%	0.9%	0.0%	0.0%	0.0%	0.0%	0.0%	0.0%	0.0%	0.0%	0.0%	0.0%
cyclophosphamide - vincristine	80	0	26	51	50	74	52	49	25	0	95	72	48	24	0	0	0
	2.3%	0.0%	0.8%	1.5%	1.8%	2.6%	1.8%	1.7%	0.8%	0.0%	2.6%	1.9%	1.3%	0.7%	0.0%	0.0%	0.0%
cyclophosphamide - fludarabine	27	26	26	25	0	98	103	49	76	98	71	24	24	48	117	112	69
	0.8%	0.8%	0.8%	0.8%	0.0%	3.4%	3.7%	1.7%	2.3%	3.0%	1.9%	0.6%	0.6%	1.3%	2.9%	3.2%	1.7%
alemtuzumab	80	53	52	127	75	123	77	98	101	73	95	72	48	24	23	0	0
	2.3%	1.6%	1.6%	3.8%	2.7%	4.3%	2.8%	3.4%	3.1%	2.2%	2.6%	1.9%	1.3%	0.7%	0.6%	0.0%	0.0%
cyclophosphamide - rituximab	107	79	52	51	25	25	26	98	76	98	95	121	48	71	23	112	69
	3.1%	2.4%	1.6%	1.5%	0.9%	0.9%	0.9%	3.4%	2.3%	3.0%	2.6%	3.2%	1.3%	2.0%	0.6%	3.2%	1.7%
chlorambucil - rituximab	27	53	52	51	0	0	0	0	0	0	24	24	24	24	23	0	0
	0.8%	1.6%	1.6%	1.5%	0.0%	0.0%	0.0%	0.0%	0.0%	0.0%	0.6%	0.6%	0.6%	0.7%	0.6%	0.0%	0.0%

	Aug-10	Sep-10	Oct-10	Nov-10	Dec-10	Jan-11	Feb-11	Mar-11	Apr-11	May-11	Jun-11	Jul-11	Aug-11	Sep-11	Oct-11	Nov-11	Dec-11
IntelliDose Patients	130	124	128	131	111	117	109	118	129	134	157	154	156	153	173	156	177
Projected Patients	3493	3278	3338	3322	2781	2877	2804	2896	3249	3259	3728	3718	3737	3638	4021	3471	4077
cyclophosphamide	0	0	26	0	25	49	26	25	0	0	24	24	0	24	23	22	23
	0.0%	0.0%	0.8%	0.0%	0.9%	1.7%	0.9%	0.8%	0.0%	0.0%	0.6%	0.6%	0.0%	0.7%	0.6%	0.6%	0.6%
cyclophosphamide - doxorubicin - vincristine	27	26	0	0	0	0	0	25	0	24	24	24	24	24	23	22	46
	0.8%	0.8%	0.0%	0.0%	0.0%	0.0%	0.0%	0.8%	0.0%	0.7%	0.6%	0.6%	0.6%	0.7%	0.6%	0.6%	1.1%
alemtuzumab - rituximab	0	0	0	0	0	0	0	0	0	24	24	24	24	0	0	0	23
	0.0%	0.0%	0.0%	0.0%	0.0%	0.0%	0.0%	0.0%	0.0%	0.7%	0.6%	0.6%	0.6%	0.0%	0.0%	0.0%	0.6%
brentuximab vedotin	0	0	0	0	0	0	0	0	0	0	0	0	0	0	0	0	23
	0.0%	0.0%	0.0%	0.0%	0.0%	0.0%	0.0%	0.0%	0.0%	0.0%	0.0%	0.0%	0.0%	0.0%	0.0%	0.0%	0.6%
decitabine	0	0	0	0	0	0	0	0	0	0	0	0	0	0	0	0	23
	0.0%	0.0%	0.0%	0.0%	0.0%	0.0%	0.0%	0.0%	0.0%	0.0%	0.0%	0.0%	0.0%	0.0%	0.0%	0.0%	0.6%
carboplatin - etoposide - ifosfamide - rituximab	0	0	52	0	0	25	0	0	0	0	0	0	0	0	23	0	0
	0.0%	0.0%	1.6%	0.0%	0.0%	0.9%	0.0%	0.0%	0.0%	0.0%	0.0%	0.0%	0.0%	0.0%	0.6%	0.0%	0.0%
cyclophosphamide - mitoxantrone - rituximab - vincristine	0	0	0	25	50	25	0	0	0	0	0	0	0	0	0	0	0
	0.0%	0.0%	0.0%	0.8%	1.8%	0.9%	0.0%	0.0%	0.0%	0.0%	0.0%	0.0%	0.0%	0.0%	0.0%	0.0%	0.0%
cisplatin	0	0	0	0	0	0	0	0	0	0	0	24	24	0	0	0	0
	0.0%	0.0%	0.0%	0.0%	0.0%	0.0%	0.0%	0.0%	0.0%	0.0%	0.0%	0.6%	0.6%	0.0%	0.0%	0.0%	0.0%
cyclophosphamide - pentostatin - rituximab	54	26	52	0	25	25	26	74	51	24	24	48	72	71	117	112	46
	1.5%	0.8%	1.6%	0.0%	0.9%	0.9%	0.9%	2.5%	1.6%	0.7%	0.6%	1.3%	1.9%	2.0%	2.9%	3.2%	1.1%
dasatinib	0	0	0	25	25	25	26	25	25	24	24	24	24	24	23	22	23
	0.0%	0.0%	0.0%	0.8%	0.9%	0.9%	0.9%	0.9%	0.8%	0.7%	0.6%	0.6%	0.6%	0.7%	0.6%	0.6%	0.6%
bortezomib	54	26	0	51	25	25	26	0	25	24	24	0	0	0	0	0	0
	1.5%	0.8%	0.0%	1.5%	0.9%	0.9%	0.9%	0.0%	0.8%	0.7%	0.6%	0.0%	0.0%	0.0%	0.0%	0.0%	0.0%
nilotinib	0	26	26	25	25	25	26	25	0	0	0	0	0	0	0	0	23
	0.0%	0.8%	0.8%	0.8%	0.9%	0.9%	0.9%	0.9%	0.0%	0.0%	0.0%	0.0%	0.0%	0.0%	0.0%	0.0%	0.6%
cyclophosphamide - doxorubicin - etoposide - rituximab - vincristine	0	0	0	25	25	0	0	49	51	49	24	0	0	24	23	22	0
	0.0%	0.0%	0.0%	0.8%	0.9%	0.0%	0.0%	1.7%	1.6%	1.5%	0.6%	0.0%	0.0%	0.7%	0.6%	0.6%	0.0%
bleomycin - dacarbazine - doxorubicin - vinblastine	54	26	0	0	0	0	0	0	0	24	24	24	24	24	23	0	0
	1.5%	0.8%	0.0%	0.0%	0.0%	0.0%	0.0%	0.0%	0.0%	0.7%	0.6%	0.6%	0.6%	0.7%	0.6%	0.0%	0.0%
fludarabine - mitoxantrone	0	0	0	0	0	0	0	0	0	0	0	24	24	24	47	45	46
	0.0%	0.0%	0.0%	0.0%	0.0%	0.0%	0.0%	0.0%	0.0%	0.0%	0.0%	0.6%	0.6%	0.7%	1.2%	1.3%	1.1%
bendamustine - mitoxantrone - rituximab	0	26	26	0	0	0	0	0	0	0	0	0	0	24	47	0	23
	0.0%	0.8%	0.8%	0.0%	0.0%	0.0%	0.0%	0.0%	0.0%	0.0%	0.0%	0.0%	0.0%	0.7%	1.2%	0.0%	0.6%
gemcitabine - paclitaxel	0	0	0	0	0	0	0	0	0	24	24	24	24	24	23	22	23
	0.0%	0.0%	0.0%	0.0%	0.0%	0.0%	0.0%	0.0%	0.0%	0.7%	0.6%	0.6%	0.6%	0.7%	0.6%	0.6%	0.6%
pemetrexed	0	0	0	0	0	0	0	0	0	0	0	0	0	24	23	22	23
	0.0%	0.0%	0.0%	0.0%	0.0%	0.0%	0.0%	0.0%	0.0%	0.0%	0.0%	0.0%	0.0%	0.7%	0.6%	0.6%	0.6%
carboplatin - etoposide	0	0	26	25	25	49	26	25	0	0	0	0	0	0	0	0	0
	0.0%	0.0%	0.8%	0.8%	0.9%	1.7%	0.9%	0.8%	0.0%	0.0%	0.0%	0.0%	0.0%	0.0%	0.0%	0.0%	0.0%
hydroxyurea - rituximab	0	0	26	25	25	25	26	25	0	24	0	0	0	0	0	0	0
	0.0%	0.0%	0.8%	0.8%	0.9%	0.9%	0.9%	0.8%	0.0%	0.7%	0.0%	0.0%	0.0%	0.0%	0.0%	0.0%	0.0%
cyclophosphamide - doxorubicin - rituximab	27	26	26	25	0	0	0	0	0	0	0	0	0	0	0	0	0
	0.8%	0.8%	0.8%	0.8%	0.0%	0.0%	0.0%	0.0%	0.0%	0.0%	0.0%	0.0%	0.0%	0.0%	0.0%	0.0%	0.0%
pentostatin	0	0	0	0	0	0	0	0	0	0	0	0	0	0	23	22	23
	0.0%	0.0%	0.0%	0.0%	0.0%	0.0%	0.0%	0.0%	0.0%	0.0%	0.0%	0.0%	0.0%	0.0%	0.6%	0.6%	0.6%

**Diag Combo LOT Monthly
(Maintenance Rituximab)**

diagnosis: leukemia
chronic lymphocytic (CLL
adult)

Line of Therapy: second
line plus

	Jan-12	Feb-12	Mar-12	Apr-12	May-12	Jun-12	Jul-12	Aug-12	Sep-12	Oct-12	Nov-12	Dec-12	Jan-13	Feb-13	Mar-13	Apr-13	May-13	Jun-13	Jul-13
IntelliDose Patients	185	190	184	160	166	153	127	153	139	128	136	135	163	145	148	136	156	138	162
Projected Patients	4055	4388	4275	3925	4028	3709	3178	3950	3779	3247	3316	3329	4081	3747	3855	3425	3761	3529	3947
bendamustine - rituximab	723	1063	951	959	1016	923	625	958	874	813	826	889	1175	1084	1253	879	988	969	927
	17.8%	24.2%	22.2%	24.4%	25.2%	24.9%	19.7%	24.3%	23.1%	25.0%	24.9%	26.7%	28.8%	28.9%	32.5%	25.7%	26.3%	27.5%	23.5%
rituximab	350	508	557	467	557	510	350	544	491	406	365	445	525	361	496	427	410	485	561
	8.6%	11.6%	13.0%	11.9%	13.8%	13.8%	11.0%	13.8%	13.0%	12.5%	11.0%	13.4%	12.9%	9.6%	12.9%	12.5%	10.9%	13.7%	14.2%
bendamustine	197	208	255	246	290	243	175	181	300	152	243	222	350	361	209	351	289	306	342
	4.9%	4.7%	6.0%	6.3%	7.2%	6.6%	5.5%	4.6%	7.9%	4.7%	7.3%	6.7%	8.6%	9.6%	5.4%	10.3%	7.7%	8.7%	8.7%
chlorambucil	358	370	409	459	475	428	437	457	423	403	417	358	431	447	443	418	362	327	291
	8.8%	8.4%	9.6%	11.7%	11.8%	11.5%	13.8%	11.6%	11.2%	12.4%	12.6%	10.8%	10.6%	11.9%	11.5%	12.2%	9.6%	9.3%	7.4%
cyclophosphamide - fludarabine - rituximab	329	347	325	221	315	267	275	259	246	203	292	272	175	77	235	151	241	204	268
	8.1%	7.9%	7.6%	5.6%	7.8%	7.2%	8.7%	6.6%	6.5%	6.3%	8.8%	8.2%	4.3%	2.1%	6.1%	4.4%	6.4%	5.8%	6.8%
lenalidomide	565	530	503	317	311	317	291	255	217	204	203	80	75	75	72	95	194	167	191
	13.9%	12.1%	11.8%	8.1%	7.7%	8.5%	9.2%	6.5%	5.7%	6.3%	6.1%	2.4%	1.8%	2.0%	1.9%	2.8%	5.2%	4.7%	4.8%
ofatumumab	66	69	139	123	145	146	150	155	164	152	122	49	150	103	104	25	72	77	171
	1.6%	1.6%	3.3%	3.1%	3.6%	3.9%	4.7%	3.9%	4.3%	4.7%	3.7%	1.5%	3.7%	2.8%	2.7%	0.7%	1.9%	2.2%	4.3%
fludarabine	66	92	70	74	73	97	50	26	27	0	24	49	75	103	52	126	121	77	146
	1.6%	2.1%	1.6%	1.9%	1.8%	2.6%	1.6%	0.7%	0.7%	0.0%	0.7%	1.5%	1.8%	2.8%	1.4%	3.7%	3.2%	2.2%	3.7%
fludarabine - rituximab	219	116	70	25	48	73	150	207	191	102	97	99	50	77	78	100	121	102	122
	5.4%	2.6%	1.6%	0.6%	1.2%	2.0%	4.7%	5.2%	5.1%	3.1%	2.9%	3.0%	1.2%	2.1%	2.0%	2.9%	3.2%	2.9%	3.1%
cyclophosphamide - rituximab - vincristine	131	139	139	172	194	122	75	52	82	102	97	74	75	129	104	126	145	77	122
	3.2%	3.2%	3.3%	4.4%	4.8%	3.3%	2.4%	1.3%	2.2%	3.1%	2.9%	2.2%	1.8%	3.4%	2.7%	3.7%	3.8%	2.2%	3.1%
cyclophosphamide - doxorubicin - rituximab - vincristine	153	162	139	148	97	97	25	78	82	0	49	25	25	26	78	25	24	26	98
	3.8%	3.7%	3.3%	3.8%	2.4%	2.6%	0.8%	2.0%	2.2%	0.0%	1.5%	0.7%	0.6%	0.7%	2.0%	0.7%	0.6%	0.7%	2.5%
investigational drugs	0	0	0	49	24	49	0	78	82	127	73	124	150	103	131	126	96	77	73
	0.0%	0.0%	0.0%	1.3%	0.6%	1.3%	0.0%	2.0%	2.2%	3.9%	2.2%	3.7%	3.7%	2.8%	3.4%	3.7%	2.6%	2.2%	1.9%
azacitidine	44	23	23	25	0	0	50	52	55	51	49	49	25	52	26	75	72	51	73
	1.1%	0.5%	0.5%	0.6%	0.0%	0.0%	1.6%	1.3%	1.4%	1.6%	1.5%	1.5%	0.6%	1.4%	0.7%	2.2%	1.9%	1.4%	1.9%
carboplatin - paclitaxel	0	0	0	0	0	0	50	26	0	0	0	0	25	26	52	25	24	0	73
	0.0%	0.0%	0.0%	0.0%	0.0%	0.0%	1.6%	0.7%	0.0%	0.0%	0.0%	0.0%	0.6%	0.7%	1.4%	0.7%	0.6%	0.0%	1.9%
cyclophosphamide - vincristine	44	69	93	49	24	24	25	78	27	25	49	0	25	77	26	50	96	77	49
	1.1%	1.6%	2.2%	1.3%	0.6%	0.7%	0.8%	2.0%	0.7%	0.8%	1.5%	0.0%	0.6%	2.1%	0.7%	1.5%	2.6%	2.2%	1.2%
cyclophosphamide - fludarabine	44	23	23	74	48	24	0	0	0	0	0	25	50	26	26	25	48	26	49
	1.1%	0.5%	0.5%	1.9%	1.2%	0.7%	0.0%	0.0%	0.0%	0.0%	0.0%	0.7%	1.2%	0.7%	0.7%	0.7%	1.3%	0.7%	1.2%
alemtuzumab	44	116	116	98	48	49	25	26	0	51	73	49	100	103	52	25	72	77	24
	1.1%	2.6%	2.7%	2.5%	1.2%	1.3%	0.8%	0.7%	0.0%	1.6%	2.2%	1.5%	2.5%	2.8%	1.4%	0.7%	1.9%	2.2%	0.6%
cyclophosphamide - rituximab	88	46	46	49	24	49	75	52	27	25	0	49	25	103	104	75	24	26	24
	2.2%	1.1%	1.1%	1.3%	0.6%	1.3%	2.4%	1.3%	0.7%	0.8%	0.0%	1.5%	0.6%	2.8%	2.7%	2.2%	0.6%	0.7%	0.6%
chlorambucil - rituximab	0	0	0	0	0	0	0	0	55	76	73	49	50	52	26	0	24	26	24
	0.0%	0.0%	0.0%	0.0%	0.0%	0.0%	0.0%	0.0%	1.4%	2.3%	2.2%	1.5%	1.2%	1.4%	0.7%	0.0%	0.6%	0.7%	0.6%

	Jan-12	Feb-12	Mar-12	Apr-12	May-12	Jun-12	Jul-12	Aug-12	Sep-12	Oct-12	Nov-12	Dec-12	Jan-13	Feb-13	Mar-13	Apr-13	May-13	Jun-13	Jul-13
IntelliDose Patients	185	190	184	160	166	153	127	153	139	128	136	135	163	145	148	136	156	138	162
Projected Patients	4055	4388	4275	3925	4028	3709	3178	3950	3779	3247	3316	3329	4081	3747	3855	3425	3761	3529	3947
	Jan-12	Feb-12	Mar-12	Apr-12	May-12	Jun-12	Jul-12	Aug-12	Sep-12	Oct-12	Nov-12	Dec-12	Jan-13	Feb-13	Mar-13	Apr-13	May-13	Jun-13	Jul-13
gemcitabine - paclitaxel	22	23	0	0	0	0	0	0	0	0	0	0	0	0	0	0	0	0	0
	0.5%	0.5%	0.0%	0.0%	0.0%	0.0%	0.0%	0.0%	0.0%	0.0%	0.0%	0.0%	0.0%	0.0%	0.0%	0.0%	0.0%	0.0%	0.0%
pralatrexate	0	0	0	0	0	0	0	26	27	25	24	25	25	0	0	25	24	0	0
	0.0%	0.0%	0.0%	0.0%	0.0%	0.0%	0.0%	0.7%	0.7%	0.8%	0.7%	0.7%	0.6%	0.0%	0.0%	0.7%	0.6%	0.0%	0.0%
pemetrexed	22	23	23	25	0	0	0	0	0	0	0	0	0	0	0	0	0	0	0
	0.5%	0.5%	0.5%	0.6%	0.0%	0.0%	0.0%	0.0%	0.0%	0.0%	0.0%	0.0%	0.0%	0.0%	0.0%	0.0%	0.0%	0.0%	0.0%
cyclophosphamide - doxorubicin - ofatumumab - vincristine	0	0	0	25	24	24	25	26	27	25	0	0	0	0	0	0	0	0	0
	0.0%	0.0%	0.0%	0.6%	0.6%	0.7%	0.8%	0.7%	0.7%	0.8%	0.0%	0.0%	0.0%	0.0%	0.0%	0.0%	0.0%	0.0%	0.0%
cyclophosphamide - doxorubicin - rituximab	22	23	23	0	0	0	0	0	0	0	0	0	0	0	0	0	0	0	0
	0.5%	0.5%	0.5%	0.0%	0.0%	0.0%	0.0%	0.0%	0.0%	0.0%	0.0%	0.0%	0.0%	0.0%	0.0%	0.0%	0.0%	0.0%	0.0%
pentostatin	22	23	0	25	24	0	0	0	0	0	0	0	0	0	0	0	0	0	0
	0.5%	0.5%	0.0%	0.6%	0.6%	0.0%	0.0%	0.0%	0.0%	0.0%	0.0%	0.0%	0.0%	0.0%	0.0%	0.0%	0.0%	0.0%	0.0%
carboplatin - etoposide - ifosfamide	22	0	0	0	0	0	0	0	0	0	0	0	0	0	0	0	0	0	0
	0.5%	0.0%	0.0%	0.0%	0.0%	0.0%	0.0%	0.0%	0.0%	0.0%	0.0%	0.0%	0.0%	0.0%	0.0%	0.0%	0.0%	0.0%	0.0%
cisplatin - gemcitabine	0	0	0	0	0	0	0	0	0	0	0	0	0	0	52	50	48	0	0
	0.0%	0.0%	0.0%	0.0%	0.0%	0.0%	0.0%	0.0%	0.0%	0.0%	0.0%	0.0%	0.0%	0.0%	1.4%	1.5%	1.3%	0.0%	0.0%
cyclophosphamide - fludarabine - methotrexate - rituximab	0	0	0	25	24	0	0	0	0	0	0	0	0	0	0	0	0	0	0
	0.0%	0.0%	0.0%	0.6%	0.6%	0.0%	0.0%	0.0%	0.0%	0.0%	0.0%	0.0%	0.0%	0.0%	0.0%	0.0%	0.0%	0.0%	0.0%
ofatumumab - rituximab	0	23	0	0	0	0	0	0	0	0	0	0	0	0	0	0	0	0	0
	0.0%	0.5%	0.0%	0.0%	0.0%	0.0%	0.0%	0.0%	0.0%	0.0%	0.0%	0.0%	0.0%	0.0%	0.0%	0.0%	0.0%	0.0%	0.0%
cetuximab	0	0	23	25	24	0	25	26	0	0	0	0	0	0	0	0	0	0	0
	0.0%	0.0%	0.5%	0.6%	0.6%	0.0%	0.8%	0.7%	0.0%	0.0%	0.0%	0.0%	0.0%	0.0%	0.0%	0.0%	0.0%	0.0%	0.0%
chlorambucil - ofatumumab	0	0	0	0	0	24	25	26	27	0	0	0	0	0	0	0	0	0	0
	0.0%	0.0%	0.0%	0.0%	0.0%	0.7%	0.8%	0.7%	0.7%	0.0%	0.0%	0.0%	0.0%	0.0%	0.0%	0.0%	0.0%	0.0%	0.0%
cyclophosphamide - lenalidomide - rituximab	0	0	0	0	0	0	0	0	0	0	0	0	25	26	26	25	0	0	0
	0.0%	0.0%	0.0%	0.0%	0.0%	0.0%	0.0%	0.0%	0.0%	0.0%	0.0%	0.0%	0.6%	0.7%	0.7%	0.7%	0.0%	0.0%	0.0%
bortezomib - rituximab	0	0	0	0	0	0	0	0	0	0	0	0	0	26	26	25	24	0	0
	0.0%	0.0%	0.0%	0.0%	0.0%	0.0%	0.0%	0.0%	0.0%	0.0%	0.0%	0.0%	0.0%	0.7%	0.7%	0.7%	0.6%	0.0%	0.0%
temozolomide	0	0	0	0	0	0	0	0	0	0	0	0	0	0	26	25	24	26	0
	0.0%	0.0%	0.0%	0.0%	0.0%	0.0%	0.0%	0.0%	0.0%	0.0%	0.0%	0.0%	0.0%	0.0%	0.7%	0.7%	0.6%	0.7%	0.0%
gemcitabine	0	0	23	25	24	0	0	0	0	0	0	0	0	0	0	0	0	0	0
	0.0%	0.0%	0.5%	0.6%	0.6%	0.0%	0.0%	0.0%	0.0%	0.0%	0.0%	0.0%	0.0%	0.0%	0.0%	0.0%	0.0%	0.0%	0.0%
fluorouracil	22	23	0	0	0	0	0	0	0	0	0	0	0	0	0	0	0	0	0
	0.5%	0.5%	0.0%	0.0%	0.0%	0.0%	0.0%	0.0%	0.0%	0.0%	0.0%	0.0%	0.0%	0.0%	0.0%	0.0%	0.0%	0.0%	0.0%
cisplatin - docetaxel	22	23	23	0	0	0	0	0	0	0	0	0	0	0	0	0	0	0	0
	0.5%	0.5%	0.5%	0.0%	0.0%	0.0%	0.0%	0.0%	0.0%	0.0%	0.0%	0.0%	0.0%	0.0%	0.0%	0.0%	0.0%	0.0%	0.0%
carboplatin - gemcitabine	0	0	0	0	0	0	0	26	27	25	0	0	0	0	0	0	0	0	0
	0.0%	0.0%	0.0%	0.0%	0.0%	0.0%	0.0%	0.7%	0.7%	0.8%	0.0%	0.0%	0.0%	0.0%	0.0%	0.0%	0.0%	0.0%	0.0%
sipuleucel-t	0	0	0	0	0	0	0	26	27	25	0	0	0	0	0	0	0	0	0
	0.0%	0.0%	0.0%	0.0%	0.0%	0.0%	0.0%	0.7%	0.7%	0.8%	0.0%	0.0%	0.0%	0.0%	0.0%	0.0%	0.0%	0.0%	0.0%
carboplatin - paclitaxel albumin bound	0	0	0	0	0	0	0	0	0	0	0	0	0	26	26	25	0	0	0
	0.0%	0.0%	0.0%	0.0%	0.0%	0.0%	0.0%	0.0%	0.0%	0.0%	0.0%	0.0%	0.0%	0.7%	0.7%	0.7%	0.0%	0.0%	0.0%

