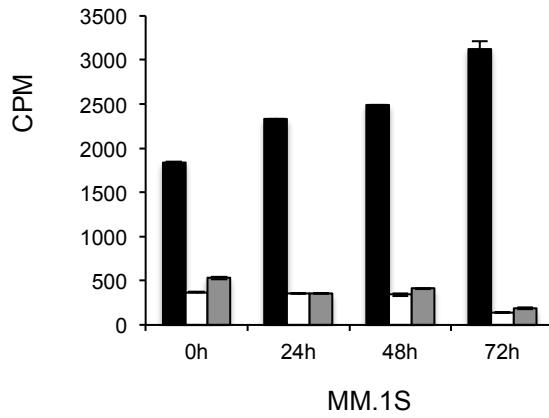
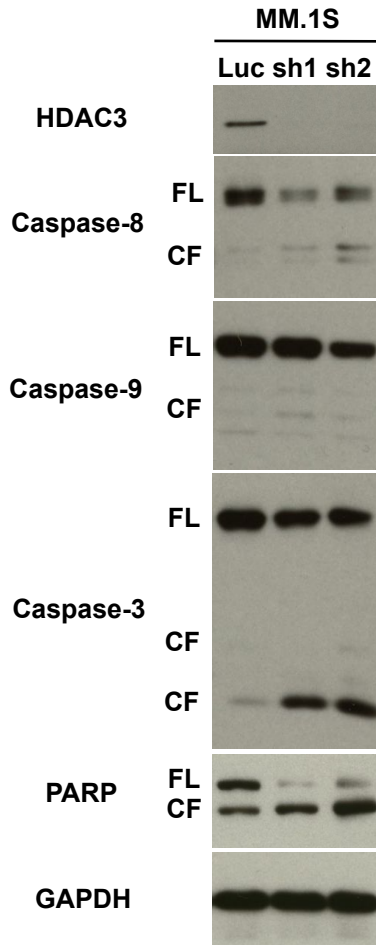
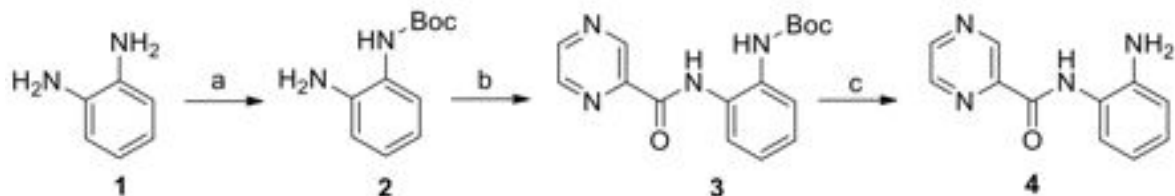


A**B****Supplementary Figure 1**

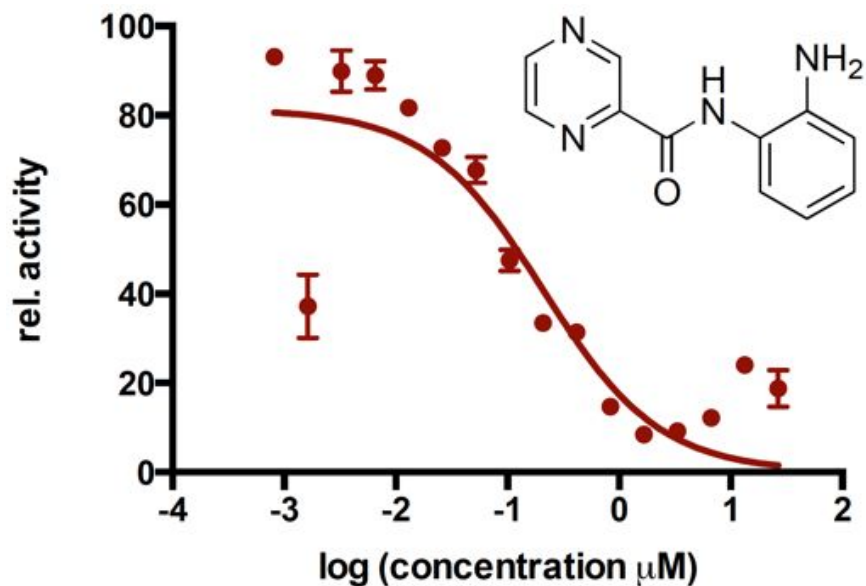
A

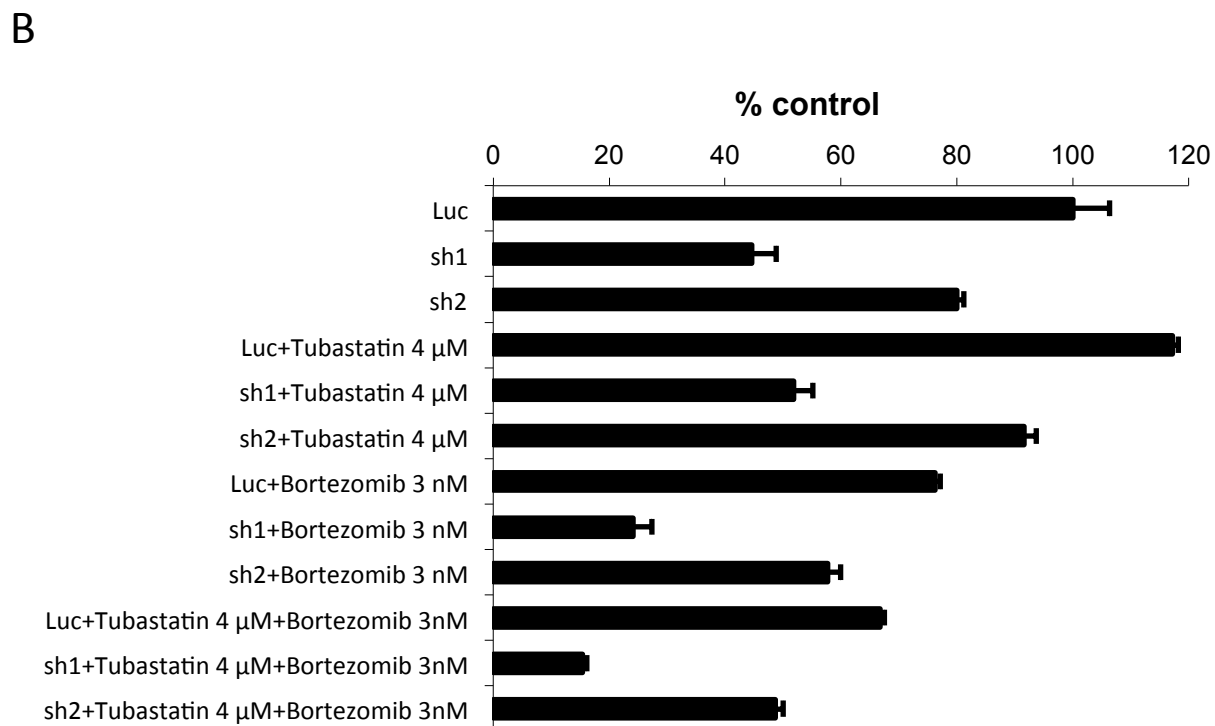
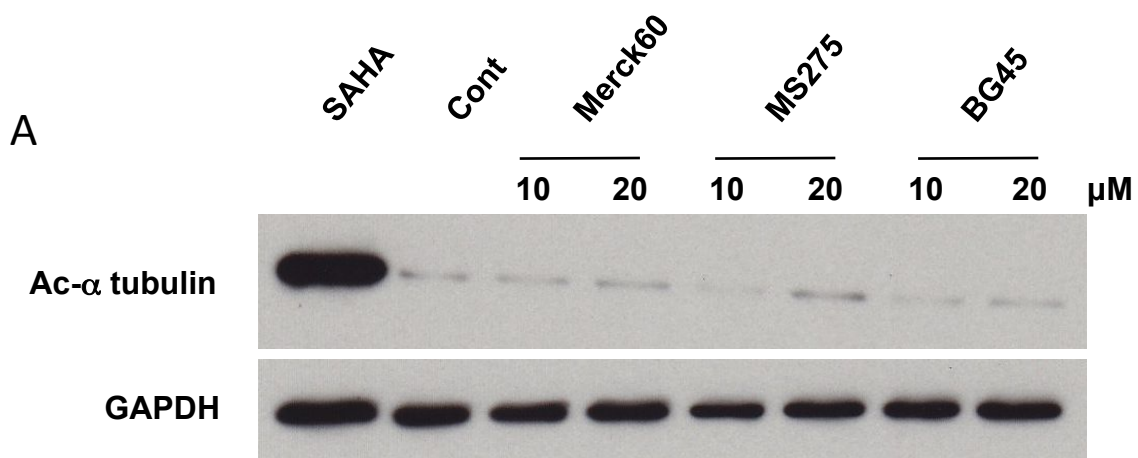
Scheme:1



Reagents & conditions: (a). Boc_2O , 4-DMAP, THF, 2h, RT (b). pyrazine-2-carboxylic acid, EDCI, 4-DMAP(cat), DCM:pyridine (1:1), RT, 2h (c) DCM:THF (1:1), RT, 30min

B





Supplementary Figure 3