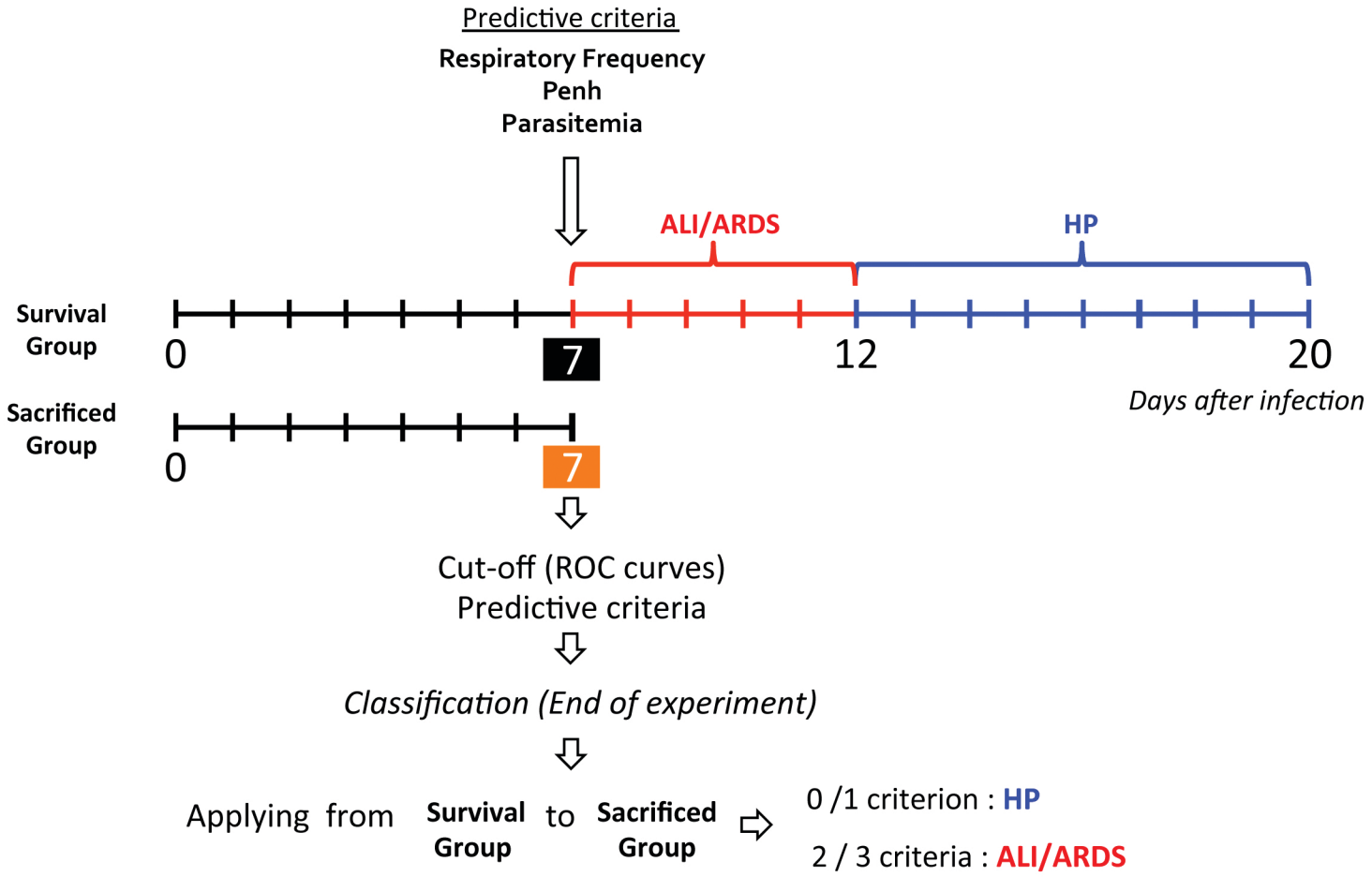
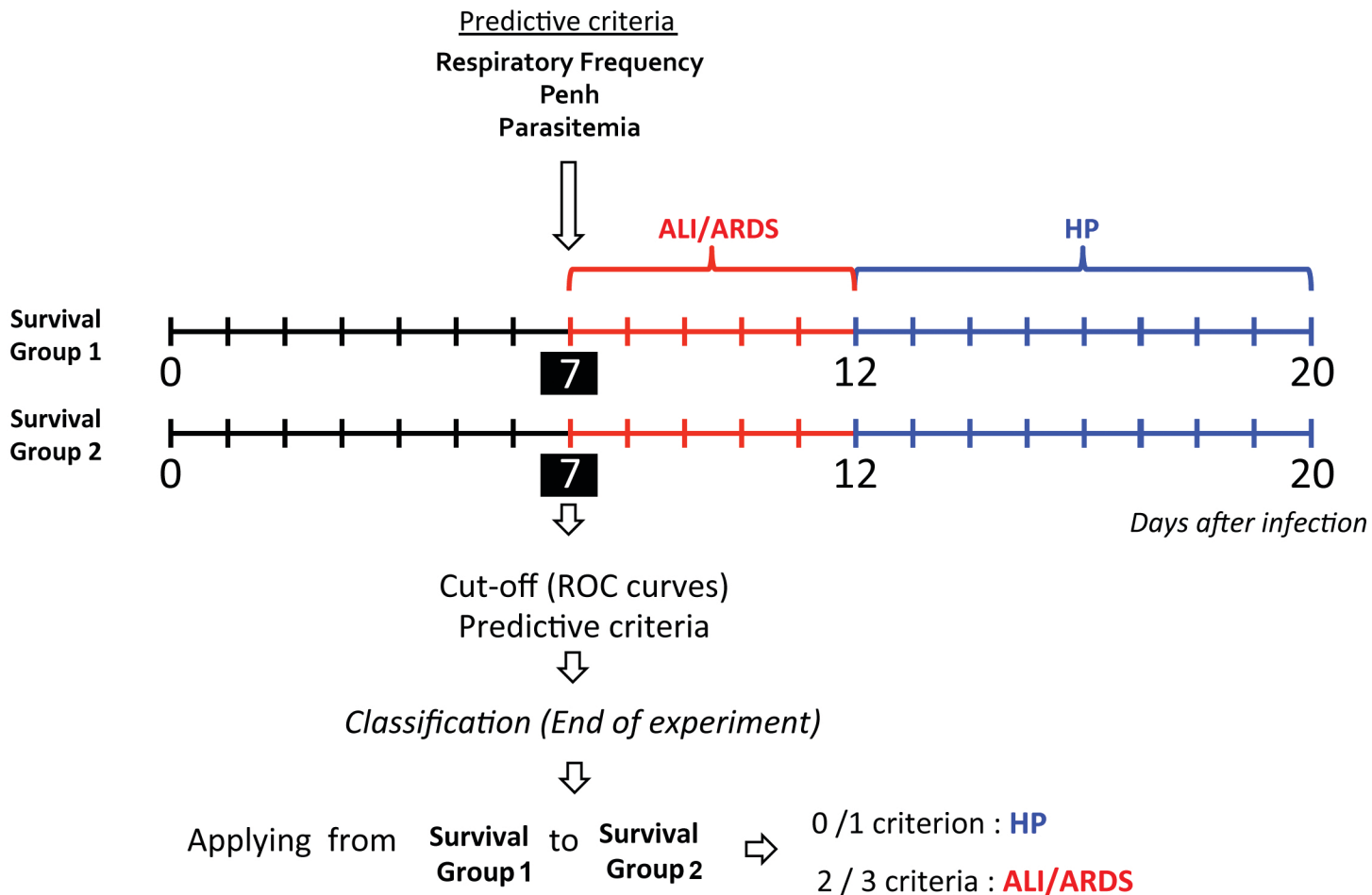


Supplementary Table S1. Cut-offs using the ROC curves for Penh, respiratory frequency and parasitemia from 13 experiments measured on the 7th days after infection from the survival group. These data were used to classify the sacrifice group.

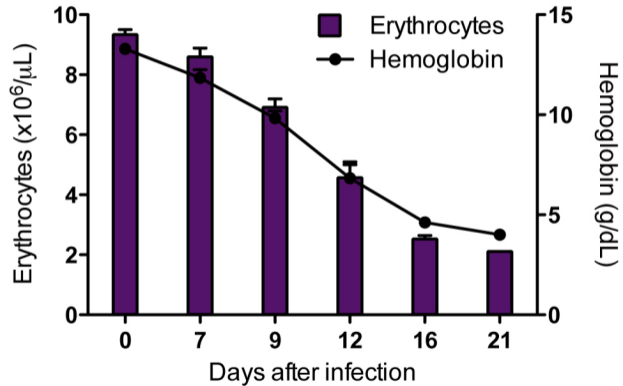
Experiments	ROC CURVES OF SURVIVAL GROUP									Attributes of survival groups after parameters associations	
	Penh			Respiratory Frequency			Parasitemia				
	Cut-off (>)	Sensitivity (%)	Specificity (%)	Cut-off (<=)	Sensitivity (%)	Specificity (%)	Cut-off (>)	Sensitivity (%)	Specificity (%)	Sensitivity (%)	Specificity (%)
1	1,87	83	100	252,20	67	100	10,66	100	50	83	100
2	3,25	75	100	345,80	75	75	13,66	100	75	100	100
3	3,38	100	50	268,90	100	75	12,66	100	75	75	71
4	3,62	67	100	250,00	100	90	12,66	67	40	100	90
5	2,4	80	63	259,20	80	100	13,33	60	75	67	90
6	1,02	100	86	195,70	100	100	12,66	100	100	100	100
7	1,77	100	71	325,00	67	100	15,33	67	86	100	75
8	2,42	75	100	312,20	100	100	17,00	100	100	80	100
9	2,38	80	80	276,00	80	60	13,33	100	100	80	100
10	3,66	40	100	306,90	80	100	13,60	100	75	80	90
11	3,46	100	100	243,00	100	100	20,10	75	100	100	100
12	2,69	100	75	254,50	80	100	11,50	80	75	83	75
13	2,83	83	80	290,50	100	80	17,66	80	80	100	90
Range	1.022-3.664	40-100	50-100	195.7-345.8	67-100	60-100	10.66-20.1	60-100	40-100	67-100	71-100
Average	2,67	83,33	85,00	275,38	86,8	90,77	14,17	86,8	79,28	88,31	90,85
SD	0,80	17,55	16,85	40,12	13,47	13,67	2,66	15,75	18,82	11,95	10,81



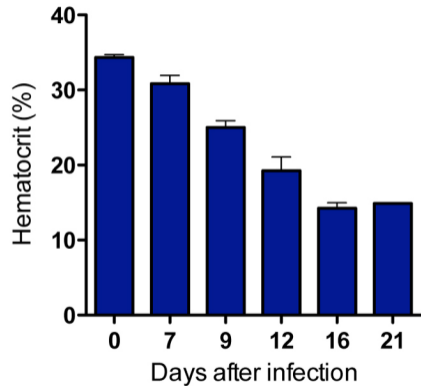


Supplementary Figure S3

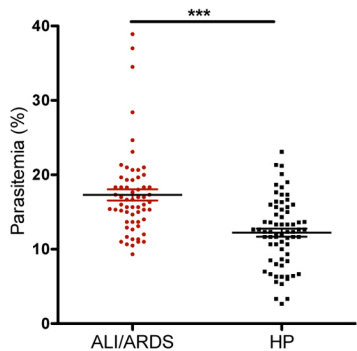
A



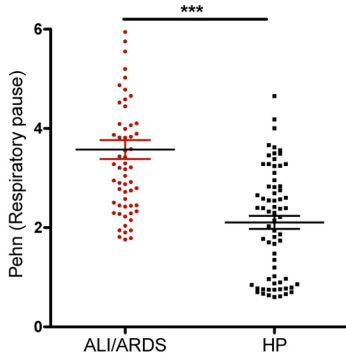
B



A Supplementary Figure S4



B



C

