

Supplemental Figure 1. Appearance of mice homozygous for the Stra6 neoR allele

Supplemental Figure 2. Mice homozygous for the Stra6 neoR allele develop fatal hydrocephalus.

Supplemental Figure 3. The Everest anti-STRA6 antibody detects a 75 kDa protein in murine tissues but not recombinant human STRA6.

Supplemental Figure 4. Eye phenotypes of Rbp4 and Lrat knockout mice.

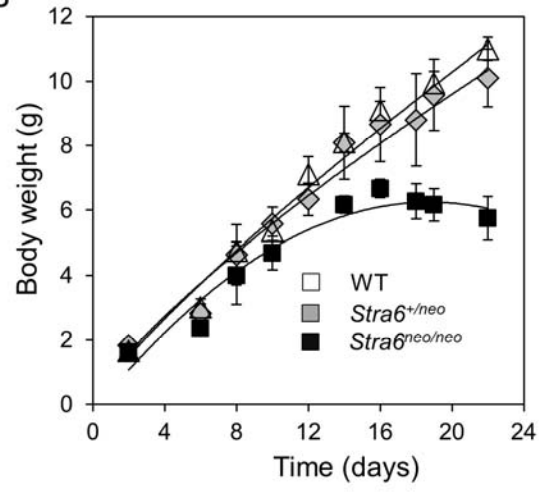
Supplemental Figure 5. RBP4 and retinoid levels in blood, liver, and lung of Stra6 knockout mice.

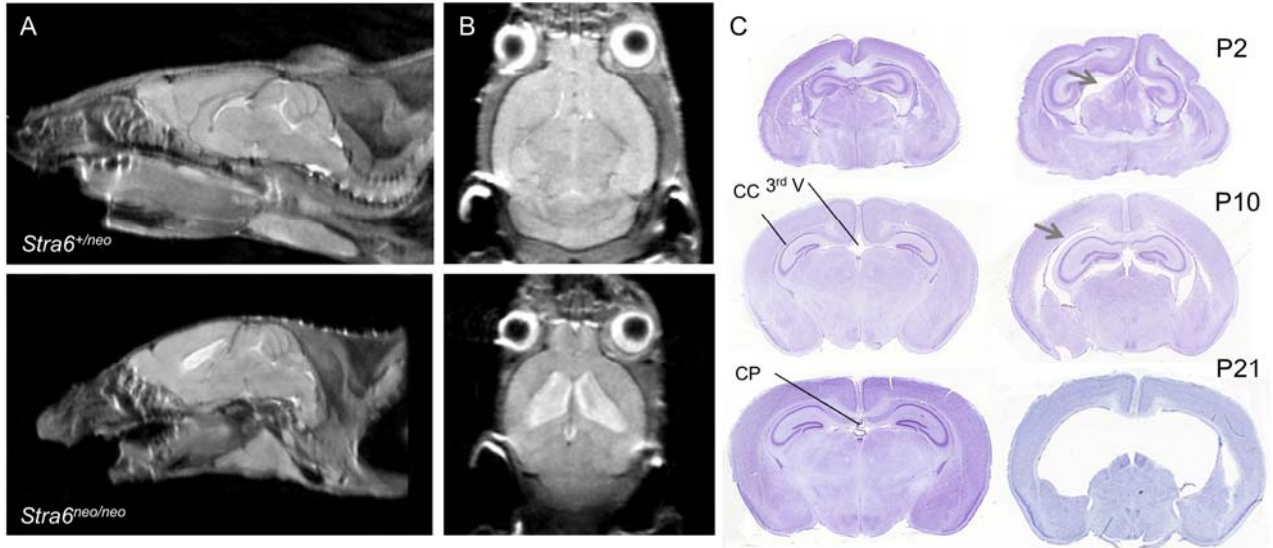
Supplemental Figure 6. Retinoid levels in serum, liver, and lung of vitamin A deprived Stra6^{+/-} and Stra6^{-/-} mice.

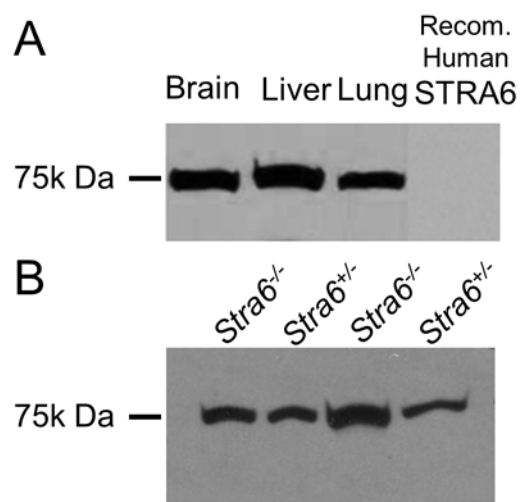
A



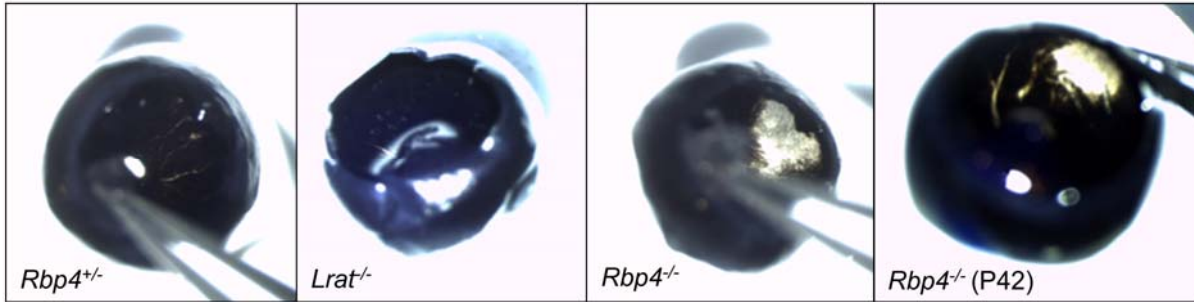
B







A



B

