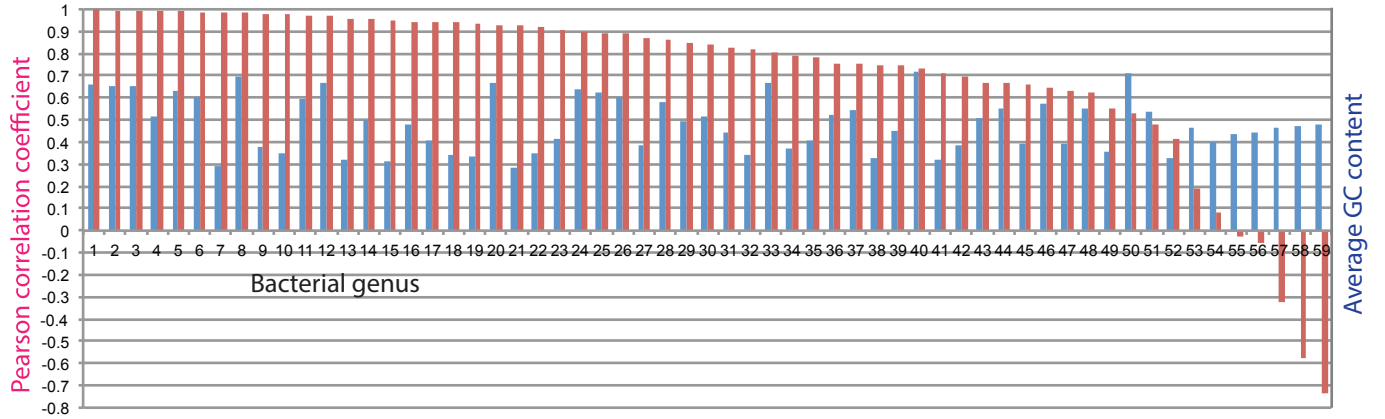


Figure S3. SCSs-TRs and direct repeats-TRs correlations in bacterial genera

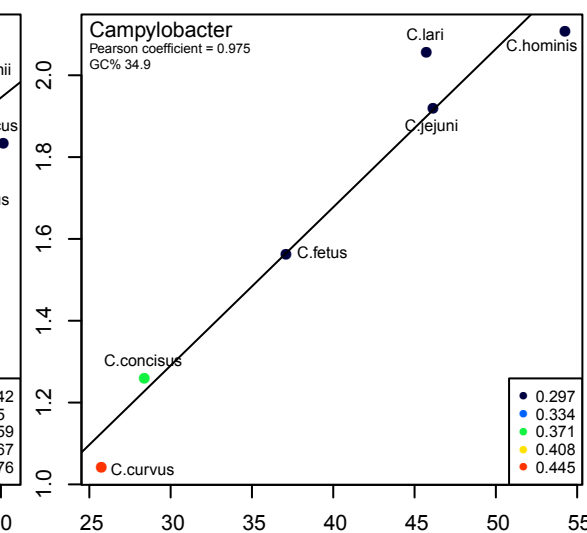
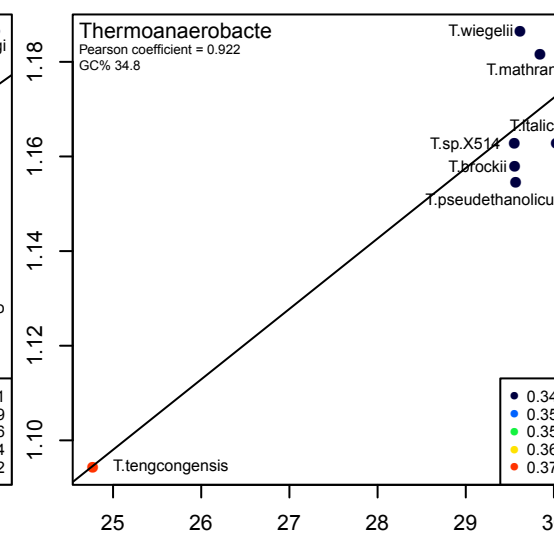
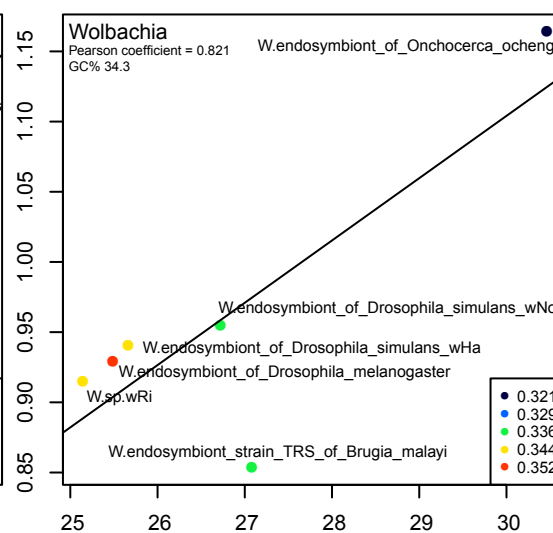
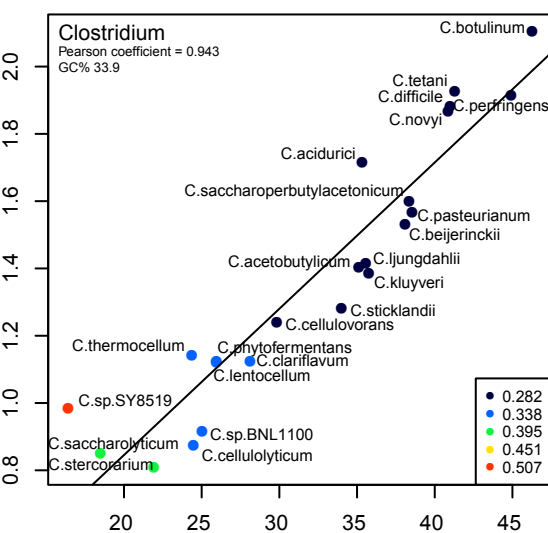
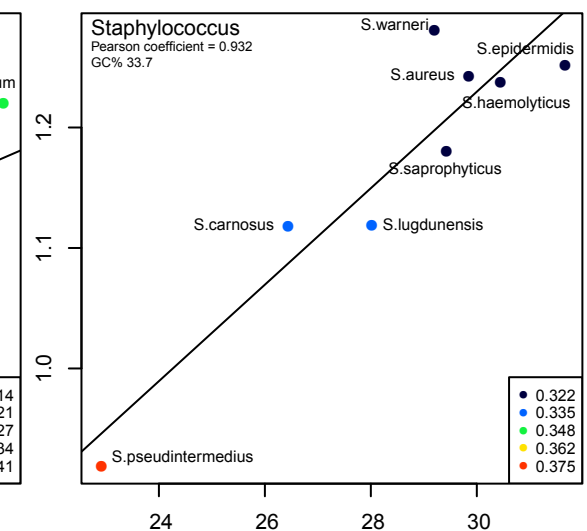
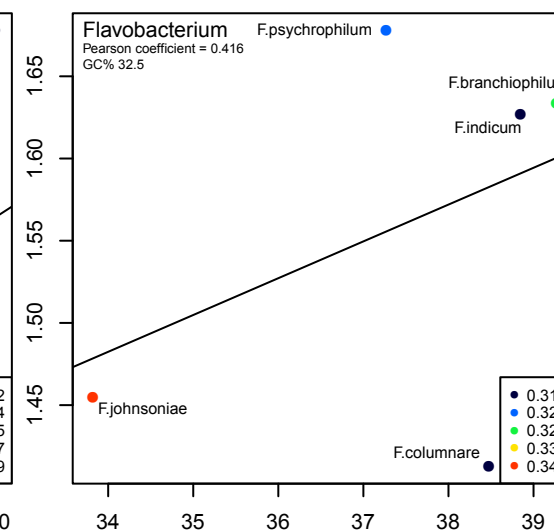
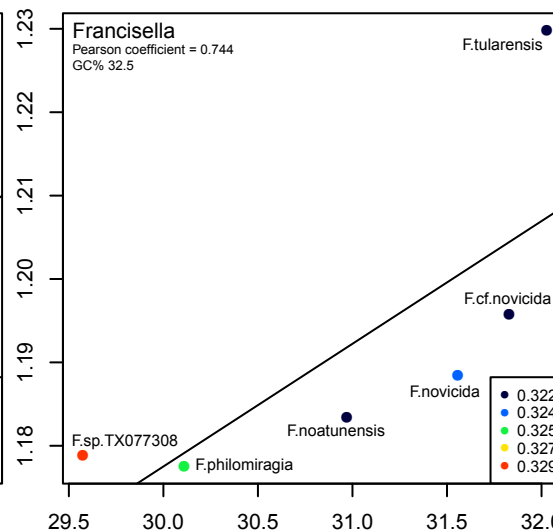
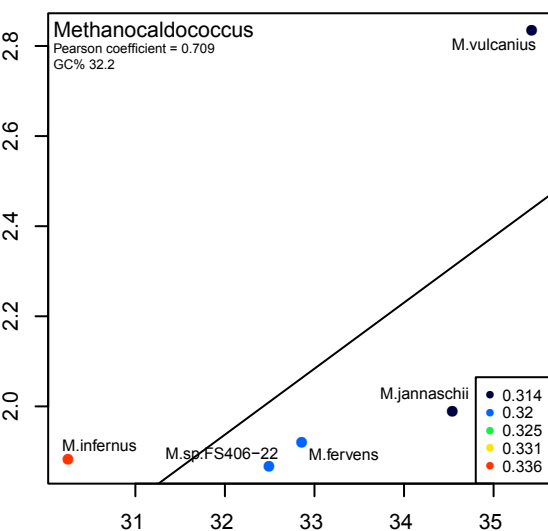
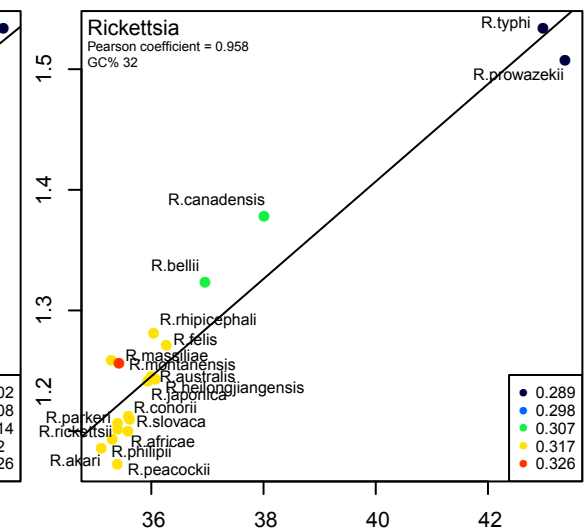
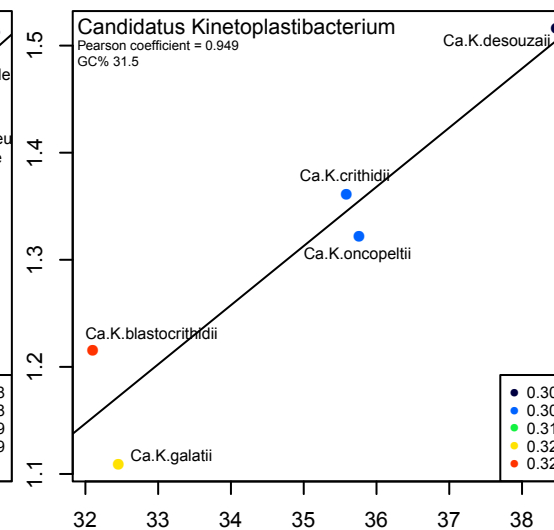
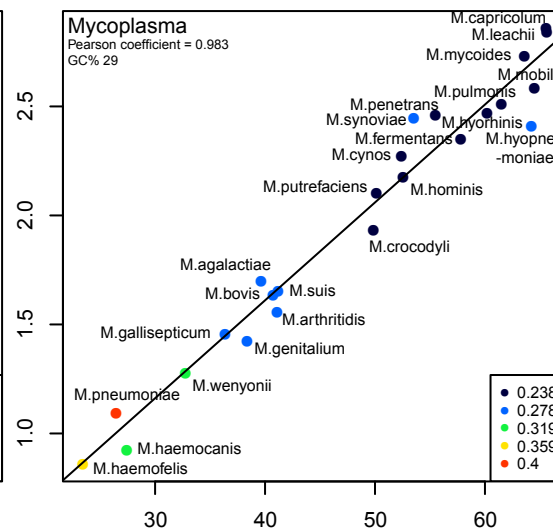
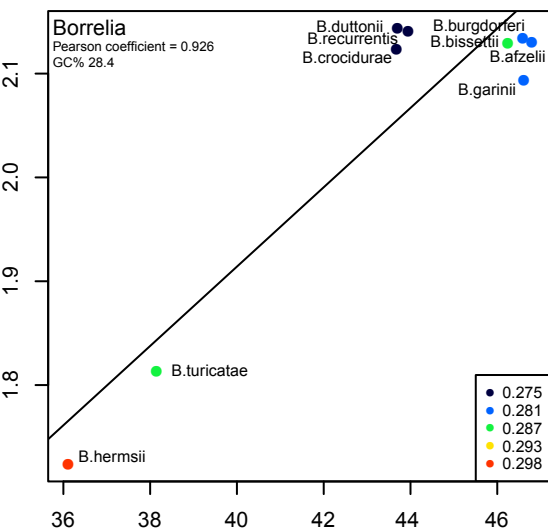
A. SCSs-TRs correlations and the GC contents in bacterial genera

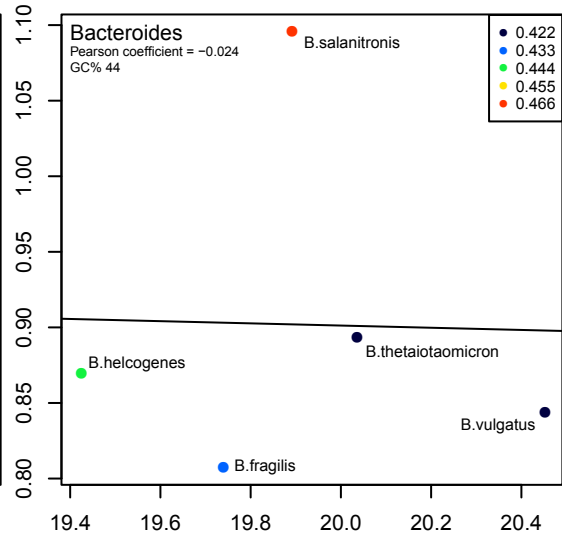
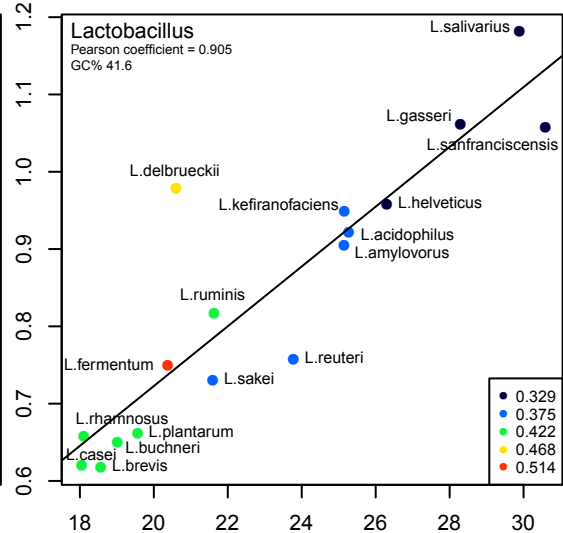
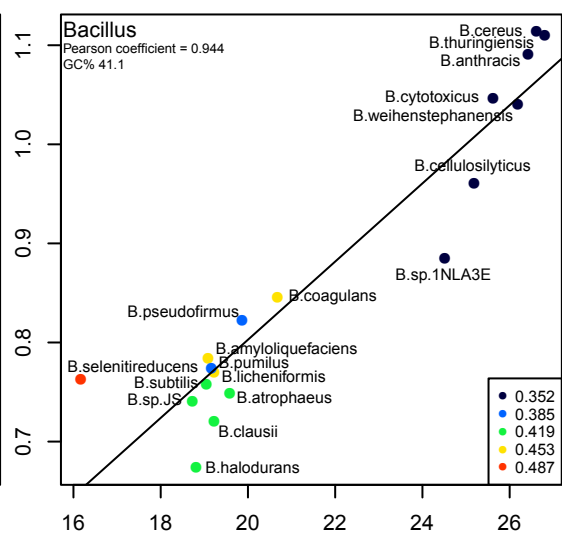
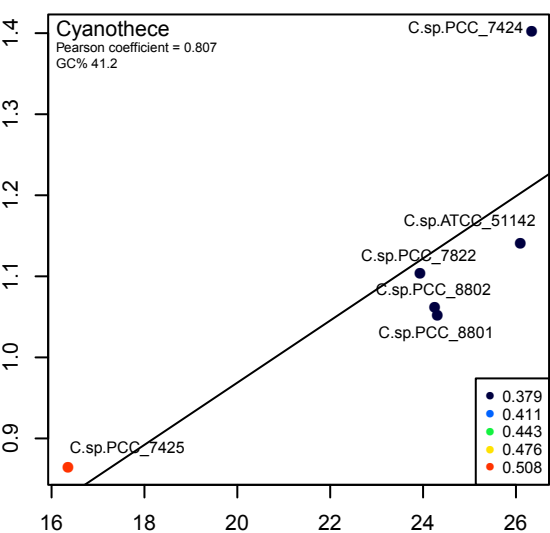
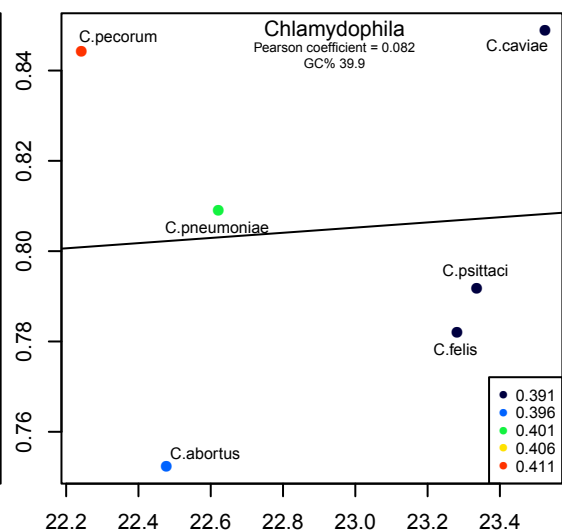
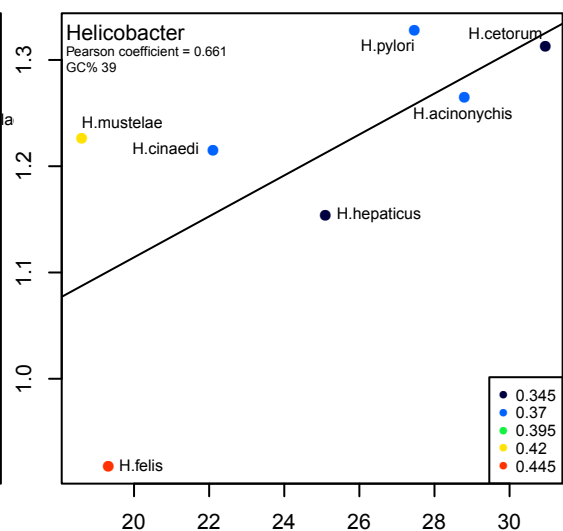
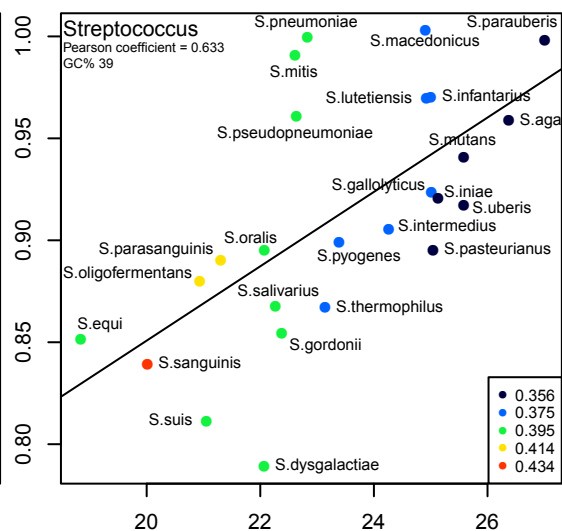
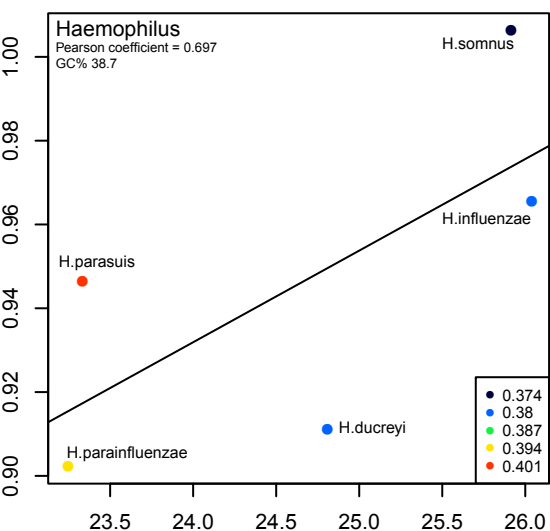
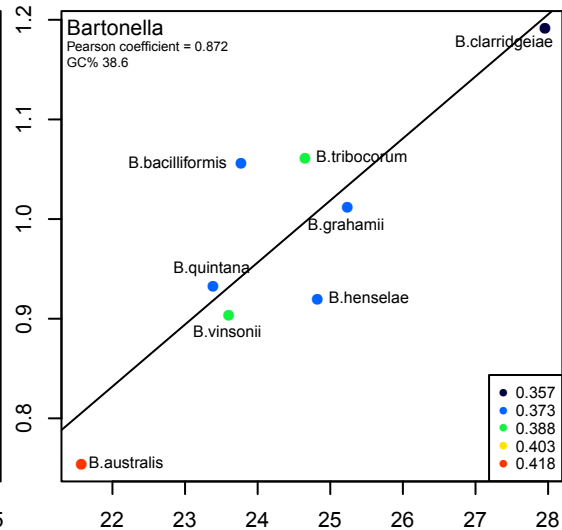
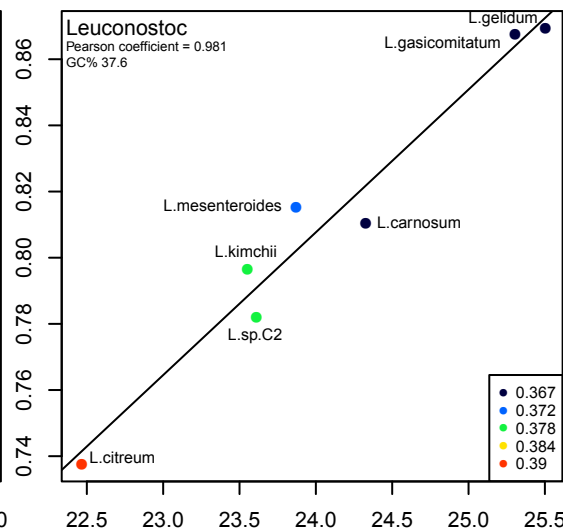
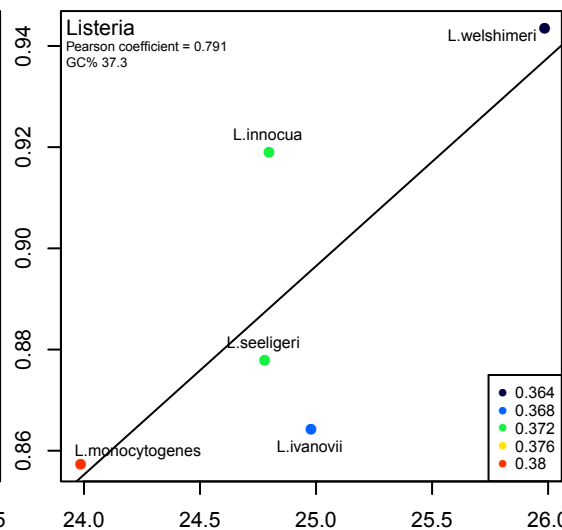
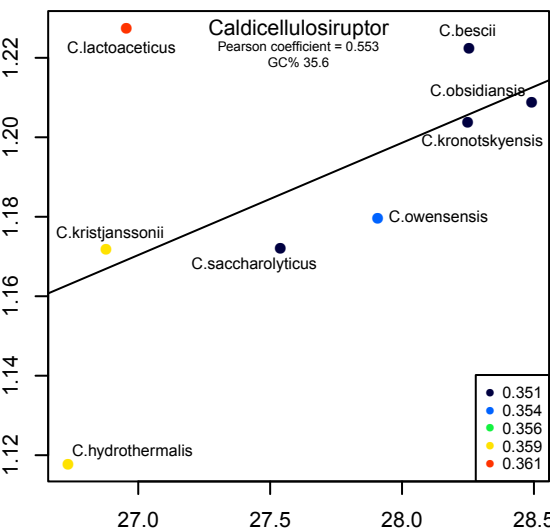


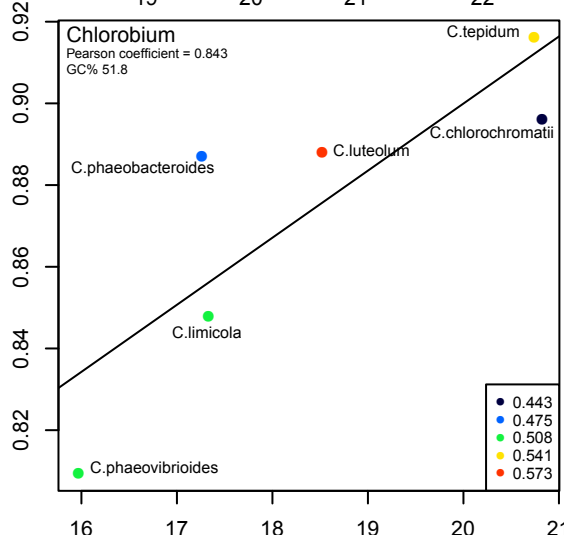
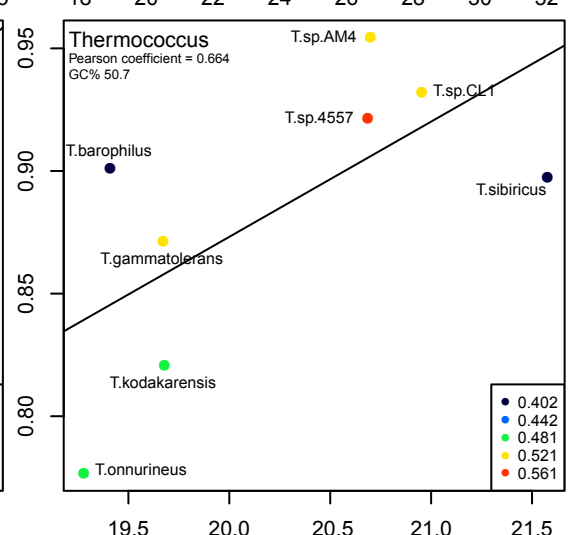
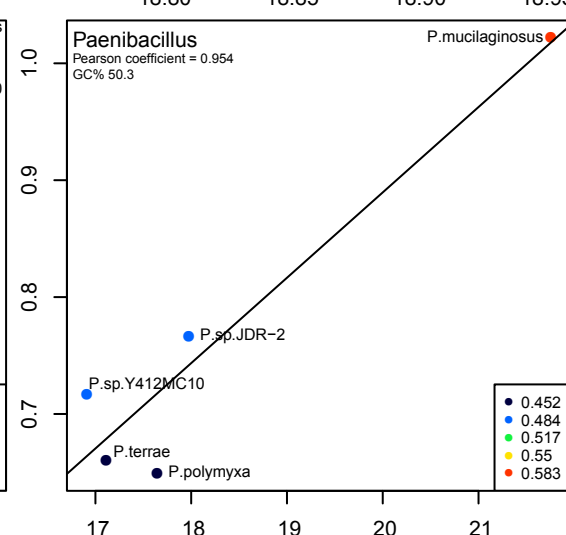
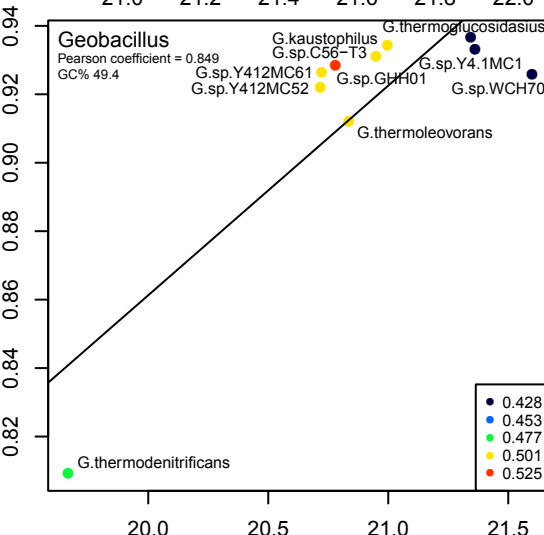
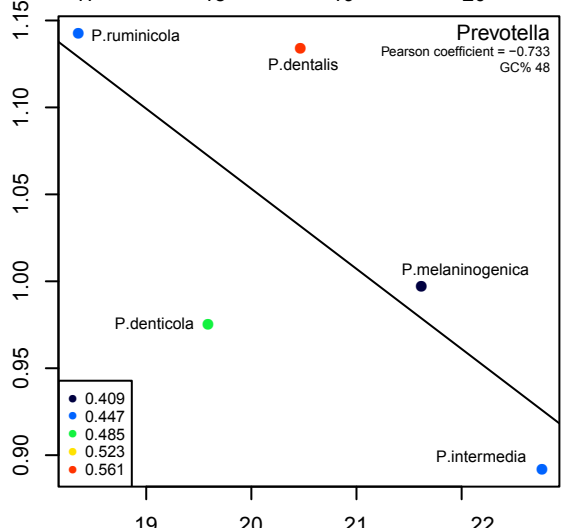
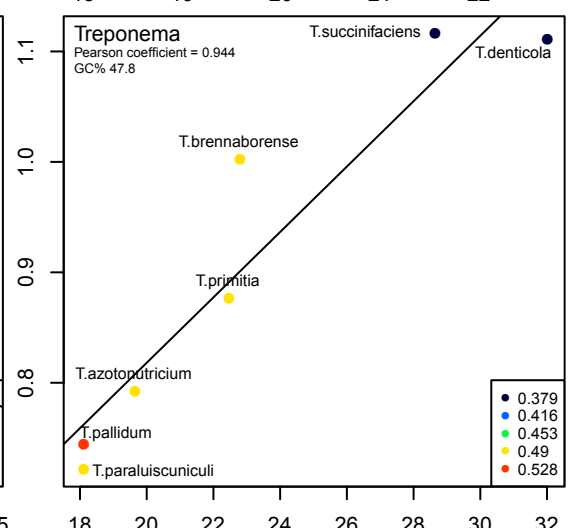
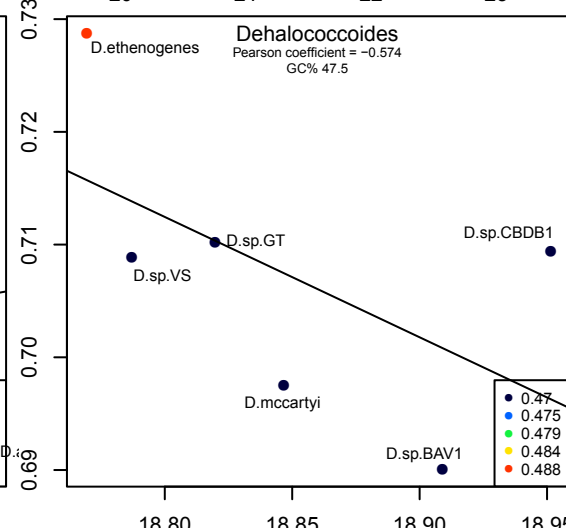
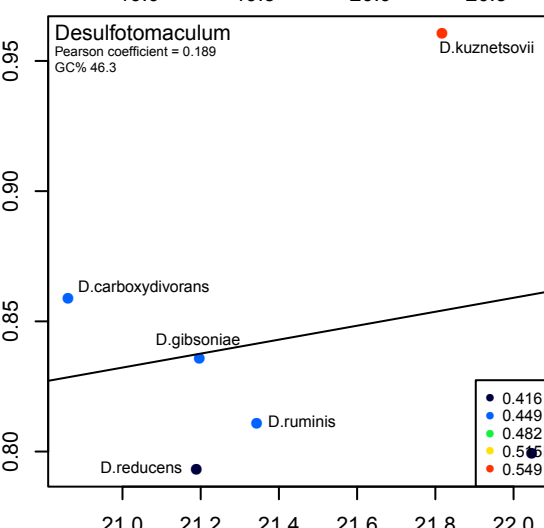
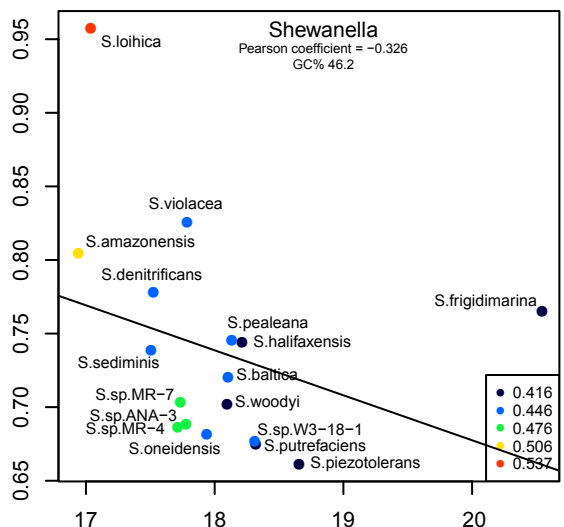
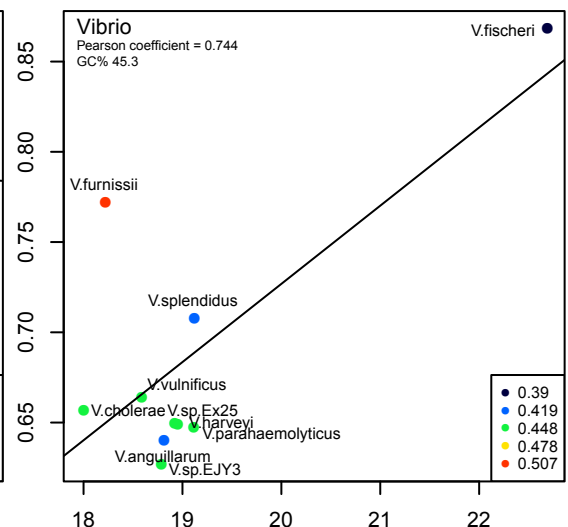
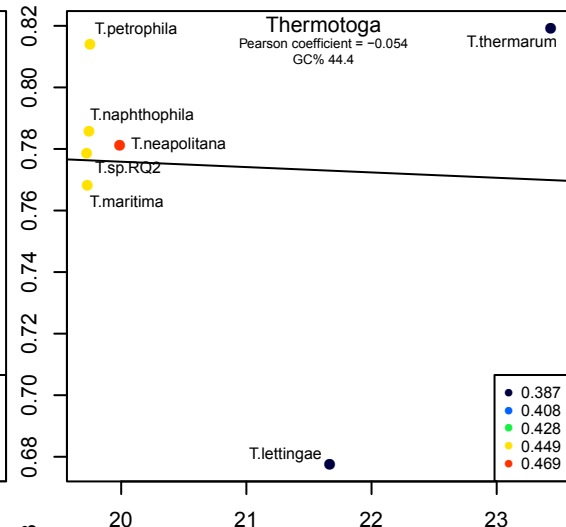
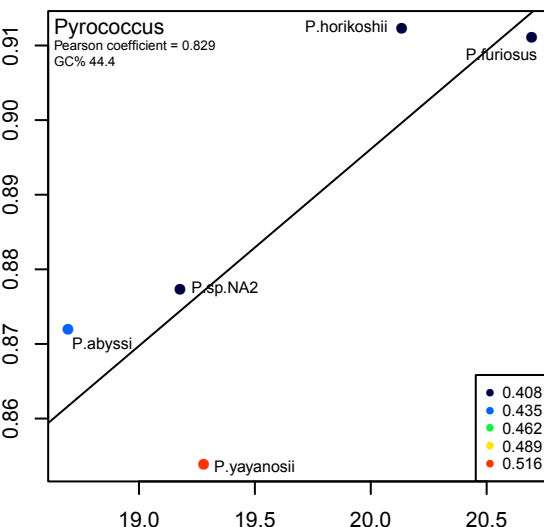
Bacterial genus

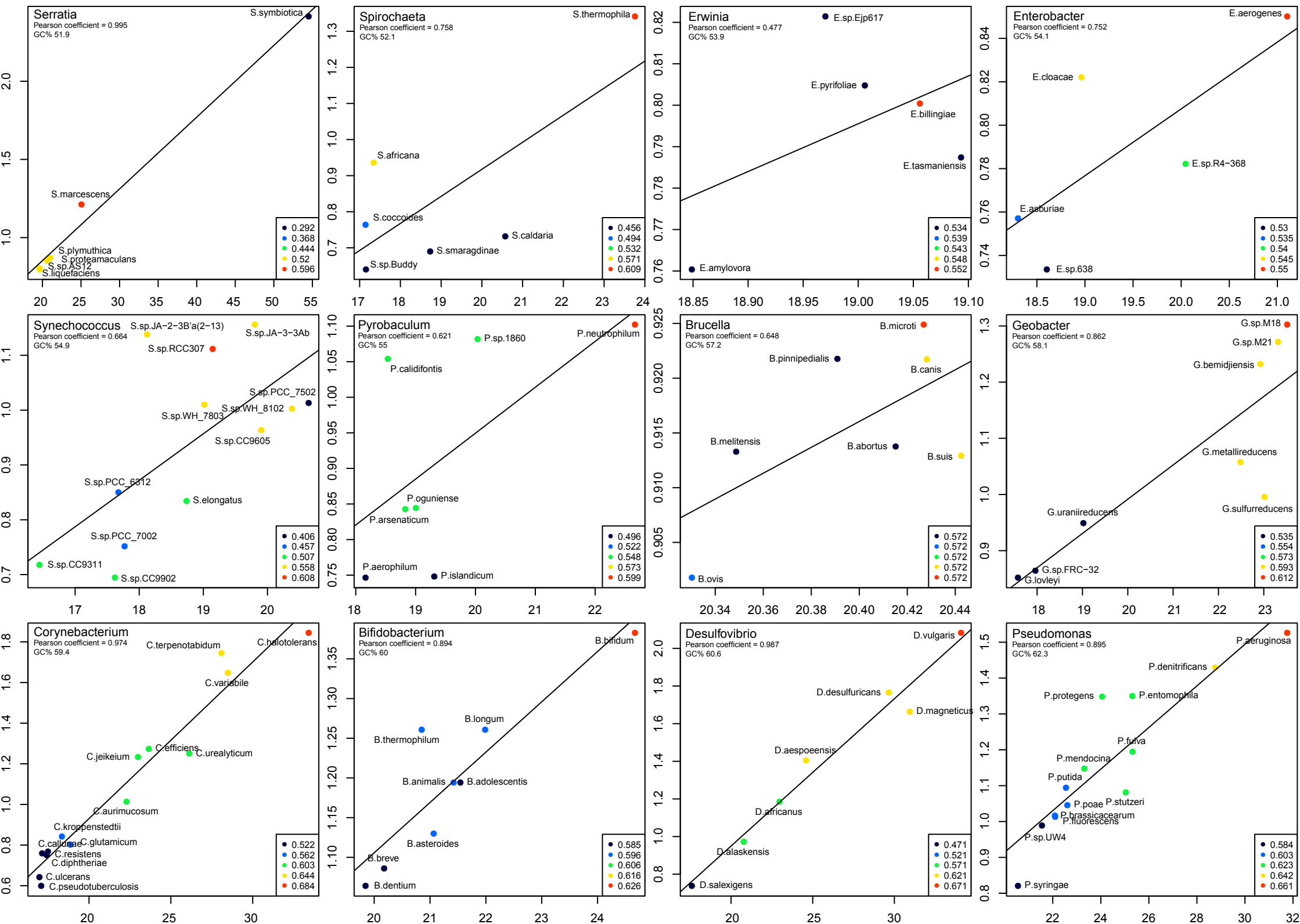
1	Bordetella	11	Corynebacterium	21	Borrelia
2	Propionibacterium	12	Acidovorax	22	Thermoanaerobacter
3	Burkholderia	13	Rickettsia	23	Lactobacillus
4	Serratia	14	Paenibacillus	24	Xanthomonas
5	Arthrobacter	15	Candidatus Kinetoplastibacteriu	25	Pseudomonas
6	Desulfovibrio	16	Treponema	26	Bifidobacterium
7	Mycoplasma	17	Bacillus	27	Bartonella
8	Methylobacterium	18	Clostridium	28	Geobacter
9	Leuconostoc	19	Staphylococcus	29	Geobacillus
10	Campylobacter	20	Deinococcus	30	Chlorobium
31	Pyrococcus	41	Methanocaldococcus	51	Erwinia
32	Wolbachia	42	Haemophilus	52	Flavobacterium
33	Mycobacterium	43	Thermococcus	53	Desulfotomaculum
34	Listeria	44	Synechococcus	54	Chlamydomphila
35	Cyanothece	45	Helicobacter	55	Bacteroides
36	Spirochaeta	46	Brucella	56	Thermotoga
37	Enterobacter	47	Streptococcus	57	Shewanella
38	Francisella	48	Pyrobaculum	58	Dehalococcoides
39	Vibrio	49	Caldicellulosiruptor	59	Prevotella
40	Streptomyces	50	Frankia		

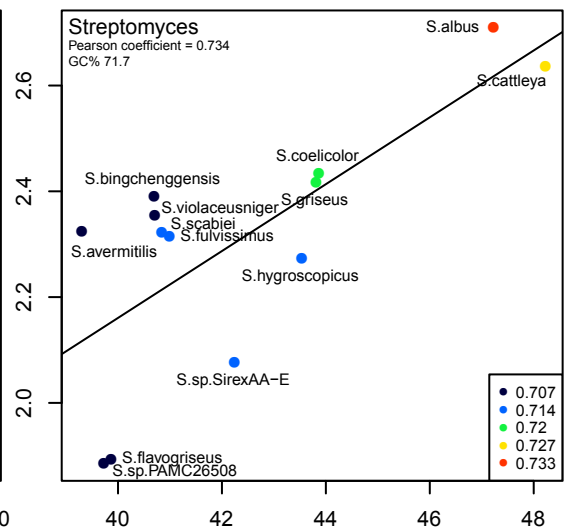
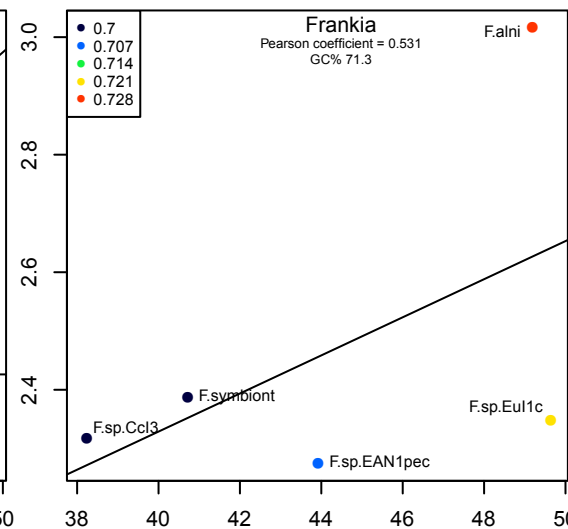
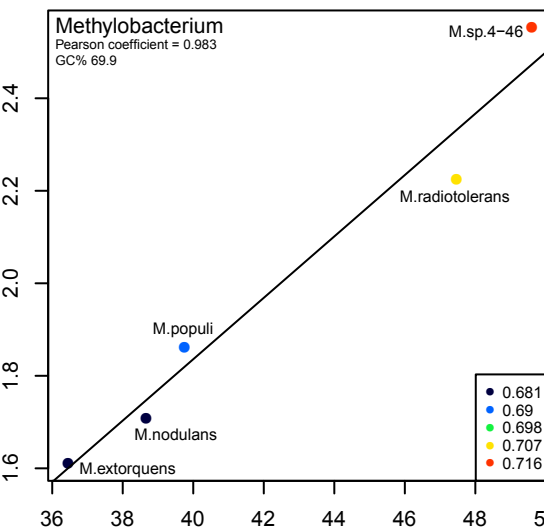
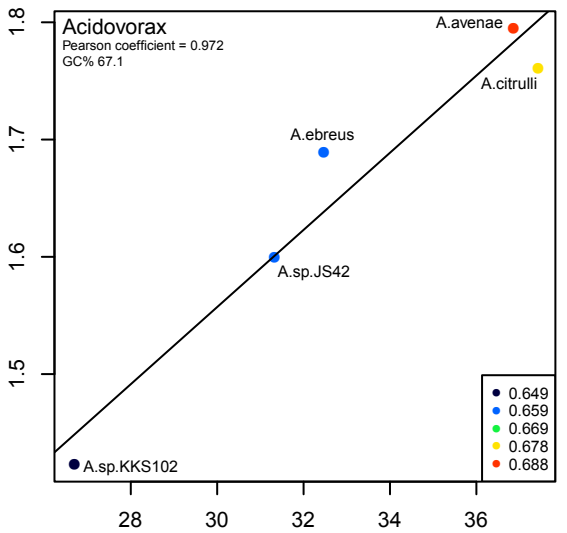
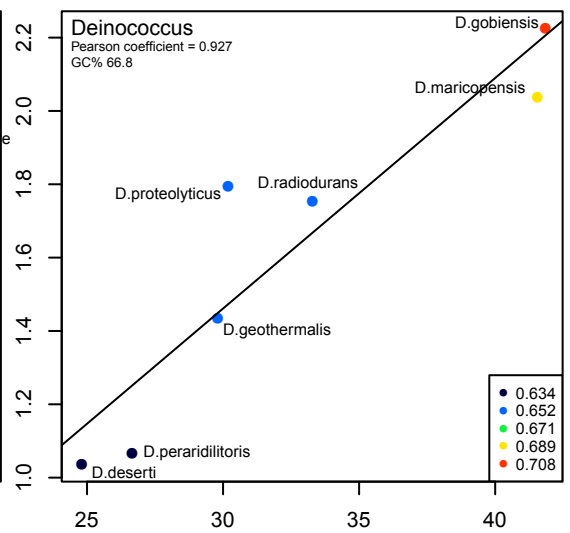
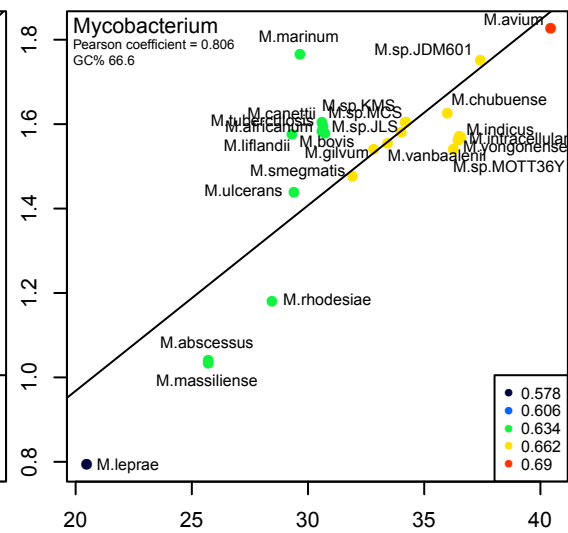
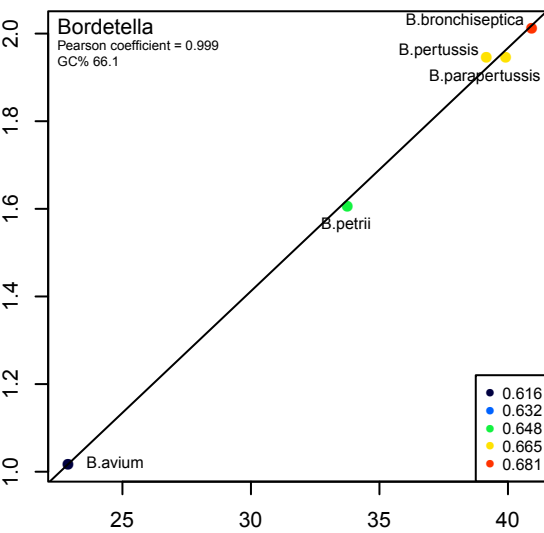
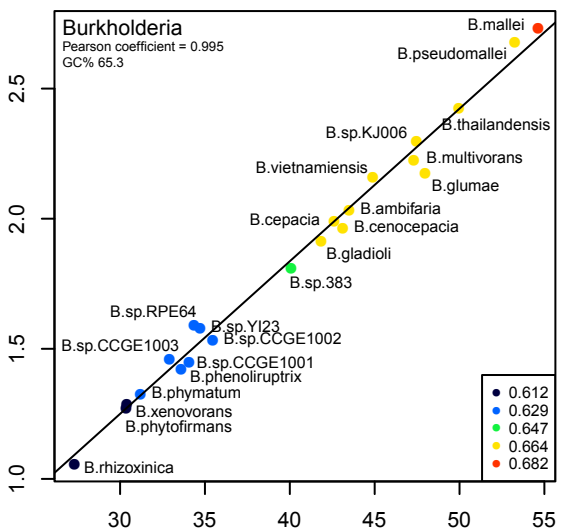
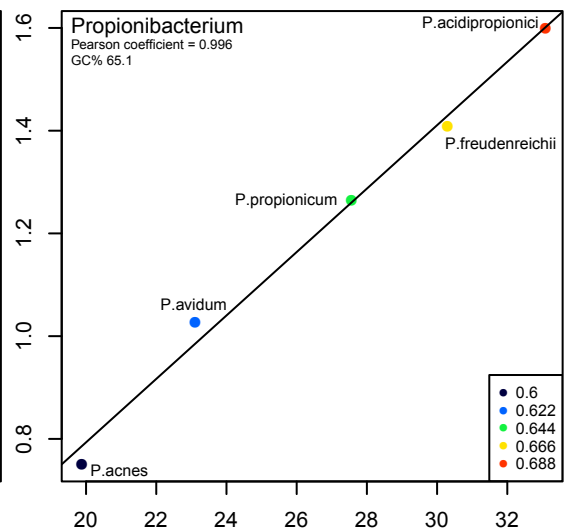
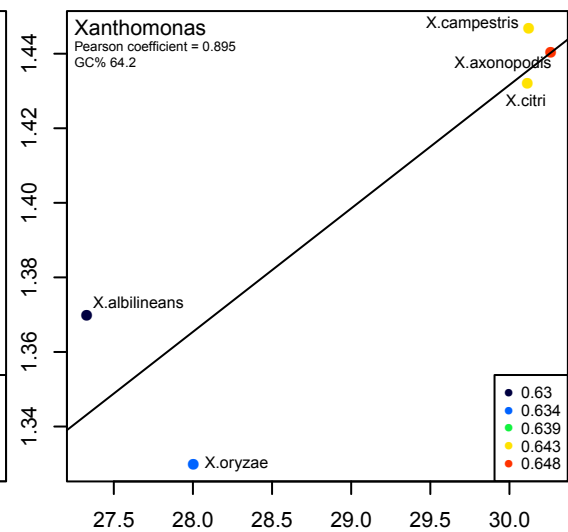
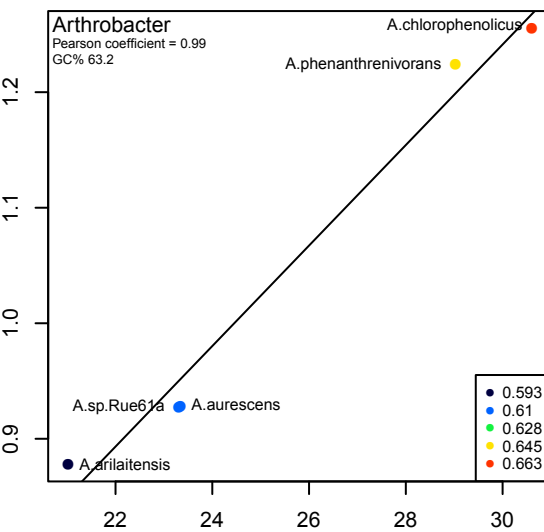
B. SCSs-TRs correlation in each bacterial genus











C. Direct repeats-TRs correlation in each bacterial genus



