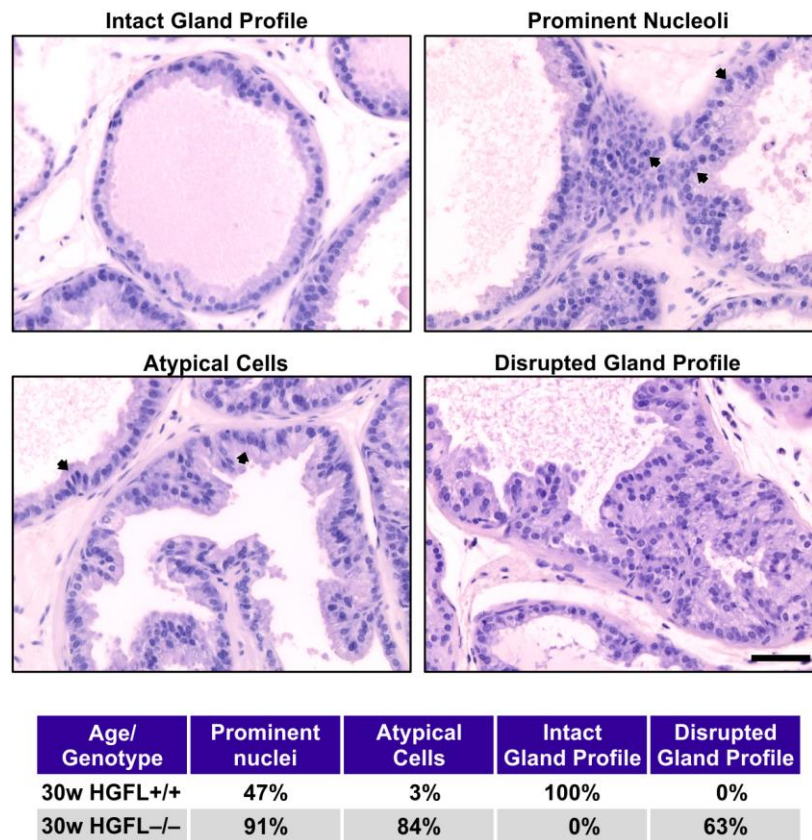


Hepatocyte growth factor-Like protein is required for prostate tumor growth in the TRAMP mouse model

Supplementary Material



Supplementary Figure S1. Histological characterization of prostates from HGFL+/+ and HGFL-/- mice. 30-week old prostates from HGFL+/+ and HGFL-/- mice were evaluated for histologic abnormalities. Ten different fields from three different specimens from HGFL+/+ mice prostates and five different specimens from HGFL-/- prostates were analyzed. Representative images for each histological classification are shown. Scale bar is 50µm. Detailed pathological features observed per genotype are tabulated below. Prostates from HGFL+/+ and HGFL-/- mice were histologically classified by examination for the presence of prominent nuclei, atypical cells and disrupted glandular profiles as previously described (19).