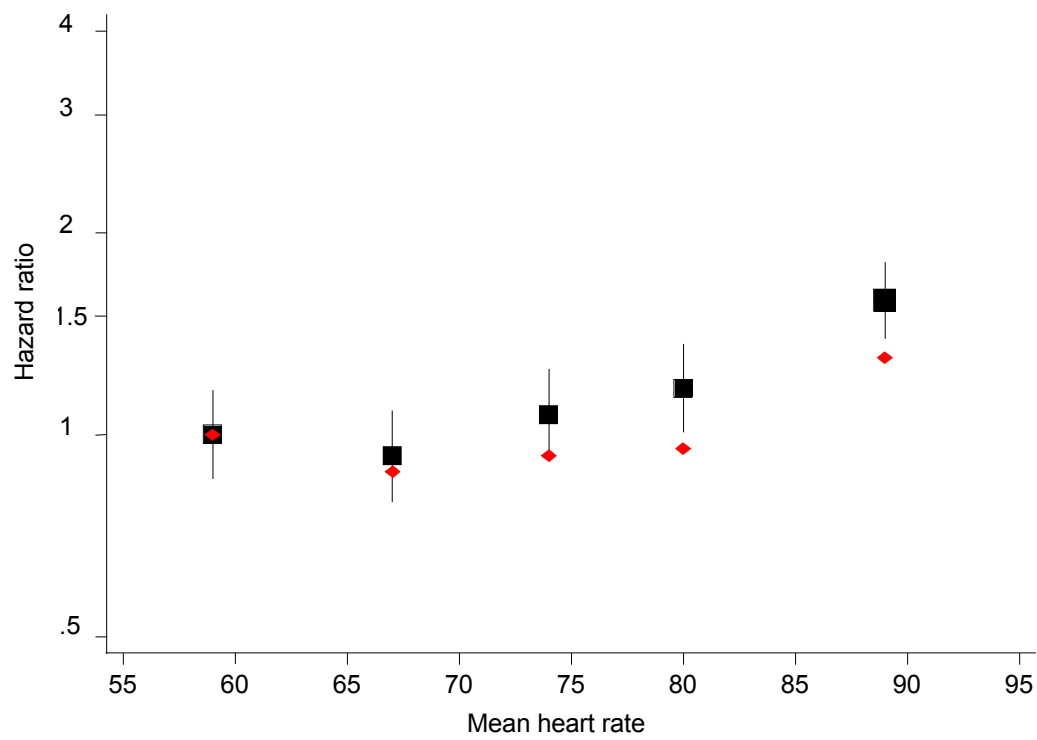
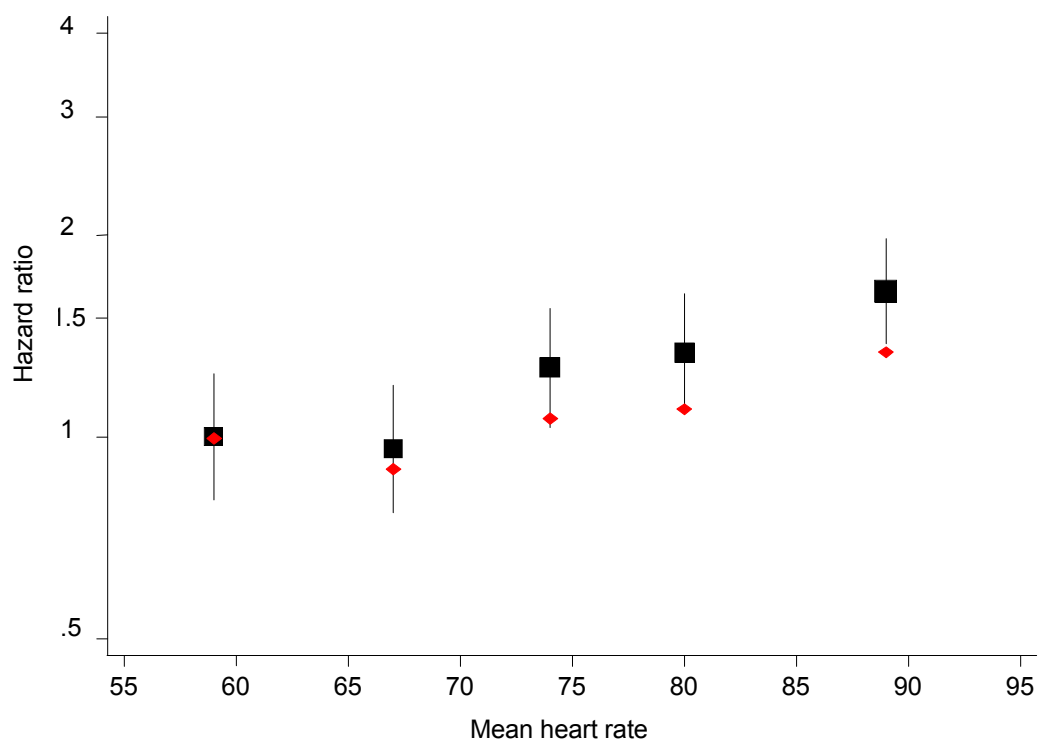


SUPPLEMENTARY FIGURES

Supplementary figure 1. Resting heart rate (by fifth) and the risk of death from any cause adjusted for age and sex ($p < 0.001$ for trend) with unadjusted hazard ratio, without confidence interval, shown as red diamond.



Supplementary figure 2. Resting heart rate (by fifth) and the risk of cardiovascular death adjusted for age and sex ($p < 0.001$ for trend) with unadjusted hazard ratio, without confidence interval, shown as red diamond.



Supplementary figure 3. Resting heart rate (by fifth) and the risk of major cardiovascular events ($p=0.003$ for trend) adjusted for age and sex with unadjusted hazard ratio, without confidence interval, shown as red diamond.

