



Supplemental Material to:

Marie Vincent, Géraldine Teppaz, Laurie Lajoie, Véronique Solé, Anne Bessard, Mike Maillason, Séverine Loisel, David Béchard, Béatrice Clémenceau, Gilles Thibault, Laure Garrigue-Antar, Yannick Jacques, and Agnès Quéméner

Highly potent anti-CD20-RLI immunocytokine targeting established human B lymphoma in SCID mouse

mAbs 2014; 6(4)

<http://dx.doi.org/10.4161/mabs.28699>

<https://www.landesbioscience.com/journals/mabs/article/28699/>

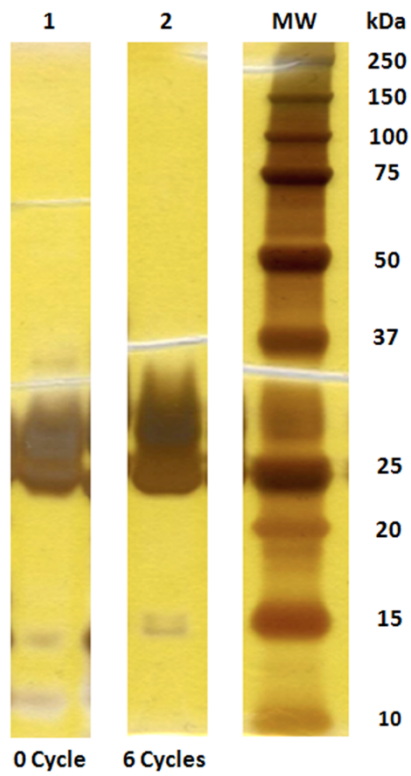


Figure S1: *Stability of RLI.* Silver stain SDS-PAGE under reducing conditions: lane 1: 1 μ g of freshly defrozed RLI, lane 2: 1 μ g of RLI after 6 freeze-thaw cycles. MW: Molecular Weight; kDa: kilo Dalton.

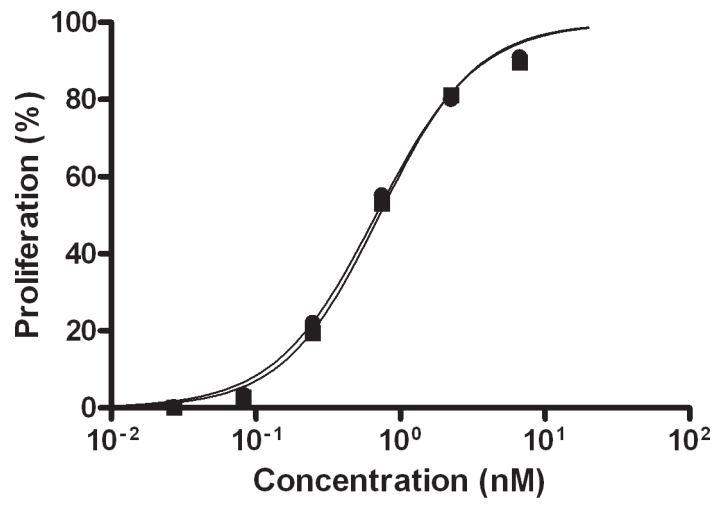


Figure S2: *Maintening of the activity of RLI.* 32Dβ cell proliferation induced by increasing concentrations of RLI freshly defrosted (●) or after 6 successive freeze-thaw cycles (■).