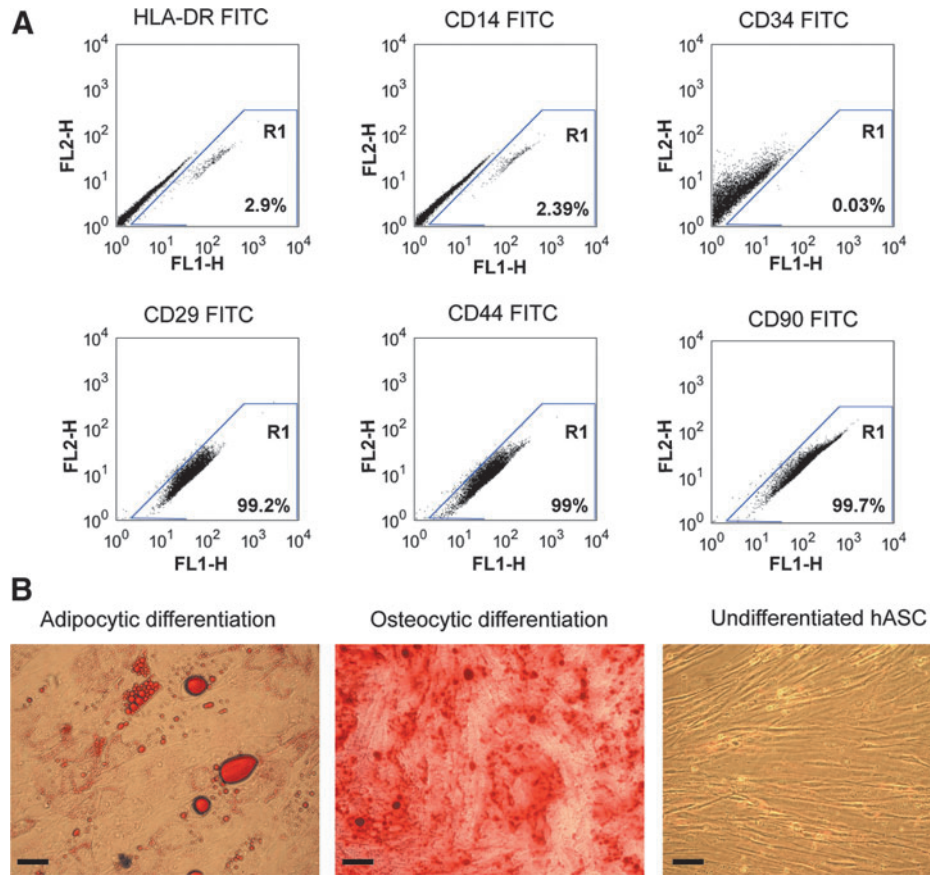


Supplementary Data



SUPPLEMENTARY FIG. S1. Phenotypic characterization of lipoaspirate-derived hASCs. **(A)** FL1-H vs. FL2-H dot-plot analysis of HLA-DR, CD14, CD34, CD29, CD44, and CD90 cell surface markers from the hASCs employed in this study. The respective isotype control samples were used to adjust the gates. A rightward shift into region R1 indicates a specific fluorescent signal relative to the background fluorescence. The percentage of positive cells for a given surface marker is indicated. **(B)** The hASC population (passage 3) was induced during 21 days toward adipocytic differentiation, visualized by Oil Red staining (*left panel*), or toward osteocytic differentiation, visualized by Alizarin Red staining (*middle panel*). Confluent, noninduced hASCs at the end of the differentiation period showed the typical fibroblast-like appearance of undifferentiated cells (*right panel*). Bars indicate 20 \times magnification.